

2020 - 2021

FIJI



WELCOME TO FIJI

Let **GO Holidays** show you everything Fiji has to offer. Famous for its sundrenched islands, palm fringed white sand beaches, turquoise blue waters, lush rainforests and rugged volcanic peaks, Fiji offers something for everyone. Stay in luxury resorts, indulge in spa treatments or discover a slice of traditional village life. Be assured you'll always receive a friendly 'bula' welcome!

GO Holidays are experts at creating holidays to suit a wide variety of tastes and budgets. Whatever your needs, you can trust our dedicated travel professionals to organise your dream holiday.



Experience a Fijian Meke where performers wear traditional costumes and story-tell through song and dance



Sun Coast



Shangri-La's Fijian Resort & Spa, Coral Coast

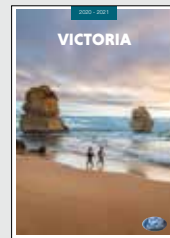
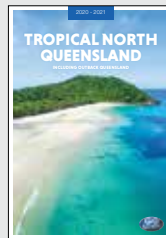
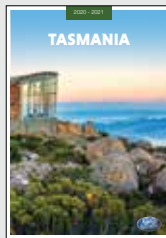
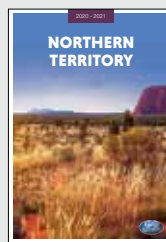
CONTENTS

| | |
|-------------------------------|-----------|
| Navigating This Brochure | 7 |
| Travel Tips | 9 |
| Experiences You'll Love | 10 |
| Holiday Packages | 12 |
| Transfers | 17 |
| Car Hire | 20 |
| Exploring Fiji | 21 |
| Island Hopping | 22 |
| Island Cruising | 24 |
| Tours | 26 |
| Nadi & Surrounds | 31 |
| Denarau Island | 36 |
| Coral Coast & Pacific Harbour | 42 |
| Mamanuca Islands | 52 |
| Yasawa Islands | 63 |
| Regional Fiji Islands | 66 |
| Suva & Sun Coast | 71 |
| Accommodation Index | 74 |
| Booking Conditions | 75 |

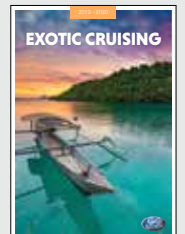
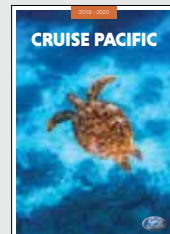
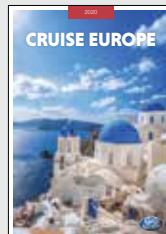
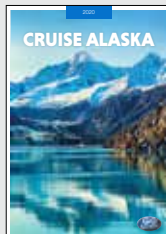


LET GO HOLIDAYS HELP YOU CHOOSE YOUR PERFECT HOLIDAY

AUSTRALIA



CRUISE COLLECTION



Sink into a beachside hammock and be lulled by the gentle sound of lapping waves and cool ocean breezes in the Fijian Islands

WHY CHOOSE GO HOLIDAYS



1. GO Holidays has over 40 years' experience designing travel for New Zealand travellers
2. Our comprehensive range of innovative travel experiences are based on our own experiences
3. We work with a wide range of preferred travel agent partners across New Zealand
4. GO Holidays offers fantastic prices, a diverse range of holiday destinations, wide product choice and unmatched service
5. All our products have been tried and tested by us or our trusted overseas partners for your peace of mind

GO ASSIST HELP DESK

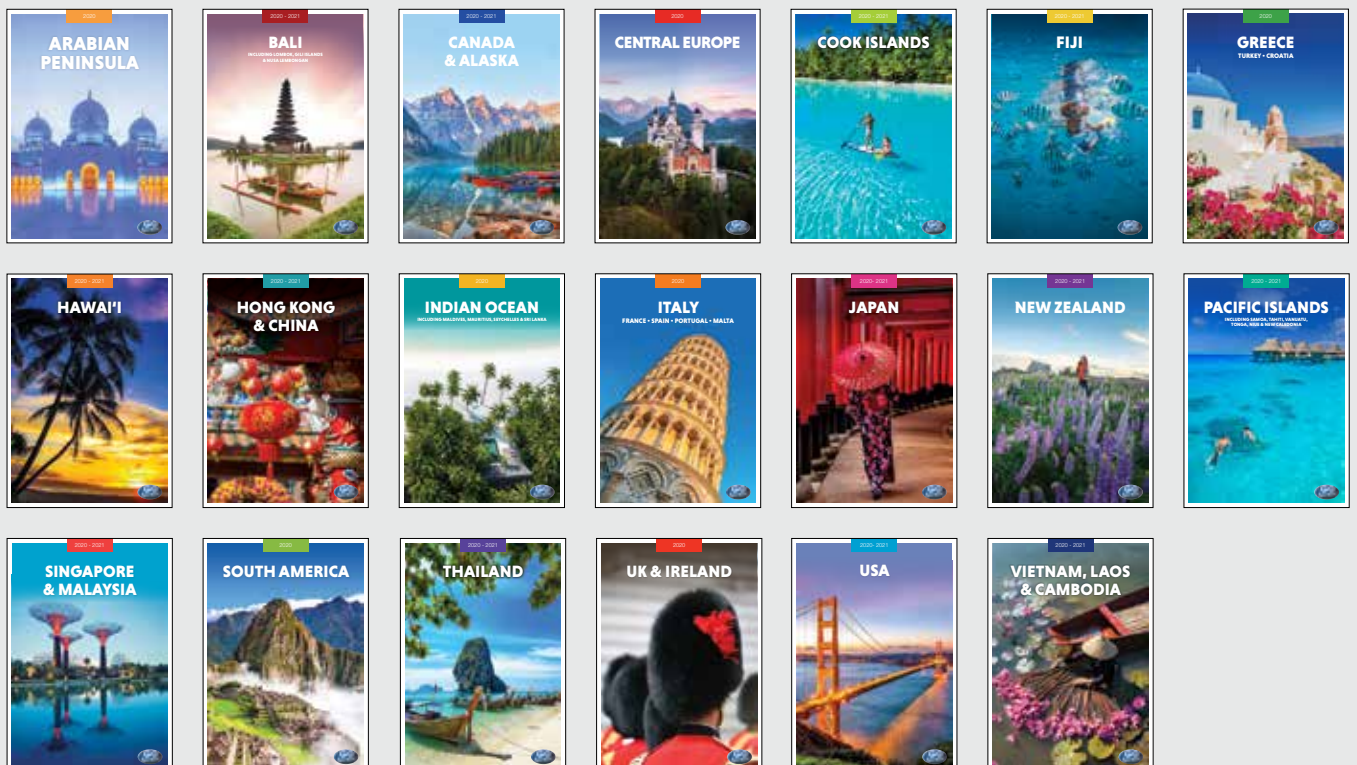
We know your holiday experience doesn't end until you are safely home. That's why our GO Assist Help Desk is available 24 hours a day, seven days a week, should you require assistance during your holiday.

TAILOR MADE HOLIDAYS

Whether it's driving along the Amalfi coastline, seeing the majestic Northern Lights or exploring Australia's Red Centre, our team of travel experts can design a custom made itinerary just for you!

With our Tailor Made holidays anything is possible, let us create your dream holiday today.

INTERNATIONAL & NEW ZEALAND





• No trip to Fiji is complete without sampling the national drink, Kava – shared as a symbol of acceptance and friendship



• The Fijian Islands are one big playground, where days are filled with sunshine and adventure making it the ultimate family destination

NAVIGATING THIS BROCHURE

The following symbols should be used as a guide to assist in choosing the accommodation or touring option that best suits your needs.

Our Destination Specialists have negotiated a range of special offers including free meals, free nights, early bird booking discounts and more. Look for the following symbols on individual property listings and ask your travel agent for full details of the offer available.



Early Bird Offer

A discount off the regular room price is available at certain times of the year for advance bookings.



Kids Dining Offer

A dining offer for children is available, e.g. discounted or free meals. Child ages, meal types and conditions vary.



Free Night Offer

Receive one or more free nights for stays at certain times of the year.



Honeymoon Offer

A special bonus offer is available if you are celebrating your honeymoon. This may include sparkling wine, flowers, chocolate or fruit platters, welcome drinks, romantic dinners, spa treatments, late check-out or room upgrades. A minimum stay may be required and conditions vary. Advise your travel agent at the time of booking.



Bonus Offer

A bonus offer is available at certain times of the year, e.g. free breakfast, food and beverage credit, spa treatment, late check-out, room upgrade and more.

SYMBOL GUIDE



Look for this symbol to see some of our best selling products and experiences. Our customers love them and so will you!



Properties offering free Wi-Fi access in common areas and rooms.



Properties offering in-room disabled facilities.



Properties offering family friendly facilities, which may include a kids club, kids eat free offer, family or interconnecting rooms and discounts off a second room.



Properties featuring an all inclusive price with breakfast, lunch and dinner included. Some properties may also include beverages, day excursions and activities. Conditions may apply. Ask your travel agent at the time of booking for further details.



Properties featuring the Luxury Collection symbol, in our view, provide an exceptional standard of accommodation, facilities and service.



Open Dated – buy now book later tour options give the flexibility to pay for ‘must do’ tours before you travel and book when you arrive. Just pick the day that suits you and call us up to 24 hours in advance to book.

OUR RATINGS

The accommodation ratings featured in this brochure will provide a general indication of the standard of accommodation and may alter throughout the year due to a change of circumstance. These are our views and are not related to any other rating system. We recommend checking with your travel agent to find the accommodation that best suits your needs and budget.



Budget



Comfortable



Superior



Deluxe



Half rating



TRAVEL TIPS

WHEN TO GO

Fiji enjoys a tropical island climate all year round. During Fiji's winter months, from May to October, the humidity drops and it's the perfect time for swimming or lazing on white sandy beaches, exploring beneath the waves and discovering the jungle clad inland. Divers and snorkellers will experience increased visibility around the coral reefs.

From November to April, known as the green season, the temperature and humidity starts to climb. This time of the year is often characterised by afternoon showers that bring a welcome respite from the heat. Overall for those wanting a lazy beachside holiday, there is no bad time to visit Fiji.

VISAS & PASSPORTS

A valid passport is required with at least six months validity beyond the intended stay. A visa is not required for New Zealand passport holders. Travel advice is available from the New Zealand Government Ministry of Foreign Affairs and Trade at www.safetravel.govt.nz.

TIME

Fiji is on the same time as New Zealand Standard Time (NZST). Daylight Saving Time is observed from November to January when their clocks are turned forward by 1 hour.

CURRENCY

Fijian Dollar (FJD). ATMs are located in major urban areas. All major credit cards are widely accepted.

TIPPING & BARGAINING

Tipping is not encouraged in Fiji. Bargaining is generally not encouraged, however may be acceptable with some Indo-Fijian merchants.

TEMPERATURE & RAINFALL

| Nadi | J | F | M | A | M | J | J | A | S | O | N | D |
|-----------------------|-----|-----|-----|-----|----|----|----|----|----|-----|-----|-----|
| Temperature (max °C) | 30 | 30 | 32 | 33 | 32 | 31 | 30 | 30 | 30 | 31 | 31 | 31 |
| Average rainfall (mm) | 299 | 302 | 324 | 163 | 78 | 62 | 46 | 58 | 77 | 103 | 138 | 159 |

LANGUAGE

English is the official language. Several Fijian dialects and Fijian Hindi are also widely spoken.

ETIQUETTE

Dress modestly when outside your hotel or resort and remove hats and sunglasses when visiting villages. Ladies should cover the knees and shoulders when visiting temples and villages.

ELECTRICITY

240V 50Hz. An adapter is required.

GETTING AROUND

Take the time to explore and discover as you make your way around Fiji. The standard left hand rule applies to driving in Fiji. The maximum speed limit in villages and towns is 50km/h, with 80km/h in less populated areas.

A current drivers licence from an English speaking country is required while drivers from other countries need an international driving permit.

Fiji is the perfect destination for a driving holiday. While driving distances are short, it is important to note that the winding roads can mean travel times are longer than anticipated.

| | | |
|-------------------------|--------|---------------|
| Nadi to Coral Coast | 85 km | 1 hr 30 mins |
| Nadi to Pacific Harbour | 144 km | 2 hrs 30 mins |
| Nadi to Suva | 190 km | 3 hrs 20 mins |
| Nadi to Rakiraki | 132 km | 2 hrs 25 mins |



PACIFIC OCEAN



Mamanuca Islands

EXPERIENCES YOU'LL LOVE

The best part of any journey is the experiences you have along the way, leaving you with memories to relive long after the holiday is over.

Fiji has countless amazing things to see and do. Here are five of our favourites to inspire your wanderlust.



Malamala Beach Club

ISLAND BEACH CLUB

Welcome to Malamala Beach Club, the world's first beach club located on its own private island. Grab a day pass and experience the crystal clear waters and white sand beaches, reserve a beachside cabana or relax by the infinity pool while taking in the views across the Mamanucas. Laze beneath a swaying palm tree or explore the cool waters with a kayak or paddle board. A delicious menu offers tasty treats and hand crafted cocktails. It is the ultimate way to switch off and unwind.



Bligh Waters, Sun Coast

SNORKELLING AND DIVING

Fiji is known as the soft coral capital of the world and its warm, clear waters offer some of the best year round diving and snorkelling. Vibrant coral reefs surround Fiji's 333 islands and atolls. The Mamanuca and Yasawa Islands are great spots for viewing colourful coral and fish, while the diving off Rakiraki is one of Fiji's best kept secrets. The Great Astrolabe Reef, one of the longest reefs in the world, circles the island of Kadavu. Its passages and drop-offs are a haven for divers.



Firewalking, Pacific Harbour

FIJIAN CULTURE

A village visit is a highlight of any Fijian holiday and provides a great insight into the traditional way of life. Be greeted by smiling children calling out 'bula', take part in a kava ceremony, sample authentic Fijian cuisine at a Lovo feast and marvel at the ancient ritual of firewalking. Watch a meke, from a graceful fan dance to a blood-curdling spear dance, it is a symbolic story told through song and dance. You can experience the culture at one of the many resort cultural nights or reserve a seat at Fiji Untold for the ultimate arts and culture experience.



Women's Meke



The clear tropical waters, brilliant coral reefs and the amazing variety of marine life make the Fiji Islands a perfect spot for snorkelling

ADVENTURE ACTIVITIES

In Fiji, many adventure experiences can be checked off even the most impressive bucket list. Pacific Harbour is Fiji's adventure capital and adrenaline junkies will love what's on offer, from thrilling jet boat rides and white water rafting to zip lining through lush rainforests and quad biking. For something a little more laidback try your luck on a fishing charter. In the Yasawa Islands, dive with sharks or swim with the Manta ray. Experienced board riders won't want to pass up the chance to surf at the iconic Cloudbreak.



Zip Lining, Pacific Harbour

SMALL SHIP CRUISING

Go on a journey through paradise and discover the real Fiji. With over 300 tropical islands, a cruise is one of the best ways to explore the crystal waters, tropical atolls and striking volcanic outcrops. Cruising through Fiji is an experience of a lifetime, sail to uninhabited islands, anchor in private lagoons or spend countless hours lazing on golden beaches. Blue Lagoon and Captain Cook Cruises have small cruise ships that can negotiate reefs and remote islands with ease. Snorkel from the ship or go ashore and visit one of the local villages dotted throughout the islands.



Captain Cook Cruises



Blue Lagoon Cruises



Mana Island, Mamanuca Islands

HOLIDAY PACKAGES

Our inclusive range of holiday packages have been specially designed with you in mind and are a perfect introduction to Fiji. Known for its pristine sandy beaches, crystal clear water, indulgent spas, and friendly hospitality, Fiji is a favourite holiday destination for couples, honeymooners, families and groups of friends alike. Be inspired by one of our fantastic holiday packages and discover all that Fiji has to offer.

FAMILY HOLIDAYS



For an unforgettable holiday filled with sunshine, wonder and adventure, Fiji is the ultimate destination for families. With incredible wildlife, stunning beaches and a huge range of adventure activities, Fiji is really one big playground you and your kids will adore.

Discover Fiji's unique marine life on a guided snorkelling or scuba diving adventure and see vibrant corals, turtles and colourful reef fish. Jet skiing, stand up paddle boarding and kayaking are the perfect way to explore on the water. Fiji's long sandy white beaches are great for kids to run, swim and build sand castles to their hearts' content. Many resorts offer kids clubs along with family friendly activities while adults can relax by the pool. There's so much for families to see and do in Fiji.

REJUVENATION ESCAPES



You will feel yourself unwinding a little more each day in Fiji. Slow your pace to 'island time' and enjoy simply being in the moment. Soak up the sunshine and float for a while in the calm warm ocean waters and listen to the gentle sound of waves lapping the shore. Sink into a beachside hammock and sip on a refreshing green coconut juice or kick back on a sun lounge looking out to the ocean.

Relax, unwind and re-energise in tranquil surrounds. Enjoy a soothing massage by the beach or indulge in a therapeutic spa treatment tailor-made with your needs in mind. Start your day with an invigorating yoga or meditation session and feel all traces of stress leave your body. Unplug from the world and reconnect with yourself in Fiji.

ROMANTIC GETAWAYS



The perfect place to enjoy a little romance, Fiji is the ideal place for proposals, honeymoons and anniversaries – or just because you're feeling the love! Escape with your sweetheart and spend your days lazing on secluded beaches, swimming in the azure ocean, exploring lush rainforests or enjoying a spa treatment or massage for two.

Take a romantic stroll along the beach as you watch a glorious sunset. Escape to a private island with a Champagne beach picnic for two or indulge in an intimate candlelit dinner to share with that special someone. With child-free couples only resorts to be taken advantage of, your romantic getaway in Fiji can be completely private and self-indulgent. Relax, unwind and enjoy each other's company in a gorgeous romantic setting – Fiji sets the scene for a truly romantic holiday.





FAMILY FUN PLANTATION ISLAND RESORT 5 NIGHTS



Plantation Island Resort is a haven for families, with a full range of day and night time activities that are sure to entertain kids of all ages. Kids can participate in an endless list of adventures including scavenger hunts, cultural dancing and craft. There's no shortage of family fun activities, with three swimming pools, complete with a waterslide, children's playground, tennis court, mini putt putt and a beach volleyball court. Plantation Island Resort promises a cool, coastal escape for families of all ages.

INCLUDES

- 5 nights 3 star accommodation in a Poolside Room • Welcome shell lei and drink
- Free meals for up to 2 children 0 to 12 years when dining with paying adults in selected restaurants
- Free kids club for children 4 to 16 years
- Free kids water park for children 5 to 16 years
- Free use of non-motorised watersports
- Return coach and launch transfers from Nadi Airport

Refer to page 54 for more details on this property.

From **\$1815^{*^}** per family (PTF)

[^]Price based on 5 nights at Plantation Island Resort in a Poolside Room, valid 1 Apr – 14 Jun, 12 Oct – 24 Dec 20, 10 Jan – 31 Mar 21. Family prices are based on children 0 to 11 yrs when using existing bedding.



FAMILY BREAK SHANGRI-LA'S FIJIAN RESORT & SPA 5 NIGHTS



The Shangri-La's Fijian Resort offers a fun filled holiday for both adults and children. Kids can enjoy the Little Chief's Club and be entertained with a variety of fun activities while parents relax. Many of the activities also take place at the children's pool, on the beach or at the lively children's playground. The children's pool is located in the main pool area. For the curious minded, the resort also offers the Shangri-La Marine Education Centre, where everyone can learn about the marine environment that surrounds the Fijian islands. Adults can chill out and pamper themselves at the day spa or by watching a stunning sunset from the hotel's golden stretch of beach.

INCLUDES

- 5 nights 4½ star accommodation in a Yanuca Lagoon Deluxe Room • Breakfast daily
- Free meals for up to 2 children 0 to 11 years when dining with paying adults in the resort restaurants • Free kids club for children 4 to 12 years
- Use of selected non-motorised water activities
- Return coach transfers from Nadi Airport

Refer to page 47 for more details on this property.

From **\$2135^{*^}** per family (FIJ)

[^]Price based on 5 nights at Shangri-La's Fijian Resort & Spa in a Yanuca Lagoon Deluxe Room, valid 27 Apr – 26 Jun, 12 Oct – 20 Dec 20, 5 Jan – 31 Mar 21. Family prices are based on children 0 to 11 yrs when using existing bedding.



FAMILY TIME TREASURE ISLAND RESORT 5 NIGHTS



Treasure Island Resort is a secluded and peaceful resort located within the stunning Mamanuca Islands. A popular holiday venue, the island is a golden hub when it comes to activities for both adults and kids. For your energetic 'little treasures', endless fun awaits at the Little Treasures Kids Club, where an innovative programme of activities is run by a fun loving team of dedicated local staff. Activities include basket weaving, cultural games, lovo preparations as well as an array of activities revolving around the environment and the island's abundance of wildlife.

INCLUDES

- 5 nights 4 star accommodation in an Ocean View Bure
- Welcome drink and cool towel • Invitation to Manager's weekly cocktail party
- Free meals for up to 2 children 4 to 11 years when dining with paying adults in the resort restaurants • Free kids club for children 4 to 11 years
- Use of snorkelling equipment, kayaks and stand-up paddle boards
- Turtle and fish feeding • Return coach and launch transfers from Nadi Airport

Refer to page 59 for more details on this property.

From **\$3265^{*^}** per family (ZTI)

[^]Price based on 5 nights at Treasure Island Resort in an Ocean View Bure, valid 1 Apr – 28 Jun, 22 Jul – 20 Sep, 14 Oct – 21 Nov, 14 – 23 Dec 20, 8 Jan – 31 Mar 21. Family prices are based on children 0 to 11 yrs when using existing bedding.

HOLIDAY PACKAGES



FAMILY EXPERIENCE CASTAWAY ISLAND RESORT 5 NIGHTS



Holidaying with the kids has never been easier than at Castaway Island. The Fijians' love of children is legendary and children will be well cared for by the Castaway family. The Castaway Kids Club is renowned as the place to be for fun. Supervised daily adventures and educational games with a distinctive Fijian flavour run throughout the day and into the evening. Children will enjoy loads of fun and entertainment with a mixture of games and experience with a definite Fiji flavour.

Activities change daily and include sandcastle competitions, toffee making, coconut husking, ball games and beach activities. Family meals can be taken at The Nuku Marau grill, located in the family pool area.

INCLUDES

- 5 nights 4 star accommodation in an Island Bure • Welcome tropical punch
- Invitation to weekly Manager's cocktail party • Free kids club for children 3 to 12 years
- Use of selected non-motorised water activities • Guided sunset kayaking
- Return coach and launch transfers from Nadi Airport

Refer to page 56 for more details on this property.

From **\$5315**^{*^} per family (CST)

[^]Price based on 5 nights at Castaway Island Resort in an Island Bure, valid 1 – 8 Apr, 29 Apr – 30 Jun, 12 Oct – 21 Dec 20, 9 Jan – 31 Mar 21. Family prices are based on children 0 to 11 yrs when using existing bedding.



DENARAU FAMILIES ESCAPE RADISSON BLU 5 NIGHTS



At the Radisson Blu Resort Fiji Denarau Island, you won't have to go far to experience island living. Toddlers can join the Roroqo Club which provides fun and engaging activities for children aged one to three years. The Blu Banana Kids Club for children aged four to 12 years will keep them entertained with games, crafts and more. Adults can join the little ones in the family pool or watch as they slide down Fiji's only white water tunnel slide at the resort's children's pool.

Adults can also make the most of Radisson's excellent facilities, including a day spa, 18 hole championship golf course and adults only swimming pool.

INCLUDES

- 5 nights 5 star accommodation in a Garden View One Bedroom Suite • Breakfast daily
- Free meals for up to 2 children 0 to 11 years when dining with paying adults in the resort restaurants • Free kids club for children 4 to 12 years
- Use of kayaks, sailing and windsurfing
- Return private car transfers from Nadi Airport

Refer to page 39 for more details on this property.

From **\$5689**^{*^} per family (RGB)

[^]Price based on 5 nights at Radisson Blu Resort Fiji, Denarau in a Garden View One Bedroom Suite, valid 1 Apr 20 – 31 Mar 21. Family prices are based on children 0 to 11 yrs when using existing bedding.



HEAVENLY ESCAPE OUTRIGGER FIJI BEACH RESORT 5 NIGHTS



At Outrigger Fiji Beach Resort, be embraced with a gracious Bula welcome in an exquisite seaside setting reminiscent of a time-honoured Fijian village. The spectacular Bebe Spa Fiji floats majestically above Outrigger Fiji Beach Resort on a plateau known to local villagers as Vakalomalagi Hill – Heavenly Hill. Surrounded by deliciously lush, undulating landscape, this location sits at a breathtaking altitude and offers the purest ocean views. At Bebe Spa Experience, traditional Fijian techniques and ingredients melded with the finest Asian spa treatments.

After a relaxing treatment, head to the Sundowner Bar & Grill for a cocktail or two and watch a magnificent Fijian sunset.

INCLUDES

- 5 nights 5 star accommodation in a Resort View King Room
- Welcome drink, local greeting, cool towel
- Use of selected non-motorised water activities
- Free yoga and meditation • Free kava ceremony
- Return coach transfers from Nadi Airport

Refer to page 49 for more details on this property.

From **\$1129**^{*^} per person twin share (REE)

[^]Price based on 5 nights at Outrigger Fiji Beach Resort in a Resort View King Room, valid 1 – 9 Apr, 25 Apr – 3 Jul, 1 Nov – 23 Dec 20, 11 Jan – 31 Mar 21.



INDULGENT EXPERIENCE SOFITEL FIJI RESORT & SPA 5 NIGHTS



At the Sofitel Fiji Denarau Island, adults can treat themselves to an experience of pure relaxation like no other at the exclusive Waitui Club. Indulge in a refined poolside experience of ultimate luxury set on the beachfront of tropical paradise. Offering a unique, adults only area designed to dovetail innate French elegance with exotic ambiance of island spirit, Waitui Beach Club is complete with a 25 metre lap pool, swim-up bar, private poolside cabanas and a gymnasium. It's a sun-drenched, playful space with a contemporary edge lending itself to a sublime and sophisticated oasis in which to unwind, wine and dine. Take a moment to appreciate famous Fijian sunsets with a glass of bubbly and escape into a world of total bliss.

INCLUDES:

- 5 nights 5 star accommodation in a Waitui Beach Club Oceanside King Room
- Breakfast daily • FJD150 resort credit at Solis Restaurant or Waitui Bar and Grill
- Cocktails and canapés every evening • Access to the adults only Waitui Beach Club
- Personalised pool butler service • Dedicated arrival lounge and beach club welcome pack • Return private car transfers from Nadi Airport

Refer to page 41 for more details on this property.

From **\$1799**^{*^} per person twin share (RGB)

[^]Price based on 5 nights at Sofitel Fiji Resort & Spa in a Waitui Beach Club Oceanside King Room, valid 25 Oct – 25 Dec 20, 9 Jan – 31 Mar 21.



ROMANTIC INTERLUDE TOKORIKI ISLAND RESORT 5 NIGHTS



From a private island beach picnic to sunset drinks, romance is alive and well at Tokoriki Island Resort. Indulge with fine dining and heavenly massages and explore a world of marine reefs right on your doorstep.

An exclusive adults only sanctuary situated in Fiji's spectacular Mamanuca Islands offering luxury, elegance and privacy. Just a few guests can be accommodated, making an ideal tropical romantic island escape.

INCLUDES:

- 5 nights 4½ star accommodation in a Beachfront Bure
- Afternoon tea daily
- Welcome lei, tropical drink and cool towel
- Use of non-motorised watersports
- Use of snorkelling equipment
- Cultural activities and nightly entertainment
- Return helicopter transfers from Nadi Airport

Refer to page 62 for more details on this property.

From **\$3589**^{*^} per person twin share (ZTK)

[^]Price based on 5 nights at Tokoriki Island Resort in a Beachfront Bure, valid 1 Apr 20 – 31 Mar 21.



ROMANTIC ESCAPE VOMO ISLAND 5 NIGHTS



Spoil the one you love. Vomo Island is the perfect escape for your romantic Fiji interlude! Vomo Island is a luxury private island, home to soft sandy beaches and clear blue waters. Relax with a rejuvenating massage and indulge with a romantic dinner for two in a private beach setting. With five star cuisine, day spa, a wide range of activities and renowned snorkelling, Vomo will make your getaway unforgettable.

INCLUDES:

- 5 nights 5 star accommodation in a Hillside Villa
- All meals and non-alcoholic beverages daily
- Invitation to weekly Manager's cocktail party
- Welcome sarong for each adult
- Use of snorkelling equipment • Use of golf course
- Use of non-motorised watersports activities
- Cultural activities and nightly entertainment
- Daily wash and fold laundry service
- Return helicopter transfers from Nadi Airport

Refer to page 61 for more details on this property.

From **\$4525**^{*^} per person twin share (VOM)

[^]Price based on 5 nights at Vomo Island in a Hillside Villa, valid 1 – 8 Apr, 27 Apr – 21 Jun, 11 Oct – 19 Dec 20, 10 Jan – 31 Mar 21.

EXPLORE THE REAL FIJI

Great Sights Fiji offers a wide range of half day and full day tours that connect you with the rich culture and diverse scenery that Fiji is famous for. With a professional team of Drivers and Guides, Great Sights Fiji ensures that you will have a memorable and authentic local experience.



For more information see the Great Sights Fiji tours including 'Discover Nadi', 'Coral Coast Heritage Tour' and 'Great Taste of Fiji' on page 26.



Pick up your Bula Saver Brochure from our airport lounge representatives upon arrival at Nadi International Airport to SHOP & SAVE!



Enjoy a variety of great value deals and savings when holidaying in Fiji with our fantastic Bula Saver Brochure.



NADI AIRPORT TRANSFERS

Get your holiday off to a great start with a door to door shared coach transfer or arrive in style by private vehicle. Operating from Nadi Airport 24 hours a day, 7 days a week, Tourist Transport Fiji will ensure you are transferred to your hotel in air-conditioned comfort. All transfers include a personal meet and greet service with a traditional Fijian welcome, bottled water and an Activity Book to keep the kids occupied. Vehicles range from modern coaches to four seat private vehicles, 4WDs and mini vans. There is also a fleet of wheelchair accessible vehicles available for the mobility impaired.

So sit back, relax and enjoy the passing scenery.

SPECIAL OFFER
 Travel in February or March and the first child travels for half the normal fare and up to two additional children travel for FREE on all coach transfers.

| | SHARE COACH | | SHARE COACH – FAMILY | PRIVATE VEHICLE |
|--|---------------------|--------------------|--------------------------------------|------------------------------|
| | Per Person Adult | Child# | Per Family 2 Adults & 2 Children# | Per Vehicle 1 to 4 People |
| 1 Apr 20 – 31 Mar 21 | | | | |
| Nadi Town/Wailoaloa Beach | \$31* [^] | \$16* [^] | \$85* [^] | \$64* [^] |
| Denarau | \$34* [^] | \$17* [^] | \$92* [^] | \$85* [^] |
| DoubleTree by Hilton | \$47* [^] | \$24* [^] | \$128* [^] | \$98* [^] |
| Vuda Marina/First Landing/Anchorage | \$48* [^] | \$24* [^] | \$131* [^] | \$103* [^] |
| Momi Bay+ /InterContinental+ /Shangri-La/Yauda Bay | \$59* [^] | \$30* [^] | \$160* [^] | \$208* [^] |
| Outrigger Fiji/Bedarra | \$59* [^] | \$30* [^] | \$160* [^] | \$229* [^] |
| Tambua Sands | \$59* [^] | \$30* [^] | \$160* [^] | \$255* [^] |
| Fiji Hideaway/Naviti/Warwick | \$68* [^] | \$34* [^] | \$186* [^] | \$255* [^] |
| Crusoes Retreat/Wellesley Resort | \$118* [^] | \$59* [^] | \$319* [^] | \$344* [^] |
| Pacific Harbour+ | \$121* [^] | \$61* [^] | \$327* [^] | \$365* [^] |
| Rakiraki+ /Volivoli Beach+ /Wananavu+ | \$138* [^] | \$69* [^] | \$374* [^] | \$365* [^] |
| Suva+ | \$138* [^] | \$69* [^] | \$374* [^] | \$435* [^] |

[^]Price based on one way to/from Nadi Airport. +Minimum 2 adults. #Valid for children 2 to 12 yrs. Prices to other destinations and larger vehicles also available.

BULA! WELCOME TO FIJI.

Our **EXCLUSIVE** meet and greet service will ensure your holiday gets off to a great start, with a warm Fijian welcome from someone who really knows the destination.

Just book one of our shared coach or private vehicle transfer options and on arrival in Fiji, make your way to the Airport Arrivals Office – it’s open every day, 24 hours a day. There you’ll find a friendly staff member to greet you with one of those famous Fijian smiles, check your travel arrangements and transfer you to your accommodation in air-conditioned comfort.

With our exclusive Meet & Greet Service, you’ll receive:

- A traditional Fijian welcome with a **shell lei**
- Bottle of **Fiji water**
- **2GB Traveller SIM Card** for each adult
- **Kids Activity Book** for each child under 10 years

A warm welcome and a wonderful Fijian holiday awaits!



*Prices are a guide only, subject to change and availability and are in New Zealand Dollars. From prices for accommodation are per room per night for 2 people, unless otherwise specified and based on the lowest room category for travel in low season. Prices for tours and transfers are per person, unless otherwise specified. For full terms and conditions including pricing and conditions, refer to the Booking Conditions at the back of this brochure.

TRANSFERS



SOUTH SEA CRUISES TRANSFERS

South Sea Cruises offer seamless, fast transfers to the Mamanuca and Yasawa Island resorts. Scheduled transfers operate from Denarau Marina several times a day, every day.

Modern catamarans with multiple lounges, outer viewing decks and fully licensed bars, mean you'll feel like you're on holiday before you even reach your destination.

Resort connections direct from Nadi Airport to Denarau Marina are also available (extra charge).

A courtesy coach pick-up is available from selected Nadi and Denarau accommodation to Denarau Marina.

Prices from Nadi Airport and selected Nadi accommodation also available.

| 1 Apr 20 – 31 Mar 21 | Adult | Child 5-15 yrs |
|---|---------------------|--------------------|
| Treasure Island/ Beachcomber Island | \$96* [^] | \$48* [^] |
| Malolo Island/Castaway Island | \$108* [^] | \$55* [^] |
| Likuliku/Tropica Island Resort | \$108* [^] | N/A |
| Mana Island | \$124* [^] | \$63* [^] |
| Barefoot Kuata/Waya Lailai/ Naqalia | \$128* [^] | \$64* [^] |
| Sheraton Tokoriki | \$134* [^] | \$68* [^] |
| Matamanoa Island/ Tokoriki Island | \$134* [^] | N/A |
| Octopus | \$138* [^] | \$69* [^] |
| Mantaray/Barefoot Manta/ Paradise Cove/Botaira/ Korovou/White Sandy Beach | \$146* [^] | \$74* [^] |
| Vomo | \$150* [^] | \$76* [^] |
| Navutu Stars/Long Beach/ Wai Tui/Coral View/Coconut Beach/Nanuya/Gold Coast/ Oarsmans/Blue Lagoon/ Nabua/Safe Landing | \$154* [^] | \$78* [^] |

[^]Price based on per person from Denarau Marina and selected Denarau hotels, one way.



24 HOUR WATER TAXI SERVICE

Mamanuca Express offers 24 hour water taxi service between Port Denarau Marina and all resorts throughout the stunning Mamanuca and lower Yasawa Islands in Fiji. This express speedboat transfer is perfect for a direct connection to your island resort from a late flight or early morning arrival. The modern vessels offer the ultimate in sea worthiness, safety, comfort and reliability. The team of experienced and friendly staff maintain a strong commitment to high safety standards and customer satisfaction combined with awesome local knowledge of the islands.

| 1 Apr 20 – 31 Mar 21 | Adult | Child 5-14 yrs |
|---|---------------------|--------------------|
| SHARED WATER TAXI | | |
| Treasure Island/ Beachcomber Island | \$86* ⁺ | \$43* ⁺ |
| Castaway Island/Malolo Island/Tropica Island Resort/Likuliku/Plantation Island Resort/Musket Cove/Lomani Resort | \$125* ⁺ | \$63* ⁺ |
| Mana Island/Sheraton Tokoriki/Tokoriki Island Resort/Matamanoa Island/ Vomo | \$149* ⁺ | \$75* ⁺ |

| | 1 to 4 People |
|---|---------------------|
| Treasure Island/ Beachcomber Island | \$397* [^] |
| Castaway Island/Malolo Island/Tropica Island Resort/Likuliku/Plantation Island Resort/Musket Cove/Lomani Resort | \$564* [^] |
| Mana Island/Sheraton Tokoriki/Tokoriki Island Resort/Matamanoa Island/ Vomo | \$679* [^] |

⁺Price based on per person from Denarau Marina, one way.
[^]Price based on per vessel from Denarau Marina, one way.



FAST BOAT TRANSFERS

SeaFiji has built a strong reputation for its 24 hour fast boat transfer services between Denarau and the Mamanuca Islands. All vessels are fast, comfortable, fully licensed, purpose built craft powered by the latest technology engines and navigational systems. The connections let you maximise your time on the island and minimise travelling time.

Prices for groups of 5 people or more also available.

| 1 Apr 20 – 31 Mar 21 | 1 to 4 People |
|---|---------------|
| Treasure Island/Beachcomber Island/Serenity Island | \$367*^A |
| Musket Cove/Plantation Island/Lomani Resort/Funky Fish/Tropica Island Resort/Malolo Island/Likuliku/Castaway Island/Mana Island | \$529*^A |
| Matamanoa Island/Sheraton Tokoriki/Tokoriki Island/Vomo | \$653*^A |

^Price based on per vessel from Denarau Marina, one way.



MALOLO CAT

Malolo Cat offers four scheduled launch transfers daily between Denarau Marina and Malolo Lailai Island. Get off to a great start by cruising 50 minutes across the beautiful Fiji waters in comfort. The service includes a scheduled coach transfer from Nadi Airport, Nadi or Denarau accommodation to Denarau Marina.

| 1 Apr 20 – 31 Mar 21 | Adult | Child 3-15 yrs |
|--|---------|----------------|
| Plantation Island Resort/Lomani Island Resort/Musket Cove Resort | \$69*^A | \$35*^A |

^Price based on per person from Nadi Airport, Nadi, Denarau accommodation and Denarau Marina, one way.



HELICOPTER TRANSFERS

Fiji's premium helicopter and charter airline service specialises in efficient and reliable air transfers throughout Fiji. The Resort Express Service meets and greets all passengers and transfers guests to a private lounge offering complimentary cold beverages and Wi-Fi.

Inter-island transfers and other locations also available.

| 1 Apr 20 – 31 Mar 21 | Adult | Child 2-12 yrs |
|---|----------|----------------|
| Treasure Island/Anchorage/First Landing | \$428*^A | \$300*^A |
| Plantation/Lomani/Musket Cove/DoubleTree by Hilton/Momi Bay | \$467*^A | \$327*^A |
| Vomo/Sheraton Tokoriki/Mana/Castaway/Six Senses/Funky Fish | \$559*^A | \$392*^A |
| Matamanoa/Tokoriki Island Resort/Likuliku/Tropica | \$559*^A | N/A |

^Price based on per person, minimum 2 adults from Nadi, one way.



SEAPLANE TRANSFERS

Pacific Island Air flies direct from Nadi Airport to the Fijian island resorts.

20kg baggage allowance per person. Inter-island transfers prices also available. Family prices also available.

| 1 Apr 20 – 31 Mar 21 | Adult | Child 2-12 yrs |
|--|----------|----------------|
| Castaway Island/ Mana Island/Musket Cove/Malolo Island/Plantation Island | \$340*^A | \$205*^A |
| Lomani/Likuliku/Tropica Island | \$340*^A | N/A |
| Tokoriki Island Resort | \$413*^A | N/A |
| Vomo | \$351*^A | \$205*^A |
| Mantaray Island Resort/Octopus Island Resort/Paradise Cove | \$361*^A | \$361*^A |
| Nanuya Island Resort/Blue Lagoon Beach Resort | \$388*^A | \$388*^A |

^Price based on per person, minimum 2 adults from Nadi Airport, one way.



AIRPLANE TRANSFERS

Pacific Island Air offers daily airplane flights at very affordable prices. The refurbished planes seat six passengers. Airplane flights operate seven days a week on demand during daylight hours.

Charter flights seat up to 6 people. 20kg baggage allowance per person. Inter-island transfers and other location prices also available.

| 1 Apr 20 – 31 Mar 21 | 1 to 6 People |
|---|---------------|
| Lomani/Musket Cove/Plantation Island Resort | \$835*^A |
| Mana Island | \$1027*^A |

^Price based on per airplane charter from Nadi Airport, one way.



HELICOPTER TRANSFERS

Pacific Island Air offers fast, efficient and reliable helicopter transfers to most resorts and islands in Fiji.

20kg baggage allowance per person. Inter-island transfers and other location prices also available.

| 1 Apr 20 – 31 Mar 21 | Adult | Child 2-12 yrs |
|--|----------|----------------|
| Castaway Island/Musket Cove/Plantation Island/Six Senses/Treasure Island | \$437*^A | \$262*^A |
| Likuliku/Tropica Island Resort/Lomani | \$437*^A | N/A |
| Mana Island/Matamanoa Island/Sheraton Tokoriki/Vomo | \$477*^A | \$286*^A |
| Tokoriki Island Resort | \$477*^A | N/A |

^Price based on per person, minimum 2 adults from Nadi Airport, one way.

*Prices are a guide only, subject to change and availability and are in New Zealand Dollars. From prices for accommodation are per room per night for 2 people, unless otherwise specified and based on the lowest room category for travel in low season. Prices for tours and transfers are per person, unless otherwise specified. For full terms and conditions including pricing and conditions, refer to the Booking Conditions at the back of this brochure.



AVIS

Why not add Avis to your travel plans and make the most of your holiday by enjoying the flexibility and convenience that an Avis car rental provides. Avis Fiji is situated at six locations around Viti Levu and Vanua Levu, including a 24 hour service at Nadi International Airport. Offering a wide range of late model vehicles to choose from, all at great rates, renting with Avis is sure to make your holiday escape more enjoyable. All Avis vehicles are air-conditioned and come with 24 hour roadside assistance. Plus you get unlimited kilometres as well as free maps to help you find your destination.

Includes:

- Unlimited kilometres
- Loss Damage Waiver
- Taxes
- Administration fees
- All vehicles include air-conditioning

Does Not Include:

- Excess Reduction
- One way rental fees • Stamp duty
- Concession Recovery Fee
- Delivery/collection fees for non-Avis locations
- Fuel • Bond

Excess:

In the event of loss or damage, an Excess applies to all vehicles. Optional Excess Reduction can be purchased direct for an additional fee. For Group B, an Excess of FJD5,000 applies, reduced to FJD1,000 with payment of an Excess Reduction of FJD21 per day. For Groups C, S, P, G, K and V, an Excess of FJD7,000 applies, reduced to FJD1,500 with payment of an Excess Reduction of FJD24 per day. For Groups D, L, H, W and Z an Excess of FJD10,000 applies, reduced to FJD2,000 with payment of an Excess Reduction of FJD36 per day. A Zero Excess Reduction can also be purchased for an additional FJD50 per day for Groups B, C, S, G, V, P and K and FJD60 per day for Groups L, D, H and Z.

Based on per vehicle per day (24 hour hire period). Minimum age restrictions and age surcharges apply. A full driver's licence, credit card and security bond is required on collection. Tolls, fuel, additional driver and one way fees apply. Vehicles are subject to availability and a similar vehicle to those pictured may be substituted. Not all vehicles are available at all locations. Check with your travel agent for details.



- Overnight Bag
- Medium Suitcase
- Large Suitcase

TOYOTA YARIS (or similar)

GROUP B

- 4 door • Auto
- 2 Cylinders
- 1.3 litre
- Radio
- Driver's airbag



x4



| 1-2 DAYS | 3-6 DAYS | 7+ DAYS |
|----------|----------|---------|
| \$118* | \$114* | \$96* |

1 APR 20 – 31 MAR 21

TOYOTA CAMRY (or similar)

GROUP G

- 4 Door • Auto • 4 Cylinders
- 2.4 litre • Radio/CD
- Power windows
- Remote/central locking
- Dual airbags • Cruise control



x5



| 1-2 DAYS | 3-6 DAYS | 7+ DAYS |
|----------|----------|---------|
| \$174* | \$170* | \$153* |

1 APR 20 – 31 MAR 21

TOYOTA RAV4 (or similar)

GROUP K

- 4WD • 4 Door
- Auto • 4 Cylinders
- 2 litre • Radio/CD
- Power steering
- Dual airbags



x5



| 1-2 DAYS | 3-6 DAYS | 7+ DAYS |
|----------|----------|---------|
| \$186* | \$180* | \$159* |

1 APR 20 – 31 MAR 21

TOYOTA HIACE VAN (or similar)

GROUP P

- 4 Door • Manual
- 4 Cylinders • 2.5 litre
- Radio • Power windows
- Central locking
- Dual airbags



x8

Luggage capacity dependant on passenger numbers

| 1-2 DAYS | 3-6 DAYS | 7+ DAYS |
|----------|----------|---------|
| \$174* | \$170* | \$147* |

1 APR 20 – 31 MAR 21

TOYOTA PRADO (or similar)

GROUP Z

- 5 Door • Auto
- 4 Cylinders
- 3.4 litre • Radio/CD
- Power steering
- Dual airbags



x5



| 1-2 DAYS | 3-6 DAYS | 7+ DAYS |
|----------|----------|---------|
| \$323* | \$313* | \$273* |

1 APR 20 – 31 MAR 21

TOYOTA INNOVA (or similar)

GROUP V

- 5 Door • Auto
- 4 Cylinders
- 2 litre • Radio/CD
- Remote/central locking
- Dual airbags



x7



| 1-2 DAYS | 3-6 DAYS | 7+ DAYS |
|----------|----------|---------|
| \$158* | \$154* | \$135* |

1 APR 20 – 31 MAR 21

TOYOTA COROLLA (or similar)

GROUP C

- 4 Door • Auto • 4 Cylinders
- 1.6 litre • Radio
- Air-conditioning
- Central locking
- Dual airbags



x5



| 1-2 DAYS | 3-6 DAYS | 7+ DAYS |
|----------|----------|---------|
| \$141* | \$137* | \$119* |

1 APR 20 – 31 MAR 21

TOYOTA FORTUNER (or similar)

GROUP H

- 4WD • 5 Door Auto
- 4 Cylinders
- 3.0 litre turbo diesel
- Radio/CD
- Remote/central locking



x5



| 1-2 DAYS | 3-6 DAYS | 7+ DAYS |
|----------|----------|---------|
| \$293* | \$284* | \$248* |

1 APR 20 – 31 MAR 21

TOYOTA HILUX DUAL CAB (or similar)

GROUP D

- 4WD • 4 Door
- Auto • 4 Cylinders
- 2.8 litre • Radio/CD
- Power steering
- Dual airbags



x5

Luggage capacity dependant on passenger numbers

| 1-2 DAYS | 3-6 DAYS | 7+ DAYS |
|----------|----------|---------|
| \$248* | \$240* | \$208* |

1 APR 20 – 31 MAR 21

TOYOTA PRIUS (or similar)

GROUP S

- 4 Door • Auto • 4 Cylinders
- 1.8 litre hybrid
- Radio/CD
- Power steering
- Dual airbags



x5



| 1-2 DAYS | 3-6 DAYS | 7+ DAYS |
|----------|----------|---------|
| \$151* | \$148* | \$129* |

1 APR 20 – 31 MAR 21

TOYOTA HILUX STANDARD (or similar)

GROUP L

- 4 Door • Manual
- 4 Cylinders
- 2.8 litre • Radio/CD
- Power steering
- Dual airbags



x5

Luggage capacity dependant on passenger numbers

| 1-2 DAYS | 3-6 DAYS | 7+ DAYS |
|----------|----------|---------|
| \$208* | \$201* | \$171* |

1 APR 20 – 31 MAR 21

TOYOTA LANDCRUISER (or similar)

GROUP W

- 5 Door • Auto
- 8 Cylinders
- 4.5 litre engine
- Sunroof • Power windows
- Dual airbags

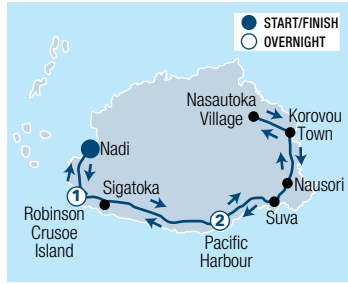


x5



| 1-2 DAYS | 3-6 DAYS | 7+ DAYS |
|----------|----------|---------|
| \$229* | \$221* | \$189* |

1 APR 20 – 31 MAR 21



FEEJEE BEACH & CULTURE 3 NIGHTS

Trek through flat tropical jungle, snorkel with marine life and pose by the largest coastal waterfall. Over four days, watch a renowned fire dance show, dip in the healing comfort of hot mud pools, visit a local village, participate in a Fijian kava ceremony and visit the eerie passage ways of an ancient historic snake cave, not forgetting the thrill of sand boarding. This one's for the restless heart! A night of revelling at Robinson Crusoe Island and two nights at Fiji's adventure capital, Pacific Harbour, offer an unforgettable getaway.

INCLUDES

- 3 nights 2½ to 3 star accommodation
- Continental breakfast at Robinson Crusoe Island
- Seven Chamber Historical Snake Cave tour
- Visit Nasautoka Village
- Bilibili rafting adventure
- Sigatoka Sand Dunes
- Admission to Sabeto hot mud pools
- Transfers between all accommodations

TOUR TYPE Escorted

DEPARTS Wed, Sat from Nadi (NAN) at 8am

CONCLUDES Nadi at 6pm

Family prices also available.

| | Adult twin share | Adult sole use |
|----------------------|------------------|----------------|
| 1 Apr 20 – 31 Mar 21 | \$752* | \$1111* |



CULTURE & MARINE ECO EXPERIENCE 7 NIGHTS

Rejuvenate your soul with a seven night reverie of snorkelling among Manta rays and other marine life. Over eight days, spend the night on Robinson Crusoe Island and enjoy a rainforest trek. Tour Suva and visit the Seven Chamber Historical Snake Caves. Visit a local village and partake in a kava ceremony as well as bilibili rafting along the Wainibuka River. See the Sabeto Valley and go sand boarding down the Sigatoka Sand Dunes. Once at Barefoot Manta, meet the team involved in the Marine Project and tour the marine park. Manta Island is unescorted.

INCLUDES

- 7 nights 2½ to 3 star accommodation
- 2 breakfasts • Suva City Sights tour
- Bilibili rafting adventure
- Seven Chamber Historical Snake Cave tour
- Admission to Sabeto hot mud pools
- Visit Nasautoka Village
- Transfers between all accommodations

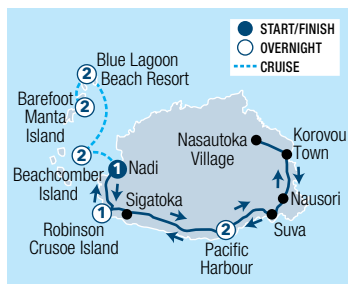
TOUR TYPE Escorted

DEPARTS Wed, Sat from Nadi (NAN) at 8am

CONCLUDES Nadi at 6pm

Family prices also available.

| | Adult twin share | Adult sole use |
|----------------------|------------------|----------------|
| 1 Apr 20 – 31 Mar 21 | \$1612* | \$2113* |



FEEJEE FIVE 10 NIGHTS

This flexible travel pass gives 11 days of Fijian experiences in idyllic surrounds. Travel to Nadi for a tour through the city, enjoy a jungle boat ride, trek through the rainforest and refreshing waterfalls. Enjoy a City Sights tour of Suva before exploring the Snake Caves and Nasautoka Village. Have fun with Bilibili rafting and relax at the Sabeto hot mud pools. Enjoy all the facilities on offer at Beachcomber Island, Blue Lagoon Resort and Barefoot Manta Island. Island hopping is unescorted.

INCLUDES

- 10 nights 2½ to 3 star accommodation
- 2 breakfasts • Bilibili rafting adventure
- Seven Chamber Historical Snake Cave tour
- Suva City Sights tour
- Admission to Sabeto hot mud pools
- Visit Nasautoka Village
- Launch transfers between Beachcomber, Blue Lagoon Resort and Barefoot Manta Island
- Transfers between all accommodations

TOUR TYPE Escorted

DEPARTS Wed, Sat from Nadi (NAN) at 8am

CONCLUDES Nadi at 6pm

| | Adult twin share | Adult sole use |
|----------------------|------------------|----------------|
| 1 Apr 20 – 31 Mar 21 | \$1970* | \$2972* |

*Prices are a guide only, subject to change and availability and are in New Zealand Dollars. From prices for accommodation are per room per night for 2 people, unless otherwise specified and based on the lowest room category for travel in low season. Prices for tours and transfers are per person, unless otherwise specified. For full terms and conditions including pricing and conditions, refer to the Booking Conditions at the back of this brochure.

ISLAND HOPPING



AWESOME ADVENTURES

Awesome Adventures make experiencing the real Fiji simple with an excellent range of ways to explore the Mamanuca and Yasawa Island.

Choose from a range of package options to suit different tastes and budgets. Everything can be pre-booked making your adventure incredible easy.

Accommodation Ratings

Awesome Adventures Fiji offers two levels of accommodation to suit different styles or budget.

Simple Stays: Resorts are typically basic with simple, local meals included. Towels and toiletries are not provided and there is no hot water, just locally supplied, tepid shower water.

Relaxed Resorts: Accommodation is more modern with a higher standard of facilities, yet still with a strong Fijian flair.

BULA PASS & AWESOME PASS

For those who like to explore on their own, this is the perfect way to discover the Yasawa Islands.

BULA PASS

This Fiji Island hopping Bula Pass includes transfers only and offers the freedom to explore at your leisure. The pass is valid for 5, 7, 10, 12 or 15 days and includes travel between Port Denarau, Mamanuca and Yasawa Islands.

Includes:

- Inter-island transfers

| 1 Apr 20 – 31 Mar 21 | Adult |
|----------------------|---------------|
| 5 Days | \$340* |
| 7 Days | \$440* |
| 9 Days | \$516* |
| 11 Days | \$573* |
| 13 Days | \$608* |
| 15 Days | \$646* |

AWESOME PASS

This is the same as the Bula Pass but includes pre-paid accommodation, providing a hassle-free way to explore the Yasawas. Book a minimum of your first two nights in advance and then book the rest as you go onboard the Awesome Adventures vessel.

Includes:

- Inter-island transfers
- Pre-paid accommodation

| 1 Apr 20 – 31 Mar 21 | Adult |
|----------------------|------------------|
| 5 Days/4 Nights | \$781*^A |
| 7 Days/6 Nights | \$1100*^A |
| 9 Days/8 Nights | \$1396*^A |
| 11 Days/10 Nights | \$1673*^A |
| 13 Days/12 Nights | \$1927*^A |
| 15 Days/14 Nights | \$2186*^A |

^Price based on dormitory accommodation and minimum night stays may apply at each property. Child prices also available. Awesome Pass based on Simple Stays accommodation. Price to upgrade to a bure or Relaxed Resorts accommodation option also available. Meals must be booked in conjunction with accommodation for Relaxed Resorts. Ask your travel agent for more details.



ADD TO YOUR ISLAND ADVENTURE

You might need to stay the first or last night in Nadi prior to boarding your vessel to the Yasawa Islands. For that reason, the Bula Fiji Welcome Pack and the Moce Fiji Departure Pack can be added onto your Yasawa adventure to minimise the hassle!

BULA FIJI WELCOME PACK

Upon arrival into Fiji, you will be met at the airport and transferred to your choice of accommodation – Nadi Bay Hotel, Aquarius on the Beach, Smugglers Cove or Oasis Palms Hotel.

Includes:

- 1 night accommodation
- Meet and greet at the Nadi International Airport
- One way transfer to accommodation
- One way transfer to Port Denarau
- Fiji Vodafone sim including FJD7 talk time and 2 gigabytes of data

| 1 Apr 20 – 31 Mar 21 | Adult |
|-------------------------|-----------------|
| Dormitory accommodation | \$59*^A |
| Poolside Room | \$113*^A |

^Price is based on Oasis Palms Hotel.

MOCE FIJI DEPARTURE PACK

It's recommended to also pre book the last night in Port Denarau upon returning from the Yasawa Islands.

Again, it's just another way to make your holiday as hassle free as possible!

Includes:

- 1 night accommodation
- One way transfers from Port Denarau Marina to accommodation
- One way transfers from accommodation to Nadi International Airport

| 1 Apr 20 – 31 Mar 21 | Adult |
|-------------------------|----------------|
| Dormitory accommodation | \$38*^A |
| Poolside Room | \$92*^A |

^Price is based on Oasis Palms Hotel.

AWESOME EXPERIENCES PACKAGES

The Awesome Experiences package includes the best Yasawa and Mamanuca Island activities on offer such as snorkelling with the sharks. Activities are determined by what is available at each resort.

The Awesome Experiences Package is an additional cost for your pre-booked activities so you won't miss out.

Ask your travel agent for details.





SHORT & SHARK – 2 ISLANDS 2 NIGHTS

Discover the stunning Mamanuca and Yasawa Islands during this two island short break. The crystal clear waters and coral reefs are teeming with marine life. Enjoy the many activities that are available at South Sea Island, maybe try an introductory dive, indulge in a massage or just laze by the pool.

The following day travel to Barefoot Kuata Resort in the Yasawa Islands and take part in the Ultimate Encounters: Shark Snorkel Experience with whitetip and blacktip reef sharks. Head back to the resort and take a walk to the islands summit or relax by the pool with a cool drink.

INCLUDES

- 2 nights accommodation
- Breakfast, lunch and dinner daily
- Shark Snorkel Experience
- Transfers throughout
- Selected activities

TOUR TYPE Independent

DEPARTS Daily from Port Denarau Marina (RGB) at 8:30am

CONCLUDES Denarau Marina

| 1 Apr 20 – 31 Mar 21 | Adult |
|--|---------------|
| Dormitory accommodation – Simple Stays (multi share) | \$389* |
| Bure accommodation – Simple Stays | \$763* |



SEA'S EVERY DAY – 3 ISLANDS 3 NIGHTS

Beautiful beaches, friendly Fijians and crystal clear waters will fill your days in the Mamanuca and Yasawa Islands during this three island, three night adventure. Snorkel in the turquoise waters surrounding Modriki in the Mamanuca's, where the Tom Hanks film Cast Away was set before meeting the locals at a traditional Fijian village. One of the most popular experiences in the Yasawas is the Shark Snorkel Experience where you can get in the water with reef sharks. If travelling between May and October there is an opportunity to swim with the majestic Manta rays.

INCLUDES

- 3 nights accommodation
- Breakfast, lunch and dinner daily
- Shark Snorkel Experience
- Transfers throughout

TOUR TYPE Independent

DEPARTS Daily from Port Denarau Marina (RGB) at 8:30am

CONCLUDES Denarau Marina

| 1 Apr 20 – 31 Mar 21 | Adult |
|--|----------------|
| Dormitory accommodation – Simple Stays (multi share) | \$717* |
| Bure accommodation – Simple Stays | \$1315* |



COCONUT CRUISER – 4 ISLANDS 6 NIGHTS

Meet the locals, discover their culture, traditions and see the best of the Yasawa Islands with this week long package. Explore the Yasawa islands from the Blue Lagoon region as well as the stunning monolithic mountains in the Mamanuca Islands.

Enjoy island walks, magnificent beaches and coral. Diehard snorkellers will not be disappointed with the variety of reef to discover and for adrenalin junkies, try snorkelling with sharks! At the end of the day, after all this activity, chill in a hammock and soak up paradise.

INCLUDES

- 6 nights accommodation
- Breakfast, lunch and dinner daily
- Transfers throughout
- Selected activities

TOUR TYPE Independent

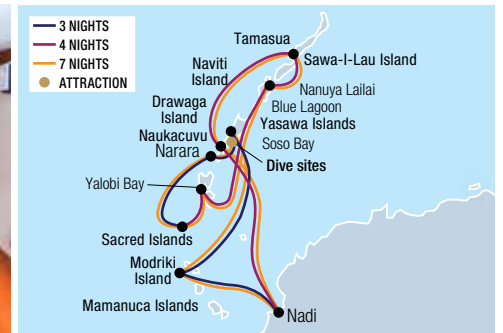
DEPARTS Daily from Port Denarau Marina (RGB) at 8:30am

CONCLUDES Denarau Marina

Awesome Experiences Package add on \$412* per adult.
Refer to page 22 for Awesome Experiences details.

| 1 Apr 20 – 31 Mar 21 | Adult |
|--|----------------|
| Dormitory accommodation – Simple Stays (multi share) | \$1113* |
| Bure accommodation – Simple Stays | \$1247* |

ISLAND CRUISING



FIJI PRINCESS – BLUE LAGOON CRUISES

Celebrating 70 years sailing the tropical waters of the South Pacific, Blue Lagoon Cruises specialises in offering three, four and seven night itineraries through Fiji's spectacular Mamanuca and Yasawa Island groups. The Fiji Princess accommodates a maximum of 68 guests allowing for a personal and friendly atmosphere, which is complemented by the enthusiastic all-Fijian crew. The ship's small size means it can access bays and islands that would be impossible to reach in a larger ship. With a maximum of four hours cruising per day there is more time for exploring onshore. Visit remote island villages, discover ancient Fijian culture and enjoy the private beach on Nanuya Lailai Island. Swim with Manta rays (seasonal) and stop off at the Sacred Islands and Sawa-I-Lau Caves. A Blue Lagoon Cruise is an ideal way to experience the hidden wonders of the South Pacific you previously thought only existed in the movies. Each and every day and evening there is an array of wonderful activities and memorable encounters with the local people to enjoy.

Vessel Features:

- Free Wi-Fi (where reception available)
- Senikai Spa (day spa) • Open air dining room
- Shaded sky deck bar and saloon bar

- Splash pool
- Guest laundry (self service)
- Lounge area

Cabin Features:

- Air-conditioning • Private en suite
- In-room movies • Hair dryer
- External windows with ocean views
- Coffee pod machine and tea selection

Includes:

- On board accommodation
- All meals including tea, barista coffee, morning and afternoon tea and juice
- Complimentary mini bar (on the day of departure only) includes premium beer and soft drinks, French sparkling wine, Fijian chocolate and snacks
- Gift of a tote bag per room and reusable drink bottle and sulu (sarong) per person
- Welcome Captain's champagne cocktail
- Filtered mineral water stations throughout the vessel
- All scheduled cruise excursions and activities
- Entrance fees for all activities and village visits

- Traditional Fijian entertainment
- Use of on board facilities
- Snorkelling equipment and use of all watersports at Nanuya Lailai (4 and 7 night cruise)
- Ship to shore transfers • All port charges and taxes

Departure Information:

From Port Denarau

3 NIGHT EXPLORER CRUISE

Departs: Friday at 3pm

Returns: Monday at 3pm

4 NIGHT WANDERER CRUISE

Departs: Monday at 12:15pm

Returns: Friday at 10am

7 NIGHT ESCAPE TO PARADISE CRUISE

Departs: Friday at 3pm

Returns: Friday at 10am

Sole use, child prices and launch transfer from Mamanuca Island resorts also available. Family Cruise departures also available, ask your travel agent for details.



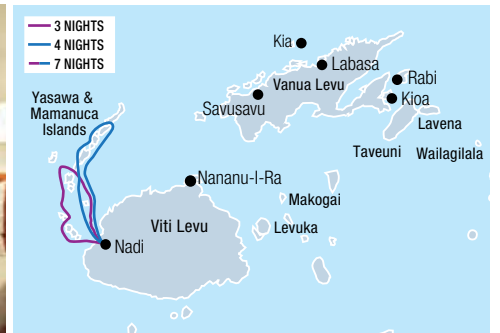
| 3 NIGHT EXPLORER CRUISE | |
|-------------------------|---|
| Day 1: | Depart Denarau Marina to Modriki Island |
| Day 2: | Soso Bay |
| Day 3: | Naukacuvu Island |
| Day 4: | Sacred Isles and arrive Port Denarau |

| 4 NIGHT WANDERER CRUISE | |
|-------------------------|-----------------------------------|
| Day 1: | Depart Port Denarau to Yalobi Bay |
| Day 2: | Blue Lagoon |
| Day 3: | Sawa-I-Lau Island |
| Day 4: | Drawaga Island |
| Day 5: | Arrive Port Denarau |

| 7 NIGHT ESCAPE TO PARADISE CRUISE | |
|--|--|
| Combine the 3 and 4 night cruise for a 7 Night Escape to Paradise Cruise | |

| 1 Apr 20 – 31 Mar 21 | Adult |
|---|------------------|
| 3 NIGHT | |
| Hibiscus Cabin | \$1932**^ |
| Orchid Cabin | \$2161**^ |
| 4 NIGHT | |
| Hibiscus Cabin | \$2673**^ |
| Orchid Cabin | \$2979**^ |
| 7 NIGHT | |
| Hibiscus Cabin | \$4277**^ |
| Orchid Cabin | \$4812**^ |
| ^Price based on per person twin share. | |

* Prices are a guide only, subject to change and availability and are in New Zealand Dollars. From prices for accommodation are per room per night for 2 people, unless otherwise specified and based on the lowest room category for travel in low season. Prices for tours and transfers are per person, unless otherwise specified. For full terms and conditions including pricing and conditions, refer to the Booking Conditions at the back of this brochure.



REEF ENDEAVOUR – CAPTAIN COOK CRUISES

MV Reef Endeavour cruises are designed to offer you an authentic and personal experience of the South Pacific.

Discover the real Fiji over 3, 4, or 7 nights with a Captain Cook Cruise. Enjoy spectacular beaches, crystal clear waters, warm and friendly culture. MV Reef Endeavour small ship cruises to the Mamanuca and Yasawa Islands are designed to offer guests an authentic and personal experience.

Wake each day to idyllic sites and exclusive destinations. Snorkel over magnificent coral reefs twice a day and experience the culture first hand at traditional island villages and handicraft markets.

Vessel Features:

- Free Wi-Fi (Yasawa Lounge)
- Freshwater pool • Spa pool
- Sun deck • Lounges (2)
- Bars (3 – 1 cocktail, 1 pool, 1 sundeck)
- Dining saloon • Day spa • Mini gym
- Kids Club (5-9 years) • Glass bottom boat • Gift shop
- Guest library/lecture room • Guest laundry
- PADI 5 star onboard dive shop (extra charge)

Porthole Cabins, Suites & Ocean Staterooms Features:

- Air-conditioning
- Private en suite
- Daily servicing

Includes:

- On board accommodation
- All meals including 24 hour tea and coffee facilities
- Guided island, village and school tours
- Daily island stopovers and water activities
- Snorkelling and glass bottom boat tours
- Tropical island lovo feast and kava ceremony
- Use of snorkelling equipment, kayaks and stand up paddle boards
- Entertainment
- Pick-up/drop-off at selected island resorts (Sat)
- Drop-off to selected Nadi or Denarau accommodation after cruise

Departure Information:

From Port Denarau

3 NIGHT MAMANUCA & SOUTHERN YASAWA ISLANDS CRUISE

- Day 1: Depart Denarau Marina to Nuku-I-Mana
- Day 2: Monuriki and Monu Bay
- Day 3: Sacred Islands and Waya Islands
- Day 4: Waya Islands to Denarau Marina

4 NIGHT NORTHERN YASAWA ISLANDS CRUISE

- Day 1: Depart Denarau Marina to Tivua Island
- Day 2: Brothers Island and Naviti Island
- Day 3: Sawa-I-Lau
- Day 4: Yaqeta and Drawaqa
- Day 5: Arrive into Port Denarau

7 NIGHT MAMANUCA & YASAWA ISLANDS CRUISE

Combine the 3 and 4 night cruise for a 7 Night Mamanuca and Yasawa Islands Cruise

3 NIGHT MAMANUCA & SOUTHERN YASAWA ISLANDS CRUISE

Departs: Saturday at 12 noon

Returns: Tuesday at 9am

4 NIGHT NORTHERN YASAWA ISLANDS CRUISE

Departs: Tuesday at 1pm

Returns: Saturday at 9am

7 NIGHT MAMANUCA & YASAWA ISLANDS CRUISE

Departs: Tuesday at 1pm, Saturday at 12 noon

Returns: Tuesday and Saturday at 9am

7 Night Colonial Discovery Cruise, 7 Night Four Cultures Discovery Cruise and 11 Night Lau and Kadavu Discovery Cruise prices also available. Sole use, triple share and child prices also available. Not suitable for children under 5 yrs. 7 Night Yasawa Islands Cruise is back to back 3 and 4 night cruises. Between departures, free tours are available.



1 Apr 20 – 31 Mar 21

Adult

3 NIGHT

| | |
|-------------------|---------------------|
| D Porthole Cabin | \$1856 [^] |
| C Ocean Stateroom | \$2201 [^] |
| B Ocean Stateroom | \$2432 [^] |
| A Tabua Suite | \$2923 [^] |

4 NIGHT

| | |
|-------------------|---------------------|
| D Porthole Cabin | \$2491 [^] |
| C Ocean Stateroom | \$2941 [^] |
| B Ocean Stateroom | \$3242 [^] |
| A Tabua Suite | \$3897 [^] |

7 NIGHT

| | |
|-------------------|---------------------|
| D Porthole Cabin | \$4142 [^] |
| C Ocean Stateroom | \$4893 [^] |
| B Ocean Stateroom | \$5391 [^] |
| A Tabua Suite | \$6477 [^] |

[^]Price based on per person twin share.

*Prices are a guide only, subject to change and availability and are in New Zealand Dollars. From prices for accommodation are per room per night for 2 people, unless otherwise specified and based on the lowest room category for travel in low season. Prices for tours and transfers are per person, unless otherwise specified. For full terms and conditions including pricing and conditions, refer to the Booking Conditions at the back of this brochure.

TOURS



ESSENCE TRAVEL LOUNGE

Refresh, relax and rest while in transit at Fiji Airport. Located only three minutes from the Nadi International Airport, Essence Travel Lounge offers a wide range of services for the whole family including lounge areas, day spa, float therapy, showers, movie room, free Wi-Fi, licensed café, Fiji made shopping, kids club and more!

Includes:

- Access to lounge facilities
- Local Nama sorbet
- Free Wi-Fi
- Luggage storage
- 15 minute spa foot ritual
- FJD100 spa voucher (Rejuvenation Pass)
- Return transfers to and from Nadi airport

Open: 6am – 8pm daily

Child prices also available.

| | Adult |
|----------------------|--------------|
| 1 Apr 20 – 31 Mar 21 | |
| Transit Pass | \$24* |
| Rejuvenation Pass | \$77* |



FLAVOURS OF FIJI COOKING SCHOOL

Discover Fiji's local food culture! Creating delicious island favourites, our cooks share their traditional cooking techniques, helpful hints & entertaining stories. Suitable for experienced cooks & beginners, our food culture experience takes you on a mouth-watering journey of Fiji's rich cultural history.

Includes:

- Food culture presentation
- Cooking lesson • Lunch
- Refreshments • Take home recipes

Duration: 3 hours

Departs: Mon to Sat from Flavours of Fiji Cooking School, Denarau Island at 9:30am

Other Tour Options:

Cooking Lesson & Market Tour **\$137*** per adult, **\$101*** per child.

| | Adult | Child 8-16 yrs |
|----------------------|---------------|----------------|
| 1 Apr 20 – 31 Mar 21 | \$119* | \$83* |



FIJI UNTOLD

Be part of an enriching traditional performance with a contemporary twist told through song and dance. The FIJI UNTOLD show will captivate your senses with its Energy! Spirit! Mana! The journey begins with an enticing performance that will awaken your senses and lead you into a state of the art Big Top where you leave with a deeper experience into Fiji's myths and legends.

Includes:

- Light snacks and non-alcoholic beverages
- World class Broadway style performance and captivating dances
- Transfers from selected Nadi and Denarau Island accommodation

Duration: 3 hours 30 minutes

Departs: Thu and Fri from Nadi at 6:30pm

Silver, Gold and Diamond ticket prices also available.

| | Adult | Child 2-12 yrs |
|-------------------|---------------|----------------|
| 1 Apr – 21 Dec 20 | \$80*^ | \$57*^ |

^Price based on Bronze ticket.



DISCOVER NADI

Explore the Garden of the Sleeping Giant, famous for its collection of orchids. Visit the chiefly village of Viseisei, the legendary landing site of the first Fijians. Continue into Nadi to the site of the largest Hindu temple in the South Pacific. Lastly, take in the colourful sights and friendly faces at the Nadi Market.

Includes:

- Garden of the Sleeping Giant tour
- Viseisei Village tour
- Nadi town and markets
- Sri Siva Subramaniya Swami Temple
- Expert guide
- Return transfers from Nadi and Denarau accommodation

Duration: 4 hours 30 minutes

Departs: Mon to Sat from Nadi at 8:30am

| | Adult | Child 2-12 yrs |
|----------------------|--------------|----------------|
| 1 Apr 20 – 31 Mar 21 | \$76* | \$38* |



GREAT TASTE OF FIJI

Be prepared to step back in time on this inland safari exploration. Start at the feet of Nadi's famous 'Sleeping Giant' and head up past the cane fields to the picturesque and peaceful Natalau Village. On arrival visitors are welcomed with a 'Sevusevu' or Kava ceremony. Get a taste of Fijian food by participating in the preparation and cooking of meals. There is the option of joining your guide for a brief walk through the village, preschool and the village gardens.

Includes:

- Village tour including entry fee
- Kava ceremony • Village lunch
- Air-conditioned 4WD vehicle
- Return transfers from Nadi and Denarau accommodation

Duration: 4 hours

Departs: Mon to Fri from Nadi at 8:30am

| | Adult | Child 2-12 yrs |
|----------------------|---------------|----------------|
| 1 Apr 20 – 31 Mar 21 | \$112* | \$56* |



CORAL COAST HERITAGE TOUR

Explore one of Fiji's most famous tourist regions the Coral Coast. Renowned for its amazing shore line, the Coral Coast has plenty to offer and this tour covers the highlights. Take in the amazing lookout over the Mamanuca Island Group from the World War II Momi Battery. Visit Lomawai Village – the home of salt making. Finish off the day with a short 20 minute walk in the rain forest to Biausevu Waterfall.

Includes:

- World War II Momi Battery, Lomanwai Village, Biausevu Waterfall
- Experienced driver/guide • Air-conditioned vehicle
- Lunch at Bedarra Beach Resort
- Return transfers from Nadi and Denarau accommodation

Duration: 8 hours 30 minutes

Departs: Mon to Fri from Nadi at 8:30am

| | Adult | Child 2-12 yrs |
|----------------------|---------------|----------------|
| 1 Apr 20 – 31 Mar 21 | \$151* | \$76* |

* Prices are a guide only, subject to change and availability and are in New Zealand Dollars. From prices for accommodation are per room per night for 2 people, unless otherwise specified and based on the lowest room category for travel in low season. Prices for tours and transfers are per person, unless otherwise specified. For full terms and conditions including pricing and conditions, refer to the Booking Conditions at the back of this brochure.



PLAY DIRTY QUAD BIKE TOUR

Get down and dirty as you discover Fiji's interior terrain, remote pine forests, enriching culture, natural landmarks, waterfalls, mud-baths or hot-springs on one of the most reved up, thrilling adventures of your life. There's no better way to experience the real Fiji.

Includes:

- Use of 2 seater quad bike to share
- Safety equipment
- Souvenir photo
- Local guide
- Snack pack and refreshments
- Return transfers from Nadi accommodation

Duration: 3 hours

Departs: Daily from Nadi at 9:30am, 1:30pm

| | Adult | Child 6-12 yrs |
|----------------------|----------|----------------|
| 1 Apr 20 – 31 Mar 21 | \$267**^ | \$153**^ |

^Price based on minimum 2 adults.



NADI ZIP LINE TOUR

ZipFiji is an amazing adventure with five kilometres of zip lines woven into a truly spectacular setting of incredible caves, canyons and breathtaking ocean views. Highly trained guides instruct how to use special equipment and techniques to experience 16 jaw dropping zip lines. This amazing adventure lets you fly higher, faster and longer than ever before on this world class zip line.

Includes:

- 16 zip lines
- Safety equipment
- Light refreshments
- Return transfers from Nadi accommodation

Duration: 3 hours

Departs: Daily from Nadi at 9am, 2pm

Other Tour Options:

Pacific Harbour Zip Line **\$176*** per adult/child.

| | Adult/Child |
|----------------------|---------------|
| 1 Apr 20 – 31 Mar 21 | |
| From Nadi | \$176* |
| From Tambua Sands | \$190* |



PJ'S FISHING CHARTERS

Equipped with modern electronics and quality fishing gear, the friendly crew have local knowledge of some of the best fishing spots in Fiji. Fish for mahi mahi, wahoo and Spanish mackerels in the shallow depths or fish the edges of the reef for yellow fin, tuna and marlin.

Includes:

- Use of fishing equipment
- Bait
- Purpose built vessel with on board facilities
- Bottled water and snacks
- Maximum 6 passengers

Duration: 4 hours

Departs: Daily from Port Denarau at 8am

Private charter prices also available.

| | Adult |
|----------------------|-----------------|
| 1 Apr 20 – 31 Mar 21 | |
| Shared Charter | \$268**^ |

^Price based on shared charter, minimum 2 adults.



FIJI CULTURE DAY TOUR ON ROBINSON CRUSOE ISLAND

Experience Fijian cultural traditions in a pristine island setting. Located just a couple of kilometres from the mainland but accessed via a 30 minute river cruise. Enjoy a day of outer reef snorkelling, medicine plant bush walks and Kokoda making with a coconut demonstration. A Fijian meke is performed during the lovo buffet lunch.

Includes:

- South Pacific Island Dance Show
- Cultural activities • Snorkelling trip
- 2 hour drinks package including wine, local beers and soft drinks • Island lovo feast lunch
- Return transfers from Nadi and Coral Coast accommodation

Duration: 6 hours 30 minutes

Departs: Tue, Thu, Sun from Robinson Crusoe Jetty, Coral Coast at 10am

| | Adult | Child 5-14 yrs |
|----------------------|---------------|----------------|
| 1 Apr 20 – 31 Mar 21 | \$157* | \$67* |



SUNSET CRUISE, DINNER & SHOW ON ROBINSON CRUSOE ISLAND

Learn about Pacific Island historical cultural traditions showcased in an exhilarating island performance – Legends of the Pacific. A truly captivating experience that is not to be missed.

Includes:

- 30 minute river cruise
- Kava ceremony
- Live music & Island bonfire
- Island lovo buffet dinner
- Legends of the Pacific Show
- Return transfers from Nadi and Coral Coast accommodation

Duration: 4 hours 45 minutes

Departs: Mon, Wed, Sat from Robinson Crusoe Jetty at 5pm

| | Adult | Child 5-14 yrs |
|----------------------|---------------|----------------|
| 1 Apr 20 – 31 Mar 21 | \$178* | \$67* |



DAY & NIGHT COMBO TOUR

Experience all of Fiji in one day! The combo is the most popular tour option as it allows visitors to experience the islands amazing cultural activities along with the spectacular night show.

Includes:

- 30 minute river cruise
- Village tour and mud crab catching
- Barbecue lunch
- Kava ceremony
- Live music and Island bonfire
- Island lovo buffet dinner
- Legends of the Pacific show
- Return coach transfers from Nadi and Coral Coast accommodation

Duration: 11 hours

Departs: Mon, Wed, Sat from Robinson Crusoe Jetty at 10am

| | Adult | Child 5-14 yrs |
|----------------------|---------------|----------------|
| 1 Apr 20 – 31 Mar 21 | \$225* | \$67* |

*Prices are a guide only, subject to change and availability and are in New Zealand Dollars. From prices for accommodation are per room per night for 2 people, unless otherwise specified and based on the lowest room category for travel in low season. Prices for tours and transfers are per person, unless otherwise specified. For full terms and conditions including pricing and conditions, refer to the Booking Conditions at the back of this brochure.



MALAMALA – BEACH CLUB FIJI

Surrounded by crystal clear waters, Malamala Beach Club Fiji boasts white sand beaches, beachside cabanas with butler service, a resort-style infinity edge pool and views across the stunning Mamanuca Islands. Only 25 minutes from Port Denarau by high-speed catamaran, guests are invited to sit back and relax in the club-like atmosphere with laid-back tunes, award winning food and a specially curated cocktail menu. Explore the islands turquoise waters, snorkel the surrounding reef, dive off the end of the jetty or choose from a range of free non-motorised watersports equipment. Hire a beachside cabana or reserve one of the poolside daybeds for the ultimate experience.

The Full Day Pass includes access to the island, return boat transfers with coach connections from most Nadi, Denarau and Coral Coast hotels and resorts. Discounted rates are available to guests who return within 7 days of their initial visit.

Includes:

- Free use of towels
- Free Wi-Fi
- Free use of non-motorised watersports
- Return launch transfers from Denarau Marina
- Return coach transfers from Nadi, Denarau and Coral Coast accommodation

Duration: 6 – 7 hours

Departs: Daily from Denarau Marina at 10am, Coral Coast from 7:25am

Other Tour Options:

Day Pass with Cabana from Nadi, Denarau and Coral Coast **\$163*** per adult/child. Day Pass Returnee and Day Pass with Cabana Returnee also available. Ask your travel agent for details.

| | |
|--|--------------------|
| 1 Apr 20 – 31 Mar 21 | Adult/Child |
| From Nadi, Denarau & Coral Coast | \$129* |
| From Nadi & Denarau with poolside daybed | \$149* |



SOUTH SEA ISLAND DAY CRUISE

Discover Fiji's most popular day cruise destination. Explore the crystal clear waters teeming with magnificent coral and fish life surrounding this pretty island, just 30 minutes from Denarau Marina.

Includes:

- Full day on South Sea Island
- Use of non-motorised watersports
- Barbecue lunch
- Unlimited beer, wine and soft drinks on the island
- Return launch transfers
- Return transfers from selected Nadi, Denarau and most Coral Coast accommodation

Duration: 9 hours

Departs: Daily from Denarau Marina at 9am, Coral Coast accommodation from 7:25am

Half day cruise prices also available.

| | | |
|----------------------|---------------|-----------------------|
| | Adult | Child 5-12 yrs |
| 1 Apr 20 – 31 Mar 21 | \$172* | \$88* |



CASTAWAY ISLAND DAY CRUISE

Castaway is one of Fiji's most beautiful island resorts and has an amazing 'Fijian family' friendliness.

The island is home to a fantastic range of activities. Resort facilities include a freshwater swimming pool, three bars, resort boutique, island massage and a range of motorised watersports (extra charge).

Includes:

- 5 hours on Castaway Island
- Use of snorkelling equipment
- Choice of 2 course à la carte or buffet lunch
- Return transfers from selected Nadi and Denarau accommodation

Duration: 9 hours

Departs: Daily from Denarau Marina at 9am

| | | |
|----------------------|---------------|-----------------------|
| | Adult | Child 5-15 yrs |
| 1 Apr 20 – 31 Mar 21 | \$213* | \$152* |



SNORKELLING WITH SHARKS

This is the ultimate encounter with ocean predators in their home environment. Cruise through the stunning Mamanuca and Yasawa Islands, to Kuata Island. On arrival, board the boat with a guide for a short journey to the reef to snorkel with white and black-tipped reef sharks. It's just crystal clear water between you and them.

Includes:

- Use of facilities at Barefoot Kuata Resort
- All snorkelling equipment
- Expert guide
- Morning and afternoon tea
- 2 course lunch
- Return launch transfers
- Return transfers from Nadi and Denarau accommodation

Duration: 9 hours 15 minutes

Departs: Daily from Denarau Marina at 8:30am

| | | |
|----------------------|---------------|-----------------------|
| | Adult | Child 5-12 yrs |
| 1 Apr 20 – 31 Mar 21 | \$253* | \$152* |

* Prices are a guide only, subject to change and availability and are in New Zealand Dollars. From prices for accommodation are per room per night for 2 people, unless otherwise specified and based on the lowest room category for travel in low season. Prices for tours and transfers are per person, unless otherwise specified. For full terms and conditions including pricing and conditions, refer to the Booking Conditions at the back of this brochure.



TIVUA ISLAND DAY CRUISE

Set sail to Tivua Island for a day of adventure aboard Fiji One or Ra Marama, a historic Brigantine rig tall ship. Explore coral gardens, enjoy a guided snorkelling tour or glass bottom boat tour.

Includes:

- Cruise to Tivua Island
- Kava ceremony
- Use of canoes and stand-up paddle boards
- PADI diving (extra charge)
- Morning and afternoon tea
- Barbecue lunch
- Beer, wine and soft drink while on the island
- Return transfers from selected Nadi and Denarau accommodation

Duration: 7 hours

Departs: Daily from Denarau Marina at 10am
Fri to Wed at 11:30am

| | Adult | Child 3-15 yrs |
|----------------------|---------------|----------------|
| 1 Apr 20 – 31 Mar 21 | \$178* | \$104* |



SUNSET DINNER CRUISE

Cruise on board 'Fiji One' into a beautiful Pacific Island sunset. Enjoy a delicious barbecue dinner of fish, steak and chicken served with salads and followed by dessert. Fijian cultural entertainment and spectacular scenery round off a perfect evening on the water.

Includes:

- Fijian cultural entertainment
- Welcome drink
- Tropical buffet dinner
- Return transfers from Nadi and Denarau accommodation

Duration: 3 hours

Departs: From Denarau Marina,
Tue to Sun at 5pm (Feb – Oct),
Tue to Sun at 5:30pm (Nov – Jan)

| | Adult | Child 3-15 yrs |
|----------------------|---------------|----------------|
| 1 Apr 20 – 31 Mar 21 | \$131* | \$74* |



WHALE'S TALE DAY CRUISE

Escape to a private and exclusive uninhabited island paradise on a full day sailing cruise. Cruise through the spectacular Blue Lagoon and nearby Mamanuca Islands and witness the amazing scenery. Relax with a massage (extra charge), play some beach volleyball and feast on a gourmet buffet lunch.

Includes:

- Use of snorkelling equipment
- Champagne light breakfast
- Buffet lunch
- Beer, wine and soft drinks

Duration: 7 hours

Departs: Daily from Denarau Marina at 10am

| | Adult | Child 2-11 yrs |
|----------------------|---------------|----------------|
| 1 Apr 20 – 31 Mar 21 | \$175* | \$129* |



Artist's Impression



SOUTH SEA SAILING

Introducing Fiji's newest sailing experience, launching in July 2020. This unique 78 foot sailing catamaran, the first of its kind in the Southern Hemisphere, will have large shaded seating options, including day beds and bean bags, and will take up to 80 passengers daily. Visit uninhabited sand cays and untouched coral reefs abundant with marine life. Each journey through the beautiful Mamanuca Islands will depend on the warm tropical breeze and sea conditions, creating a unique sailing experience every day. The gourmet buffet lunch complimented by signature cocktails, beers and premium wines accompany Fiji's newest day trip offering.

Includes:

- Cruise the Mamanuca Islands on board a unique sailing catamaran
- Gourmet buffet lunch with beer and wine
- Unlimited non-alcoholic beverages
- Use of snorkelling equipment
- Free Wi-Fi (depending on location)
- Return coach transfers from Nadi, Denarau and Coral Coast accommodation

Duration: 7 hours

Departs: Daily from Denarau Marina at 9:45am

Dinner Cruise prices also available.

| | Adult | Child 5-12 yrs |
|----------------------|---------------|----------------|
| 1 Jul 20 – 31 Mar 21 | \$188* | \$115* |



CLOUD 9 DAY TRIP

Cloud 9 is Fiji's only two level floating platform with an internationally stocked bar and Italian wood-fired pizzeria, surrounded by turquoise blue water and picturesque views. This unique venue features a surround sound system throughout, sun decks and day beds. The music does not focus on the mainstream, it is here to create a relaxed atmosphere while you are embracing the seascape.

Includes:

- FJD60 food and beverage credit
- Return boat transfer from Denarau Marina to Cloud 9
- Return transfers from Denarau & Nadi hotels, DoubleTree by Hilton Sonaisali

Duration: 5 hours 30 minutes (9:15am departure)
4 hours 45 minutes (1:15pm departure)

Departs: Daily from Denarau Marina at 9:15am,
1:15pm

Not suitable for children under 7 yrs.

| | Adult | Child 7-12 yrs |
|----------------------|---------------|----------------|
| 1 Apr 20 – 31 Mar 21 | \$169* | \$152* |

TOURS



SIGATOKA RIVER SAFARI

Experience the natural beauty of the Sigatoka River on this uniquely Fijian adventure. On board a custom built safari jet boat, travel to authentic Fijian villages and experience a day in the life of the real 'kaiviti' (Fijian) and participate in a traditional kava ceremony.

Includes:

- 4 hour 30 minute safari jet boat cruise
- Kava ceremony • Safari sulu (sarong) for women
- Tropical Fijian lunch
- Return transfers from selected Coral Coast accommodation

Duration: 4 hours 45 minutes

Departs: Mon to Sat from Sigatoka Town at 8:45am, 1pm

Other Tour Options:

Tour from Nadi/Denarau **\$252*** per adult, **\$127*** per child, Self Drive **\$211*** per adult, **\$106*** per child.

| | Adult | Child 4-15 yrs |
|----------------------|---------------|----------------|
| 1 Apr 20 – 31 Mar 21 | \$237* | \$119* |



OFF-ROAD CAVE SAFARI

This journey of discovery, rich in history, shows first-hand Fiji's largest cave system, the Naihehe Cave. The guide will share the rich history of the region and the sacred caves.

Includes:

- 4 hour 30 minute off-road cave tour
- ATV vehicle • Naihehe Cave tour and contribution
- Safari sulu (sarong) for women • Barbecue lunch
- Kava ceremony • Return transfers from selected Coral Coast accommodation

Duration: 4 hours 45 minutes

Departs: Mon to Sat from Sigatoka Town at 8:45am, 1pm

Other Tour Options:

Tour from Nadi/Denarau **\$226*** per adult, **\$113*** per child. Self Drive **\$191*** per adult, **\$96*** per child.

Family prices also available.

| | Adult | Child 4-15 yrs |
|----------------------|---------------|----------------|
| 1 Apr 20 – 31 Mar 21 | \$211* | \$106* |



KULA WILD ADVENTURE PARK

Kula WILD Adventure Park on Fiji's Coral Coast is the biggest family fun park in Fiji. Get up close and personal with iguanas, snakes and more!

A kilometre of walkways weaves through acres of tropical forest. See parrots, lorries, fruit bats and more in the walkthrough habitats. Kids will enjoy the splash pool while mum and dad relax at the Splash Café. With a 110 metre long 'Kula Splash Mountain Jungle Water Slide' and 'Kula Canopy Flier Roller Coaster Zip Rail', there is something for everyone to enjoy. Bring a camera and help hand feed the sea turtles.

Open: 10am – 4:30pm (last entry 3:30pm) daily

Other Tour Options:

Behind the Scenes Private Tour **\$61*** per adult.

Family prices also available.

| | Adult | Child 3-11 yrs |
|-----------------------|--------------|---------------------------|
| 1 Apr 20 – 31 Mar 21 | | |
| General Entry | \$36* | \$18* |
| Park Ranger For a Day | N/A | \$126*[^] |

[^]Suitable for children 6-12 yrs.



NATADOLA BAY CHAMPIONSHIP GOLF COURSE

Natadola Bay blends world class golf architecture with dramatic landscapes from rolling pastures through to absolute beachfront. The Vijay Singh designed course measures 6583 metres from the black tees ensuring a tough test for those looking to take on the challenge. However, by offering four teeing grounds on all holes, Natadola Bay caters to golfers of all levels. Natadola Bay also offers a bar and restaurant with stunning views across the course to the Pacific Ocean and coral reefs.

Includes:

- 18 holes of golf
- Shared golf cart
- Use of driving range
- 6 tees per cart

Open: 7am – sunset

Pre-booking is highly recommended during busy times.

| | Adult |
|----------------------|---------------|
| 1 Apr 20 – 31 Mar 21 | \$184* |



YANUCA ISLAND DAY TRIP

Join the crew that will lead you to the untapped beautiful island of Yanuca. The island is situated approximately 15 kilometres from the mainland and crosses over the Beqa Passage. Throw in a line and try a spot of fishing or just sit back and relax, listening to music while taking in the spectacular views from the sundeck of the luxury high speed catamaran. The island lies on the south western side of Beqa Lagoon. Fall in love with unmatched pristine waters and white sandy beaches.

Includes:

- Use of snorkelling equipment
- Kava ceremony
- Island activities
- Lunch

Duration: 7 hours

Departs: Tue, Fri from The Pearl Resort & Spa, Pacific Harbour at 9am

| | Adult | Child 2-11 yrs |
|----------------------|---------------|----------------|
| 1 Apr 20 – 31 Mar 21 | \$149* | \$75* |



SNORKELLING EXCURSION

View the amazing array of tropical fish and coral of Beqa Lagoon on this two hour snorkelling excursion. You can be sure your encounter will be full of life and colour. Fiji's tropical clear waters make it an underwater wonderland with visibility reaching 30 metres. Fins, mask and snorkels are provided for your adventure and the crew is dedicated to make your experience a memorable one.

Includes:

- All snorkelling equipment
- Expert guide
- Fish feeding
- Light snacks and refreshments

Duration: 2 hours

Departs: Mon, Wed, Thu, Sat from The Pearl South Pacific Jetty at 9am

| | Adult | Child 2-11 yrs |
|----------------------|--------------|----------------|
| 1 Apr 20 – 31 Mar 21 | \$65* | \$33* |

* Prices are a guide only, subject to change and availability and are in New Zealand Dollars. From prices for accommodation are per room per night for 2 people, unless otherwise specified and based on the lowest room category for travel in low season. Prices for tours and transfers are per person, unless otherwise specified. For full terms and conditions including pricing and conditions, refer to the Booking Conditions at the back of this brochure.



Nadi

NADI & SURROUNDS

Nadi is the gateway to the spectacular island and coastal regions of Fiji. Visit local shops and markets or Fiji's second largest city, Lautoka.

SEE

- Visit the Sri Siva Subramaniya Temple in Nadi Town
- See the impressive orchid collection at the Garden of the Sleeping Giant

DO

- Browse the local markets, including the Nadi Produce and Handicraft Markets
- Indulge in a therapeutic thermal mud spa at the Sabeto Thermal Mud Pool and Hot Springs

EAT & DRINK

- Sample Indo-Fijian food at one of Nadi's curry houses

WHAT'S ON

Sunny West Bowling Carnival, Nadi

14 May

Bula Festival

11 to 18 July

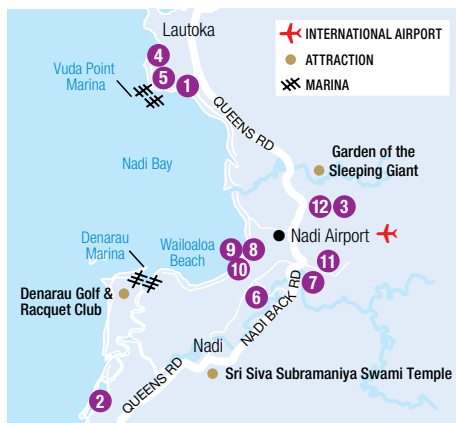
Sugar Festival, Lautoka

September (dates to be confirmed)

FNU International Food Festival, Nadi

October (dates to be confirmed)

| REF. | HOTELS | PAGE |
|------|--|------|
| 1 | Anchorage Beach Resort ◆◆◆ | 34 |
| 2 | DoubleTree Resort by Hilton Fiji ◆◆◆◆ | 35 |
| 3 | Fiji Gateway Hotel ◆◆◆◇ | 31 |
| 4 | Fiji Hideaway Resort & Spa, Vuda ◆◆◆◆ | 35 |
| 5 | First Landing Beach Resort ◆◆◆ | 34 |
| 5 | First Landing Resort Villas & Apartments ◆◆◆ | 34 |
| 6 | Mercure Nadi ◆◆◆◇ | 33 |
| 7 | Novotel Nadi ◆◆◆◆ | 32 |
| 8 | Pullman Nadi Bay Resort & Spa ◆◆◆◆◆ | 33 |
| 9 | Ramada Suites Wailoala Beach Fiji ◆◆◆◆◆ | 34 |
| 10 | Smugglers Cove Beach Resort & Hotel ◆◆◆◆◇ | 33 |
| 11 | Tanoa International Hotel ◆◆◆◆ | 32 |
| 12 | Tokatoka Resort Nadi ◆◆◆ | 31 |



TOKATOKA RESORT NADI ◆◆◆



Studio

Queens Road, Nadi Airport (NAN)

MAP PAGE 31 REF. 12

From **\$226***

- ❖ 24 hour reception perfect for late flight arrivals
- ❖ Large resort pool includes a children's waterslide
- ❖ All rooms feature balconies or patio

Includes light breakfast daily.

Location: Opposite Nadi International Airport and surrounded by tropical gardens. Distances: Nadi Airport 500m, Beach 8.4km.

Getting There: Free return transfers from Nadi Airport.

Property Features: Pool, Spa, Restaurant, Bar, 24 hour room service, Tokatoka spa (day spa), Children's playground, Waterslide, Exercise equipment, Guest laundry, Nightly entertainment, Parking (free), 108 rooms.

Room Features: Air-conditioning, Balcony or patio, Tea/coffee making facilities, Kitchen (1 Bedroom Villa), Cable TV, Ironing facilities, Safe.

Max Capacity: Studio/Family Villa/1 Bedroom Villa – 3, Suite – 2.

FIJI GATEWAY HOTEL ◆◆◆◇



Queens Road, Nadi Airport (NAN)

MAP PAGE 31 REF. 3

From **\$172***

- ❖ Iconic hotel located opposite the airport
- ❖ Two pools and a tennis court with free use of racquets and balls
- ❖ Palm Court Restaurant open for breakfast, lunch and dinner

Location: Situated opposite Nadi International Airport and eight kilometres from Nadi Town. Distances: Nadi Airport 500m, Beach 8km.

Getting There: Free return transfers from Nadi Airport.

Property Features: Free Wi-Fi (common areas), Pools (2), Spa, Restaurant, Café, Bar, 24 hour room service, Tennis court, Waterslide, Resort shop, Parking (free), 95 rooms.

Room Features: Wi-Fi (extra charge), Air-conditioning, Tea/coffee making facilities, In-room movies (free), Cable TV, Hair dryer.

Max Capacity: Deluxe/Poolside – 4, Deluxe Family – 4 adults/1 child, Suite – 2.



*Prices are a guide only, subject to change and availability and are in New Zealand Dollars. From prices for accommodation are per room per night for 2 people, unless otherwise specified and based on the lowest room category for travel in low season. Prices for tours and transfers are per person, unless otherwise specified. For full terms and conditions including pricing and conditions, refer to the Booking Conditions at the back of this brochure.

NADI AIRPORT HOTELS

NOVOTEL NADI



Superior

Namaka Hill, Nadi Airport (NAN)
MAP PAGE 31 REF. 7

From **\$177***

- ❖ Set in 42 acres of tropical gardens
- ❖ Nine hole par three golf course on-site
- ❖ All rooms feature a private balcony or patio overlooking the golf course

Location: Located close to Nadi Airport and a 15 minute drive to Port Denarau.
Distances: Nadi Airport 2km, Beach 5km.

Getting There: Free return transfers from Nadi Airport.

Property Features: Wi-Fi (common areas – extra charge), Pool, Golf course (9 hole), Restaurant, Bar, Gym, Massage service, Tennis court, 24 hour reception, Parking (free), 127 rooms.

Room Features: Wi-Fi (extra charge), Air-conditioning, Balcony or patio, Tea/coffee making facilities, Hair dryer, All rooms non smoking.

Max Capacity: Superior/Executive – 3, Deluxe – 4, Deluxe Family – 5.



TANOA INTERNATIONAL HOTEL



Superior

Votualevu Road, Nadi Airport (NAN)
MAP PAGE 31 REF. 11

From **\$225***

- ❖ Five dining options including the 24 hour Garden Court Restaurant
 - ❖ Two floodlit tennis courts
 - ❖ Nightly entertainment in the Bula Bar
- Includes full breakfast daily.**

Location: Located three minutes from Nadi International Airport and a 15 minute drive to Nadi's main shopping centre. Distances: Nadi Airport 3km, Beach 15km.

Getting There: Free return transfers from Nadi Airport.

Property Features: Pool, Spa, Restaurants (3), Bar, Sauna, Gym, Tennis court (floodlit), Resort shop, Guest laundry, 24 hour reception, Parking (free), 148 rooms.

Room Features: Air-conditioning, Balcony or patio, Tea/coffee making facilities, Ironing facilities, Hair dryer, Safe.

Max Capacity: Superior – 3 adults or 2 adults/2 children, Executive – 3, Suite – 2.



* Prices are a guide only, subject to change and availability and are in New Zealand Dollars. From prices for accommodation are per room per night for 2 people, unless otherwise specified and based on the lowest room category for travel in low season. Prices for tours and transfers are per person, unless otherwise specified. For full terms and conditions including pricing and conditions, refer to the Booking Conditions at the back of this brochure.

MERCURE NADI



Standard

Queens Road, Nadi (NAN)
MAP PAGE 31 REF. 6

From **\$149***

- ❖ Rooms feature private balconies that overlook the pool or tropical gardens
- ❖ Kids will love the outdoor playground area
- ❖ Al fresco dining at Rokete Restaurant

Location: Only minutes from Nadi Airport, Nadi Town Centre and Port Denarau. It is in the perfect spot to see the sights and indulge in some shopping on your Fiji holiday. Distances: Nadi Airport 5km, Beach 2km.

Getting There: Free return transfers from Nadi Airport.

Property Features: Wi-Fi (common areas – extra charge), Pool, Restaurant, Bar, Room service, Day spa, Tennis court, Children's playground, Resort shop, Laundry/dry cleaning service, Non smoking, Parking (free), 85 rooms.

Room Features: Wi-Fi (extra charge), Air-conditioning, Balcony, Tea/coffee making facilities, Ironing facilities.

Max Capacity: Standard/Deluxe King – 3, Deluxe Twin – 3 adults or 2 adults/2 children.



SMUGGLERS COVE BEACH RESORT & HOTEL



Wailoaloa Beach Road, Nadi Bay (NAN)
MAP PAGE 31 REF. 10

From **\$176***

- ❖ 24 hour airport meet and greet available
- ❖ Stunning sunsets from the beachfront dining area
- ❖ Nightly entertainment includes cultural performances

Location: Situated on Wailoaloa Beach overlooking Nadi Bay, the resort is a 15 minute drive from Nadi International Airport, Nadi Town and Port Denarau Marina. Distances: Beachfront, Nadi Airport 9km.

Getting There: Free one way transfer from Nadi Airport.

Property Features: Free Wi-Fi (common areas), Pool, Restaurants (3), Bar, Café, Room service, Day spa, Evening entertainment, Use of kayaks (free), Surf shop, PADI dive shop, Guest laundry, 24 hour reception, Parking (free), 40 rooms.

Room Features: Wi-Fi (extra charge), Air-conditioning, Balcony (Oceanfront Balcony), Fan, Tea/coffee making facilities, Cable TV, Ironing facilities, Hair dryer, Safe.

Max Capacity: Deluxe Premium – 3, Oceanfront Balcony – 2, Family Suite/Deluxe Family Suite – 5.

PULLMAN NADI BAY RESORT & SPA



Superior Garden View

Wailoaloa Beach, Nadi Bay (NAN)
MAP PAGE 31 REF. 8

From **\$349***

- ❖ New five star resort that opened in April 2019
 - ❖ Beachfront resort
 - ❖ Perfect for families with kid's club, children's pool and playground
- Includes full breakfast daily.**

Location: Located on Wailoaloa Bay, seven kilometres from the airport and a 15 minute drive from Port Denarau and Port Denarau Marina. Distances: Beachfront, Nadi 10km.

Getting There: We recommend transfers be booked in conjunction with your accommodation. See page 17 for details.

Property Features: Free Wi-Fi (lobby), Wedding chapel, Pools (3, 1 – children's), Spa, Restaurants (4), Bars (3), Room service, Kid's club 3 – 15 years (extra charge), Day spa, Gym, Tennis courts (2), 24 hour reception, 236 rooms.

Room Features: Wi-Fi (extra charge), Ocean views, Air-conditioning, Balcony or patio, Tea/coffee making facilities, Mini bar, Cable TV, In-room movies (pay to view), Safe.

Max Capacity: Superior Garden View/Deluxe Pool View – 2 adults/2 children.



*Prices are a guide only, subject to change and availability and are in New Zealand Dollars. From prices for accommodation are per room per night for 2 people, unless otherwise specified and based on the lowest room category for travel in low season. Prices for tours and transfers are per person, unless otherwise specified. For full terms and conditions including pricing and conditions, refer to the Booking Conditions at the back of this brochure.

NADI & SURROUNDS HOTELS

RAMADA SUITES WAILOALOA BEACH FIJI



King Studio Suite

Wailoaloa Beach, Nadi Bay (NAN)
MAP PAGE 31 REF. 9

From **\$349***

- ❖ Absolute beachfront property
- ❖ Great for families with all rooms having limited cooking facilities
- ❖ Stunning views from rooftop restaurant

Location: Centrally located between Nadi International Airport and Nadi town and a 10 minute drive from Denarau Island. Distances: Beachfront, Nadi Airport 9km.

Getting There: Free return transfers from Nadi Airport.

Property Features: Pools (2 – 1 lap, 1 children's), Bar (rooftop), Bistro (rooftop), Restaurant, Room Service, Beach deck dining, Senikai Day spa, Gym, Lift, Children's playground, Parking (free), 40 rooms.

Room Features: Air-conditioning, Ocean view, Balcony, Kitchen, Laundry facilities, Cable TV, Safe, All rooms non smoking.

Max Capacity: King Studio Suite – 2, 1 Bedroom Beachfront Suite – 4, 2 Bedroom Beachfront Suite/2 Bedroom Ocean View Suite – 6.



FREE

ANCHORAGE BEACH RESORT



Vuda Point, via Lautoka (WJ)
MAP PAGE 31 REF. 1

From **\$180***

- ❖ Two pools including a hilltop infinity edge pool with ocean views
 - ❖ Great for families with two hours of free babysitting each evening
 - ❖ Fresh seafood menu served at the open-air restaurant
- Includes light breakfast daily.**

Location: Located on a secluded beach and a 15 minute drive from Nadi International Airport and 10 minutes from Lautoka. Distances: Beachfront, Nadi Airport 15km.

Getting There: We recommend airport transfers be booked in conjunction with your accommodation. See page 17 for further details.

Property Features: Free Wi-Fi (common areas), Pools (2 – 1 lagoon, 1 infinity edge), Spa, Restaurant, Bar, Senibua Massage Bure (day spa), Parking (free), 50 rooms.

Room Features: Ocean views (except Mountain View Spa), Air-conditioning, Balcony with spa, Tea/coffee making facilities, Hair dryer, All rooms non smoking.

Max Capacity: Mountain View Spa/Oceanfront Spa/Beachside Spa – 3 adults or 2 adults/3 children.



FIRST LANDING BEACH RESORT



Garden Bure

Vuda Point, via Lautoka (FTN)
MAP PAGE 31 REF. 5

From **\$369***

- ❖ Families will love the Nalamu Nipper Kids Club and kids' meals available
- ❖ Admire spectacular sunsets as you sip cocktails at Domoni Sunset Bar
- ❖ Watch a movie under the stars at the open air cinema

Includes light breakfast daily and welcome fruit drink on arrival.

Location: Set on the white sands of Nalamu Beach at Vudu Point. Distances: Beachfront, Nadi Airport 15km.

Property Features: Free Wi-Fi (common areas), Fijian cooking classes, Pool, Restaurant, Bar, Resort shop, Day spa, Nalamu Nipper Kids Club 4-12 years (free), Use of kayaks and snorkelling equipment (free), Cultural activities, 34 rooms.

Room Features: Wi-Fi (extra charge), Air-conditioning, Fan, Balcony or terrace, Tea/coffee making facilities, Limited cooking facilities with microwave (Deluxe Garden Bure), Cable TV (Deluxe Garden Bure), Hair dryer, Safe.

Max Capacity: Garden Bure/Deluxe Garden Bure/Beachfront Spa Bure – 3 adults/1 child.



FREE NIGHTS

FIRST LANDING VILLAS & APARTMENTS



Vuda Point, via Lautoka (FTN)
MAP PAGE 31 REF. 5

From **\$674***

- ❖ Beachfront property set on a private beach
- ❖ Great for families with a kid's club and rooms with cooking facilities
- ❖ Dine at the beachfront restaurant, Mai Kana

Includes light breakfast daily and welcome fruit drink on arrival.

Location: Located on Nalamu Beach, the resort is a 20 minute drive from Nadi Airport and 35 minutes from Nadi Town. Distances: Beachfront, Nadi Airport 15km.

Property Features: Free Wi-Fi (common areas), Fijian cooking classes, Pool, Restaurant, Bar, Resort shop, Day spa, Nalamu Nipper Kids Club 4-12 years (free), Use of kayaks and snorkelling equipment (free), Cultural activities, 20 rooms.

Room Features: Wi-Fi (extra charge), Private pool (Villas), Air-conditioning, Fan, Balcony or terrace, Tea/coffee making facilities, Kitchen (Tropical 3 Bedroom, Garden Villa 2 Bedroom, Beach Villa 2 Bedroom, Royal Beachfront Villa, Nalamu Grand Beach Villa), Limited cooking facilities (Tropical 1 Bedroom, Garden Villa 1 Bedroom), Cable TV.

Max Capacity: Tropical Studio/Tropical 1 Bedroom/Garden Villa 1 Bedroom – 3 adults/1 child, Tropical 3 Bedroom – 6. Other room types also available.



FREE NIGHTS

FIJI HIDEAWAY RESORT & SPA, VUDA



Deluxe Suite

Vuda Beach (VUD)
MAP PAGE 31 REF. 4

From **\$386***

- ❖ Live unique nightly entertainment
 - ❖ Beachfront wedding chapel on-site
 - ❖ Enjoy happy hour drinks daily from the Sunset Bar
- Includes breakfast daily and welcome drink on arrival.**

Location: Set on Vuda Beach and located halfway between the townships of Nadi and Lautoka. It's a 20 minute drive from Nadi International Airport to the resort. Distances: Beachfront Nadi Airport 20km.

Getting There: Free return transfers from Nadi Airport.

Property Features: Pool, Restaurant, Bars (2), Café, 24 hour room service, Day spa, Gym, Use of non-motorised watersports, 24 hour reception, 26 rooms.

Room Features: Private plunge pool (Beachfront Bure, Beachfront Honeymoon Bure), Air-conditioning, Balcony or terrace (Bure), Tea/coffee making facilities, Bottled water, Safe.

Max Capacity: Deluxe Suite/Ocean Deluxe Suite/Beachfront Bure/Beachfront Honeymoon Bure – 2, Garden Bure – 3.



DOUBLETREE RESORT BY HILTON FIJI



Beachfront Guestroom

Naisali Island, Sonaisali (VSI)
MAP PAGE 31 REF. 2

From **\$262***

- ❖ Beachfront resort
- ❖ Family friendly resort with kid's club and children's playground
- ❖ Signature Sweet Dreams by DoubleTree bedding in all rooms

Includes full breakfast daily and 30 minutes of non-motorised water sports per day.

Location: A three minute boat ride from the main island of Viti Levu and a 25 minute drive from Nadi International Airport. Distances: Beachfront, Nadi Airport 20km.

Getting There: We recommend airport transfers be booked in conjunction with your accommodation. See page 17 for further details.

Property Features: Free Wi-Fi (common areas), Pool, Restaurants (2), Bars (3), Day Spa, 24 hour room service, Kids club 3-12 years (free), 120 rooms.

Room Features: Wi-Fi (extra charge), Air-conditioning, Balcony or terrace, Mini bar, Tea/coffee making facilities, Smart TV, Cable TV, Ironing facilities, All rooms non smoking.

Max Capacity: Beachfront Guestroom/Ocean View Bure Double King/Beachfront Bure Double King – 2 adults/2 children, Ocean View Bure King / Beachfront Bure King – 3.



*Prices are a guide only, subject to change and availability and are in New Zealand Dollars. From prices for accommodation are per room per night for 2 people, unless otherwise specified and based on the lowest room category for travel in low season. Prices for tours and transfers are per person, unless otherwise specified. For full terms and conditions including pricing and conditions, refer to the Booking Conditions at the back of this brochure.



Sofitel Fiji Resort & Spa

DENARAU ISLAND

A short drive from Nadi, Denarau Island is easily accessible with a causeway that separates the island from Viti Levu. Cruise ships sail into the picturesque harbour while tall ships whisk guests away to the nearby Mamanuca and Yasawa Islands for snorkelling, swimming and sunset cocktails.

SEE

- See colourful coral and tropical fish in the cool blue waters on a day tour to South Sea Island or Castaway Island
- Watch the vivid colours of a Fiji sunset from Denarau Beach

DO

- Play a round of golf at Denarau Golf and Racquet Club
- Take a short cruise to the floating platform Cloud 9, swim the crystal clear waters, laze on the decks and enjoy a delicious lunch
- Make a splash at the Big Bula Waterpark

EAT & DRINK

- Dine at Nadina Fijian Restaurant for local and traditional Fijian cuisine at Denarau Marina

WHAT'S ON

Fiji International Jazz & Blues Festival
May (dates to be confirmed)

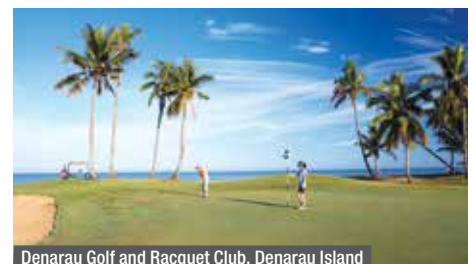
South Pacific Food and Wine Festival
October (dates to be confirmed)

Tri Fiji
14 to 18 October



Cloud 9

| REF. | APARTMENTS | PAGE |
|------|---|------|
| 1 | The Palms Denarau ◆◆◆◆◇ | 37 |
| 2 | Sheraton Denarau Villas ◆◆◆◆◆ | 37 |
| 3 | The Terraces Denarau Island ◆◆◆◆◇ | 37 |
| REF. | HOTELS | PAGE |
| 4 | Hilton Fiji Beach Resort & Spa ◆◆◆◆◆ | 38 |
| 5 | Radisson Blu Resort Fiji Denarau Island ◆◆◆◆◆ | 39 |
| 6 | Sheraton Fiji Resort ◆◆◆◆◆ | 40 |
| 7 | Sofitel Fiji Resort & Spa ◆◆◆◆◆ | 41 |
| 8 | The Westin Denarau Island Resort & Spa ◆◆◆◆◆ | 40 |



Denarau Golf and Racquet Club, Denarau Island

THE TERRACES DENARAU ISLAND



Denarau Island (RGB)
MAP PAGE 36 REF. 3

From **\$412***

- ❖ Ideal for families or couples who want the option of self catering
 - ❖ Pool includes 25 metre lap pool
 - ❖ Dine by the pool at the Terraces Café
- Includes welcome drink on arrival.**

Location: Overlooking the Denarau Golf Course, steps from Port Denarau and the restaurants and shops of Port Denarau Marina. Distances: Shops 100m, Nadi Airport 14km.

Getting There: We recommend airport transfers be booked in conjunction with your accommodation. See page 17 for further details.

Property Features: Pool, Room service, Café, Dry cleaning service, 24 hour reception, Parking (free), 30 rooms.

Room Features: Free Wi-Fi, Air-conditioning, Balcony or patio, Fan, DVD player, Kitchen with microwave and dishwasher, Washer/dryer.

Max Capacity: 1 Bedroom – 3, 2 Bedroom – 5, 3 Bedroom – 7.



THE PALMS DENARAU



Denarau Island (RGB)
MAP PAGE 36 REF. 1

From **\$317***

- ❖ Opt for an apartment for self-catering facilities
- ❖ Welcome drink on arrival
- ❖ Close to dining and shopping at Port Denarau Marina

Location: Opposite the renowned Port Denarau Marina and close to the Denarau Golf Club. The property is a 20 minute drive from Nadi International Airport. Distances: Beachfront, Nadi Airport 14km.

Getting There: We recommend airport transfers to be booked in conjunction with your accommodation. See page 17 for further details.

Property Features: Pool, Café, Gym, Lift, Parking (free), 38 rooms.

Room Features: Air-conditioning, Balcony, Tea/coffee making facilities, Kitchen with microwave and dishwasher (1, 2 and 3 Bedroom), Washer/dryer (1, 2 and 3 Bedroom), Cable TV.

Max Capacity: Guest – 2 adults/2 children, 1 Bedroom – 2, 2 Bedroom – 4, 3 Bedroom – 6.



SHERATON DENARAU VILLAS



Denarau Island (RGB)
MAP PAGE 36 REF. 2

From **\$973***

- ❖ Family friendly resort, spacious rooms with kitchen facilities
- ❖ Access the facilities of Sheraton Fiji and Westin Denarau Island Resort and Spa
- ❖ Two pools including a lagoon and an infinity pool

Location: Beachfront resort adjacent to the Denarau Golf Club and close to the Port Denarau Marina. Distances: Beachfront, Nadi Airport 14km.

Getting There: We recommend airport transfers be booked in conjunction with your accommodation. See page 17 for further details.

Property Features: Golf course (18 hole), Pools (2), Restaurant, Bars (2), Café, 24 hour room service, Kids club 4-12 years (extra charge), Tennis court, 24 hour reception, 297 rooms.

Room Features: Air-conditioning, Balcony or patio, Fan, Kitchen with microwave and dishwasher, Cable TV, Bathrobes, Laundry.

Max Capacity: 2 Bedroom Garden Villa/2 Bedroom Lagoon View Villa – 5 adults/2 children. Other room types also available.



*Prices are a guide only, subject to change and availability and are in New Zealand Dollars. From prices for accommodation are per room per night for 2 people, unless otherwise specified and based on the lowest room category for travel in low season. Prices for tours and transfers are per person, unless otherwise specified. For full terms and conditions including pricing and conditions, refer to the Booking Conditions at the back of this brochure.

DENARAU ISLAND HOTELS

HILTON FIJI BEACH RESORT & SPA



Denarau Island (RGB)
MAP PAGE 36 REF. 4

From **\$434***

- ❖ Beachfront resort
- ❖ Kids will love the Ika Kids Club
- ❖ Seven outdoor pools
- ❖ Indulge in a treatment at the acclaimed day spa
- ❖ Koro is the exclusive adults only area featuring two beachfront pools, a pool bar, all day dining and live entertainment

Includes full breakfast daily and 30 minutes of non-motorised watersports per day.

Location: Located on 2.5 kilometres of beach on Denarau Island. The resort is a 10 minute drive from the centre of Nadi and a 20 minute drive from Nadi Airport. Distances: Beachfront, Nadi Airport 14km.

Getting There: We recommend airport transfers be booked in conjunction with your accommodation. See page 17 for further details.

Property Features: Free Wi-Fi (common areas), Pools (7 – including adults only and family zones), Restaurants (3), Bar, KORO (adults only area – free), 24 hour room service, Kids club 3-12 years (free), Day spa, Gym, Parking (free), 329 rooms.

Room Features: Wi-Fi (extra charge), Air-conditioning, Fan, Balcony, Limited cooking facilities (except Studio), Barbecue (except Studio), Cable TV, DVD player, Washer/dryer (except Studio).

Max Capacity: Beachfront Guestroom – 2, Garden View Guestroom/1 Bedroom Garden View/1 Bedroom Beachfront – 3, 2 Bedroom Beachfront/2 Bedroom Penthouse – 5, 3 Bedroom Penthouse – 7.



Garden View Guestroom



*Prices are a guide only, subject to change and availability and are in New Zealand Dollars. For prices for accommodation are per room per night for 2 people, unless otherwise specified and based on the lowest room category for travel in low season. Prices for tours and transfers are per person, unless otherwise specified. For full terms and conditions including pricing and conditions, refer to the Booking Conditions at the back of this brochure.

RADISSON BLU RESORT FIJI DENARAU ISLAND



Denarau Island (RGB)
MAP PAGE 36 REF. 5

From **\$681***

- ❖ Great resort for families with a kids club and suites with cooking facilities
- ❖ Beachfront resort with a private beach and a Waterfall Lawn
- ❖ Two Bedroom Suites include free access to the kids club
- ❖ Four climate controlled lagoon pools including an adults only pool
- ❖ Enjoy a meal at one of the six restaurants
- ❖ Newly renovated guest rooms and suites completed in February 2019

Includes breakfast daily.

Location: On Fiji's largest resort island and boasting upscale beachfront accommodation just 25 minutes from Nadi International Airport. Head to the nearby Denarau Marina for some shopping or take a cruise to one of the nearby islands. Distances: Beachfront, Nadi Airport 16km.

Getting There: We recommend airport transfers be booked in conjunction with your accommodation. See page 17 for further details.

Property Features: Pools (4 – including adults only), Restaurants (4), Bars (3 – 1 swim-up), 24 hour room service, Harmony Retreat Spa (day spa), Kids club 4-12 years (extra charge), Waterslide, Use of selected non-motorised watersports (free), Convenience store, 268 rooms.

Room Features: Air-conditioning, Fan, Balcony or courtyard, Tea/coffee making facilities, Limited cooking facilities with microwave and dishwasher (1 and 2 Bedroom Suites), Ironing facilities, Washer/dryer (1 and 2 Bedroom Suites), Hair dryer, Safe.

Max Capacity: Garden View/Lagoon View – 2 adults/1 child, Deluxe Courtyard – 3 adults or 2 adults/2 children, Garden View 1 Bedroom Suite/Lagoon View 1 Bedroom Suite/1 Bedroom Courtyard Suite – 4, Garden View 2 Bedroom Suite/Lagoon View 2 Bedroom Suite/2 Bedroom Courtyard Suite – 6.



Lagoon View



Garden View



*Prices are a guide only, subject to change and availability and are in New Zealand Dollars. From prices for accommodation are per room per night for 2 people, unless otherwise specified and based on the lowest room category for travel in low season. Prices for tours and transfers are per person, unless otherwise specified. For full terms and conditions including pricing and conditions, refer to the Booking Conditions at the back of this brochure.

DENARAU ISLAND HOTELS

SHERATON FIJI RESORT



Ocean Breeze

Denarau Island (RGB)
MAP PAGE 36 REF. 6

From **\$400***

- ❖ Great for families with a kid's club, playground and interconnecting rooms
- ❖ Access to facilities at Sheraton Villas and The Westin
- ❖ Enjoy special privileges at Denarau Golf & Racquet Club

Location: Beachfront on Denarau Island and within walking distance of the Big Bula Waterpark and Denarau golf course. Distances: Beachfront, Nadi Airport 14km.

Getting There: We recommend airport transfers be booked in conjunction with your accommodation. See page 17 for further details.

Property Features: Golf course (18 hole), Pool, Restaurants (4), Bars (2), 24 hour room service, Kids club 4-12 years (extra charge), Day spa, Tennis court, 24 hour reception, Parking (extra charge), 296 rooms.

Room Features: Air-conditioning, Fan, Balcony/patio, Tea/coffee making facilities, Cable TV, Bathrobes, Ironing facilities, Hair dryer, Safe.

Max Capacity: Ocean Breeze/Ocean View/Ocean Front/Ocean Studio – 3 adults or 2 adults/2 children, Presidential Suite – 2.



THE WESTIN DENARAU ISLAND RESORT & SPA



Ocean Breeze

Denarau Island (RGB)
MAP PAGE 36 REF. 8

From **\$400***

- ❖ Kids will love the activities at LaiLai Kids Club at Sheraton Fiji Resort
- ❖ Separate adults only accommodation wing and lap pool
- ❖ Access to the facilities at neighbouring Sheraton properties

Location: This beachfront property is a 10 minute walk from the Port Denarau Marina. Distances: Beachfront, Nadi Airport 14km.

Getting There: We recommend airport transfers be booked in conjunction with your accommodation. See page 17 for further details.

Property Features: Golf course (18 hole), Pools (2), Spa, Restaurants (3), Bars (2), 24 hour room service, LaiLai Kids Club 4-12 years (extra charge), Heavenly Spa by Westin (day spa), Gym, 24 hour reception, 246 rooms.

Room Features: Air-conditioning, Balcony or patio, Fan, Cable TV, In-room movies (pay to view), Bathrobes, Hair dryer, Safe.

Max Capacity: Ocean Breeze/Ocean View/Ocean Front – 3 adults or 2 adults/2 children, Ocean Front Suite/Royal Suite/Regent Suite – 3.



* Prices are a guide only, subject to change and availability and are in New Zealand Dollars. From prices for accommodation are per room per night for 2 people, unless otherwise specified and based on the lowest room category for travel in low season. Prices for tours and transfers are per person, unless otherwise specified. For full terms and conditions including pricing and conditions, refer to the Booking Conditions at the back of this brochure.

SOFITEL FIJI RESORT & SPA



Denarau Island (RGB)
MAP PAGE 36 REF. 7

From **\$459***

- ❖ Beachfront location with lagoon style swimming pool
- ❖ Family friendly facilities including a kid's club with six interactive spaces
- ❖ Adults only Waitui Beach Club with an infinity pool, luxury cabanas as well as a bar and restaurant
- ❖ Complimentary introductory dives conducted by instructors in the pool
- ❖ Three restaurants including the signature beachfront restaurant, Solis

Includes full breakfast daily.

Location: On Denarau Island, just 20 minutes' drive from Nadi International Airport, and a short walk to the Port Denarau Marina and the Denarau Golf and Racquet Club. Distances: Beachfront, Nadi Airport 15km.

Getting There: We recommend airport transfers be booked in conjunction with your accommodation. See page 17 for further details.

Property Features: Pools (3 – 1 lagoon, 1 children's, 1 adults only), Spa, Restaurants (3), Bars (4), 24 hour room service, Kids Beach Club 3-12 years (extra charge), So SPA, Sauna, Use of non-motorised watersports (free), Gym, Resort shops (5), 24 hour reception, 296 rooms.

Room Features: Air-conditioning, Balcony or patio, Mini bar, Cable TV, In-room movies (free), Bathrobes.

Max Capacity: Superior Oceanside King/Superior Oceanside Queen/Deluxe Oceanside Queen/Family Oceanside/Luxury Family Oceanside – 4, Deluxe Oceanside King/Waitui Beach Club Oceanside King – 2, Deluxe Oceanside 2 Queen/Prestige Ocean View Suite/Opera Suite – 3.



Waitui Beach Club



Superior Oceanside King



*Prices are a guide only, subject to change and availability and are in New Zealand Dollars. From prices for accommodation are per room per night for 2 people, unless otherwise specified and based on the lowest room category for travel in low season. Prices for tours and transfers are per person, unless otherwise specified. For full terms and conditions including pricing and conditions, refer to the Booking Conditions at the back of this brochure.



Natadola Beach, InterContinental Fiji Golf Resort & Spa

CORAL COAST & PACIFIC HARBOUR

The Coral Coast and Pacific Harbour on Viti Levu are holiday hotspots of Fiji. Find beachfront resorts, stunning surf beaches and an array of attractions unrivalled in the South Pacific. Stretching from Nadi Town to Suva, the coastline is a combination of bays, beaches, rocky outcrops and mangrove forests. The surfing on the Coral Coast's reef breaks is sensational, but for non surfers, there are numerous other water activities to enjoy. Swim, snorkel or take to the open ocean in search of game fish including tuna, wahoo and sailfish.

SEE

- Visit the Sigatoka Sand Dunes National Park, home to an extensive dune system and archaeological site dating back 3000 years
- See endangered native species like the peregrine falcon and crested iguana at Fiji's only wildlife park, Kula Wild Adventure Park
- Experience Fiji's culture on a day tour to Robinson Crusoe Island

DO

- Take a thrilling jetboat adventure to the heart of Fiji's main island with a Sigatoka River Safari

EAT & DRINK

- Visit the markets around the Sigatoka Valley for fresh fruit and vegetables, the area is known as 'Fiji's salad bowl'

WHAT'S ON

Coral Coast Festival

September (dates to be confirmed)

Bilibili Races, Sigatoka

October (dates to be confirmed)

Uprising Festival of Music, Dance & Lights

October (dates to be confirmed)

Coral Coast Sevens Rugby

January (dates to be confirmed)



| REF. | HOTELS | PAGE | REF. | HOTELS | PAGE |
|------|---|------|------|--|------|
| 1 | Bedarra Beach Inn ◆◆◆ | 43 | 9 | Outrigger Fiji Beach Resort ◆◆◆◆◆ | 49 |
| 2 | Crusoe's Retreat ◆◆◆ | 43 | 10 | The Pearl Resort & Spa ◆◆◆◆ | 51 |
| 3 | Fiji Hideaway Resort & Spa ◆◆◆◇ | 45 | 11 | Shangri-La's Fijian Resort & Spa ◆◆◆◆◇ | 47 |
| 4 | Fiji Marriott Resort Momi Bay ◆◆◆◆◆ | 45 | 12 | Tambua Sands Resort ◆◆◇ | 43 |
| 5 | InterContinental Fiji Golf Resort & Spa ◆◆◆◆◆ | 48 | 13 | Warwick Fiji ◆◆◆◆◆ | 50 |
| 6 | Likuri Island Resort Fiji ◆◆◇ | 43 | 14 | The Wellesley Resort ◆◆◆ | 44 |
| 7 | Nanuku Auberge Resort Fiji ◆◆◆◆◆ | 51 | 15 | Yadua Bay Resort ◆◆◆ | 44 |
| 8 | The Naviti Resort ◆◆◆◆ | 46 | 16 | Yatule Resort & Spa ◆◆◆◆◆ | 44 |



InterContinental Fiji Golf Resort & Spa

LIKURI ISLAND RESORT FIJI



Island Bure

Likuri Island, Coral Coast (RCZ)
MAP PAGE 42 REF. 6

From **\$306***

- ❖ Complimentary use of sea kayaks and stand up paddle boards
- ❖ Cultural activities including nightly Kava ceremonies
- ❖ Kids will love the Kasi Kasi Kids Club

Includes light breakfast daily.

Location: Situated on Likuri Island, just north of Natadola Beach on Fiji's Coral Coast. The mainland jetty to the island is a 45 minute drive from Nadi. Distances: Beach 15m, Nadi Airport 42km.

Getting There: We recommend transfers be booked in conjunction with your accommodation. See page 17 for further details.

Property Features: Wi-Fi (extra charge), Pool, Restaurant, Bar, Kasi Kasi Kids Club 5-12 years (free), Day spa, Massage facilities, Library, Nightly entertainment, Parking (free), 23 rooms.

Room Features: Ocean Views, Patio, Ceiling fan, Tea/coffee making facilities.

Max Capacity: Island Bure/Garden Bure – 2, Family Bure – 4, Beachfront Bure – 4, Likuri Beach House – 6.



TAMBUA SANDS RESORT



Garden Bure

Queens Road, Korolevu (TBV)
MAP PAGE 42 REF. 12

From **\$180***

- ❖ Beachfront resort
- ❖ Free use of snorkelling equipment, canoes and kayaks
- ❖ Dine on fresh seafood at Tambua Sands Restaurant

Includes light breakfast daily.

Location: Situated beachfront along the Coral Coast and close to Kula Wild Park, Sigatoka River Safari and Robinson Crusoe Island. Distances: Beachfront, Nadi Airport 87km.

Getting There: We recommend airport transfers be booked in conjunction with your accommodation. See page 17 for further details.

Property Features: Free Wi-Fi (common areas), Private beach, Pool, Restaurant, Bar, Room service, Laundry facilities, 25 rooms.

Room Features: Fan, Balcony/Patio, Tea/coffee making facilities, Ironing facilities, Bathrobes, Hair dryer.

Max Capacity: Garden Bure – 2 adults/2 children, Beachfront Bure – 2 adults/1 child, Beachfront Plunge Pool Bure – 2.



BEDARRA BEACH INN



Sunset Strip, Korotogo (XXB)
MAP PAGE 42 REF. 1

From **\$176***

- ❖ Beachfront resort
- ❖ Explore the lagoon with free use of kayaks and snorkelling equipment
- ❖ Indulge in a happy hour cocktail at the Talanoa Bar

Includes welcome drink and a Fiji foot ritual spa treatment per adult.

Location: Set on the Coral Coast and opposite a lagoon beach and coral reef, the resort is a short drive from the Sigatoka Sand Dunes National Park. Distances: Beach 30m, Nadi Airport 76km.

Getting There: We recommend airport transfers be booked in conjunction with your accommodation. See page 17 for further details.

Property Features: Wi-Fi (common areas – extra charge), Internet facilities, Pool, Restaurant, Bar, Room service, Day spa, Child minding available (extra charge), Guest lounge, Use of kayaks, snorkelling equipment and beach towels (free), 25 rooms.

Room Features: Wi-Fi (extra charge), Air-conditioning, Fan, Patio (Standard), Balcony (except Standard), Tea/coffee making facilities, Safe.

Max Capacity: Standard – 2, Deluxe/Superior/Premium – 4.



CRUSOE'S RETREAT



Seaview Bure

Queens Road, Korolevu (GRE)
MAP PAGE 42 REF. 2

From **\$205***

- ❖ Authentic Fijian adult only resort
- ❖ Experience Fijian culture with a traditional village neighbouring the resort
- ❖ See the giant clams, tropical fish and an abundance of sea life in the lagoon

Includes light breakfast daily and welcome drink on arrival.

Location: Located off the beaten track, surrounded by lush tropical gardens and fronting a palm fringed sandy beach and stunning lagoon. Distances: Beachfront, Nadi Airport 100km.

Getting There: We recommend airport transfers be booked in conjunction with your accommodation. See page 17 for further details.

Property Features: Pool, Restaurant, Bars (2), Coco's Spa (day spa), Games room, Resort shop, Evening entertainment, 28 rooms.

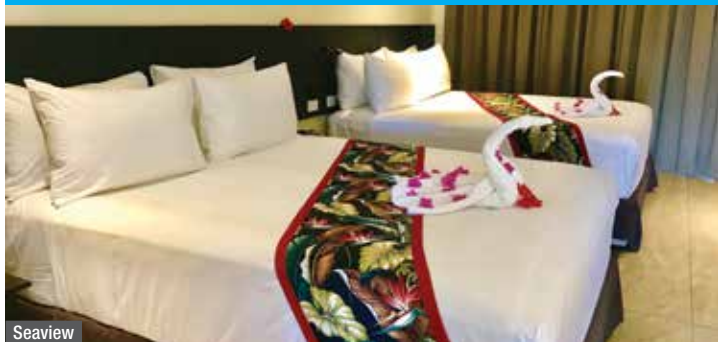
Room Features: Wi-Fi (extra charge), Ocean views, Air-conditioning (Deluxe Seaside Bure), Balcony or patio, Fan, Tea/coffee making facilities, Hair dryer, All rooms non smoking.

Max Capacity: Seaview Bure/Deluxe Seaside Bure – 2, Seaside Bure/Deluxe Seaview Bure – 3 adults.



*Prices are a guide only, subject to change and availability and are in New Zealand Dollars. From prices for accommodation are per room per night for 2 people, unless otherwise specified and based on the lowest room category for travel in low season. Prices for tours and transfers are per person, unless otherwise specified. For full terms and conditions including pricing and conditions, refer to the Booking Conditions at the back of this brochure.

YADUA BAY RESORT



Seaview

Queens Road, Sigatoka (SIG)
MAP PAGE 42 REF. 15

From **\$208***

- ❖ Boutique beachfront resort
- ❖ Outdoor swimming pool with waterslide
- ❖ Restaurant on-site open for breakfast, lunch and dinner

Location: Beachfront on the Coral Coast and a five minute drive from Sigatoka and a 45 minute drive from Nadi. Distances: Nadi Airport 63km.

Getting There: We recommend airport transfers be booked in conjunction with your accommodation. See page 17 for further details.

Property Features: Free Wi-Fi (common areas), Pool (infinity), Restaurant, Bar, Room service, Children's Playground, Laundry service, 24 hour reception, Parking (free), 40 rooms.

Room Features: Air-conditioning, Balcony/patio, Tea/coffee making facilities, Limited kitchen facilities with microwave (Seaview Villa Suite, Seaview Villa), Cable TV.

Max Capacity: Seaview – 3 adults/1 child, Seaview Villa Studio – 2, Seaview Villa Suite – 3, Seaview Villa – 5.



THE WELLESLEY RESORT



Man Friday Road, Coral Coast (PHR)
MAP PAGE 42 REF. 14

From **\$232****

- ❖ Welcoming guests 16 years and over
- ❖ Choose a Pool Villa for your own private plunge pool and courtyard
- ❖ Complimentary use of snorkelling equipment

Includes light breakfast daily, FJD50 dining credit per room, one way transfer from Nadi Airport.

Location: Situated on the Coral Coast in 100 acres of pristine tropical rainforest, the unique rooms and suites are set back on a valley overlooking the Pacific Ocean. Distances: Beachfront, Shop 19km.

Getting There: We recommend transfers be booked in conjunction with your accommodation. See page 17 for details.

Property Features: Free Wi-Fi (common areas), Pool, Restaurant, Bar, Café, Room service, Laundry service, Guest Laundry, 24 hour reception, 16 rooms.

Room Features: Private plunge pool (Pool Villa), Air-conditioning, Patio, Tea/coffee making facilities, Cable TV, Ironing facilities, Hair dryer.

Max Capacity: Standard/Executive Suite/Pool Villa – 2.

^ Minimum 2 night stay applies.

YATULE RESORT & SPA



Pool View Bure

Queens Highway, Natadola (NTA)
MAP PAGE 42 REF. 16

From **\$368***

- ❖ Direct access to the famous white sands of Natadola Beach
- ❖ Play a round of golf at the nearby Natadola Bay Golf Course
- ❖ Signature restaurant, NA UA has exquisite views of Natadola Beach

Includes breakfast daily, welcome drink and a cool towel.

Location: On white sands overlooking the blue lagoon of Natadola Beach. The resort is a just under an hour drive from Nadi Airport. Distances: Beachfront, Nadi Airport 42km.

Getting There: We recommend airport transfers be booked in conjunction with your accommodation. See page 17 for further details.

Property Features: Free Wi-Fi (common areas), Pool, Restaurant, Bars (2 – including swim-up bar), Spa Vishala (day spa), Parking (free), 36 rooms.

Room Features: Wi-Fi (extra charge), Air-conditioning, Tea/coffee making facilities, Ironing facilities, Hair dryer, Safe.

Max Capacity: Pool View Bure/Beachfront Bure – 2, Deluxe Ocean View Bure/Deluxe Beachfront Bure – 3.



FIJI HIDEAWAY RESORT & SPA



Frangipani Bure

Queens Road, Korolevu (HDW)
MAP PAGE 42 REF. 3

From **\$291***

- ❖ Families will love the Hermit Crab Kids Club and the children's wading pool
- ❖ Experienced surfers can paddle out from the resort to a nearby surf break
- ❖ Discover Fiji culture at Sekoula Village

Includes light breakfast, welcome drink, introduction to scuba dive in resort pool.

Location: On 600 metres of sandy beach along the Coral Coast. Distances: Beachfront, Nadi Airport 85km.

Getting There: We recommend airport transfers be booked in conjunction with your accommodation. See page 17 for further details.

Property Features: Free Wi-Fi (common areas), Pool, Restaurants (4), Café, Bar, Nightly entertainment, Kids club 4-12 years (free), Day Spa, Gym, 115 rooms.

Room Features: Air-conditioning, Balcony/patio, Tea/coffee making facilities, Safe.

Max Capacity: Frangipani Bure/Beachfront Villa – 3 adults or 2 adults/2 children, Ocean View Bure – 3. Other room types also available.



Beachfront Villa



FIJI MARRIOTT RESORT MOMI BAY



Deluxe Lagoon View

Savusavu Road, Momi Bay (OBB)
MAP PAGE 42 REF. 4

From **\$472***

- ❖ Adults only Over Water Bures
- ❖ Family friendly resort with kid's pool, calm sandy lagoon and family rooms
- ❖ Enjoy a fusion of Fijian and Indian cuisine at Goji Kitchen & Bar

Includes full breakfast daily.

Location: On Momi Bay, near Nadi on the western coast of Viti Levu. The resort is a 45 minute drive from Nadi International Airport. Distances: Beachfront, Nadi Airport 33km.

Getting There: We recommend airport transfers be booked in conjunction with your accommodation. See page 17 for details.

Property Features: Pools (3 – including children's wading), Spa, Restaurants (3), Bars (4), Café, 24 hour room service, Turtles Kids Club 4-12 years (free), Quan Spa (day spa), Tennis court, Children's playground, Gym, 250 rooms.

Room Features: Air-conditioning, Balcony or patio, Tea/coffee making facilities.

Max Capacity: Deluxe Lagoon View/Deluxe Lagoon Front – 2 adults/2 children. Other room types available.



THE NAVITI RESORT



Queens Road, Korolevu (NVI)
MAP PAGE 42 REF. 8

From **\$436***

- ❖ The resort overlooks a calm lagoon
- ❖ Kids will love the Ratu & Adi Vonu Kids Club
- ❖ Nightly Gold Night Fire Dancing show
- ❖ Free activities include stand-up paddle boarding and kayaking
- ❖ Nine hole par three golf course on-site
- ❖ Nukunuku Restaurant offers all day scenic beachfront alfresco dining

Includes full breakfast daily and welcome drink.

Location: On the beach midway between Nadi and the Fijian capital Suva on the Coral Coast. Distances: Beachfront, Nadi Airport 90km.

Getting There: We recommend airport transfers be booked in conjunction with your accommodation. See page 17 for further details.

Property Features: Free Wi-Fi (common areas), Golf course (9 hole), Pool, Spa, Restaurant, Bars (2 – 1 swim-up), Room service, Kids club 5-12 years (free), The Joy Spa (day spa), 24 hour reception, 220 rooms.

Room Features: Wi-Fi (extra charge), Air-conditioning, Balcony or patio, Tea/coffee making facilities, Cable TV, Ironing facilities.

Max Capacity: Garden View/Ocean View – 3 adults or 2 adults/2 children, Studio Villa/ Suite/1 Bedroom Villa – 2.



Garden View



*Prices are a guide only, subject to change and availability and are in New Zealand Dollars. From prices for accommodation are per room per night for 2 people, unless otherwise specified and based on the lowest room category for travel in low season. Prices for tours and transfers are per person, unless otherwise specified. For full terms and conditions including pricing and conditions, refer to the Booking Conditions at the back of this brochure.

SHANGRI-LA'S FIJIAN RESORT & SPA



Yanuca Island (FIJ)
MAP PAGE 42 REF. 11

From **\$496***

- ❖ Great for families with an inflatable water park, kids club and pool
- ❖ Nine hole golf course designed by Peter Thompson
- ❖ Choose from six restaurants and two bars
- ❖ Three swimming pools
- ❖ Couples will love the adults only Reef Wing accommodation with private access to an adult only infinity pool

Includes full buffet breakfast daily.

Location: On Fiji's Coral Coast on the 109 acre private island of Yanuca. The island is linked by a causeway to the mainland and is a 45 minute from Nadi International Airport and 10 minutes from the Sigatoka Sand Dunes National Park. Distances: Beachfront, Nadi Airport 60km.

Getting There: We recommend airport transfers be booked in conjunction with your accommodation. See page 17 for further details.

Property Features: Free Wi-Fi (designated common areas), Internet facilities, Chapel, Golf course (9 hole), Pools (3), Spa, Restaurants (6), Bars (6), 24 hour room service, Kids club 4-12 years (free), CHI The Spa (day spa), Tennis courts (2), Gym, Mini golf, Resort shop, Guest laundry, 443 rooms.

Room Features: Free Wi-Fi, Air-conditioning, Balcony or patio, Tea/coffee making facilities, Cable TV, Ironing facilities, Hair dryer, Bathrobes and slippers.

Max Capacity: Yanuca Lagoon Deluxe/Yanuca Lagoon Terrace/Yanuca Lagoon Grand Deluxe/Ocean Deluxe King/Ocean Deluxe Twin/Ocean Terrace/Ocean Grand Deluxe – 3 adults or 2 adults/2 children, Yanuca Lagoon Suite – 2 adults/3 children, Yanuca Lagoon 1 Bedroom Bure – 2 adults/2 children, Yanuca Lagoon 2 Bedroom Bure – 4 adults or 2 adults/4 children. Other room types also available.



Yanuca Lagoon Deluxe



*Prices are a guide only, subject to change and availability and are in New Zealand Dollars. From prices for accommodation are per room per night for 2 people, unless otherwise specified and based on the lowest room category for travel in low season. Prices for tours and transfers are per person, unless otherwise specified. For full terms and conditions including pricing and conditions, refer to the Booking Conditions at the back of this brochure.

INTERCONTINENTAL FIJI GOLF RESORT & SPA



Club InterContinental

Natadola Bay, Natadola (NTA)
MAP PAGE 42 REF. 5

From **\$541***

- ❖ Play a round of golf on the 18 hole championship course
- ❖ Three swimming pools including an adults only infinity pool and a family pool
- ❖ Free use of non-motorised watersports for one hour per person per day
- ❖ Opt for a Club suite to enjoy the added benefits of Club InterContinental
- ❖ Nightly entertainment at the Karma Lounge including traditional Fijian and South Pacific entertainment

Includes full breakfast daily.

Location: Set on the beach at Natadola Bay along the Coral Coast. Distances: Beachfront, Nadi Airport 50km.

Getting There: We recommend airport transfers be booked in conjunction with your accommodation. See page 17 for further details.

Property Features: Pools (3), Golf course (18 hole), Restaurants (5), Bar, Kids club 4-12 years (extra charge), Day spa, 266 rooms.

Room Features: Wired internet (extra charge), Air-conditioning, Mini bar, Tea/coffee making facilities, Cable TV, DVD Player, Ironing facilities, Cleopatra bath.

Max Capacity: Garden View Double/1 Bedroom Club Suite/1 Bedroom Club Suite Plunge – 3 adults or 2 adults/2 children, Garden View King/Pool View King/Lagoon View King/Lagoon View King Suite/Beachfront View King/Beachfront View King Suite – 3, 2 Bedroom Club Suite/2 Bedroom Club Suite Plunge – 5, Nadadola Suite – 7.



Club InterContinental



Garden View Double



*Prices are a guide only, subject to change and availability and are in New Zealand Dollars. From prices for accommodation are per room per night for 2 people, unless otherwise specified and based on the lowest room category for travel in low season. Prices for tours and transfers are per person, unless otherwise specified. For full terms and conditions including pricing and conditions, refer to the Booking Conditions at the back of this brochure.

OUTRIGGER FIJI BEACH RESORT



Queens Highway, Sigatoka (REE)
MAP PAGE 42 REF. 9

From **\$405***

- ❖ Family friendly with kid's club, teen activity program and MeiMei nanny child minding service
- ❖ Fiji cultural activities, entertainment and non-motorised watersports
- ❖ Two pools including a lagoon pool and an adults only pool
- ❖ Nightly sunset ceremony
- ❖ Stay in a Suite or Bure and enjoy a personalised Talai Butler service

Includes welcome drink and cool towel on arrival.

Location: On the Coral Coast just one hour and 20 minutes from Nadi Airport. Nearby attractions include the Kula WILD Adventure Park, Sigatoka Sand Dunes and the Sigatoka River Safari. Distances: Beachfront, Nadi Airport 80km.

Getting There: We recommend airport transfers be booked in conjunction with your accommodation. See page 17 for further details.

Property Features: Pools (2 – 1 lagoon, 1 adults only), Spa, Restaurants (5), Bars (5 – 1 swim-up), 24 hour room service, Kids Club 3-12 years (free), Bebe Spa (day spa), Gym, Use of snorkelling equipment and non-motorised watersports (free), Tennis courts (2 – floodlit), Nightly entertainment, Golf driving range, 24 hour reception, 252 rooms.

Room Features: Air-conditioning, Fan, Balcony or verandah, Hammocks (Bure), Mini bar, In-room movies (pay to view), Cable TV, Ironing facilities, Bath, Bathrobes, Hair dryer.

Max Capacity: Resort View/Ocean View/Plantation Bure/Ocean Breeze Bure/Beachfront Bure – 3 adults or 2 adults/2 children, 1 Bedroom Suite – 3 adults or 2 adults/3 children, Family Plantation Bure/2 Bedroom Family Suite – 6 adults.



Resort View



*Prices are a guide only, subject to change and availability and are in New Zealand Dollars. From prices for accommodation are per room per night for 2 people, unless otherwise specified and based on the lowest room category for travel in low season. Prices for tours and transfers are per person, unless otherwise specified. For full terms and conditions including pricing and conditions, refer to the Booking Conditions at the back of this brochure.

CORAL COAST HOTELS

WARWICK FIJI



Queens Road, Korolevu (WWH)
MAP PAGE 42 REF. 13

From **\$514***

- ❖ Perfect for families with complimentary kid's club, daily activities and nanny services
- ❖ Learn to dive at the Warwick Fiji Dive Centre
- ❖ Multiple dining options available including the seafood restaurant Wicked Walu, set on a secluded island
- ❖ Indulge at Warwick Spa, overlooking the stunning lagoon

Includes full buffet breakfast daily.

Location: On absolute beachfront along the Coral Coast, midway between Nadi Airport and the capital city of Suva. Distances: Beachfront, Nadi Airport 105km.

Getting There: We recommend airport transfers be booked in conjunction with your accommodation. See page 17 for further details.

Property Features: Pools (2), Spa, Restaurants (5), Bars (6), Room service, Kids club 3-12 years (free), Warwick Spa (day spa), Bicycle hire, Gym, Tennis courts (4), Squash courts (2), Hair salon, Laundry service, 24 hour reception, Non smoking, Parking (free), 247 rooms.

Room Features: Air-conditioning, Balcony, Mini bar, Tea/coffee making facilities, Cable TV, Ironing facilities, Hair dryer, Safe.

Max Capacity: Garden View/Superior Garden View/Ocean View – 3 adults or 2 adults/ 2 children, Warwick Club – 2, Suite – 2 adults/2 children.



Ocean View



Garden View



* Prices are a guide only, subject to change and availability and are in New Zealand Dollars. From prices for accommodation are per room per night for 2 people, unless otherwise specified and based on the lowest room category for travel in low season. Prices for tours and transfers are per person, unless otherwise specified. For full terms and conditions including pricing and conditions, refer to the Booking Conditions at the back of this brochure.

THE PEARL RESORT & SPA



Garden View

Queens Highway, Pacific Harbour (PHR)
MAP PAGE 42 REF. 10

From **\$331***

- ❖ Play a round of golf at The Pearl Golf & Country Club
- ❖ Spoil for choice with five restaurants and a swim up pool bar
- ❖ All rooms feature balcony with garden or water views

Includes full breakfast daily, welcome drink and cool towel on arrival.

Location: Set on the beach in the heart of Fiji's adventure capital of Pacific Harbour. Distances: Beachfront, Nadi Airport 150km.

Getting There: We recommend airport transfers be booked in conjunction with your accommodation. See page 17 for further details.

Property Features: Wi-Fi (common areas – extra charge), Golf course (18 hole), Pool, Restaurants (5), Bars (5), 24 hour room service, Day spa, Gym, 210 rooms.

Room Features: Wi-Fi (extra charge), Air-conditioning, Balcony, Tea/coffee making facilities, Cable TV, Ironing facilities.

Max Capacity: Garden View/Ocean View – 3 adults or 2 adults/2 children. Other room types also available.



Premium Ocean View



NANUKU AUBERGE RESORT FIJI



Nanuku Suite

Nanuku Drive, Pacific Harbour (PHR)
MAP PAGE 42 REF. 7

From **\$1032***

- ❖ Boutique beachfront resort where you can snorkel right off the beach
- ❖ Families will love the free nanny and buddy service
- ❖ Dine on fresh seafood at Kanavata Restaurant and Lounge

Includes full buffet breakfast daily, a selection of non-alcoholic beverages daily including mini bar, complimentary sunset canapés at Kanavata Clubhouse Bar.

Location: Beachfront property on a private 550 acre estate and within minutes of Pacific Harbour. Distances: Nadi Airport 140km, Suva Airport 75km.

Getting There: We recommend airport transfers be booked in conjunction with your accommodation. See page 17 for further details.

Property Features: Pool, Spa, Restaurant, Bars (2), Lailai Adventure Kids Club 5-12 years (free), Day spa, Gym, 37 rooms.

Room Features: Ocean views, Private pool (except Ocean View Suite), Air-conditioning, Patio or balcony, Kitchen (Residences), Mini bar.

Max Capacity: Nanuku Suite (Ocean or Garden)/Beachfront Pool Suite/Beachfront Spa Villa – 3 adults or 2 adults/2 children. Other room types also available.



*Prices are a guide only, subject to change and availability and are in New Zealand Dollars. From prices for accommodation are per room per night for 2 people, unless otherwise specified and based on the lowest room category for travel in low season. Prices for tours and transfers are per person, unless otherwise specified. For full terms and conditions including pricing and conditions, refer to the Booking Conditions at the back of this brochure.



Mamanuca Islands

MAMANUCA ISLANDS

Exploring Fiji's Mamanuca Islands is like a treasure hunt through the most idyllic destinations. Lift the lid on the reef-fringed beaches and uncover well established island resorts, coral cays and uninhabited volcanic atolls perfect for a quiet picnic. The white sands and quintessential swaying palm trees are the main attractions of the islands, where diving and snorkelling are a must for water lovers.

SEE

- See spectacular 360 degree island and water views from the lookouts on Malolo and Vomo islands
- Snorkel or dive the Mamanucas to see vibrant coral and marine life

DO

- Surfers should not miss surfing at Cloudbreak, known to have some of the best surf breaks in the world
- Kids will love learning about Fiji culture and the turtle breeding program at Treasure Island
- Be pampered in one of the many day spas at the resorts of the Mamanucas Island

EAT & DRINK

- Learn how to cook Fijian cuisine in a cooking class at one of the island resorts

WHAT'S ON

Fiji Regatta Week

September (dates to be confirmed)

Mana Swim Festival

20 to 25 October



| REF. | HOTELS | PAGE | REF. | HOTELS | PAGE |
|------|-------------------------------------|------|------|--------------------------------------|------|
| 1 | Beachcomber Island Resort ◆◆◆ | 53 | 4 | Musket Cove Island Resort ◆◆◆◆ | 58 |
| 2 | Castaway Island, Fiji ◆◆◆◆ | 56 | 4 | Plantation Island Resort ◆◆◆ | 54 |
| 3 | Funky Fish Beach & Surf Resort ◆◆◆◇ | 53 | 7 | Sheraton Tokoriki Resort & Spa ◆◆◆◆◆ | 60 |
| 3 | Likuliku Lagoon Resort ◆◆◆◆◆ | 60 | 3 | Six Senses Fiji ◆◆◆◆◆ | 61 |
| 4 | Lomani Island Resort ◆◆◆◆ | 53 | 7 | Tokoriki Island Resort ◆◆◆◆◆ | 62 |
| 3 | Malolo Island Resort ◆◆◆◆ | 57 | 8 | Treasure Island Fiji ◆◆◆◆◆ | 59 |
| 5 | Mana Island Resort & Spa ◆◆◆◆◇ | 55 | 3 | Tropica Island Resort ◆◆◆◆ | 58 |
| 6 | Matamanoa Island Resort ◆◆◆◆ | 57 | 9 | Vomo Island ◆◆◆◆◆ | 61 |

FUNKY FISH BEACH & SURF RESORT



Malolo Island (LLD)
MAP PAGE 52 REF. 3

From **\$476***

- ❖ Great for surfers, famous surf breaks are a 20 minute boat ride away
- ❖ Swim and snorkel on the surrounding coral reefs
- ❖ All rooms have a balcony

Includes breakfast, lunch and dinner daily.

Location: In the Mamanuca Island group and close to some of Fiji's best surf breaks.
Distances: Beachfront.

Getting There: From Nadi Airport by coach/launch via Denarau Marina or by helicopter. See pages 17 to 19 for details.

Property Features: Free Wi-Fi (common areas), Pool, Restaurant, Bar, Day spa, Resort shop, Library, Laundry service, 20 rooms.

Room Features: Ocean views, Air-conditioning (Cloud Break View), Fan, Balcony or patio, Tea/coffee making facilities, All rooms non smoking.

Max Capacity: Beachfront Island Bure – 2, Cloud Break View – 3, 1 Bedroom Beachfront Bure – 3 adults or 2 adults/2 children, 2 Bedroom Beachfront Bure – 5.



BEACHCOMBER ISLAND RESORT



Beachcomber Island (BCH)
MAP PAGE 52 REF. 1

From **\$369***

- ❖ Great resort for the active with many watersports available
- ❖ Complimentary daily coral viewing, fish feeding and snorkelling trips
- ❖ Learn to dive in the PADI training facility

Includes breakfast, lunch and dinner daily.

Location: Set on a marine sanctuary in the heart of the Mamanuca Islands.
Distances: Beachfront.

Getting There: From Nadi Airport by coach/launch via Denarau Marina. See pages 17 to 19 for details.

Property Features: Free Wi-Fi (common areas), Pool, Spa, Restaurant, Bar, Kiosk, Day spa, Library, Laundry service, 53 rooms.

Room Features: Ocean views, Air-conditioning (Oceanfront, Beachfront Bure), Balcony, Tea/coffee making facilities, All rooms non smoking.

Max Capacity: Private Lodge – 2, Ocean Front Bure/Beachfront Bure – 4, Oceanfront – 3.



LOMANI ISLAND RESORT



Deluxe Suite

Malolo Lailai Island (PTF)
MAP PAGE 52 REF. 4

From **\$631***

- ❖ Exclusive adults only resort
- ❖ Join in free dolphin safari, guided snorkelling and village tours
- ❖ All rooms boast ocean views and beach access

Includes full breakfast daily, welcome drink, shell lei, 15 minute foot massage per person.

Location: On Malolo Lailai Island, in the Mamanuca Islands to the west of Fiji's main island Viti Levu. Distances: Beachfront.

Getting There: From Nadi Airport by coach/launch via Denarau Marina or by helicopter or seaplane. See pages 17 to 19 for details.

Property Features: Pool (lagoon), Restaurant, Bar, Room service, Lomani Spa (day spa), Gym, Use of snorkelling equipment and non-motorised watersports, 30 rooms.

Room Features: Private plunge pool (Beachfront Pool Bure), Ocean views, Air-conditioning, Balcony or patio, DVD player, Bathrobes, Hair dryer.

Max Capacity: Deluxe Suite/Hibiscus Suite – 3, Beachfront Bure/Beachfront Pool Bure – 2.



Hibiscus Suite



MAMANUCA ISLANDS HOTELS

PLANTATION ISLAND RESORT



Malolo Lailai Island (PTF)
MAP PAGE 52 REF. 4

From **\$351***

- ❖ Family friendly resort with many accommodation options
- ❖ Kids will love the inflatable waterpark and the kids and teens club
- ❖ Tee off on the nine hole golf course
- ❖ Adults only dining at The Flame Tree restaurant
- ❖ Three freshwater swimming pools
- ❖ Ocean View Hotel rooms newly opened in September 2019

Includes welcome drink and shell lei on arrival.

Location: On the beach overlooking a sheltered lagoon. It is a 50 minute boat ride or 10 minute flight from Nadi. Distances: Beachfront.

Getting There: From Nadi Airport by coach/launch via Denarau Marina or by helicopter or seaplane. See pages 17 to 19 for details.

Property Features: Pools (4 – 1 lagoon, 1 waterslide), Golf course (9 hole), Restaurants (3), Bars (2), Kids club 4-12 years (free), Teens club 12-16 years (free), Day spa, Tennis court, Mini golf, Use of non-motorised watersports, Guest lounge, Guest laundry, 24 hour reception, 165 rooms.

Room Features: Wi-Fi (extra charge), Air-conditioning, Fan, Balcony or patio, Tea/coffee making facilities, Safe, All rooms non smoking.

Max Capacity: Poolside/Studio Garden Bure/1 Bedroom Garden Terrace/Beachfront Bure – 4 adults/1 child, Ocean View Hotel – 4, 2 Bedroom Garden Bure – 6.



Beachfront Bure



Poolside



*Prices are a guide only, subject to change and availability and are in New Zealand Dollars. From prices for accommodation are per room per night for 2 people, unless otherwise specified and based on the lowest room category for travel in low season. Prices for tours and transfers are per person, unless otherwise specified. For full terms and conditions including pricing and conditions, refer to the Booking Conditions at the back of this brochure.

MANA ISLAND RESORT & SPA



Mana Island (MNF)
MAP PAGE 52 REF. 5

From **\$741***

- ❖ Two pools, an infinity edge and an adults only pool
- ❖ Family friendly resort with a kid's club
- ❖ Choose the adults only Premium Beach Bure with a private plunge pool
- ❖ Cultural activities including grass skirt making, weaving, kava ceremony and Polynesian dancing
- ❖ Relax with a cool drink at the beachside Vonu Bar

Includes breakfast, lunch and dinner daily.

Location: Set 30 kilometres west of Nadi in the heart of the Mamanuca Islands.
Distances: Beachfront.

Getting There: From Nadi Airport by coach/launch via Denarau Marina or by helicopter or seaplane. See pages 17 to 19 for details.

Property Features: Wi-Fi (common areas – extra charge), Wedding chapel, Restaurants (6), Bars (4), Pools (2 – 1 family, 1 adults only infinity edge), Spa, Tennis courts (2), Room service, Poolside café, Kids club 3-12 years (extra charge), Mana Spa (day spa), Games room, Children's playground, Marine activities bure, Dive shop, Boutique, Laundry service, 160 rooms.

Room Features: Air-conditioning, Balcony, Tea/coffee making facilities, Ironing facilities, Hair dryer, Safe.

Max Capacity: Island Bure – 2 adults/3 children or 3 adults/1 child, Ocean View – 3 adults or 2 adults/2 children, Deluxe Ocean View – 4 adults or 3 adults/2 children, Oceanfront Suite – 5 adults or 3 adults/3 children, Beachfront Bure/Premium Beach Bure – 2.



Beachfront Bure



Island Bure



*Prices are a guide only, subject to change and availability and are in New Zealand Dollars. From prices for accommodation are per room per night for 2 people, unless otherwise specified and based on the lowest room category for travel in low season. Prices for tours and transfers are per person, unless otherwise specified. For full terms and conditions including pricing and conditions, refer to the Booking Conditions at the back of this brochure.

MAMANUCA ISLANDS HOTELS

CASTAWAY ISLAND, FIJI



Castaway Island (CST)
MAP PAGE 52 REF. 2

From **\$890***

- ❖ Family friendly resort with a designated family pool, family rooms and a kid's club
- ❖ Adult friendly pool with a swim up pool bar and spa
- ❖ Free use of non-motorised watersports including stand-up paddle boards, kayaks, catamarans and glass bottom boat
- ❖ Snorkel right off the beach

Includes welcome drink and weekly Wednesday management cocktail party.

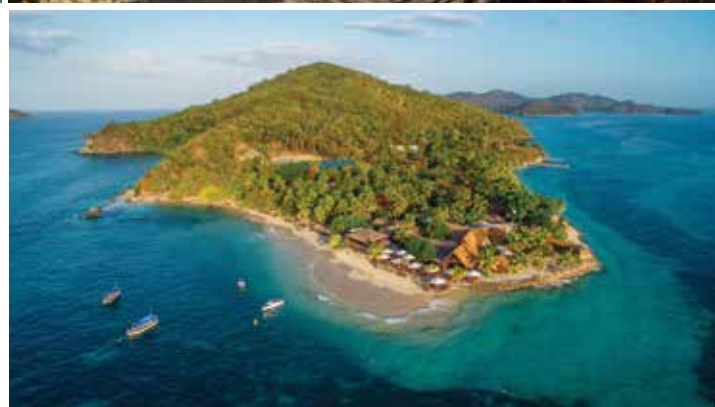
Location: Set on a private island in the heart of Fiji's Mamanuca Islands. The islands 174 acres are covered in rich tropical rainforest, surrounded by white sand beaches and vibrant coral reefs. Distances: Beachfront.

Getting There: From Nadi Airport by coach/launch via Denarau Marina or by helicopter or seaplane. See pages 17 to 19 for details.

Property Features: Free Wi-Fi (common areas), Pools (2), Restaurants (4), Bars (4), Kids club 3-12 years (free), Nanny service (extra charge), Massage facilities, Dive centre, Tennis court, Table tennis, Use of non-motorised watersports and snorkelling equipment (free), Resort shop, Guest laundry, 24 hour reception, 65 rooms.

Room Features: Air-conditioning, Fan, Balcony, Bathrobes, Hair dryer.

Max Capacity: Island Bure/Ocean View Bure/Beach Bure – 4, Grand Bure – 6, Family Beach Bure – 9.



Island Bure



*Prices are a guide only, subject to change and availability and are in New Zealand Dollars. From prices for accommodation are per room per night for 2 people, unless otherwise specified and based on the lowest room category for travel in low season. Prices for tours and transfers are per person, unless otherwise specified. For full terms and conditions including pricing and conditions, refer to the Booking Conditions at the back of this brochure.

MALOLO ISLAND RESORT



Island Bure

Malolo Island (LLD)
MAP PAGE 52 REF. 3

From **\$559***

- ❖ The kids will love **Tia's Treehouse kids club** and **Khail's Club lounge** for teenagers
- ❖ Variety of free activities including stand-up paddle boarding, wind surfing and use of snorkelling equipment

Includes welcome drink and a cool towel on arrival.

Location: On Malolo Island in the Mamanucas, 25 kilometres from Nadi International Airport and can be accessed by fast catamaran, private speedboat or seaplane. Distances: Beachfront.

Getting There: From Nadi Airport by coach/launch via Denarau Marina or by seaplane. See pages 17 to 19 for details.

Property Features: Pools (2), Spa, Restaurants (3), Bars (3), Kids club 4-12 years (free), Teenage lounge (13-18 years), Day spa, 46 rooms.

Room Features: Air-conditioning, Fan, Verandah, Tea/coffee making facilities.

Max Capacity: Island Bure/Ocean View Bure/Deluxe Oceanview Bure – 4, Family Bure – 7, Tadra Beach Bure – 2.



MATAMANOIA ISLAND RESORT



Resort

Matamanoia Island (ZMN)
MAP PAGE 52 REF. 6

From **\$495***

- ❖ Secluded adults only resort
- ❖ Private plunge pools in the Beachfront Villas and Beachfront Bures
- ❖ Unique treetop spa

Includes full breakfast daily and a 10 minute foot ritual at Veidomoni Spa.

Location: Set in the Mamanuca Islands approximately 30 kilometres west of Nadi International Airport. Distances: Beachfront.

Getting There: From Nadi Airport by coach/launch via Denarau Marina or by helicopter. See pages 17 to 19 for details.

Property Features: Free Wi-Fi (common areas), Pool, Spa, Restaurant, Bar, Veidomoni (day spa), Tennis court, Nightly entertainment, Boutique, Laundry service, 46 rooms.

Room Features: Wi-Fi (extra charge), Private plunge pool (Beachfront Bure, Villa), Ocean views, Air-conditioning, Fan, Patio, Tea/coffee making facilities, Mini bar (on request), Bathrobes (Beachfront Bure, Villa), Hair dryer.

Max Capacity: Resort – 2, Beachfront Bure/Beachfront Villa – 3.



*Prices are a guide only, subject to change and availability and are in New Zealand Dollars. From prices for accommodation are per room per night for 2 people, unless otherwise specified and based on the lowest room category for travel in low season. Prices for tours and transfers are per person, unless otherwise specified. For full terms and conditions including pricing and conditions, refer to the Booking Conditions at the back of this brochure.

MAMANUCA ISLANDS HOTELS

MUSKET COVE ISLAND RESORT



Raintree

Malolo Lailai Island (PTF)
MAP PAGE 52 REF. 4

From **\$420***

- ❖ Perfect resort for active couples and families
- ❖ Enjoy a drink at the Yacht Club Island Bar, an iconic sand between the toes bar
- ❖ Hire a bike and explore the resort's sandy paths

Includes full breakfast daily.

Location: Set in the Mamanuca Islands on Malolo Lailai. The resort's proximity to Nadi International Airport allows quick and easy access by high speed catamaran, seaplane and helicopter. Distances: Beachfront.

Getting There: From Nadi Airport by coach/launch via Denarau Marina or by helicopter or seaplane. See pages 17 to 19 for details.

Property Features: Free Wi-Fi (designated areas), Pool, Golf course (9 hole – adjacent), Restaurant, Bars (3), Café, Makare Day Spa, Marina, PADI dive centre, Use of non-motorised watersports, Daily activities, 55 rooms.

Room Features: Wi-Fi (extra charge), Spa (Villa), Air-conditioning, Fan, Hammock, Limited cooking facilities with microwave (Villa), Hair dryer.

Max Capacity: Beach Bure/Raintree Room – 3. Other room types also available.



TROPICA ISLAND RESORT



Sanctuary Pool Suite

Malolo Island (LLD)
MAP PAGE 52 REF. 3

From **\$788*[^]**

- ❖ Boutique resort, welcoming guests aged 16 years and over
- ❖ Spectacular sunset views from the Sunset Bar
- ❖ Beachfront resort

Includes full breakfast daily, butler service, daily one hour evening canapés and drinks, one guided snorkelling tour and 15 minute foot soak.

Location: Set in a sheltered bay on the island of Malolo and only 25 kilometres from the mainland. Distances: Beachfront.

Getting There: From Nadi Airport by coach/launch via Denarau Marina or by helicopter or seaplane. See pages 17 to 19 for details.

Property Features: Pool (infinity edge), Restaurant, Bars (2), Day Spa, Diving, Use of snorkelling equipment, kayaks, stand-up paddle boards (free), 24 rooms.

Room Features: Private plunge pool (except some Beachfront Bures), Air-conditioning, Balcony or patio, Tea/coffee making facilities, Outdoor private showers, Safe.

Max Capacity: Beachfront Bure/Beachfront Pool Bure – 3, Sanctuary Pool Suite/ Honeymoon Pool Bure – 2.

^ Minimum 2 night stay applies.



Beachfront Bure



* Prices are a guide only, subject to change and availability and are in New Zealand Dollars. From prices for accommodation are per room per night for 2 people, unless otherwise specified and based on the lowest room category for travel in low season. Prices for tours and transfers are per person, unless otherwise specified. For full terms and conditions including pricing and conditions, refer to the Booking Conditions at the back of this brochure.

TREASURE ISLAND FIJI



Treasure Island (ZTI)
MAP PAGE 51 REF. 8

From **\$645***

- ❖ Iconic resort, great for families, couples and honeymooners
- ❖ Traditional cultural activities including Kava Ceremony
- ❖ Kids will love the Little Treasures Kids Club
- ❖ Three tiered infinity swimming pool
- ❖ All rooms have ocean views
- ❖ Snorkel right off the beach

Includes welcome drink, afternoon tea daily, canapés during happy hour daily, weekly management cocktail party.

Location: Located west of Nadi, on a coral cay in the Mamanuca Island group. The island is easily accessible and is one of the closest island resorts to Nadi International Airport. Distances: Beachfront.

Getting There: From Nadi Airport by coach/launch via Denarau Marina or by helicopter. See pages 17 to 19 for details.

Property Features: Wi-Fi (common areas), Beachfront wedding chapel, Pool, Restaurants (4), Bar, Café, Kids club 4-12 years (free), Senikai Spa (day spa), Mini golf, Tennis court, Use of non-motorised watersports and snorkelling equipment (free), Use of motorised watersports (extra charge), PADI dive centre, Daily environmental program, Games room, Nightly entertainment, 78 rooms.

Room Features: Wi-Fi (extra charge), Air-conditioning, Fan, Balcony, Tea/coffee making facilities, Ironing facilities, Hair dryer, Safe.

Max Capacity: Oceanview Bure – 3 adults or 2 adults/2 children, Premium Oceanview Bure/Premium Beachfront Bure – 4 adults or 2 adults/3 children.



Oceanview Bure



*Prices are a guide only, subject to change and availability and are in New Zealand Dollars. From prices for accommodation are per room per night for 2 people, unless otherwise specified and based on the lowest room category for travel in low season. Prices for tours and transfers are per person, unless otherwise specified. For full terms and conditions including pricing and conditions, refer to the Booking Conditions at the back of this brochure.

MAMANUCA ISLANDS HOTELS

LIKULIKU LAGOON RESORT



Garden Beachfront Bure

Malolo Island (LLK)
MAP PAGE 52 REF. 3

From **\$1527***

- ❖ Luxurious island escape for adults only
 - ❖ Ice and freshly baked cookies delivered daily to all bures
 - ❖ Sunset drinks at the Masima Bar situated on an island in the central lagoon
- Includes breakfast, lunch and dinner daily, welcome drink and cool towel.**

Location: Situated on Malolo Island in the Mamanuca group of islands, 25km from Nadi International Airport. Distances: Beachfront.

Getting There: From Nadi Airport by coach/launch via Denarau Marina or by helicopter or seaplane. See pages 17 to 19 for details.

Property Features: Pool, Spa, Restaurant, Bars (2), Tatadra Spa (day spa), 45 rooms.

Room Features: Air-conditioning, Balcony, Fan, Tea/coffee making facilities.

Max Capacity: Garden Beachfront Bure/Beachfront Bure/Deluxe Beachfront Bure/Overwater Bure – 2.



Overwater Bure



SHERATON TOKORIKI RESORT & SPA



Island Breeze

Tokoriki Island (ZTK)
MAP PAGE 52 REF. 7

From **\$556***

- ❖ The kids will be kept entertained with the kids club and games room
- ❖ Tokoriki Retreat Spa, the largest day spa in the Mamanuca Islands
- ❖ Reserve a table at Tokoriki Coco Palms for an evening of cultural entertainment

Location: Sitting on the remote island of Tokoriki surrounded by white sand beaches and crystal waters. Distances: Beachfront.

Getting There: From Nadi Airport by coach/launch via Denarau Marina or by helicopter. See pages 17 to 19 for details.

Property Features: Pool, Restaurants (2), Café, Bar, Kids club 4-12 years (free), Day spa, Gym, Resort shops (2), Cinema, Tennis court, Coco Palms cultural venue, 101 rooms.

Room Features: Private plunge pool (Island Family Suite, Tokoriki Retreat), Air-conditioning, Fan, Tea/coffee making facilities, Docking station, Safe.

Max Capacity: Island Breeze/Ocean Breeze/Ocean View/Beachfront/Tokoriki Ocean View Retreat/Tokoriki Beachfront Retreat – 2, Island Family Suite – 4.



* Prices are a guide only, subject to change and availability and are in New Zealand Dollars. From prices for accommodation are per room per night for 2 people, unless otherwise specified and based on the lowest room category for travel in low season. Prices for tours and transfers are per person, unless otherwise specified. For full terms and conditions including pricing and conditions, refer to the Booking Conditions at the back of this brochure.

SIX SENSES FIJI



Hideaway Pool Villa



Beachfront Pool Villa

Malolo Island (LLD)
MAP PAGE 52 REF. 3

From **\$1605***

- ❖ Don't miss the Six Senses spa for the ultimate relaxation
- ❖ All day dining at Tovolea Restaurant with views of the pool and beach
- ❖ Watch a movie under the stars at the outdoor cinema

Location: Set in a protected bay with crystal clear waters and white sand beaches. Distances: Beachfront.

Getting There: From Nadi Airport by coach/launch via Denarau Marina or by helicopter. See pages 17 to 19 for details.

Property Features: Restaurants (3), Bars (2), Café, Ice-creamery, Deli, Bakery, Room service, Pool, Kids club 4-12 years (free), Six Senses Spa (day spa), Gym, Theatre, 24 hour reception, 34 rooms.

Room Features: Private plunge pool, Air-conditioning, Patio, Kitchen with microwave and dishwasher (Pool Residence), Tea/coffee making facilities, Mini bar, Cable TV.

Max Capacity: Beachfront Pool Villa/Hideaway Pool Villa – 3, Hideaway Pool Suite – 4, Beachfront Pool Residence – 8. Other room types also available.



VOMO ISLAND



Hillside Villa



Vomo Island (VOM)
MAP PAGE 52 REF. 9

From **\$1834***

- ❖ Luxury boutique resort
- ❖ Adults only area with bar and infinity pool at the Vomo Rocks Pool
- ❖ The kids will be entertained during their stay at the Kids Village

Includes breakfast, lunch, dinner and non-alcoholic beverages including mini bar daily, and laundry service. Residences also include Butler service.

Location: A private island escape that provides a truly unique and personal Fijian experience. Distances: Beachfront.

Getting There: From Nadi Airport by coach/launch via Denarau Marina or by helicopter or seaplane. See pages 17 to 19 for details.

Property Features: Pool, Golf course (9 hole), Restaurants (2), Bars (2), Kids club 4-12 years (free), Day spa, Use of non-motorised watersports (free), 34 rooms.

Room Features: Air-conditioning, Patio, Mini bar (free – excluding alcoholic beverages), Tea/coffee making facilities, Bluetooth speakers, Daily laundry service (free).

Max Capacity: Hillside Villa/Beachfront Villa/Beachfront Haven – 3 adults or 2 adults/ 2 children, Beachfront Retreats – 3 adults or 2 adults/3 children. Other room types also available.



*Prices are a guide only, subject to change and availability and are in New Zealand Dollars. From prices for accommodation are per room per night for 2 people, unless otherwise specified and based on the lowest room category for travel in low season. Prices for tours and transfers are per person, unless otherwise specified. For full terms and conditions including pricing and conditions, refer to the Booking Conditions at the back of this brochure.

MAMANUCA ISLANDS HOTELS

TOKORIKI ISLAND RESORT



Tokoriki Island (ZTK)
MAP PAGE 52 REF. 7

From **\$1093***

- ❖ Boutique adults only resort
- ❖ Romantic beach holidays for couples and honeymooners
- ❖ Free use of stand-up paddle boards, kayaks, and hobie cat sailing
- ❖ Arrange an island beach picnic to the nearby Monu Island
- ❖ PADI Dive facility to discover the underwater life
- ❖ Cultural activities include village visits, local markets and kava ceremony

Includes welcome drink and cool towel on arrival and afternoon tea daily.

Location: Set in the Mamanuca group of islands and easily accessed from Nadi. Enjoy a stunning 15 minute scenic helicopter or seaplane flight from Nadi International Airport or a one hour catamaran from Port Denarau. Distances: Beachfront.

Getting There: From Nadi Airport by coach/launch via Denarau Marina or by helicopter or seaplane. See pages 17 to 19 for details.

Property Features: Chapel, Pools (2), Restaurants (2), Bar, Day spa, Resort shop, Tennis court, Exercise platform, Evening entertainment, Dive centre, Sitting room with books and board games, Use of snorkelling equipment and non-motorised watersports (free), 36 rooms.

Room Features: Patio plunge pool (Beachfront Pool Bure, Beachfront Pool Villa), Ocean views, Air-conditioning, Fan, Patio, Hammocks, Personalised mini bar, Bathrobes, Hair dryer, Indoor and outdoor showers, Safe, All rooms non smoking.

Max Capacity: Beachfront Bure/Beachfront Pool Bure – 3, Beachfront Pool Villa – 2.



Beachfront Pool Villa



Beachfront Bure



*Prices are a guide only, subject to change and availability and are in New Zealand Dollars. From prices for accommodation are per room per night for 2 people, unless otherwise specified and based on the lowest room category for travel in low season. Prices for tours and transfers are per person, unless otherwise specified. For full terms and conditions including pricing and conditions, refer to the Booking Conditions at the back of this brochure.



Yasawa Islands



YASAWA ISLANDS

Escape to the volcanic Yasawa Islands group. Less commercial than other islands, the Yasawa's boast spectacular colourful reefs and white unspoilt beaches. This is the real untouched Fiji. Popular for snorkelling, kayaking, cruising and sailing. Visit nearby villages and browse the local shell markets for souvenirs or take a day trip to the famous Blue Lagoon, where the movie of the same name was filmed.

SEE

- See traditional village life with a visit to a local village and take part in a Kava Ceremony
- From May to October, see manta rays swimming in the waters around Mantaray Island Resort
- See the majestic Sawa-I-Lau limestone caves, considered the heart of the Yasawa's

DO

- Swim in the turquoise waters of the Blue Lagoon
- Join a day tour and snorkel with reef sharks at Kuata Island
- A great way to see more than one resort is by taking a small ship cruise around the Yasawa Islands

EAT & DRINK

- Experience a Lovo feast at one of the island resorts

| REF. | HOTELS | PAGE |
|------|----------------------------------|------|
| 1 | Blue Lagoon Beach Resort ◆◆◆◇ | 64 |
| 2 | Mantaray Island Resort ◆◆◆ | 64 |
| 3 | Octopus Island Resort ◆◆◆◇ | 64 |
| 2 | Paradise Cove Resort ◆◆◆◆ | 65 |
| 4 | Viwa Island Resort ◆◆◆◆ | 64 |
| 5 | Yasawa Island Resort & Spa ◆◆◆◆◆ | 65 |



Paddle boarding, Yasawa Islands



Kava Ceremony, Yasawa Islands

YASAWA ISLANDS HOTELS

MANTARAY ISLAND RESORT



Nanuya Balavu Island (WFJ)
MAP PAGE 63 REF. 2

From **\$335***

- ❖ Great resort for active families and couples with many water activities
- ❖ Cultural activities and excursions are available
- ❖ Only resort on Nanuya Balavu Island

Includes breakfast, lunch and dinner daily.

Location: Set on the island of Nanuya Balavu in the Naviti group of the Yasawa Islands. Distances: Beachfront.

Getting There: From Nadi Airport coach/launch via Denarau Marina or by seaplane. See pages 17 to 19 for details.

Property Features: Wi-Fi (common areas – extra charge), Restaurant, Bar, Sundeck, Nightly entertainment, Scuba and Freediving School, Laundry service, 18 rooms.

Room Features: Wi-Fi (extra charge), Air-conditioning (except Jungle Bure), Balcony or patio, Tea/coffee making facilities, Outdoor shower (except Jungle Bure), Non smoking.

Max Capacity: Treehouse Bure/Jungle Bure/Reef Bure – 2, Family Reef Bure – 3, Beachfront Villa – 4.

**ALL
INCLUSIVE**

BLUE LAGOON BEACH RESORT



Garden Villa

Nacula Island (WFJ)
MAP PAGE 63 REF. 1

From **\$539***

- ❖ Great resort for families with a calm lagoon and kids club
- ❖ Variety of evening activities include movie nights, cultural nights and a beach bonfire party

Includes breakfast, lunch and dinner daily.

Location: Set in the lagoon of Nacula Bay on Nacula Island, located in the northern Yasawa Islands. Distances: Beachfront.

Getting There: From Nadi Airport by seaplane. See page 19 for details.

Property Features: Pool, Kids club 3-12 years (free), Massage facilities, Use of kayaks, snorkelling equipment and paddle boards (free), 32 rooms.

Room Features: Air-conditioning (Palm Villa, Deluxe Beachfront Villa, 2 Bedroom Garden Villa, Beachfront Villa), Balcony, Fan, Tea/coffee making facilities.

Max Capacity: Deluxe Garden Villa – 2, Garden Villa/Beachfront Villa/ Deluxe Beachfront Villa – 4, Oasis Garden Villa/2 Bedroom Garden Villa – 5, Palm Villa – 6.

FREE **ALL
INCLUSIVE**

OCTOPUS ISLAND RESORT



Wayu Island (WYI)
MAP PAGE 63 REF. 3

From **\$541***

- ❖ Kids will be kept entertained at the kids club
- ❖ PADI Dive Centre located in the resort
- ❖ Resort fronts onto Likuliku Bay, a marine sanctuary

Includes breakfast, lunch and dinner daily.

Location: On Wayu Island, the largest of the islands in the Yasawa group with a marine reserve on its doorstep. Distances: Beachfront.

Getting There: From Nadi Airport by seaplane. See page 19 for details.

Property Features: Pool, Restaurant, Bar, Kids club 3-12 years (free), Day spa, Cultural activities, Dive centre, 32 rooms.

Room Features: Air-conditioning (Beachfront Bure), Balcony, Fan, Tea/coffee making facilities (Beachfront Bure), Mini bar (Beachfront Bure).

Max Capacity: Garden Bure/Premium Garden Bure – 4, Beachfront Bure/Point Villa – 5, Poppies Lodge – 2, Deluxe Beachfront – 2, 2 Bedroom Beach Villa – 8, 3 Bedroom Beach Villa – 6.

FREE **ALL
INCLUSIVE**

VIWA ISLAND RESORT



Viwa Island (VWA)
MAP PAGE 63 REF. 4

From **\$847***

- ❖ Adults only boutique resort
- ❖ All bure are beachfront with views of the Pacific Ocean
- ❖ Salt water infinity pool

Includes full breakfast daily.

Location: Adults only resort on the island of Viwa in the Yasawas. Distances: Beachfront.

Getting There: From Nadi Airport by coach/launch via Denarau Marina to Wayu Island, then by resort boat to Viwa Island Resort. Ask your travel agent for details. See pages 17 and 18 for coach and launch details.

Property Features: Free Wi-Fi (common areas), Pool, Restaurant, Bar, Massage facilities, Watersports (free), Cultural activities and village visits, 11 rooms.

Room Features: Ocean views, Air-conditioning, Fan, Patio, Tea/coffee making facilities, Mini bar, Bathrobes, Hair dryer.

Max Capacity: Deluxe Beachfront Bure – 2, Deluxe Executive Beachfront Bure – 4.

FREE **BONUS
OFFER**

PARADISE COVE RESORT FIJI



Garden Bungalow



Naukacuvu Island (WFJ)
MAP PAGE 63 REF. 2

From **\$655***

- Great for families with a kids club and a teens only area
- Adults only retreat called The Cove, featuring two pools, bar and tapas restaurant

Includes breakfast, lunch and dinner daily.

Location: Set in a stunning cove on Naukacuvu Island surrounded by coral reefs and crystal clear water. Distances: Beachfront.

Getting There: From Nadi Airport by coach/launch via Denarau Marina or seaplane. See pages 17 to 19 for details.

Property Features: Adults only area (The Cove), Pool, Restaurant, Bar, Teens club, Kids club 3-12 years (free), Day spa, Gym, Use of kayaks and snorkelling equipment (free), Dive centre, 45 rooms.

Room Features: Air-conditioning, Balcony, Private plunge pool (Paradise Suite), Tea/coffee making facilities, Mini bar, Ironing facilities.

Max Capacity: Bungalow – 3, Paradise Bungalow – 3 adults or 2 adults/2 children. Other room types also available.



YASAWA ISLAND RESORT & SPA



Beachfront Bure Suite

Yasawa Island (YAS)
MAP PAGE 63 REF. 5

From **\$1719***

- 11 private white sand beaches
- All inclusive resort with all meals, snacks, non-alcoholic beverages
- Cultural activities include village visits and kava ceremony

Includes breakfast, lunch, dinner and non-alcoholic beverages daily, selections of motorised and non-motorised activities.

Location: This private island resort is located at the top of the Yasawa Island group. Distances: Beachfront.

Getting There: From Nadi Airport to Yasawa Island Resort & Spa via a direct flight. Ask your travel agent for details.

Property Features: Free Wi-Fi (common areas), Pool, Spa, Restaurant, Bar, Room service, Kids Club 4-14 years operating during Family Weeks, Baravi Spa (day spa), Use of motorised and non-motorised watersports (free), 18 rooms.

Room Features: Private plunge pool (Honeymoon Beachfront Bure), Absolute beachfront, Air-conditioning, Fan, Balcony or patio, Mini bar, Bluetooth speakers, Outdoor shower.

Max Capacity: Beachfront Bure Suite – 3 adults or 2 adults/2 children, Deluxe Beachfront Bure – 3 adults or 2 adults/3 children. Other room types also available.



*Prices are a guide only, subject to change and availability and are in New Zealand Dollars. From prices for accommodation are per room per night for 2 people, unless otherwise specified and based on the lowest room category for travel in low season. Prices for tours and transfers are per person, unless otherwise specified. For full terms and conditions including pricing and conditions, refer to the Booking Conditions at the back of this brochure.

REGIONAL FIJIAN ISLANDS

Get to know the real Fiji by visiting one or several of the regional islands. On Vanua Levu, coconut plantations and lush rainforest beg to be explored while Savusavu is a multicultural town set in beautiful surroundings. Taveuni is known as the Garden Island while resorts in Beqa Island and Royal Davui Island showcase breathtaking white sandy beaches.

SEE

- Experience a traditional firewalking ceremony on Beqa Island
- See a pod of local spinner dolphins on Vanua Levu's Natewa Bay

DO

- Tour the J Hunter Pearl Farm in Savusavu Bay and purchase one of the renowned pearls
- Swim in the secluded pools of the iconic Bouma Falls on Taveuni Island

EAT & DRINK

- On Taveuni, tour Gaiatree Sanctuary and learn about edible native greens and medicinal herbs before feasting on an organic seasonal menu

WHAT'S ON

Savusavu Festival Week

November (dates to be confirmed)



Bouma Falls, Taveuni Island



| REF. | HOTELS | PAGE |
|------|---|------|
| 1 | Jean-Michael Cousteau Resort Fiji ◆◆◆◆ | 68 |
| 2 | Kokomo Private Island Resort ◆◆◆◆ | 66 |
| 1 | Koro Sun Resort & Rainforest ◆◆◆◆ | 67 |
| 3 | Matangi Private Island Resort ◆◆◆◆◇ | 69 |
| 1 | Namale – The Fiji Island Resort & Spa ◆◆◆◆ | 68 |
| 4 | Paradise Taveuni ◆◆◆◆ | 67 |
| 5 | Qamea Resort and Spa ◆◆◆◆◇ | 69 |
| 6 | Royal Davui Island Resort ◆◆◆◆ | 70 |
| 1 | Savasi Island Resort ◆◆◆◆ | 70 |
| 7 | Toberua Island Resort ◆◆◆◆◇ | 67 |

KOKOMO PRIVATE ISLAND FIJI



1 Bedroom Beachfront Villa

Yaukuve Levu, Kadavu (KDV)
MAP PAGE 66 REF. 2

From **\$4924***

- ❖ Great resort for families with kids, teen club and nanny service
- ❖ Free glass-bottom boat tours
- ❖ Beachside dining at The Beach Shack, perfect for watching the sunset

Includes all meals, non-alcoholic beverages, one 45 minute spa treatment, daily laundry and ironing and one tank scuba dive per person.

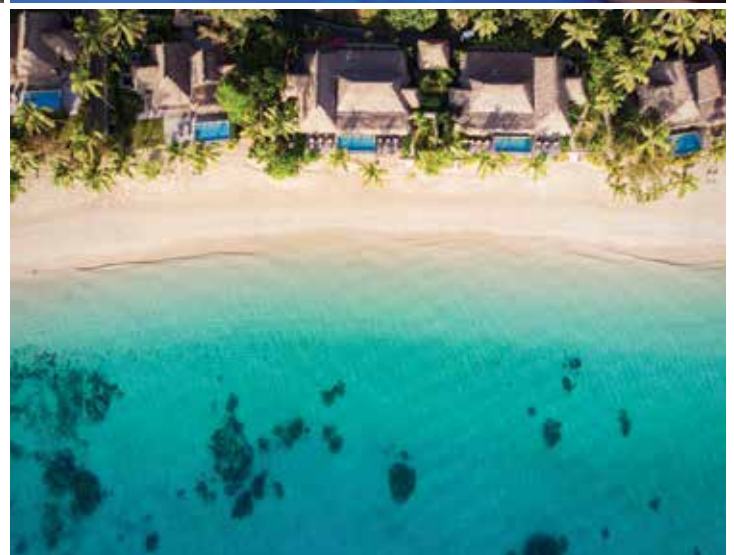
Location: In the Kadavu Islands, south of the Fijian mainland, and encircled by the Great Astrolabe Reef. Distances: Beachfront.

Getting There: From Nadi Airport by seaplane or helicopter to Kokomo Private Island. Ask your travel agent for details.

Property Features: Pool, Restaurants (3), Bar, Room service, Kids club 0-11 years (free), Nanny service 0-3 years (free), Day spa, Gym, Use of selected motorised and non-motorised watersports (free), 26 rooms.

Room Features: Private plunge pool, Air-conditioning, Kitchen (Luxury Residence), Limited cooking facilities (Beach Front Villa), Cable TV.

Max Capacity: 1 Bedroom Beachfront Villa – 3, 2 Bedroom Beachfront Villa – 5, 3 Bedroom Beachfront Villa – 9. Other room types also available.



* Prices are a guide only, subject to change and availability and are in New Zealand Dollars. From prices for accommodation are per room per night for 2 people, unless otherwise specified and based on the lowest room category for travel in low season. Prices for tours and transfers are per person, unless otherwise specified. For full terms and conditions including pricing and conditions, refer to the Booking Conditions at the back of this brochure.

REGIONAL FIJIAN ISLANDS HOTELS

PARADISE TAVEUNI



Vuna Road, Taveuni Island (TVU)
MAP PAGE 66 REF. 4

From **\$834***

- ❖ Boutique oceanfront family run resort
- ❖ Unique deep water frontage allows for snorkelling and diving any time of the day
- ❖ Learn to dive with the on-site PADI divers

Location: Positioned at the southern end of Taveuni and set on five acres of elevated oceanfront land. Distances: Beach 50m, Matei Airport 42km.

Getting There: From Nadi Airport by plane to Taveuni Airport, then private car to Paradise Taveuni. Private car transfers are included. Ask your travel agent for details.

Property Features: Free Wi-Fi (reception area only), Pool, Spa, Restaurant, Bar, Room service, Day spa, Guest lounge, Resort shop, Laundry service, 12 rooms.

Room Features: Wi-Fi (extra charge), Air-conditioning, Patio, Mini bar, Tea/coffee making facilities, Outdoor shower, Spa bath, Hair dryer, Safe.

Max Capacity: Deluxe Oceanfront Bure/Oceanview Bure/Deluxe Oceanfront Vale – 2 adults/2 children, 2 Bedroom Oceanfront Family Vale – 4 adults/2 children.



TOBERUA ISLAND RESORT



Toberua Island (TBR)
MAP PAGE 66 REF. 7

From **\$550***

- ❖ Exclusive use of island
- ❖ Free use of snorkelling equipment, kayaks and stand-up paddle boards
- ❖ Spectacular ocean views from all rooms

Location: A privately owned island situated in the Lomaiviti Islands Group off the eastern side of Fiji's main island Viti Levu. Distances: Beachfront.

Getting There: From Suva Airport by coach and launch transfers to Toberua Island Resort. Ask your travel agent for details.

Property Features: Restaurant, Bar, Pool, Spa, Day spa, Exercise equipment, 9 hole reef golf, Laundry service, 16 rooms.

Room Features: Ocean views, Fan, Patio, Tea/coffee making facilities, Mini bar, Ironing facilities, Hair dryer, Safe.

Max Capacity: Tropical Oceanfront Bure – 3 adults/1 child, Deluxe Oceanfront Bure – 4 adults/1 child. Other room types also available.



KORO SUN RESORT & RAINFOREST



Tropical Apartment



Edgewater Pool Bure

Savusavu Buca Bay Road, Savusavu, Vanua Levu (SVU)
MAP PAGE 66 REF. 1

From **\$564***

- ❖ Great for families with a kids pool, waterslide, kids club and complimentary nanny service
- ❖ Unique spa experience surrounded by the Fijian jungle

Includes light breakfast daily and return transfers from Savusavu Airport.

Location: Set on a 160 acre sanctuary on the island of Vanua Levu at the edge of a stunning private lagoon. Distances: Beachfront, Savusavu Airport 12km.

Getting There: Free return transfers from Savusavu Airport.

Property Features: Free Wi-Fi (common areas), Pools (3), Spa, Golf course (9 hole), Restaurants (2), Bars (3), Kids club 4-12 years (free), Day spa, Nanny service 0-3 years (free), 51 rooms.

Room Features: Air-conditioning, Fan, Balcony or patio, Mini bar, Tea/coffee making facilities.

Max Capacity: Tropical Apartment – 3, Garden View Bure/Edgewater Floating Bure/Edgewater Bure/Edgewater Pool Bure – 2, 2 Bedroom Bure – 5. Other room types also available.



*Prices are a guide only, subject to change and availability and are in New Zealand Dollars. From prices for accommodation are per room per night for 2 people, unless otherwise specified and based on the lowest room category for travel in low season. Prices for tours and transfers are per person, unless otherwise specified. For full terms and conditions including pricing and conditions, refer to the Booking Conditions at the back of this brochure.

REGIONAL FIJIAN ISLANDS HOTELS

JEAN-MICHEL COUSTEAU RESORT FIJI



Gardenview Bure



Oceanfront Bure

Savusavu Bay, Vanua Levu (ZCR)
MAP PAGE 66 REF. 1

From **\$1750***[^]

- ❖ Great for couples and families with many diverse complimentary activities
- ❖ Families will love the kids club, free nanny and the three family pools
- ❖ Renowned Cousteau Dive Centre and two on-site Marine Biologists

Includes breakfast, lunch and dinner daily, non-alcoholic beverages, most activities including 5 weekly off-site excursions.

Location: This authentic, luxury eco sensitive resort overlooks Savusavu Bay and is surrounded by a marine sanctuary. Distances: Beachfront, Savusavu Airport 7km.

Getting There: Free return vehicle transfers from Savusavu Airport.

Property Features: Private island, Pools (4), Restaurant, Café, Room service, Bar, Bula Kids Club 0-12 years (free), Nanny service 0-5 years (free), Day spa, 25 rooms.

Room Features: Private plunge pool (The Villa), Ocean views (except Gardenview Bure), Spa (Honeymoon Point Reef Bure, The Villa), Air-conditioning (The Villa), Sun deck, Fans, Hammock, Tea/coffee making facilities, Mini bar, Safe.

Max Capacity: Gardenview Bure/Oceanfront Bure – 4, Point Reef Bure/Honeymoon Point Reef Bure/The Villa – 5, Oceanfront 2 Bedroom – 6.

[^]Minimum 3 night stay applies.



NAMALE – THE FIJI ISLAND RESORT & SPA



Garden Tropical Bure



Savusavu, Vanua Levu (NMP)
MAP PAGE 66 REF. 1

From **\$1969***

- ❖ Unlimited sparkling wines, beers and spirits
- ❖ À la carte meals and private dining experience at 8 locations
- ❖ Motorised, non-motorised watersports and horseback riding included

Includes all meals and beverages daily.

Location: Set on the northern island of Vanua Levu, surrounded by rainforests, waterfalls and stunning coastline. Distances: Beachfront, Savusavu Airport 5km.

Getting There: Free return transfers from Savusavu Airport.

Property Features: Private waterfall, Pools (2), Spas (2), Jacuzzi, Restaurants (2), Bar, Day spa, Cultural activities, Dive shop, Bowling alley, Theatre, Use of non-motorised watersports (free), 19 rooms.

Room Features: Jacuzzi (Ocean Deluxe Bure, Honeymoon Bure, Villas), Private plunge pool (Honeymoon Bure, Villas), Ocean views (Ocean Tropical Bure, Ocean Deluxe Bure, Honeymoon Bure, Villas), Air-conditioning, Deck, Mini bar.

Max Capacity: Garden Tropical Bure/Ocean Tropical Bure/Ocean Deluxe Bure/Honeymoon Bure/Villa – 2, Grand Villa – 4.



* Prices are a guide only, subject to change and availability and are in New Zealand Dollars. From prices for accommodation are per room per night for 2 people, unless otherwise specified and based on the lowest room category for travel in low season. Prices for tours and transfers are per person, unless otherwise specified. For full terms and conditions including pricing and conditions, refer to the Booking Conditions at the back of this brochure.

MATANGI PRIVATE ISLAND RESORT



Oceanview Bure

Matangi Island (FMT)
MAP PAGE 66 REF. 3

From **\$1005***

- ❖ Boutique adults only resort on a private island
- ❖ Luxury Ocean Spa situated on the water's edge
- ❖ Unique Treehouse Bures, the ultimate in privacy

Includes welcome lei and coconut water, fresh fruit platter in room on arrival and customised sarong.

Location: A privately owned adults only resort located northeast of the main island of Viti Levu. Distances: Beachfront.

Getting There: From Nadi Airport by plane to Taveuni Airport, then a car and launch transfer to Matangi Private Island Resort. Ask your travel agent for details.

Property Features: Free Wi-Fi (common areas), Pool, Restaurant, Bar, Day Spa, Dive centre, Use of kayaks, stand up paddle boards, sail boats and snorkelling equipment, Village visits, Evening entertainment, 12 rooms.

Room Features: Jacuzzi (Treehouse), Air-conditioning, Balcony, Mini bar (on request), Docking station, Hammock (Beachfront Bure, Ocean View Bure, 2 Bedroom Bure), Outdoor shower.

Max Capacity: Treehouse – 2, Beachfront Bure/Oceanview Bure – 2, 2 Bedroom Bure – 4.



QAMEA RESORT AND SPA



Beachfront Bure

Qamea Island (VQM)
MAP PAGE 66 REF. 5

From **\$1156***

- ❖ Welcoming guests aged 12 years and over
- ❖ Snorkel off the beach
- ❖ The only Guinot Spa in the South Pacific

Includes light breakfast daily and welcome drink on arrival.

Location: An intimate beachfront resort that fronts onto a private white sand beach. Distances: Beachfront.

Getting There: From Nadi Airport by plane to Taveuni Airport, then a coach and launch transfer to Qamea. Ask your travel agent for details.

Property Features: Pool, Restaurant, Bar, Day spa, Gym, Use of snorkelling equipment and non-motorised watersports, Dive shop, Evening entertainment, Snorkel trips, Village tour, Sunday church service, 17 rooms.

Room Features: Ocean views, Air-conditioning, Fan, Deck, Mini bar, Tea/coffee making facilities, Hair dryer.

Max Capacity: Beachfront Bure – 3, Honeymoon Bure – 2, Royal Beach House/ Royal Villa – 5.



*Prices are a guide only, subject to change and availability and are in New Zealand Dollars. From prices for accommodation are per room per night for 2 people, unless otherwise specified and based on the lowest room category for travel in low season. Prices for tours and transfers are per person, unless otherwise specified. For full terms and conditions including pricing and conditions, refer to the Booking Conditions at the back of this brochure.

REGIONAL FIJIAN ISLANDS HOTELS

ROYAL DAVUI ISLAND RESORT



Island Plunge Pool Vale

Royal Davui Island, Beqa Lagoon (XRL)
MAP PAGE 66 REF. 6

From **\$1987***

- ❖ Boutique adults only resort
 - ❖ Surrounded by a marine reserve
 - ❖ Free use of stand-up paddle boards, kayaks and snorkelling equipment
- Includes breakfast, lunch, dinner and sunset canapés daily.**

Location: Surrounded by white sand beaches and turquoise waters, this exclusive adults only sanctuary is situated in the spectacular Beqa Lagoon. Distances: Beachfront.

Getting There: From Nadi Airport by resort plane and launch. Ask your travel agent for details.

Property Features: Pool, Spa, Restaurant, Bar, Room service, Davui Spa (day spa), Exercise equipment, Sundeck, Resort shop, Laundry service, 16 rooms.

Room Features: Private plunge pool, Ocean views, Air-conditioning, Balcony, Mini bar, Tea/coffee making facilities, Docking station, Spa bath, Ironing facilities.

Max Capacity: Island Plunge Pool Vale/Royal Davui Plunge Pool Suite – 2, Premium Plunge Pool Vale – 3.



SAVASI ISLAND RESORT



Oceanfront Villa

Savasi Island (XSA)
MAP PAGE 66 REF. 1

From **\$1394***

- ❖ Exclusive island escape
 - ❖ Private dining experiences include a secluded cavern or a private beach
 - ❖ Free use of snorkelling equipment, kayaks and paddle boards with a guide
- Includes breakfast, lunch and dinner daily, return transfers from Savusavu Airport, welcome cocktail.**

Location: A boutique island resort just ten minutes from Savusavu Airport on Vanua Levu. Distances: Beachfront, Savusavu 3km.

Getting There: Free return transfers from Savusavu Airport.

Property Features: Restaurant, Bar, Room service, Sea Spray Spa (day spa), Sundeck, Resort shop, Laundry service, Guest lounge, 10 rooms.

Room Features: Private pool (except Beach House), Ocean view, Air-conditioning (except Coral Villa), Patio, Tea/coffee making facilities, Mini bar, Outdoor bath (Sea Breeze Villa), Bathrobes, Hair dryer.

Max Capacity: Blue Lagoon Bure One/Blue Lagoon Bure Three – 3, Blue Lagoon Bure Two/Waterfall Villa/Sea Breeze Villa/Coral Villa – 5, Beach House – 7.



* Prices are a guide only, subject to change and availability and are in New Zealand Dollars. From prices for accommodation are per room per night for 2 people, unless otherwise specified and based on the lowest room category for travel in low season. Prices for tours and transfers are per person, unless otherwise specified. For full terms and conditions including pricing and conditions, refer to the Booking Conditions at the back of this brochure.



Rakiraki



SUVA & SUN COAST

Head to Suva, Fiji's bustling capital, for a change of pace. Discover an amazing array of shopping options and an impressive selection of bars and restaurants. Suva also boasts beautiful parks, gardens, museums as well as a vibrant nightlife. A three hour drive north of Suva lies the beautiful Sun Coast, known for its snorkelling, diving and tranquil scenery.

SEE

- Keen divers will love the reefs off Rakiraki, see turtles, colourful coral and reef sharks
- See Navatu Rock near Rakiraki, once a fortified village and one of Fiji's oldest human settlements
- Admire the fascinating colonial architecture and history of Suva's 'grand old lady' of the Pacific, the Grand Pacific Hotel

DO

- Discover Fijian culture at the Fiji Museum in Suva
- Explore Colo-i-Suva Forest Park, hike through the lush rainforest teeming with melodic bird life and swim in clear natural water holes

EAT & DRINK

- Enjoy a delicious high tea at the Grand Pacific Hotel overlooking Suva Harbour

WHAT'S ON

Fiji Fashion Week, Suva

May (dates to be confirmed)

South Indian Fire Walking Festival, Suva

August (dates to be confirmed)

Hibiscus Festival, Suva

August (dates to be confirmed)

Fiji Day, Suva

10 October

| REF. | HOTELS | PAGE |
|------|--------------------------------------|------|
| 1 | Dolphin Island, Private Island ◆◆◆◆◇ | 73 |
| 2 | Grand Pacific Hotel ◆◆◆◆◇ | 72 |
| 2 | Holiday Inn Suva ◆◆◆◆ | 72 |
| 2 | Novotel Suva Lami Bay ◆◆◆◆ | 72 |
| 3 | Volivoli Beach Resort ◆◆◆◆ | 73 |
| 3 | Wananavu Beach Resort ◆◆◆◆ | 73 |



Suva Cathedral, Suva



Bligh Waters, Sun Coast

SUVA HOTELS

NOVOTEL SUVA LAMI BAY



Deluxe Oceanview

Queens Road, Suva (SUV)
MAP PAGE 71 REF. 2

From **\$199***

- ❖ Waterfront property on Lami Bay
- ❖ Free shuttle bus from the hotel to Suva
- ❖ Dine on the bayside terrace at Husk Restaurant

Location: Positioned on the edge of Suva Harbour and 15 minute drive from the Fiji capital, Suva. Distances: Town centre 8km, Suva Airport 31km.

Getting There: We recommend airport transfers be booked in conjunction with your accommodation. See page 17 for further details.

Property Features: Wi-Fi (common areas – extra charge), Pool, Restaurant, Bar, Day spa, Gym, Laundry facilities, Parking (free), 108 rooms.

Room Features: Wi-Fi (extra charge), Air-conditioning, Balcony or terrace, Tea/coffee making facilities, Ironing facilities, Safe.

Max Capacity: Deluxe Oceanview – 2, Executive Oceanview – 3.



HOLIDAY INN SUVA



Victoria Parade, Suva (SUV)
MAP PAGE 71 REF. 2

From **\$233***

- ❖ Multiple dining options including wood-fired pizzas by the water's edge from Bati ni Wai
- ❖ Great family property with interconnecting rooms and two pools

Includes breakfast daily.

Location: On the waterfront at Suva Harbour and within a five minute walk of the city centre. Distances: Town centre 300m, Suva Airport 23km.

Getting There: We recommend airport transfers be booked in conjunction with your accommodation. See page 17 for further details.

Property Features: Pool, Restaurants (2), Bar, Room service, Laundry facilities, Parking (free), 135 rooms.

Room Features: Air-conditioning, Tea/coffee making facilities, Mini bar, Ironing facilities.

Max Capacity: Standard/Superior Gardenview/Superior Seaview – 3 adults or 2 adults/2 children, Executive King – 2.



GRAND PACIFIC HOTEL



Victoria Parade, Suva (SUV)
MAP PAGE 71 REF. 2

From **\$562***

- ❖ One of the most iconic hotels in Fiji
- ❖ Spectacular sunsets over Suva Harbour from Na Toba Pool Bar
- ❖ Absolute waterfront property

Location: Set along Suva Harbour, opposite Parliament House, the hotel is a five minute walk to shops and local dining options. Distances: Town centre 500m, Suva Airport 23km.

Getting There: We recommend airport transfers be booked in conjunction with your accommodation. See page 17 for further details.

Property Features: Pool, Restaurants (5), Bars (3), 24 hour room service, Day spa, Gym, Laundry facilities, 24 hour reception, Parking (free), 113 rooms.

Room Features: Air-conditioning, Balcony or terrace, Mini bar, Tea/coffee making facilities.

Max Capacity: Park View/Superior/Premier – 3.



VOLIVOLI BEACH RESORT



Oceanview



Luxury Oceanfront Villa

Volivoli Road, Rakiraki, Viti Levu (RKK)
MAP PAGE 71 REF. 3

From **\$543***

- ❖ Boutique beachfront family run resort
 - ❖ Friendly Fijian hospitality
 - ❖ Great for active guests with an exciting range of watersports
- Includes breakfast and dinner daily, welcome drink and resort orientation.**

Location: This relaxed beachfront resort is located a two and half hour scenic coastal drive from Nadi International Airport on the northern most point of Viti Levu. Distances: Beachfront, Nadi Airport 143km.

Getting There: We recommend airport transfers be booked in conjunction with your accommodation. See page 17 for further details.

Property Features: Wi-Fi (common areas – extra charge), Pool, Restaurant, Bars (2 – 1 swim-up), Day spa, Dive shop, Fishing charters, Boutique, Parking (free), 33 rooms.

Room Features: Ocean views, Air-conditioning, Fan, Balcony, Tea/coffee making facilities.

Max Capacity: Oceanview – 4, Deluxe Oceanview/Premium Oceanview Bure – 3 adults or 2 adults/2 children, Luxury Oceanfront Villa – 4 adults/1 child.



WANANAVU BEACH RESORT



Garden View Bure



Volivoli Road, Rakiraki, Viti Levu (RKK)
MAP PAGE 71 REF. 3

From **\$251***

- ❖ Beachfront resort
 - ❖ Learn to dive at the PADI Dive Centre
 - ❖ Cultural experiences include village visits
- Includes full buffet breakfast daily.**

Location: Located on the Sun Coast, a two and a half hour drive or a short flight from Nadi. Distances: Beachfront, Nadi Airport 135km.

Getting There: We recommend airport transfers be booked in conjunction with your accommodation. See page 17 for further details.

Property Features: Wi-Fi (common areas – extra charge), Pool, Restaurant, Bar, Day spa, Use of kayaks and snorkelling equipment, Laundry service, Non smoking, 35 rooms.

Room Features: Wi-Fi (extra charge), Air-conditioning, Fan, Balcony, Tea/coffee making facilities, Ironing facilities, Hair dryer.

Max Capacity: Garden View Bure/Ocean View Bure/Ocean View Honeymoon Bure/ Beachfront Honeymoon Bure/Beachfront Bure – 3, 2 Bedroom – 5.



DOLPHIN ISLAND, PRIVATE ISLAND



Dolphin Island (RKK)
MAP PAGE 71 REF. 1

From **\$5000*^**

- ❖ Exclusive use of the island
- ❖ Free use of snorkelling equipment, kayaks and stand-up paddle boards
- ❖ Infinity pool

Includes breakfast, lunch and dinner and standard beverages (beer, wine and soft drinks) daily, and return transfers from Nadi Airport.

Location: Located 20 minutes by boat from shore, on the tip of Viti Levu. Distances: Beachfront, Nadi Airport 135km.

Getting There: Free return coach/launch transfers from Nadi Airport.

Property Features: Hilltop Sleep out bure, Pool (outdoor), Library, Sundeck, Snorkelling equipment, Use of kayaks, Hobie catamaran and paddle boards, 4 rooms.

Room Features: Ocean views, Air-conditioning, Fan, Balcony, Sun lounges, Bathrobes, Hair dryer.

Max Capacity: Bure – 8.

^Minimum 2 night stay applies.



*Prices are a guide only, subject to change and availability and are in New Zealand Dollars. From prices for accommodation are per room per night for 2 people, unless otherwise specified and based on the lowest room category for travel in low season. Prices for tours and transfers are per person, unless otherwise specified. For full terms and conditions including pricing and conditions, refer to the Booking Conditions at the back of this brochure.

ACCOMMODATION INDEX

| | | | | | |
|---|----|--|----|---|----|
| Anchorage Beach Resort..... | 34 | Malolo Island Resort..... | 57 | Shangri-La's Fijian Resort & Spa..... | 47 |
| Beachcomber Island Resort..... | 53 | Mana Island Resort & Spa..... | 55 | Sheraton Denarau Villas..... | 37 |
| Bedarra Beach Inn..... | 43 | Mantaray Island Resort..... | 64 | Sheraton Fiji Resort..... | 40 |
| Blue Lagoon Beach Resort..... | 64 | Matamanoa Island Resort..... | 57 | Sheraton Tokoriki Resort & Spa..... | 60 |
| Castaway Island, Fiji..... | 56 | Matangi Private Island Resort..... | 69 | Six Senses Fiji..... | 61 |
| Crusoe's Retreat..... | 43 | Mercure Nadi..... | 33 | Smugglers Cove Beach Resort & Hotel..... | 33 |
| Dolphin Island, Private Island..... | 73 | Musket Cove Island Resort..... | 58 | Sofitel Fiji Resort & Spa..... | 41 |
| DoubleTree Resort by Hilton Fiji..... | 35 | Namale – The Fiji Island Resort & Spa..... | 68 | Tambua Sands Resort..... | 43 |
| Fiji Gateway Hotel..... | 31 | Nanuku Auberge Resort Fiji..... | 51 | Tanoa International Hotel..... | 32 |
| Fiji Hideaway Resort & Spa..... | 45 | The Naviti Resort..... | 46 | The Terraces Denarau Island..... | 37 |
| Fiji Hideaway Resort & Spa, Vuda..... | 35 | Novotel Nadi..... | 32 | Toberua Island Resort..... | 67 |
| Fiji Marriott Resort Momi Bay..... | 45 | Novotel Suva Lami Bay..... | 72 | Tokatoka Resort Nadi..... | 31 |
| First Landing Beach Resort..... | 34 | Octopus Island Resort..... | 64 | Tokoriki Island Resort..... | 62 |
| First Landing Resort Villas & Apartments..... | 34 | Outrigger Fiji Beach Resort..... | 49 | Treasure Island Fiji..... | 59 |
| Funky Fish Beach & Surf Resort..... | 53 | The Palms Denarau..... | 37 | Tropica Island Resort..... | 58 |
| Grand Pacific Hotel..... | 72 | Paradise Cove Resort Fiji..... | 65 | Viwa Island Resort..... | 64 |
| Hilton Fiji Beach Resort & Spa..... | 38 | Paradise Taveuni..... | 67 | Volivoli Beach Resort..... | 73 |
| Holiday Inn Suva..... | 72 | The Pearl Resort & Spa..... | 51 | Vomo Island..... | 61 |
| InterContinental Fiji Golf Resort & Spa..... | 48 | Plantation Island Resort..... | 54 | Wananavu Beach Resort..... | 73 |
| Jean-Michael Cousteau Resort Fiji..... | 68 | Pullman Nadi Bay Resort & Spa..... | 33 | Warwick Fiji..... | 50 |
| Kokomo Private Island Resort..... | 66 | Qamea Resort and Spa..... | 69 | The Wellesley Resort..... | 44 |
| Koro Sun Resort & Rainforest..... | 67 | Radisson Blu Resort Fiji Denarau Island..... | 39 | The Westin Denarau Island Resort & Spa..... | 40 |
| Likuliku Lagoon Resort..... | 60 | Ramada Suites Wailoala Beach Fiji..... | 34 | Yadua Bay Resort..... | 44 |
| Likuri Island Resort Fiji..... | 43 | Royal Davui Island Resort..... | 70 | Yasawa Island Resort & Spa..... | 65 |
| Lomani Island Resort..... | 53 | Savasi Island Resort..... | 70 | Yatule Resort & Spa..... | 44 |



InterContinental Fiji Golf Resort & Spa

1. Our Services and Obligations

1.1 The services within this brochure are supplied by the wholesaler GO Holidays, a division of helloworld Travel Ltd. They consist of arranging and co-ordinating travel, entertainment and accommodation facilities and services, and making bookings, issuing tickets and issuing vouchers to be redeemed by suppliers.

1.2 We undertake to perform these services with reasonable care and skill. We will not be liable for any loss or damage, or loss of enjoyment which result from the act, default or omission of any person other than ourselves or employees, or any cause beyond our control. This includes (but is not limited to) loss, damage or loss of enjoyment which arises directly or indirectly from an Act of God, weather disruptions, dangers incidental to sea, fire, breakdown in machinery or equipment, acts of Government or authorities whether legitimate or not, wars whether declared or not, hostilities, acts of terrorism, civil disturbances, strikes, lockouts, riots, deaths, pilferage, epidemics, quarantines or medical, customs or immigration or emigration regulations.

1.3 We are not able to exercise control over services we do not supply directly, therefore we will not be responsible for any loss or damage arising from:

- Any booking made directly with a service supplier by your travel agent or by yourself direct; or
- Any services which are not provided by us and which are additional to those described in this brochure.

1.4 We will endeavour to provide the most suitable travel arrangements to meet the particular requirements you make known to us. However, travel is an individual experience, and your preferences and opinions may vary from our own. For this reason, we cannot take responsibility for your individual satisfaction, neither can we take responsibility for weather nor for compatibility of fellow guests or staff during the course of your travel.

2. Supply of Travel, Entertainment, Accommodation Service and Facilities

2.1 When we make bookings with the providers of travel, accommodation, entertainment, activities, facilities or services ("the Suppliers") we are acting as a booking agent for the Suppliers.

2.2 All travel, entertainment, activities, and accommodation facilities or services are supplied directly to you by the Supplier. We have no control over the facilities or services themselves, or the manner in which they are provided by the Suppliers. Therefore you should be aware of the following conditions:

- GO Holidays Limited will not be liable for any loss or damage of any kind that may arise from your use or consumption of, or inability to use or consume those facilities or services.
- The provision of those facilities or services is subject to the terms and conditions of your contract with each Supplier.
- Where for any reason, a Supplier is unable to provide particular facilities or services, then that Supplier may be entitled, under its contract with you to substitute those services or facilities with comparable or equivalent facilities or services without incurring any liability to you. You should check your contract with each Supplier.
- All facilities or services described by us are subject to availability from the Supplier.
- GO Holidays Limited will not be liable or responsible for any loss or damage relating to your baggage, personal possessions, health or welfare, or delays or travel disruptions unless these arise directly from the service we provide to you.

3. Business Purposes

You agree that where our services are acquired for business purposes, or where you hold yourself out as acquiring our services for business purposes, the Consumer Guarantees Act 1993 will not apply to any supply of goods or services made under these conditions, and we will not be liable or responsible for any loss or damage of any kind to you, including any consequential loss or damage however it may be caused.

4. Information in the Brochure

4.1 This brochure was published on 4 November 2019 and is valid for services used 1 April 2020 to 31 March 2021 unless otherwise advised. Exchange rates used when costing this brochure are as at 15 October 2019.

4.2 While we have exercised reasonable care and skill to ensure that the contents of this brochure are correct, accurate, and up-to-date at the time of publishing, please note that the contents of this brochure are based on information supplied to us by the Suppliers. We do not have, and cannot be reasonably expected to have, personal knowledge about all the facilities or services provided by each Supplier.

4.3 Facilities or services may change after the date of publication. We endeavour to keep travel agents informed of any changes to information in this brochure that are brought to our attention. Prior to booking your ticket, you should ask your travel agent about any changes to the published information of which your agent may be aware. You should also make sure that if your travel agent is advised of changes that occur after booking, your travel agent is able to contact you.

4.4 All maps, illustrations and photographs are for indicative purposes only and may not necessarily reflect actual places or positioning.

4.5 Accommodation must be consecutive at the same hotel to qualify for free nights. Important: Hotels have the right to change conditions e.g. 5th night free. Bonus offers: e.g. free upgrade or late checkouts are subject to availability at time of stay.

5. Prices

5.1 All prices shown in this brochure are expressed in New Zealand dollars.

5.2 Events beyond our control, such as currency fluctuations, changes to the price of aviation fuel or changes to the cost of services and facilities may result in the prices charged to you being different.

5.3 It must be understood that if for any of the reasons mentioned in Clause 5.2 price increases or variation of terms are notified to us between the time of booking and departure, we reserve the right to vary the price to you up to the time of your departure.

5.4 All prices exclude travel agent service fees.

6. Payment

6.1 A deposit of \$100 must be paid to your travel agent within seven (7) days of verbal or written confirmation of booking request. Certain Suppliers may also require an additional booking fee or deposit to be paid.

6.2 A booking requested less than seven (7) days prior to departure may incur communication charges.

6.3 Final payment shall in all cases be made not less than 30 days prior to departure. In some cases the terms of the tour or travel may require full payment at an earlier date. In that case you will be advised at the time your booking is processed.

6.4 Credit Card not permitted unless travel agent acts as merchant.

7. Amendment or Cancellation

7.1 If you wish, or circumstances require you to amend or cancel your booking for any reason, you should advise us in writing through your travel agent at the earliest possible time.

7.2 Where you cancel any booking more than thirty (30) days prior to your departure you are likely to have to pay a fee. A cancellation fee of \$200 will be imposed where cancellation is made within thirty (30) days prior to your departure, plus any suppliers charges as per note 7.3. Please refer however to Clause 7.6 for special conditions in some cases.

7.3 The above cancellation fees are required to offset booking, communication and administration charges that will have already been incurred by us. In addition to our cancellation fee, you may also be required to pay cancellation fees imposed by our Suppliers (i.e. airlines, hotels, etc.) The amount of each Supplier's cancellation fee is beyond our control, and payment is solely your responsibility. You should check with your travel agent concerning the amount of a Supplier's cancellation fees.

7.4 To the extent that we are able to do so (bearing in mind we are dependent upon third party availability beyond our control) we will be pleased to incorporate any reasonable changes you request. An itinerary change may attract a fee similar to cancellation fees in Clause 7.2 above to cover our administration costs.

7.5 Some Suppliers may reserve the right to cancel or amend travel, accommodation, etc and GO Holidays must therefore reserve similar rights to cancel or amend any holiday arrangements.

7.6 There are cases where the terms of supply as to refundability of pre-payments require provisions different from the above. In those cases the conditions specific to your tour will be advised to you at the time your booking is processed.

8. Insurance

We strongly recommend that as a minimum you insure yourself fully against cancellation, disruption, loss of luggage and personal property, and medical expenses. Your travel agent will be able to provide you with further information.

9. Items Not Covered

Unless otherwise specified, the cost of meals, drinks, laundry, telephone calls, insurance, sightseeing tours, local taxes, airport departure taxes, aviation insurance levies and passport or visa application fees are not included.

10. Package Costs

Included in the tour costs are charges for normal booking procedure costs, communication costs, administration, research, printing, etc. Where the land arrangements of holidays are included in a composite package, an itemisation of costs will not be rendered.

11. Visas / Passports

For all holidays in this brochure you will require a valid passport. You are responsible for arranging your own passport, visa and health requirements (including inoculation where applicable). You should check with your travel agent who will be able to provide you with the necessary information.

12. Non-Use of Services or Facilities

If, of your own choice, you decide not to use part or parts of the arranged services or facilities, you will not be entitled to a refund from us (provided we have carried out our service with reasonable skill and care and to your requirements) and you may not be entitled to a refund from any Supplier.

13. GO Holidays Charter for Addressing Problems

In the event that you should strike a problem or you are dissatisfied with some aspect of the services or facilities during the course of your trip, our recommendation is that you take the matter up directly with the supplier of the service at the time, or as soon as practicable in the circumstances. This provides the opportunity to have the matter discussed and investigated on the spot and a remedy negotiated then and there to enable you to continue enjoying your holiday. We have found from experience that it is very difficult (in some countries impossible) for us to obtain redress for you once travel has been completed. If this does not work, we wish to be involved at the earliest possible moment and our commitment is that we will immediately work on resolving the issue to your satisfaction.

14. Health or Disability

Some Suppliers may reserve the right to refuse to carry or accommodate people who, because of a health condition or disability, may require services or facilities to be provided in a special manner or at a certain stage of pregnancy. You should check this with your travel agent.

15. Legal Claims

The laws of New Zealand will govern any claims or legal action in connection with the provision of our services to you. Any claim or legal action against the Suppliers is likely to be subject to the terms of your contract with them, and may be governed by the laws of other countries.

16. Images

Our thanks to Tourist Bureaus, hotel, tour operators, Tourism Fiji, Adam Bruzzone, Alex Wallace, Anastasia Kariofyllidis, Andrea Rothlisberger, Arun Chand, Brett Monroe Garner, Bruce Southwick, Brydie Photography, Chris McLennan Photography, Chris Williams, Cormac Hanrahan, David Kirkland, Erin Collett, Fraser Clements, Gerry O'Leary, Hamilton Lund, Laura Pittman, Mark Snyder, Markus Gortz, Markus Roth, Rob Rickman, Ross Eason, Stephen Goodenough, Steve Pollett.

PLEASE READ THESE CONDITIONS CAREFULLY

The guarantees under the Consumer Guarantees Act will apply to services supplied by us except where they are acquired, or are held out as being acquired for business purposes.



**BOOK
OPEN
DATED***

DISCOVER FIJI WITH US

Escape the resorts and experience the real Fiji... the diverse cultures, remote islands, pristine reefs and hidden waterfalls. Don't just visit Fiji, explore it!

3, 4, 7 & 11 NIGHT SMALL SHIP DISCOVERY CRUISES

TIVUA ISLAND DAY CRUISES

SUNSET DINNER CRUISES

See pages 25 & 29

*day and dinner cruises only.

YOUR GO HOLIDAYS PREFERRED AGENT:



Travel Agent Bookings and Enquiries

Phone: **09 914 4002**

Email: **res@goholidays.co.nz**