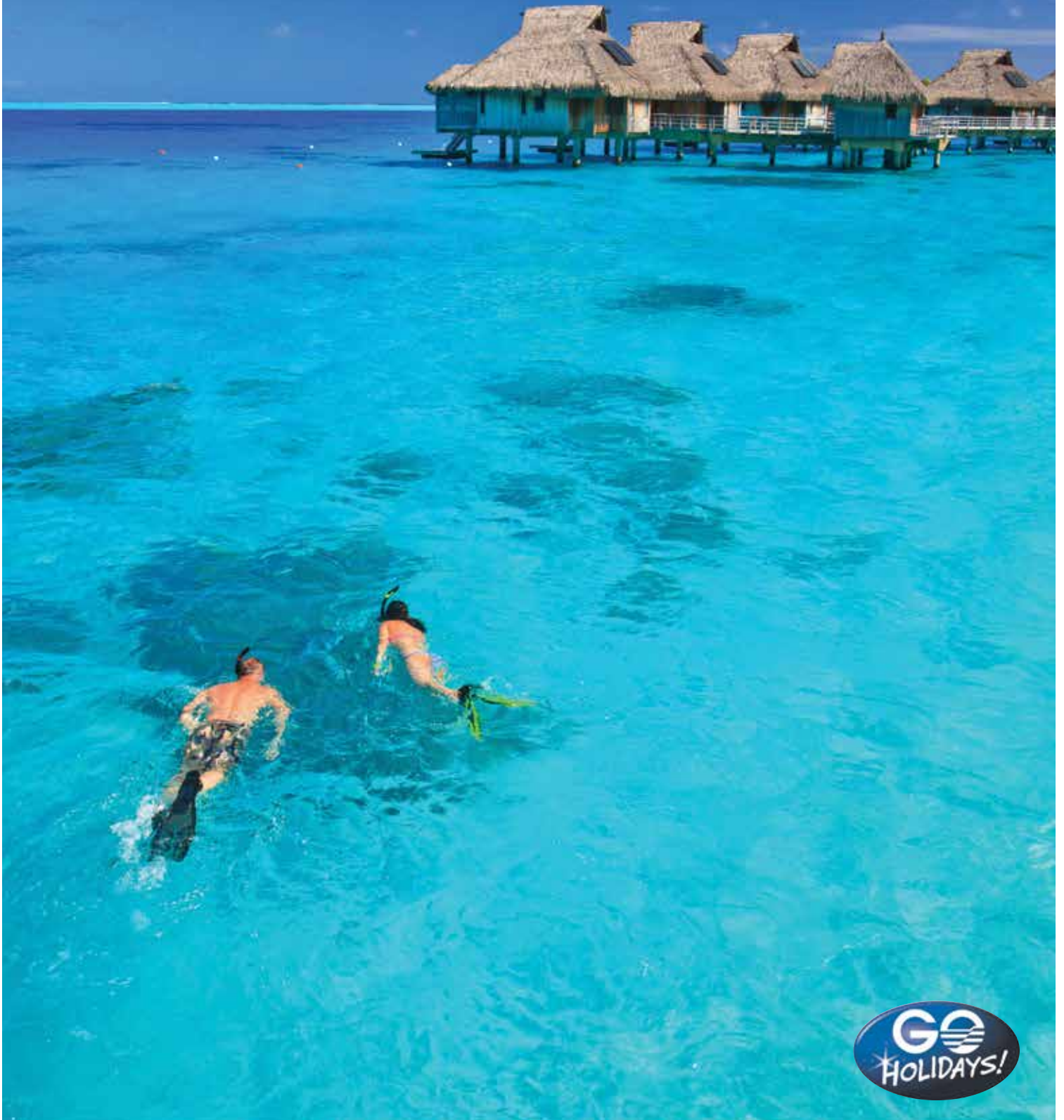


2020 - 2021

# PACIFIC ISLANDS

INCLUDING SAMOA, TAHITI, VANUATU,  
TONGA, NIUE & NEW CALEDONIA



# WELCOME TO THE PACIFIC ISLANDS

Let **GO Holidays** show you everything the Pacific Islands have to offer. Surrounded by beautiful turquoise lagoons, palm-fringed white sandy beaches and vibrant coral reefs and atolls, the many islands of the Pacific entice travellers from all corners of the globe. From warm, sunny days to the bright smiling faces of the locals, discover your own piece of paradise.

**GO Holidays** are experts at creating holidays to suit a wide variety of tastes and budgets. Whatever your needs, you can trust our dedicated travel professionals to organise your dream holiday.



Take the plunge into the clear aquamarine pools of Mele Cascades on Efate in Vanuatu



Samoa



Hilton Moorea Lagoon Resort & Spa, Tahiti

## CONTENTS

Navigating This Brochure	7
Travel Tips	9
Experiences You'll Love	10
<b>SAMOA</b>	<b>14</b>
<b>TAHITI</b>	<b>24</b>
<b>VANUATU</b>	<b>34</b>
<b>TONGA</b>	<b>49</b>
<b>NIUE</b>	<b>54</b>
<b>NEW CALEDONIA</b>	<b>58</b>
Accommodation Index	66
Booking Conditions	67

Swim straight from the deck of your overwater villa in beautiful Bora Bora

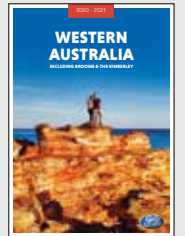
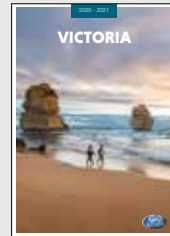
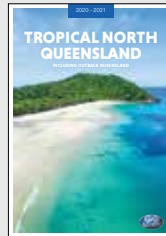
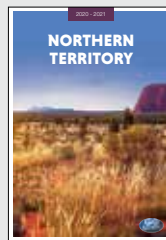


## LET GO HOLIDAYS HELP YOU CHOOSE YOUR PERFECT HOLIDAY

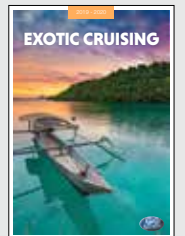
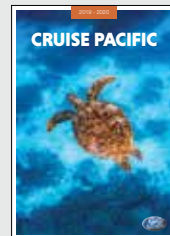
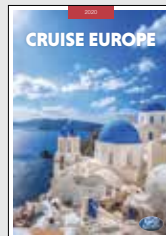
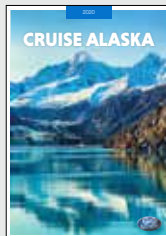
### AUSTRALIA



Fuipisia Waterfall, Samoa



### CRUISE COLLECTION



# WHY CHOOSE GO HOLIDAYS



1. GO Holidays has over 40 years' experience designing travel for New Zealand travellers
2. Our comprehensive range of innovative travel experiences are based on our own experiences
3. We work with a wide range of preferred travel agent partners across New Zealand
4. GO Holidays offers fantastic prices, a diverse range of holiday destinations, wide product choice and unmatched service
5. All our products have been tried and tested by us or our trusted overseas partners for your peace of mind

## GO ASSIST HELP DESK

We know your holiday experience doesn't end until you are safely home. That's why our GO Assist Help Desk is available 24 hours a day, seven days a week, should you require assistance during your holiday.

## TAILOR MADE HOLIDAYS

Whether it's driving along the Amalfi coastline, seeing the majestic Northern Lights or exploring Australia's Red Centre, our team of travel experts can design a custom made itinerary just for you!

With our Tailor Made holidays anything is possible, let us create your dream holiday today.

## INTERNATIONAL & NEW ZEALAND



● Snorkel in the crystal clear waters of Mare Island, New Caledonia



● Experience a traditional fire twirlers performance in Samoa





# NAVIGATING THIS BROCHURE

The following symbols should be used as a guide to assist in choosing the accommodation or touring option that best suits your needs.

Our Destination Specialists have negotiated a range of special offers including free meals, free nights, early bird booking discounts and more. Look for the following symbols on individual property listings and ask your travel agent for full details of the offer available.



## Early Bird Offer

A discount off the regular room price is available at certain times of the year for advance bookings.



## Kids Dining Offer

A dining offer for children is available, e.g. discounted or free meals. Child ages, meal types and conditions vary.



## Free Night Offer

Receive one or more free nights for stays at certain times of the year.



## Honeymoon Offer

A special bonus offer is available if you are celebrating your honeymoon. This may include sparkling wine, fruit platters, welcome drinks or spa treatments. A minimum stay may be required and conditions vary. Advise your travel agent at the time of booking.



## Bonus Offer

A bonus offer is available at certain times of the year, e.g. free breakfast, food and beverage credit, spa treatment, late check-out, room upgrade and more.

## SYMBOL GUIDE



Look for this symbol to see some of our best selling products and experiences. Our customers love them and so will you!



Properties offering free Wi-Fi access in common areas and rooms.



Properties offering in-room disabled facilities.



Properties offering family friendly facilities. This may include a kids club, kids eat free, family or interconnecting rooms and discounts off a second room for children.



Properties featuring the Luxury Collection symbol, in our view, provide an exceptional standard of accommodation, facilities and service.

## OUR RATINGS

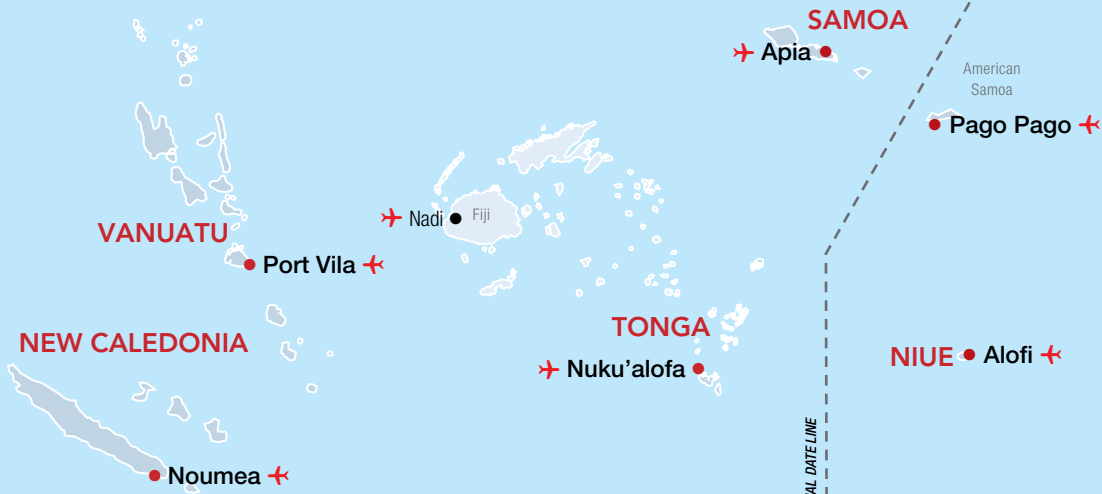
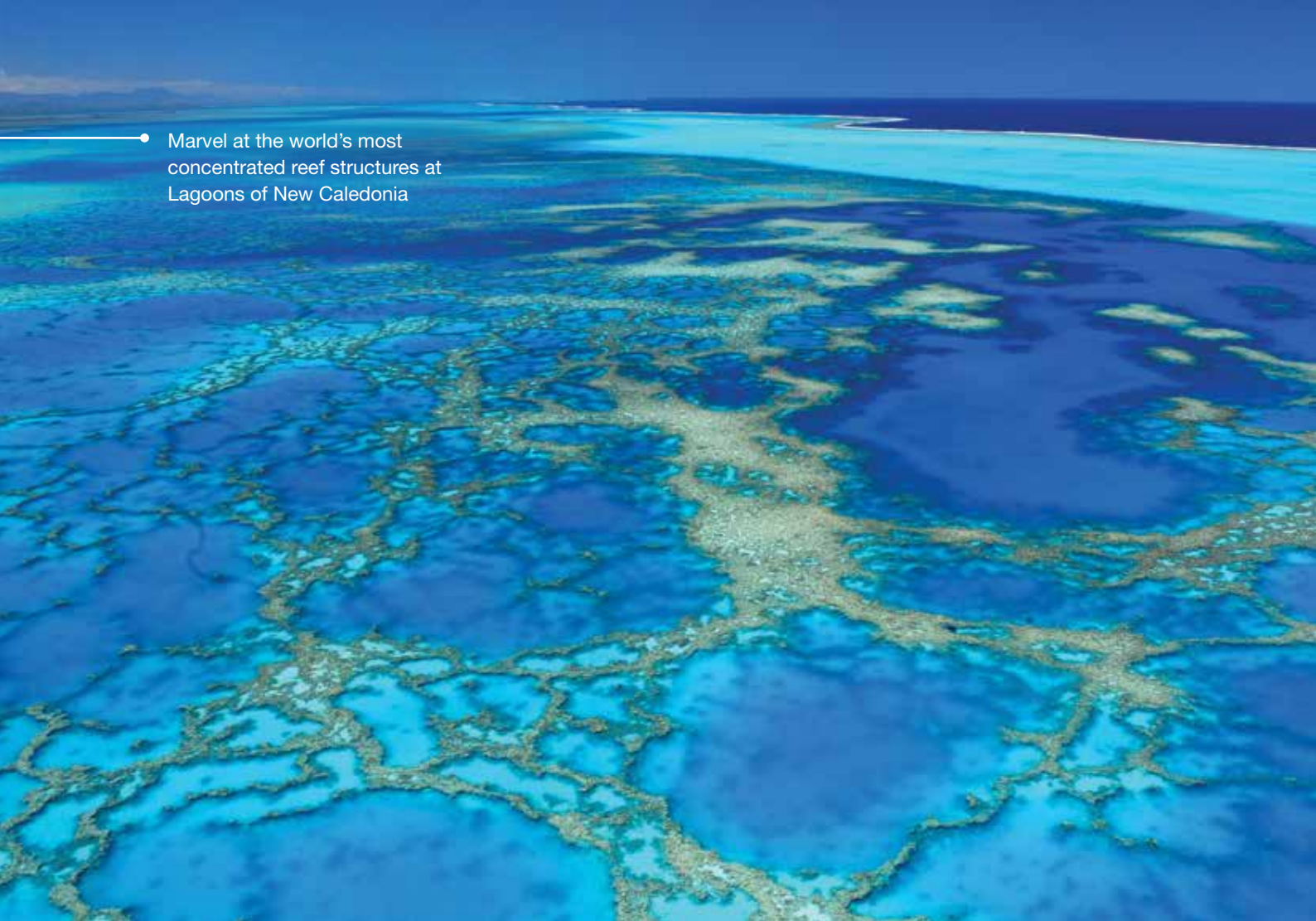
The accommodation ratings featured in this brochure will provide a general indication of the standard of accommodation and may alter throughout the year due to a change of circumstance. These are our views and are not related to any other rating system. We recommend checking with your travel agent to find the accommodation that best suits your needs and budget.

- ◆◆ Budget
- ◆◆◆ Comfortable
- ◆◆◆◆ Superior
- ◆◆◆◆◆ Deluxe
- ◇ Half rating



Mapu'a'a Vaea Blowholes, Tonga

Marvel at the world's most concentrated reef structures at Lagoons of New Caledonia



○ Norfolk Island

PACIFIC OCEAN





# TRAVEL TIPS

## WHEN TO GO

In the Pacific Islands the drier months are from approximately April to October. This time of year enjoys less humidity and pleasant temperatures for lounging on the beach, snorkelling, diving and hiking. Keep an eye out for the majestic Humpback whales in their natural habitat off the coast in Tonga and Niue.

While temperatures in the Pacific Islands are constant year-round, the warmer months of November to March can bring tropical showers and storms. During the green season, get off the beaten path and see the many spectacular waterfalls in full flow.

## VISAS & PASSPORTS

A valid passport is required with at least six months validity beyond the intended stay. For Samoa, Tahiti, Vanuatu, Tonga, Niue and New Caledonia, a visa is not required for stays of up to 30 days. Travel advice is available from the New Zealand Government Ministry of Foreign Affairs and Trade at [www.safetravel.govt.nz](http://www.safetravel.govt.nz).

## TIME

Niue and Tahiti are 22 hours behind New Zealand Standard Time (NZST). Vanuatu and New Caledonia are one hour behind of NZST. Tonga and Samoa are one hour ahead of NZST. Daylight Saving Time is observed in Samoa from September to March where clocks are turned forward by one hour.

## CURRENCY

Samoa	Samoa Tala (WST)
Tahiti & New Caledonia	French Pacific Franc (XPF)
Vanuatu	Vatu (VUV)
Tonga	Tongan Pa'anga (TOP)
Niue	New Zealand Dollar (NZD)

## LANGUAGE

Samoa: Samoan is the official language.  
 Tahiti: French and Tahitian are both spoken.  
 Vanuatu: French and Bislama (Pidgin English) are both spoken.  
 Tonga: Tongan is the official language.  
 Niue: Niuean is the official language.  
 New Caledonia: French is the official language.  
 English is widely spoken throughout all islands and is used in hotels, resorts and restaurants.

## ELECTRICITY

Samoa, Vanuatu, Tonga, Niue: 240V 50Hz.  
 Tahiti: 220V 60Hz. An international adapter is required.  
 New Caledonia: 220V 50Hz. An international adapter is required.

## TIPPING & BARGAINING

In Samoa, Tahiti and Tonga, tipping is not practised or expected, however leaving a small monetary gift for good service will be welcomed. Bargaining is not practised. In accordance with Vanuatu and New Caledonian customs, tipping and bargaining are not practised. Tipping and bargaining in Niue is not encouraged.

## GETTING AROUND

Take the time to explore and discover as you make your way around the Pacific Islands. The standard left hand rule applies to driving in Samoa and Niue. When driving in Vanuatu the right hand rule applies. A current drivers licence from an English speaking country is required, drivers from other countries need an international driving permit.

INTERNATIONAL AIRPORT

## TEMPERATURE & RAINFALL

Samoa	J	F	M	A	M	J	J	A	S	O	N	D
Temperature (max °C)	30	29	30	30	29	29	29	29	29	29	30	30
Average rainfall (mm)	455	386	358	254	160	130	81	89	132	170	267	371
Tahiti	J	F	M	A	M	J	J	A	S	O	N	D
Temperature (max °C)	27	27	27	27	26	25	24	24	25	25	26	26
Average rainfall (mm)	315	234	201	145	91	61	61	48	46	91	163	318
Vanuatu	J	F	M	A	M	J	J	A	S	O	N	D
Temperature (max °C)	31	31	30	29	28	27	26	26	27	28	30	30
Average rainfall (mm)	270	293	323	215	168	161	92	86	90	104	135	191
Tonga	J	F	M	A	M	J	J	A	S	O	N	D
Temperature (max °C)	31	31	31	28	28	27	27	27	27	28	29	29
Average rainfall (mm)	125	202	228	125	152	103	101	125	101	97	101	126
Niue	J	F	M	A	M	J	J	A	S	O	N	D
Temperature (max °C)	30	30	30	29	28	27	27	27	27	28	28	29
Average rainfall (mm)	105	84	108	159	96	60	45	39	51	54	78	66
New Caledonia	J	F	M	A	M	J	J	A	S	O	N	D
Temperature (max °C)	27	27	28	25	24	21	21	20	22	23	24	24
Average rainfall (mm)	113	123	135	111	91	129	73	70	39	53	63	73

**TAHITI**  
 Papeete



Bora Bora, Tahiti

# EXPERIENCES YOU'LL LOVE

The best part of any journey is the experiences you have along the way, leaving you with memories to relive long after the holiday is over.

The Pacific Islands have countless amazing things to see and do. Here are 10 of our favourites to inspire your wanderlust.



Niue

## WHALE WATCHING

Between the months of May and September, Humpback whales arrive in the southern Pacific Islands of New Caledonia, Niue, Tahiti and Tonga to frolic and nurse their new calves. Watch as these gentle giants splash and breach close to shore. The best land viewing points in Tonga are the small islands within Tongatapu and the cliffs of Eua. In Niue, head to any of the limestone cliffs that surround the island or Grand Terre in New Caledonia.



Tahiti

## OVERWATER VILLAS

The Pacific Islands offer some of the most unique overwater villas in the world. Imagine walking out onto your deck, descending the ladder and plunging straight into the turquoise lagoon. Relax with a cocktail and listen to the sound of the water gently lapping beneath you. Wake up each day to ocean views right on your doorstep. For a truly indulgent experience, stay in an overwater villa in Tahiti, New Caledonia, Vanuatu or Samoa.



Tahiti

## CULTURAL EXPERIENCE

South Pacific Islanders are proud of their traditional culture and way of life, making every visitor feel right at home with their bright smiles and warm hospitality. Watch on as boys jump into manhood from a towering platform on Pentecost Island in Vanuatu or be greeted by the local Tahitians as they welcome you to their 'slice of heaven'. In many parts of the South Pacific weekly cultural nights with fire performances, kava ceremonies and a traditional feast are a highlight.



Samoa



## SURFING

There are few experiences as exhilarating as surfing in the crystal-clear waters of the Pacific Islands. Surfing the Pacific is not for beginners – here you'll find some of the most challenging reef breaks with powerful waves and hollow barrels. The water is so clear and the sea life so plentiful that you can watch all the action beneath you, as you wait for the next set. For some of the best surfing spots, check out Tongatapu in Tonga, Savai'i and Upolu in Samoa and Efate in Vanuatu. For the biggest and best surf, visit between May and October.

## AQUATIC PLAYGROUND

Waterfalls, natural blowholes and coral reefs are all part of the wonder of the Pacific Islands. Swim in the clear water of the 'Moorea Lagoonarium' in Tahiti. Snorkel among the colourful coral in the 'Lagoons of New Caledonia'. Explore Tonga's turquoise pools and underwater caverns. On Niue, stand on Ana'ana Point and watch on as the surf is forced up through the Blowholes, jetting 30 metres into the air. For a unique adventure in Samoa, take a dip in the swimming holes that surround 'Togitogiga Falls'.



- Jump into a kayak and explore the crystal clear water off the coast of Bourail, New Caledonia



## TRACKS & WALKS

Dotted around each of the Pacific Islands are well sign-posted tracks and scenic walks. See the spectacular Talava Arches limestone formations and the extensive cave systems of Avaiki and Limu, as you hike around Niue. Walk high above the lush, tropical Falealupo rainforest on the Canopy Walkway in Samoa. For the more adventurous, climb to the top of Mount Yasar Volcano on Tanna Island in Vanuatu. From the safety of the crater rim, experience the fireworks of molten lava erupting day or night. It is most spectacular in the evening.

## ACTIVE ADVENTURES

For a rural adrenaline rush, head inland over the rough trails to Opunchu on an ATV quad bike in Tahiti. In Tonga, be guided through bush trails, villages, forests and plantations on similar vehicle. Take your breath away and whoosh through the treetops on a zipline experience in New Caledonia or Moorea's lush mountain terrain. For a quieter pace, explore spectacular tropical jungle and waterfalls on horseback in Vanuatu or jump onto a mountain bicycle or cruiser in Niue and cycle to numerous local attractions, remote beaches and swimming coves.

## SNORKELLING & DIVING

Snorkel and dive in the crystal clear water around each Pacific Island and discover the incredible, colourful coral reefs bursting with captivating marine life. Snorkel beneath the waves to explore the rich coral formations and plentiful sea life in Niue or dive the popular and incredible assortment of shipwreck sites in New Caledonia. Discover sea turtles, tuna, marlin and even Whale sharks in the oceans surrounding Tonga. Home to stunning reefs and diverse marine life, Vanuatu's teeming waters offer a perfect diving and snorkelling destination.



Vanuatu



Tonga



Samoa



## ISLAND HOPPING

There are countless numbers of smaller islands peppered throughout the Pacific. For a relaxing day out, why not head out to Fafa Island in Samoa. Enjoy a picnic and relax under a fale on a stretch of white sand beach. Join a day tour and visit Duck Island, Amedee Island or kayak between islands off the coast in New Caledonia. In Vanuatu, try Lelepa and Pele Island. However, if one day is not enough, why not stay a little longer. Consider the Isle of Pines, Ecapade Island and Ouvéa Island in New Caledonia or Iririki and Aore Islands in Vanuatu, just to name a few.



Samoa

## MARKETS & SHOPPING

Head to the markets for locally made souvenirs and handicrafts. While in Samoa, make your way to the Apia Markets for handcrafted wood carvings and brightly coloured sarongs. Visit the Port Vila fresh food markets in Vanuatu and check out the Friday night food markets in Alofi in Niue. Shop for black pearls at the Papeete Market in Tahiti and visit the Port Moselle Markets in Noumea. New Caledonia, Tahiti and Vanuatu have several shopping malls filled with fashion, souvenirs, curios and local food to suit all tastes.



Tahitian Black Pearls



Dive in and experience the rich marine life surrounding French Polynesia



To Sua Ocean Trench

## SAMOA

The 10 islands of Samoa could easily be your top 10 must see destinations of the Pacific Islands. Each of Samoa's islands offer something different. See rugged volcano peaks one day and sparkling lagoons with white sandy beaches the next.

### SEE

- Visit the Robert Louis Stevenson Museum and learn about the famous Scottish poet and author
- Watch on as water explodes, like a geyser, metres into the air from the powerful Alofaaga Blowholes

### DO

- Swim in the cool spring water of To Sua Ocean Trench, a large 30 metre-deep swimming hole surrounded by lush gardens
- Slide down the naturally formed smooth Papase'ea Sliding Rocks into cool swimming waterholes

### EAT & DRINK

- Take part in a cultural Fia Fia night including a buffet dinner of traditional Samoan food and entertainment
- Sample fresh local food at the Fugalei Fresh Produce Market in Apia

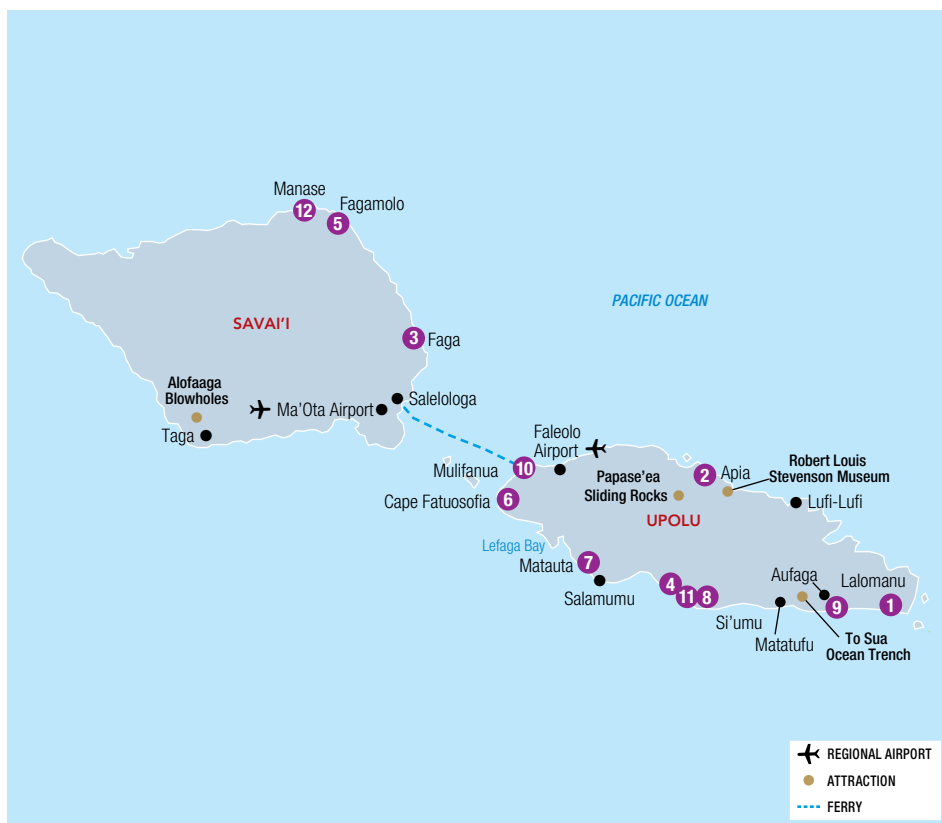
### WHAT'S ON

#### Independence Day

1 June

#### Teulia Festival

1 September



REF.	HOTELS	PAGE	REF.	HOTELS	PAGE
1	Aga Reef Resort ◆◆◆◆	18	2	The Samoan Outrigger Hotel ◆◆◇	16
2	Amanaki Hotel ◆◆◆	16	5	Savai'i Lagoon Resort ◆◆◆	23
3	Amoa Resort Savai'i ◆◆◆◆	23	9	Seabreeze Resort ◆◆◆◆◇	21
4	Coconuts Beach Club Resort & Spa ◆◆◆◆	19	2	Sheraton Samoa Aggie Grey's Hotel & Bungalows ◆◆◆◆◆	18
2	Insel Fehmann Hotel ◆◆◆	16	10	Sheraton Samoa Beach Resort ◆◆◆◆◆	22
5	Le Lagoto Resort ◆◆◆◇	23	11	Sinalei Reef Resort & Spa ◆◆◆◆◆◇	21
6	Le Vasa Resort ◆◆◆◆	19	12	Stevenson's at Manase ◆◆◆	23
1	Litia Sini Beach Resort ◆◆◆◇	18	2	Tanoa Tusitala Hotel ◆◆◆◆	16
7	Return to Paradise Resort & Spa ◆◆◆◆	20	2	Taumeasina Island Resort ◆◆◆◆	17
8	Saletoga Sands Resort & Spa ◆◆◆◆	20			



## AVIS CAR HIRE

Avis has a location at the Faleolo International Airport. Be met 24 hours a day, seven days a week at the airport for all pre-booked reservations or delivery of your rental car to your hotel can be organised.

### Includes:

- Unlimited kilometres • Loss Damage Waiver
- Taxes • Administration fee

### Does Not Include:

- Excess Reduction • One way rental fees
- Delivery/collection fees of non-Avis locations
- Fuel • Bond • Airport fee • Local driver licence

1 Apr 20 – 31 Mar 21	3-6 Days	7+ Days
Compact (Group B)	\$120* <sup>^</sup>	\$113* <sup>^</sup>
Intermediate (Group K)	\$135* <sup>^</sup>	\$120* <sup>^</sup>
Standard (Group L)	\$165* <sup>^</sup>	\$157* <sup>^</sup>

<sup>^</sup>Price valid per vehicle per day, based on 24 hour rental period. A credit card imprint is required when taking delivery of your vehicle to cover any additional cost. All hires are subject to Avis Samoa 20/21 rental terms and conditions.



## SAMOA AIRPORT TRANSFERS

Get your holiday off to a great start with a door to door private car transfer or shared coach transfer service.

Convenient transfers are available from Samoa's Faleolo International Airport to Apia accommodation and Mulifauna Wharf 24 hours a day, 7 days a week. Sit back, relax and be transferred in air-conditioned comfort.

Travel distance from Faleolo International Airport to the city is approximately 37 kilometres. Travel time depends on time of day and traffic.

Share Coach Per Person	Adult	Child 4-11 yrs
1 Apr 20 – 31 Mar 21		
Apia	\$32* <sup>^</sup>	\$16* <sup>^</sup>
Mulifauna Wharf	\$15* <sup>^</sup>	\$8* <sup>^</sup>

Private Vehicle Per Vehicle	1 to 4 People
1 Apr 20 – 31 Mar 21	
Apia	\$69* <sup>^</sup>
Mulifauna Wharf	\$69* <sup>^</sup>

<sup>^</sup>Price based on one way to/from Faleolo International Airport. Other destination and private vehicle transfer prices also available.



## FERRY TRANSFERS

Travel to Savai'i island on board the MV Lady Samoa III Ferry from Mulifanua Wharf, Upolu to Salelologa Wharf, Savai'i.

This ferry service has regular departures throughout the day, seven days a week. Travel time on the MV Lady Samoa III is approximately one hour and 15 minutes.

The VIP Passenger option on the MV Lady Samoa III allows you to have priority boarding while enjoying light refreshments and onboard entertainment. You will have access to the VIP, air-conditioned lounge as well as free Wi-Fi.

1 Apr 20 – 31 Mar 21	Adult	Child 2-12 yrs
Passenger	\$14* <sup>^</sup>	\$8* <sup>^</sup>
VIP Passenger	\$52* <sup>^</sup>	\$33* <sup>^</sup>

<sup>^</sup>Price based on one way from Mulifanua Wharf to/from Salelologa Wharf, Savai'i.



## HALF DAY APIA TOWNSHIP TOUR

Travel to Mulinu'u, the sacred burial grounds of the chiefly families of Samoa, Parliament House, Independence Monument, Lands and Titles Court, German Monument and the landing site of the first Catholic Missionary to Samoa. Continue to Moamoa Theological College to view a very old church with exquisite stained glass windows. The last stop is Robert Louis Stevenson's former home, now a museum, set in magnificent gardens and housing artefacts.

### Includes:

- Mulinu'u burial grounds
- Parliament House
- Robert Louis Stevenson museum
- Local guide
- Return transfers from Apia accommodation

**Duration:** 3 hours 30 minutes

**Departs:** Daily from Apia at 9:30am, 1:30pm

1 Apr 20 – 31 Mar 21	Adult	Child 4-11 yrs
	\$83*	\$42*



## ALEIPATA & TO SUA OCEAN TRENCH

Travel through rainforest and waterfalls from the north east coast of Upolu over the Le Mafa Pass to the south coast. Stop to view the To Sua Ocean Trench in Lotofaga Village with its natural deep swimming hole. See Papapapa Falls before arriving back to Apia.

### Includes:

- To Sua Ocean Trench
- Faofao Beach
- Papapapa Falls
- Lunch • Bottled water
- All admission fees
- Return transfers from Apia accommodation

**Duration:** 7 hours 30 minutes

**Departs:** Daily from Apia at 9:30am

1 Apr 20 – 31 Mar 21	Adult	Child 4-11 yrs
Plate Lunch	\$200*	\$100*
BBQ Lunch	\$220*	\$120*



## MANONO ISLAND

Manono Island is the legendary bali-hai. After departing Apia harbour, arrive at the island where a Samoan host family welcomes the group to their home. Take a walk through the family compound. Typical of a Samoan backyard is the plantation where staple food crops are grown. Stop at one of the beaches for lunch, a swim or just relax before returning to the terminal.

### Includes:

- Return boat transfers to Manono Island
- Samoan family compound
- Traditional villages
- Fresh fruit tasting
- Lunch • Local guide
- Return transfers from Apia accommodation

**Duration:** 6 hours 30 minutes

**Departs:** Daily from Apia at 9:30am

1 Apr 20 – 31 Mar 21	Adult	Child 4-11 yrs
Light Lunch	\$199*	\$100*
Plate Lunch	\$220*	\$110*

# APIA HOTELS

## THE SAMOAN OUTRIGGER HOTEL



Standard Room Shared Bathroom

Cross Island Road, Apia (APW)  
MAP PAGE 14 REF. 2

From **\$101\***

- ❖ Bar and billiards table lounge in an old colonial setting
- ❖ Daily cultural performances including traditional Samoan Kava ceremony
- ❖ Large tropical gardens surrounding outdoor pool

**Location:** Within walking distance of Apia township. Distances: Beach 1.5km, Town centre 2km, Faleolo Airport 31.6km.

**Property Features:** Bar, Pool, 24 hour reception, Guest lounge, Parking (free), Guest laundry, Barbecue area, 15 rooms.

**Room Features:** Wi-Fi (extra charge), Air-conditioning (except Standard Room Shared Bathroom), Fan (Standard Room Shared Bathroom), Tea/coffee making facilities (except Standard Room Shared Bathroom), Ironing facilities.

**Max Capacity:** Standard Room Shared Bathroom/Standard En suite – 3, Family En suite – 5, En suite with Air-conditioning – 2.

## AMANAKI HOTEL



Standard

Sogi Peninsula, Apia (APW)  
MAP PAGE 14 REF. 2

From **\$156\***

- ❖ Each room has a balcony with ocean views
  - ❖ Spacious modern light-filled rooms
  - ❖ Samoan Prime Minister's favourite spot for fish and chips
- Includes tropical breakfast daily.**

**Location:** On the peninsula and an easy walk to restaurants, cafés and shops in Apia. Distances: Beach 50m, Town centre 950m, Faleolo Airport 32km.

**Property Features:** Wi-Fi (common areas – extra charge), Pool, Restaurant, Bar, Guest laundry, Parking (free), 20 rooms.

**Room Features:** Wi-Fi (extra charge), Ocean views, Air-conditioning, Balcony, Tea/coffee making facilities.

**Max Capacity:** Standard – 2, Deluxe – 4.

## INSEL FEHMARN HOTEL



Garden View

Falealili Road, Apia (APW)  
MAP PAGE 14 REF. 2

From **\$156\***

- ❖ Interconnecting rooms are perfect for families
- ❖ Spacious rooms with kitchen facilities for self-catering
- ❖ Weekly island barbecue at Peleiupe Restaurant Bar and Terrace

**Includes breakfast daily.**

**Location:** A short drive from the Apia township and harbour. Distances: Beach 3km, Town centre 2.4km, Faleolo Airport 33km.

**Property Features:** Free Wi-Fi (common areas), Pool, Restaurant, Bar, Room service, Massage facilities, Tennis court, Children's playground, Guest laundry, Resort shop, Non smoking, 54 rooms.

**Room Features:** Wi-Fi (extra charge), Air-conditioning, Fan, Patio, Kitchen, In-room movies (free), Hair dryer.

**Max Capacity:** Garden View/Superior – 3 adults or 2 adults/2 children, Executive View/Premier – 2.

## TANOA TUSITALA HOTEL



Deluxe Double

Beach Road, Apia (APW)  
MAP PAGE 14 REF. 2

From **\$207\***

- ❖ Spacious rooms with a balcony or patio
- ❖ Two flood-lit tennis courts and a fitness centre
- ❖ Kids will love the pool and playground

**Includes full buffet breakfast daily.**

**Location:** Set on 15 acres of tropical gardens, just metres from Apia's waterfront and a few minutes' walk to the town centre. Distances: Beach 5km, Town centre 500m, Faleolo Airport 25km.

**Property Features:** Pools (2 – 1 outdoor, 1 children's), Restaurants (2), Bar, 24 hour room service, Day spa, Gym, Tennis courts (2), Nightly entertainment, Resort shop, 95 rooms.

**Room Features:** Air-conditioning, Balcony or patio, Tea/coffee making facilities, Cable TV, Ironing facilities, Hair dryer.

**Max Capacity:** Deluxe Double – 3 adults/2 children, Deluxe King – 3, Junior Suite – 2.





TAUMEASINA ISLAND RESORT



Beach Road, Apia (APW)  
MAP PAGE 14 REF. 2

From **\$381\***

- ❖ Two freshwater pools and an outdoor fitness circuit
- ❖ Private balcony and beachside dining options
- ❖ Fine dining restaurant at Sina's Restaurant
- ❖ An array of activities including cooking classes and weekly cultural shows available
- ❖ Soak up the Samoan sun on the resort's private white sandy beach
- ❖ Indulge in a selection of treatments at Fofo Spa and Sauna

**Includes full buffet breakfast daily.**

**Location:** Steps away from the beach with easy access to shopping and entertainment. Distances: Beachfront, Town centre 3.5km, Faleolo Airport 34km.

**Getting There:** Coach transfers from Faleolo Airport must be booked in conjunction with your accommodation. **\$57\*** per adult return. Child prices on application.

**Property Features:** Pools (2), Restaurants (2), Bars (2), Day spa, Wedding pavilion, Fitness centre, Use of snorkelling equipment, kayaks and catamarans, Children's playground, Tennis court, Boutique, Parking (free), Free shuttle bus to Apia, 105 rooms.

**Room Features:** Air-conditioning, Fan, Balcony, Tea/coffee making facilities, Kitchen (Villas), Laundry (Villas), Ironing facilities, Hair dryer, Safe.

**Max Capacity:** Oceanview King/Deluxe Oceanview King – 2, Oceanview Double/Deluxe Oceanview Double – 2 adults/2 children, 2 Bedroom Waterfront Villa – 5, 3 Bedroom Waterfront Villa – 7.



Oceanview King



\*Prices are a guide only, subject to change and availability and are in New Zealand Dollars. From prices for accommodation are per room per night for 2 people, unless otherwise specified and based on the lowest room category for travel in low season. Prices for tours and transfers are per person, unless otherwise specified. For full terms and conditions including pricing and conditions, refer to the Booking Conditions at the back of this brochure.

# APIA & UPOLU HOTELS

## SHERATON SAMOA AGGIE GREY'S HOTEL & BUNGALOWS



Classic



Main Beach Road, Apia (APW)  
MAP PAGE 14 REF. 2

From **\$324\***

- ❖ Modern rooms offering either garden, river or harbour views
  - ❖ Two large pools surrounded by tropical rock gardens
  - ❖ International heritage hotel within walking distance to downtown Apia
- Includes full buffet breakfast daily.**

**Location:** On the harbourfront in the centre of Apia and steps away from the Pacific Ocean. Distances: Beach 1km, Town centre 3km, Faleolo Airport 32km.

**Property Features:** Casino, Restaurants (2), Bar, Pools (2), Day spa, Gym, Guest lounge, Laundry service, Parking (free), 175 rooms.

**Room Features:** Air-conditioning, Balcony, Tea/coffee making facilities, Mini bar, In-room movies (pay per view), Cable TV, Ironing facilities, Safe.

**Max Capacity:** Classic/Harbour – 3 adults or 2 adults/2 children, Superior/Bungalow – 2, Bungalow Suite – 3, Family – 4.



## LITIA SINI BEACH RESORT



Lalomanu, Upolu (APW)  
MAP PAGE 14 REF. 1

From **\$199\*^**

- ❖ Modern yet traditional Samoan fales just steps from the beach
- ❖ Beachfront family bungalows sleep up to five people
- ❖ Unique and intimate family-run accommodation

**Includes breakfast and dinner daily.**

**Location:** At the south-eastern tip of Upolu Island, perched on white sand. Distances: Beachfront, Town centre 60km, Faleolo Airport 81.2km.

**Property Features:** Wi-Fi (common areas – extra charge), 24 hour reception, Resort shop, Restaurant, Bar, Massage facilities, Evening entertainment, Use of snorkelling equipment, 16 rooms.

**Room Features:** Wi-Fi (extra charge), Ocean views, Balcony, Fan, Shared bathroom facilities, Ironing facilities.

**Max Capacity:** Garden Beach Fale/Beachfront Fale – 4, Beachfront Oceanview Family – 5.

**^Minimum 3 night stay applies.**

## AGA REEF RESORT



Oceanbreeze

Lalomanu, Upolu (APW)  
MAP PAGE 14 REF. 1

From **\$365\***

- ❖ Multi-awarding winning resort offering stunning lagoon views
- ❖ A stylish mix of private waterfront villas and comfortable hotel rooms
- ❖ Natural ocean lagoon is steps away and perfect for snorkelling

**Includes à la carte breakfast daily and 10 minute massage per person per stay.**

**Location:** Sits between a mountain backdrop and the ocean. Distances: Beachfront, Town centre 60km, Faleolo Airport 83km.

**Getting There:** Coach transfers from Faleolo Airport must be booked in conjunction with your accommodation. **\$63\*** per person one way.

**Property Features:** Wi-Fi (common areas – extra charge), Pools (2 – infinity/saltwater), Restaurant, Bar, Day spa, Use of snorkelling equipment and kayaks, Sun loungers, Bicycle hire, 16 rooms.

**Room Features:** Air-conditioning, Balcony, Tea/coffee making facilities, Cable TV, Hair dryer.

**Max Capacity:** Oceanbreeze/VIP Villa – 2, Waterfront/Island Villa – 3.



COCONUTS BEACH CLUB RESORT & SPA



Treehouse Suite

South Coast Road, Upolu (APW)  
MAP PAGE 14 REF. 4

From \$660\*<sup>^</sup>

- ❖ The only overwater fales in Samoa
- ❖ Unique overwater deck structure with sun beds
- ❖ Day spa with outdoor granite soaking tubs

**Includes choice of light breakfast daily or mini bar replenished daily.**

**Location:** On the southern coast of Upolu on a white sand beach. Distances: Beachfront, Town centre 23km, Faleolo Airport 31km.

**Getting There:** Coach transfers from Faleolo Airport must be booked in conjunction with your accommodation. \$47\* per person one way.

**Property Features:** Pool, Restaurant, Bars (2), Day spa, Use of non-motorised watersports, Activities centre, Cultural entertainment, Resort shop, Laundry service, Parking (free), 26 rooms.

**Room Features:** Air-conditioning, Fan, Tea/coffee making facilities, Hair dryer, Safe.

**Max Capacity:** Treehouse Suite/1 Bedroom Beach Fale/Villa Pule/Villa Ali'i/Over Water Fale – 3, Coco Suite – 4, 2 Bedroom Beach Fale/Villa Matai – 5.

<sup>^</sup>Minimum 3 night stay applies.



LE VASA RESORT



Lagoon Water Fale

Cape Fatuosofia, Upolu (APW)  
MAP PAGE 14 REF. 6

From \$332\*

- ❖ Authentic Oceanfront Samoan resort experience
- ❖ Surrounded by lush tropical gardens and stunning ocean views
- ❖ Enjoy oceanside dining offering locally sourced Samoan dishes

**Includes light breakfast daily.**

**Location:** Close to Mulifanua Wharf, set among lush tropical gardens. Distances: Beachfront, Town centre 42km, Faleolo Airport 9km.

**Getting There:** Coach transfers from Faleolo Airport must be booked in conjunction with your accommodation. \$47\* per person one way.

**Property Features:** Wi-Fi (common areas – extra charge), Pool, Restaurant, Bar, Room service, Use of kayaks, snorkelling equipment, pedal boats, stand-up paddle boards, fishing equipment and bicycles, Games room, Gift shop, 16 rooms.

**Room Features:** Wi-Fi (extra charge), Ocean views, Air-conditioning, Fan, Balcony, Mini bar, Tea/coffee making facilities, Docking station, Bathrobes, Hair dryer, Safe.

**Max Capacity:** Lagoon Water Fale/Superior Oceanfront – 4.



\*Prices are a guide only, subject to change and availability and are in New Zealand Dollars. From prices for accommodation are per room per night for 2 people, unless otherwise specified and based on the lowest room category for travel in low season. Prices for tours and transfers are per person, unless otherwise specified. For full terms and conditions including pricing and conditions, refer to the Booking Conditions at the back of this brochure.

# UPOLU HOTELS

## RETURN TO PARADISE RESORT & SPA



Ocean Breeze

Matautu-Lefaga, Upolu (APW)  
MAP PAGE 14 REF. 7

From **\$300\***

- ❖ Traditional Samoan massages at the day spa
- ❖ Surrounded by mineral pools, private forest and gardens
- ❖ Samoa Tourism Excellence Awards 2019 – Overall Winner

**Includes tropical breakfast daily.**

**Location:** On the south coast of Upolu, steps away from the beach. Distances: Beachfront, Faleolo Airport 23.6km.

**Getting There:** Coach transfers from Faleolo Airport must be booked in conjunction with your accommodation. **\$42\*** per adult one way. Child prices on application.

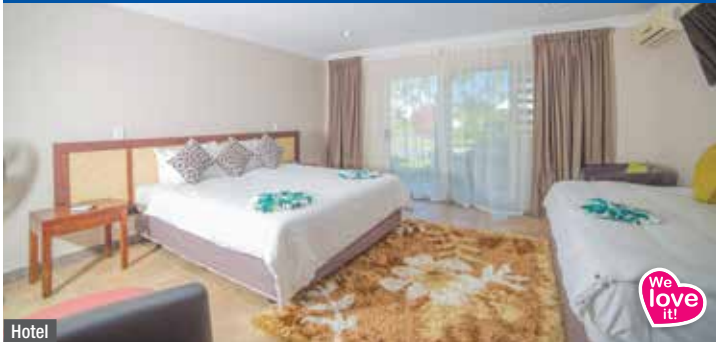
**Property Features:** Wi-Fi (common areas – extra charge), Pools (4), Chapel, Restaurants (2), Bar, Room service, SPAradise Day Spa, Outdoor gym, Use of snorkelling equipment, Bicycle hire, Resort shop, Library, Laundry service, Guest lounge, 24 hour reception, Shuttle bus to Apia (extra charge, conditions apply), 85 rooms.

**Room Features:** Wi-Fi (extra charge), Air-conditioning, Balcony or patio, Tea/coffee making facilities, Mini bar, Docking station, Ironing facilities, Hair dryer, Safe.

**Max Capacity:** Ocean Breeze/Beachfront Deluxe Suite – 3 adults or 2 adults/2 children.



## SALETOGA SANDS RESORT & SPA



Hotel

Matatufu, Upolu (APW)  
MAP PAGE 14 REF. 8

From **\$225\***

- ❖ Families will love the waterpark activities and kids program
- ❖ Enjoy a refreshing cocktail from the swim-up or overwater landing bar
- ❖ Villas with private outdoor showers, some with private outdoor bathtubs

**Includes light breakfast daily and 2 lava lavas (sarongs) in room on arrival.**

**Location:** On the beach and surrounded by greenery, offering breathtaking views. Distances: Beachfront, Faleolo Airport 69km.

**Getting There:** Coach transfers from Faleolo Airport must be booked in conjunction with your accommodation. **\$42\*** per adult one way. Child prices on application.

**Property Features:** Wi-Fi (common areas – extra charge), Pool (lagoon), Chapel, Restaurants (2), Bars (4), Waterpark, Day spa, Use of snorkelling equipment and non-motorised watersports, Gym, 58 rooms.

**Room Features:** Wi-Fi (extra charge), Air-conditioning, Balcony, Tea/coffee making facilities, DVD player.

**Max Capacity:** Hotel/Lagoon View Bungalow/Deluxe Villa/Beachfront Villa – 3, Deluxe/Executive Hotel – 4. Family Bungalow/Family Villa – 5.



\* Prices are a guide only, subject to change and availability and are in New Zealand Dollars. From prices for accommodation are per room per night for 2 people, unless otherwise specified and based on the lowest room category for travel in low season. Prices for tours and transfers are per person, unless otherwise specified. For full terms and conditions including pricing and conditions, refer to the Booking Conditions at the back of this brochure.

SEABREEZE RESORT



Ocean View Villa

Paradise Cove, Aufaga, Upolu (APW)  
MAP PAGE 14 REF. 9

From **\$444** \*^

- ◆ Adults only resort on a private beach
- ◆ Infinity pool, glass bottom kayaks and double hammocks
- ◆ Waterfront Restaurant and Bar is situated on the water

**Includes full breakfast daily, mini bar replenished daily and cultural afternoons on Fridays.**

**Location:** Located in a private secluded bay. Distances: Beachfront, Faleolo Airport 75km.

**Getting There:** Coach transfers from Faleolo Airport must be booked in conjunction with your accommodation. **\$67\*** per person one way.

**Property Features:** Wi-Fi (common areas – extra charge), Pool, Restaurant, Bars (2), Room service, Massage facilities, Use of kayaks and snorkelling equipment, Resort shop, Laundry service, Library, 12 rooms.

**Room Features:** Ocean views, Air-conditioning, Fan, Balcony, Tea/coffee making facilities, Ironing facilities, Hair dryer, Bathrobes, Safe, All rooms non smoking.

**Max Capacity:** Ocean View Villa/Beachfront Villa/Honeymoon Point House – 2, Deluxe Ocean View Villa – 3, Ocean View Suite – 4.

^ Minimum 3 night stay applies.



SINALEI REEF RESORT & SPA



Traditional Garden View Villa

Si'umu, Upolu (APW)  
MAP PAGE 14 REF. 11

From **\$501** \*

- ◆ Adults only boutique resort sitting in a sheltered lagoon
- ◆ Waterfront spa resort with four treatment villas by the ocean
- ◆ A mix of modern and rustic luxury combined with raw untouched beauty

**Includes tropical breakfast and afternoon tea daily, 15 minute head and shoulder massage per person and welcome drink on arrival.**

**Location:** An island paradise on the southern side of Upolu. Distances: Beachfront, Faleolo Airport 38km.

**Getting There:** Coach transfers from Faleolo Airport must be booked in conjunction with your accommodation. **\$58\*** per person one way.

**Property Features:** Wi-Fi (common areas – extra charge), Pool, Restaurants (2), Bar, Day spa, Use of golf course (9 hole), tennis court, snorkelling equipment and kayaks, Evening entertainment, 29 rooms.

**Room Features:** Air-conditioning, Fan, Balcony or patio, Tea/coffee making facilities, Ironing facilities, Hair dryer, All rooms non smoking.

**Max Capacity:** Traditional Garden View Villa/Traditional Ocean View Villa/Superior Ocean View Villa/Superior Garden View Villa – 3.



\* Prices are a guide only, subject to change and availability and are in New Zealand Dollars. From prices for accommodation are per room per night for 2 people, unless otherwise specified and based on the lowest room category for travel in low season. Prices for tours and transfers are per person, unless otherwise specified. For full terms and conditions including pricing and conditions, refer to the Booking Conditions at the back of this brochure.

# UPOLU HOTELS

## SHERATON SAMOA BEACH RESORT



Mulifanua, Upolu (APW)  
MAP PAGE 14 REF. 9

From **\$342\***

- ❖ Weekly Polynesian fire dancing performance
- ❖ Four restaurants and bars, including a swim-up bar
- ❖ Private white sand beach just steps away
- ❖ Secluded location – perfect for honeymooners and couples
- ❖ Tastefully designed rooms and suites with ocean views
- ❖ Tropical lagoon style pool surrounded by immaculate gardens

**Includes full buffet breakfast daily.**

**Location:** On the lagoon side of Upolu offering a relaxing tropical oasis. Distances: Beachfront, Faleolo Airport 5km.

**Property Features:** Pool (lagoon), Restaurants (3), Bars (3 – 1 swim-up), 24 hour room service, Kids club 4-12 years (extra charge), Mania Polynesian Spa (day spa), Gym, Spa, Sauna, Tennis courts (2), Watersports centre, Resort shop, Barbecue area, Laundry service, 24 hour reception, 133 rooms.

**Room Features:** Air-conditioning, Balcony or patio, Ocean views, Tea/coffee making facilities, In-room movies (pay to view), Ironing facilities, Hair dryer, Safe.

**Max Capacity:** Deluxe Ocean View/Executive 1 Bedroom Suite/Deluxe 1 Bedroom Suite – 3 adults or 2 adults/2 children.



Deluxe Ocean View



Deluxe 1 Bedroom Suite



\*Prices are a guide only, subject to change and availability and are in New Zealand Dollars. From prices for accommodation are per room per night for 2 people, unless otherwise specified and based on the lowest room category for travel in low season. Prices for tours and transfers are per person, unless otherwise specified. For full terms and conditions including pricing and conditions, refer to the Booking Conditions at the back of this brochure.

SAVAI'I LAGOON RESORT



Garden Bungalow Seaview



Fagamalo, Savai'i (MXS)  
MAP PAGE 14 REF. 5

From **\$210**\*<sup>^</sup>

- ❖ Bar and restaurant situated on the beach
- ❖ All rooms are steps from the beach with ocean views
- ❖ Shower under the stars in the enclosed outdoor en suite

**Includes tropical breakfast daily.**

**Location:** In Fagamalo village. Distances: Beachfront, Salelologa Wharf 48km.  
**Getting There:** Coach transfers from Faleolo Airport must be booked in conjunction with your accommodation. **\$60\*** per person one way.  
**Property Features:** Wi-Fi (common areas – extra charge), Restaurant, Bar, Café, Use of kayaks, Laundry service, Parking (free), 10 rooms.  
**Room Features:** Wi-Fi (extra charge), Fan, Outdoor shower, Limited cooking facilities with microwave, Tea/coffee making facilities, Filtered water, Ironing facilities, Safe.  
**Max Capacity:** Garden Bungalow Seaview – 2, Separate Bedroom Bungalow – 3 adults/ 2 children. Other room types also available.  
<sup>^</sup>Minimum 2 night stay applies.



LE LAGOTO RESORT



Oceanview Bungalow

Fagamalo, Savai'i (MXS)  
MAP PAGE 14 REF. 5

From **\$403**\*<sup>^</sup>

- ❖ Bungalows sit in gardens just steps from the private beach
- ❖ Weekly themed buffet, cultural show and Polynesian barbecue
- ❖ Poolside bar with daily happy hour cocktail specials

**Includes tropical breakfast daily and two 15 minute massages per booking.**

**Location:** On the coast near Fagamalo Village on the northern tip of Savai'i. Distances: Beachfront, Salelologa Wharf 48km.  
**Getting There:** Coach transfers from Faleolo Airport must be booked in conjunction with your accommodation. Ask your travel agent for details.  
**Property Features:** Wi-Fi (common areas – extra charge), Pool, Restaurant, Bar, Sunset Spa (day spa), Use of kayaks and paddle boards, Evening entertainment, Laundry (extra charge), Parking (free), 10 rooms.  
**Room Features:** Wi-Fi (extra charge), Ocean views, Air-conditioning, Patio, Tea/coffee making facilities, Ironing facilities, Hair dryer, Safe, All rooms non smoking.  
**Max Capacity:** Oceanview Bungalow/Beachfront Bungalow – 4.  
<sup>^</sup>Minimum 2 night stay applies.



STEVENSON'S AT MANASE



Villa

Manase Village, Savai'i (MXS)  
MAP PAGE 14 REF. 12

From **\$222**\*<sup>^</sup>

- ❖ Beach bar and Brasserie overlooks the lagoon and beyond
- ❖ Beach villas with interconnecting doors
- ❖ Suites with a bar and a forest-themed washroom with rock shower

**Includes full breakfast daily.**

**Location:** On a beach on the north coast of Savai'i. Distances: Beachfront, Salelologa Wharf 45km.  
**Getting There:** Coach transfers from Faleolo Airport must be booked in conjunction with your accommodation. Ask your travel agent for details.  
**Property Features:** Wi-Fi (common areas – extra charge), Pool, Restaurant, Brasserie, Beach bar and deck, Use of paddle boards and kayaks, Cultural activities, Evening entertainment, 21 rooms.  
**Room Features:** Air-conditioning (except Euro Fale), Fan, Balcony or patio, Tea/coffee making facilities.  
**Max Capacity:** Villa/Euro Fale – 3, Jasmine/Nikolai/Amelia/Joshua/Judicial Suite – 5, Isabella Suite – 2.



AMOEA RESORT SAVA'I



Deluxe Bungalow

North Coast Road Faga, Savai'i (MXS)  
MAP PAGE 14 REF. 3

From **\$292**\*<sup>^</sup>

- ❖ Restaurant and coffee shop feature nouveau Samoan cuisine
- ❖ All rooms feature a large patio and open-air shower
- ❖ Water's Edge Bungalows are centred around the pool

**Includes light breakfast daily.**

**Location:** Across the road from one of Samoa's many lagoons. Distances: Lagoon 50m, Salelologa Wharf 10km.  
**Getting There:** Coach transfers from Faleolo Airport must be booked in conjunction with your accommodation. Ask your travel agent for details.  
**Property Features:** Wi-Fi (common areas – extra charge), Pool, Restaurant, Swim-up bar, Use of snorkelling equipment and kayaks (extra charge), Guest lounge, 15 rooms.  
**Room Features:** Air-conditioning, Patio, Tea/coffee making facilities, Private outdoor showers, Hair dryer (Water's Edge Bungalow).  
**Max Capacity:** Deluxe Bungalow/Garden Bungalow Seaview/Superior Beach Bungalow/ Super Water's Edge Bungalow – 3. Other room types also available.  
<sup>^</sup>Minimum 2 night stay applies.



\*Prices are a guide only, subject to change and availability and are in New Zealand Dollars. From prices for accommodation are per room per night for 2 people, unless otherwise specified and based on the lowest room category for travel in low season. Prices for tours and transfers are per person, unless otherwise specified. For full terms and conditions including pricing and conditions, refer to the Booking Conditions at the back of this brochure.



Le Méridien, Bora Bora

## TAHITI

With more than 118 islands spread across 5 archipelagos, Tahiti evokes a sense of romance, escapism and indulgence. The picturesque islands of Bora Bora and Moorea have some of the world's most beautiful lagoons, with crystal-clear warm water and pure white sand, surrounded by dramatic green mountain peaks.

### SEE

- See a large array of manta rays and reef sharks in the clear turquoise waters of Bora Bora
- Sit back and enjoy a traditional Polynesian Dance Show set to a thunderous drum beat

### DO

- For the ultimate treat, shop for an elegant black Tahitian pearl
- Dive straight from the deck of your overwater bungalow into the azure waters below

### EAT & DRINK

- Indulge in Poisson Cru, Tahiti's national dish, fresh tuna marinated in lime juice and coconut milk
- Try Firi Firi for a snack on the run – Tahitian donuts dipped in coffee

### WHAT'S ON

#### Bastille Day Celebrations

14 July

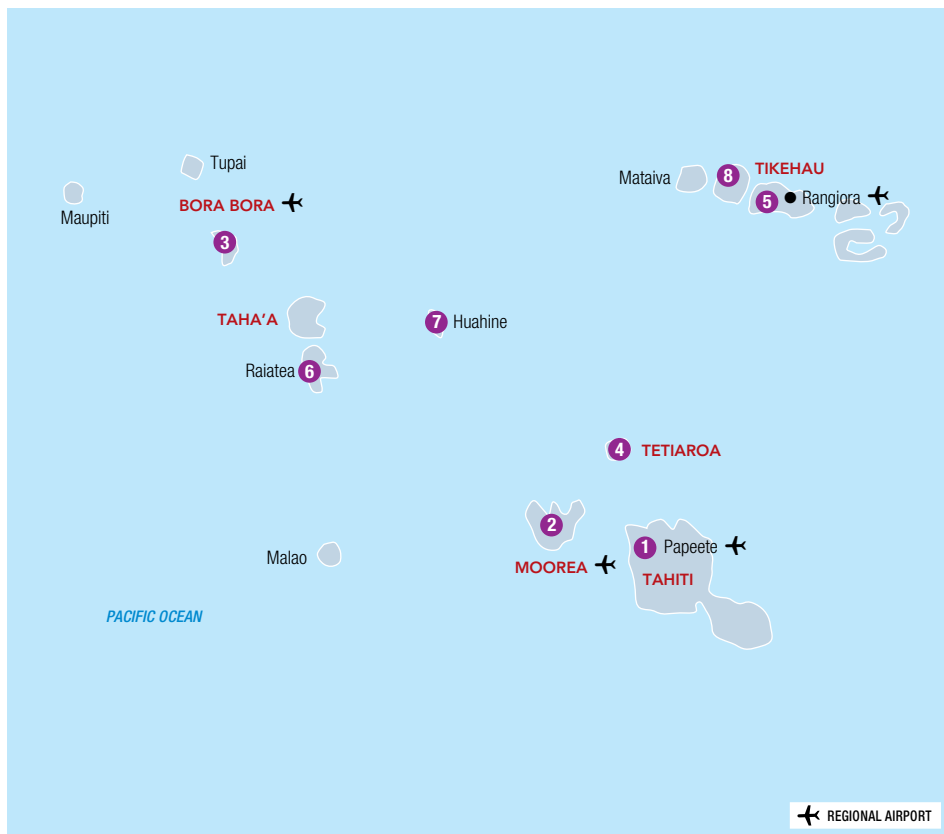
#### Gospel Day

5 March

### TRANSFERS

#### Faa'a Airport to/from Papeete one way (8km):

By coach: **\$34\*** per adult, **\$17\*** per child (2-11 yrs) By private vehicle: **\$114\*** (1 to 2 people), **\$163\*** (3 to 6 people).



REF.	HOTELS	PAGE
<b>PAPEETE</b>		
1	InterContinental Tahiti Resort & Spa ◆◆◆◆	26
1	Manava Suite Resort Tahiti ◆◆◆◆	26
1	Tahiti la Ora Beach Resort managed by Sofitel ◆◆◆◆◇	26
1	Tahiti Pearl Beach Resort and Spa ◆◆◆◆◇	27
<b>MOOREA</b>		
2	Hilton Moorea Lagoon Resort & Spa ◆◆◆◆◆	28
2	InterContinental Moorea Resort & Spa ◆◆◆◆	27
2	Manava Beach Resort & Spa Moorea ◆◆◆◆	28
2	Sofitel Moorea la Ora Beach Resort ◆◆◆◆◆	27
<b>BORA BORA</b>		
3	Conrad Bora Bora Nui ◆◆◆◆◆	30
3	Four Seasons Bora Bora ◆◆◆◆◆	30

REF.	HOTELS	PAGE
3	InterContinental Bora Bora Le Moana Resort ◆◆◆◆	29
3	InterContinental Bora Bora Resort & Thalasso Spa ◆◆◆◆◆	31
3	Le Maitai Polynesia Bora Bora ◆◆◆	29
3	Le Méridien Bora Bora ◆◆◆◆◆	32
3	Sofitel Bora Bora Marara Beach Resort ◆◆◆◆	29
3	Sofitel Bora Bora Private Island ◆◆◆◆◇	30
3	The St. Regis Bora Bora Resort ◆◆◆◆◆	31
<b>OUTER ISLANDS</b>		
4	The Brando ◆◆◆◆◆	33
5	Kia Ora Resort & Spa ◆◆◆◆◇	32
6	Le Taha'a Island Resort & Spa ◆◆◆◆◆	33
7	Royal Huahine ◆◆◆◆	32
8	Tikehau Pearl Beach Resort ◆◆◆◆	32

\*Prices are a guide only, subject to change and availability and are in New Zealand Dollars. From prices for accommodation are per room per night for 2 people, unless otherwise specified and based on the lowest room category for travel in low season. Prices for tours and transfers are per person, unless otherwise specified. For full terms and conditions including pricing and conditions, refer to the Booking Conditions at the back of this brochure.





## TAHITI CIRCLE ISLAND TOUR

See the natural beauty and learn the history of Tahiti on this half day tour. Travel aboard an air-conditioned vehicle with a local guide as you circle the 114 kilometre road around Tahiti. Visit landmarks like One Tree Hill, Point Venus, Blowhole, Faarumai Waterfall, Water Gardens Vaipahi and waterfall and the Maraa Fern Grotto.

### Includes:

- 4 hour island tour
- Air-conditioned vehicle
- Expert guide
- Return transfers from selected Papeete accommodation

**Duration:** 4 hours

**Departs:** Daily from Papeete at 9am, 1pm

	Adult	Child 2-11 yrs
1 Apr 20 – 31 Mar 21	<b>\$91*</b>	<b>\$46*</b>



## TAHITI 4WD MOUNTAIN SAFARI

Travel by 4WD around the scenic east coast of Tahiti and the famous Papenoo Valley. Stop at One Tree Hill with a fabulous view of Matavai Bay. Continue inland to the mouth of Papenoo River and begin the ascent up the largest valley on the island. Take in the awe-inspiring view of the surrounding mountainsides carved by centuries of erosion covered with rich green rainforest. Enjoy the adventurous drive of crossing rivers with many photo stops of the numerous waterfalls.

### Includes:

- 4 hour mountain safari tour
- Air-conditioned 4WD vehicle
- Expert guide
- Return transfers from selected Papeete accommodation

**Duration:** 4 hours

**Departs:** Daily from Papeete at 9am, 1pm

	Adult	Child 2-11 yrs
1 Apr 20 – 31 Mar 21	<b>\$116*</b>	<b>\$58*</b>



## MOOREA ATV QUAD FUN TOUR

Explore beautiful Moorea on ATV quad bikes. Discover Cook's Bay and then drive through the Paopao Valley along the island ring road. Pass through pineapple fields before arriving at 'Le Belvédère' Lookout for amazing views of Cook's Bay and Opunohu Bay. Continue to the interior trails of Opunohu and stop at the school of agriculture. Here, discover various tropical plants, flowers and fruits, native to French Polynesia. Take the opportunity to climb 91 metres to the summit of Magic Mountain for stunning views of Moorea's north shore.

### Includes:

- Use of quad bike
- Fruit tastings • Expert guide
- Return transfers from selected Moorea accommodation

**Duration:** 3 hours 30 minutes

**Departs:** Daily from Moorea at 9am, 1:30pm

**Not suitable for children under 18 yrs.**

	Adult
1 Apr 20 – 31 Mar 21	<b>\$320*</b>



## 4WD SAFARI EXCURSION

Discover the beautiful volcanic island of Moorea on this half day 4WD tour. Visit the pineapple fields, bamboo groves and orange, grapefruit, papaya and vanilla plantations. Enjoy the breathtaking view from the Belvedere Lookout point and pay a visit to the archaeological sites and temples of pre-contact Polynesia. Ascend Magic Mountain, where you can opt to hike 91 metres to the summit for a stunning view of Moorea's north shore. Sample local liqueurs and fruit juices at the fruit juice plant and distillery and stop at one of the local pearl stores.

### Includes:

- 4 hour 4WD Safari tour
- Fruit juice and liqueur tasting
- Return transfers from selected Moorea accommodation

**Duration:** 4 hours

**Departs:** Mon to Sat from Moorea at 8am

	Adult	Child 3-12 yrs
1 Apr 20 – 31 Mar 21	<b>\$77*</b>	<b>\$39*</b>



## FUN & ROMANCE PRIVATE TOUR

Enjoy fun and romance on this adventure of a lifetime. Step aboard your 25 foot Cap Camarat (speed boat) and let your knowledgeable captain take you to the best snorkelling spots in Bora Bora, while learning a little history of this stunning destination.

Navigate the calm waters of the lagoon as you share romantic moments, amid the turquoise waters. Snorkel the beautiful coral gardens and marvel at the abundant marine life.

### Includes:

- 3 hour private speed boat cruise
- Use of snorkelling equipment
- Expert guide
- Return transfers from selected Bora Bora accommodation

**Duration:** 3 hours

**Departs:** Daily from Bora Bora on demand

	Adult
1 Apr 20 – 31 Mar 21	<b>\$892*</b>



## SHARK & STINGRAY SNORKEL SAFARI

Experience the thrill of snorkelling in Bora Bora with black-tip reef sharks, stingrays and tropical fish on this two and a half hour safari.

Slip into the crystal clear underwater world to watch these fascinating creatures, or observe them from the boat. Discover many marine wonders near the barrier reef in the Bora Bora lagoon.

### Includes:

- Use of snorkelling equipment
- Expert guide
- Return transfers from selected Bora Bora accommodation

**Duration:** 2 hours 30 minutes

**Departs:** Mon to Sat from Bora Bora at 9am, 1pm

	Adult	Child 3-12 yrs
1 Apr 20 – 31 Mar 21	<b>\$136*</b>	<b>\$68*</b>

\*Prices are a guide only, subject to change and availability and are in New Zealand Dollars. From prices for accommodation are per room per night for 2 people, unless otherwise specified and based on the lowest room category for travel in low season. Prices for tours and transfers are per person, unless otherwise specified. For full terms and conditions including pricing and conditions, refer to the Booking Conditions at the back of this brochure.

# PAPEETE HOTELS

## MANAVA SUITE RESORT TAHITI



Standard

Puna'auia, Tahiti (PPT)  
MAP PAGE 24 REF. 1

From **\$468**<sup>\*^</sup>

- ❖ Spacious, modern architecturally designed rooms
- ❖ One of the largest infinity pools in the Pacific
- ❖ Taxi boat regularly travels between the resort and Papeete

**Location:** Overlooks the lagoon and nearby island of Moorea. Distances: Beachfront, Papeete Market 10km, Faa'a Airport 3km.

**Property Features:** Pool (infinity), Restaurants (2), Bars (2), Room service, Manea Spa (day spa), Fitness centre, Resort shop, Laundry service, 24 hour reception, 121 rooms.

**Room Features:** Air-conditioning, Fan, Balcony (except Standard), Tea/coffee making facilities, Limited cooking facilities (except Standard), Mini bar, DVD player, Cable TV.

**Max Capacity:** Standard – 2, Garden Studio/Lagoon Studio – 3, Garden Suite/Lagoon Suite – 4.

<sup>^</sup>Price includes XPF150 local city tax per person per night and a resort fee of XPF1500 per room per night to be paid directly to the hotel by you.



## INTERCONTINENTAL TAHITI RESORT & SPA



Standard

Pointe Tata'a, Faa'a (PPT)  
MAP PAGE 24 REF. 1

From **\$643**<sup>\*^</sup>

- ❖ Fine dining and world-class dinner shows
- ❖ Overwater suites with thatched rooves, perfect for couples
- ❖ Deep Nature Spa with signature treatments

**Location:** Set on 32 acres of tropical gardens alongside the lagoon. Distances: Beachfront, Papeete Market 8.2km, Faa'a Airport 2km.

**Property Features:** Pools (3), Restaurants (2), Bars (2), 24 hour room service, Use of snorkelling equipment and kayaks, Day spa, Tennis courts (2), Guest laundry, Parking (free), 24 hour reception, 245 rooms.

**Room Features:** Air-conditioning, Balcony, Tea/coffee making facilities, Cable TV, Ironing facilities, Hair dryer, Safe.

**Max Capacity:** Standard/Garden View/Lagoon View/Antares Panoramic Suite/Motu Overwater Bungalow/Superior Garden/Superior Lagoon/Panoramic Garden (King)/Panoramic Lagoon Room (King) – 2.

<sup>^</sup>Price includes XPF150 local city tax per person per night to be paid directly to the hotel by you.



## TAHITI LA ORA BEACH RESORT MANAGED BY SOFITEL



Superior Garden

Puna'auia, Tahiti (PPT)  
MAP PAGE 24 REF. 1

From **\$576**<sup>\*^</sup>

- ❖ Sand-bottom pool leading to the only white sand beach on the island
- ❖ Large, bright rooms with garden or lagoon views
- ❖ Use of tennis courts, beach volleyball and kayaks

**Includes full breakfast daily and mini bar replenished daily.**

**Location:** On one of the most beautiful beaches in Tahiti. Distances: Beachfront, Papeete Market 14.6km, Faa'a Airport 10km.

**Property Features:** Pool (infinity), Restaurants (2), Bars (2), Room service, Manea Spa (day spa), Fitness centre, Resort shop, Laundry service, 24 hour reception, 146 rooms.

**Room Features:** Air-conditioning, Fan, Balcony, Tea/coffee making facilities, Limited cooking facilities (except Standard), Mini bar, DVD player, Cable TV.

**Max Capacity:** Superior Garden/Luxury Garden/Luxury Panoramic/Junior Suite/Prestige Suite/Presidential Suite – 3, Luxury Overwater – 2 adults/1 child, Luxury Garden Family – 2 adults/2 children.

<sup>^</sup>Price includes XPF150 local city tax per person per night to be paid directly to the hotel by you.



**TAHITI PEARL BEACH RESORT AND SPA**



Deluxe Ocean View



Lafayette Beach, Tahiti (PPT)  
MAP PAGE 24 REF. 1

From **\$587**\*^

- Great location in Matavai Bay with free shuttle to nearby Papeete
- Daily local arts and crafts market
- All spacious rooms with private balconies overlook Lafayette Beach

**Location:** In a tranquil setting and offers a memorable getaway. Distances: Beachfront, Papeete Market 7.7km, Faa'a Airport 12km.

**Property Features:** Pool, Spa, Restaurant, Bar, Room service, Day spa, Fitness centre, Yoga, Water aerobics, 91 rooms.

**Room Features:** Ocean views, Air-conditioning, Balcony, Room service, Mini bar, Tea/coffee making facilities, Cable TV, Hair dryer, Safe.

**Max Capacity:** Deluxe Ocean View/Ocean Jacuzzi/Premium Deluxe Ocean/Premium Ocean Jacuzzi – 2, Ocean View Suite/Premium Ocean Suite – 4.

^Price includes XPF150 local city tax per person per night and a resort fee of XPF1652 per room per night to be paid directly to the hotel by you.



**SOFITEL MOOREA LA ORA BEACH RESORT**



Luxury Garden



Maharepa, Moorea (MOZ)  
MAP PAGE 24 REF. 2

From **\$829**\*^

- Luxurious bungalows built either on sand, in gardens or overwater
  - World-class cuisine prepared by Chef Lintanf Marc
  - Le Jardin Spa and Beauty is tucked away in a tropical garden
- Includes full breakfast daily and mini bar replenished daily.**

**Location:** On the beach of Moorea with views of the lagoon. Distances: Beachfront, Moorea Airport 1.4km, Port of Vaiare 3.2km.

**Property Features:** Pool (infinity), Restaurants (2), Bars (2), Room service, Day spa, Watersports and activities centre, Bicycle hire, Guest laundry, 112 rooms.

**Room Features:** Air-conditioning, Fan, Tea/coffee making facilities, Mini bar, Coffee pod machine, Cable TV, Hair dryer, Safe.

**Max Capacity:** Luxury Garden/Superior Ocean View/Luxury Beachfront/Superior Overwater – 3, Superior Horizon Overwater/Luxury Overwater/Luxury Horizon Overwater – 2.

^Price includes XPF200 local city tax per person per night to be paid directly to the hotel by you.



**INTERCONTINENTAL MOOREA RESORT & SPA**



Lanai Room



Papetoai, Moorea (MOZ)  
MAP PAGE 24 REF. 2

From **\$693**\*^

- All suites have separate sitting rooms and terrace
- Garden bungalows feature a private plunge pool
- Two large infinity pools with lagoon and mountain views

**Includes full breakfast daily.**

**Location:** Between mountains and a lagoon and set on 27 acres of lush gardens. Distances: Beachfront, Moorea Airport 25km, Port of Vaiare 28km.

**Property Features:** Pools (2), Restaurants (3), Bars (2), Helene Spa (day spa), Fitness centre, Bicycle hire, Tennis courts (2), Resort shop, Guest laundry, 24 hour reception, 144 rooms.

**Room Features:** Air-conditioning, Fan, Balcony, Tea/coffee making facilities, Mini bar, Cable TV, In-room movies (pay to view), Laundry.

**Max Capacity:** Lanai Room/Lanai Room With View – 2, Beach Junior Suite/Overwater Junior Suite – 3 adults or 2 adults/2 children.

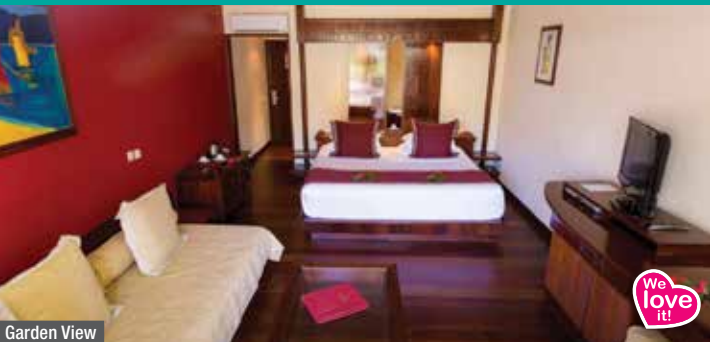
^Price includes XPF200 local city tax per person per night to be paid directly to the hotel by you.



\*Prices are a guide only, subject to change and availability and are in New Zealand Dollars. From prices for accommodation are per room per night for 2 people, unless otherwise specified and based on the lowest room category for travel in low season. Prices for tours and transfers are per person, unless otherwise specified. For full terms and conditions including pricing and conditions, refer to the Booking Conditions at the back of this brochure.

# MOOREA HOTELS

## MANAVA BEACH RESORT & SPA MOOREA



Garden View

Maharepa, Moorea (MOZ)  
MAP PAGE 24 REF. 2

From **\$532**\*<sup>^</sup>

- ❖ Coral reef preservation nursery
- ❖ Overwater bungalows and garden bungalows with private plunge pools
- ❖ Traditional Tahitian day spa with hammam

**Includes full breakfast daily and complimentary mini bar replenished daily.**

**Location:** Sitting on the island shore by the village of Maharepa, near Cook's Bay and the Gulf of Moorea. Distances: Beachfront, Moorea Airport 5km, Port of Vaiare 9km.

**Property Features:** Pool (infinity), Restaurant, Bars (2), Room service, Manea Spa (day spa), Watersports and dive centre, Bicycle hire, Pearl boutique, Resort shop, Laundry (extra charge), 24 hour reception, Parking (free), 90 rooms.

**Room Features:** Plunge pool (Garden Pool Bungalow), Air-conditioning, Terrace, Sundeck, Tea/coffee making facilities, DVD player, Cable TV.

**Max Capacity:** Garden View – 2 adults/1 child, Family Garden Duplex – 4 adults or 2 adults/3 children, Garden Duplex (with Kitchenette)/Garden Pool Bungalow/Beach Bungalow/Overwater Bungalow – 3 adults or 2 adults/2 children.

<sup>^</sup>Price includes XPF200 local city tax per person per night to be paid directly to the hotel by you.



## HILTON MOOREA LAGOON RESORT & SPA



Garden Pool Bungalow

Papetoai, Moorea (MOZ)  
MAP PAGE 24 REF. 2

From **\$1001**\*<sup>^</sup>

- ❖ French Polynesia's only overwater restaurant
- ❖ All Garden Bungalows offer plunge pools
- ❖ Contemporary Polynesian-style bungalows with private terraces

**Includes full breakfast daily.**

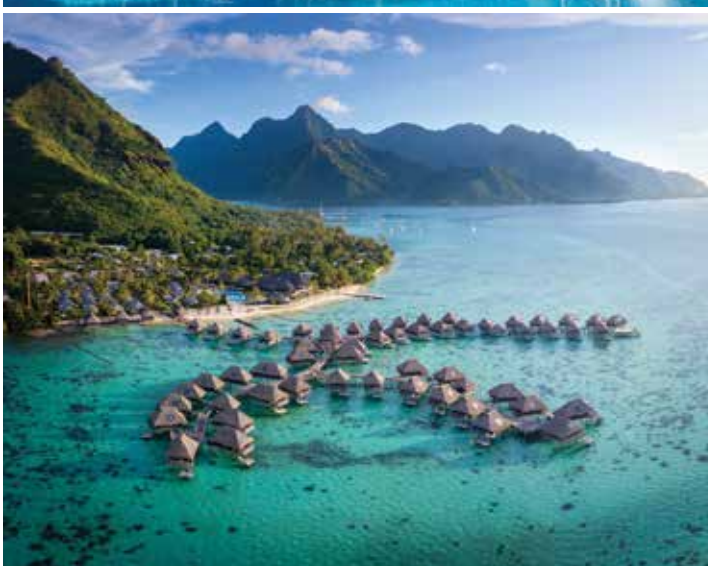
**Location:** Between two bays on the island of Moorea. Distances: Beachfront, Moorea Airport 14km, Port of Vaiare 18km.

**Property Features:** Pool, Restaurants (3), Bars (3), Room service, Day spa, 24 hour reception, Tennis courts (2), Fitness centre, Resort boutique, Laundry/dry cleaning service, 106 rooms.

**Room Features:** Free Wi-Fi, Air-conditioning, Fan, Balcony, Tea/coffee making facilities, DVD player, Docking station, Cable TV, Ironing facilities, Hair dryer, Safe.

**Max Capacity:** Garden Pool Bungalow/Lagoon Bungalow/Overwater Bungalow/Panoramic Overwater Bungalow – 3, Garden Pool Suite – 2 adults/2 children.

<sup>^</sup>Price includes XPF200 local city tax per person per night to be paid directly to the hotel by you.



\* Prices are a guide only, subject to change and availability and are in New Zealand Dollars. From prices for accommodation are per room per night for 2 people, unless otherwise specified and based on the lowest room category for travel in low season. Prices for tours and transfers are per person, unless otherwise specified. For full terms and conditions including pricing and conditions, refer to the Booking Conditions at the back of this brochure.

LE MAITAI POLYNESIA BORA BORA



Matira, Bora Bora (BOB)  
MAP PAGE 24 REF. 3

From **\$382**\*^

- ◆ Direct access to the only public beach on Bora Bora
- ◆ Overwater bungalows have a glass floor to admire the marine life
- ◆ Beach restaurant serves drinks and meals right on the water

**Includes full breakfast daily.**

**Location:** Sitting among tropical gardens and close to Matira Beach. Distances: Beachfront, Motu Mute Airport 14km.

**Getting There:** By launch transfer from Motu Mute Airport to the resort. Ask your travel agent for details.

**Property Features:** Wi-Fi (common areas – extra charge), 24 hour reception, Restaurant, Bar, Resort shop, Use of non-motorised watersports, 74 rooms.

**Room Features:** Wi-Fi (extra charge), Air-conditioning, Balcony, Tea/coffee making facilities, Mini bar, Cable TV, Hair dryer.

**Max Capacity:** Garden View/Lagoon View/Beach Bungalow/Overwater Bungalow – 3.

^Price includes XPF200 local city tax per person per night to be paid directly to the hotel by you.



SOFITEL BORA BORA MARARA BEACH RESORT



Nunue Vaitape, Bora Bora (BOB)  
MAP PAGE 24 REF. 3

From **\$706**\*^

- ◆ Bungalows have a contemporary Polynesian design
  - ◆ Private beach access with a protected coral reef
  - ◆ Restaurant with theme nights and a Tahitian oven overlooking the lagoon
- Includes full breakfast daily and mini bar replenished daily.**

**Location:** On the edge of one of the most beautiful lagoons in the world. Distances: Beachfront, Motu Mute Airport 6km.

**Getting There:** By launch transfer from Motu Mute Airport to the resort. Ask your travel agent for details.

**Property Features:** Pool (infinity), Restaurant, Bar, Day spa, Use of snorkelling equipment, stand-up paddle boards and kayaks, Watersports and activities centre, 55 rooms.

**Room Features:** Air-conditioning, Fan, Sun lounge, Mini bar, Cable TV, Coffee pod machine.

**Max Capacity:** Superior Garden Bungalow/Superior Beach Bungalow – 3, Superior Lagoon Front Bungalow/Luxury Overwater Bungalow – 2.

^Price includes XPF200 local city tax per person per night to be paid directly to the hotel by you.



INTERCONTINENTAL BORA BORA LE MOANA RESORT



Matira Point, Bora Bora (BOB)  
MAP PAGE 24 REF. 3

From **\$1294**\*^

- ◆ Breakfast delivered on a wooden canoe to overwater bungalows
- ◆ Dine on the sand with lagoon views at Noa Noa Terrace Restaurant
- ◆ Beach bungalows have a private terrace and outdoor shower

**Includes full breakfast daily.**

**Location:** Between two beaches in the south of Bora Bora's main island. Distances: Beachfront, Motu Mute Airport 20km.

**Getting There:** By launch transfer from Motu Mute Airport to the resort. Ask your travel agent for details.

**Property Features:** Pool, Restaurants (2), Bar, Room service, Massage facilities, Use of snorkelling equipment and kayaks, 24 hour reception, 62 rooms.

**Room Features:** Air-conditioning, Fan, Balcony, Tea/coffee making facilities, Cable TV.

**Max Capacity:** Beach Junior Suite Bungalow – 2 adults/2 children, Lagoon Overwater Bungalow – 2 adults/1 child.

^Price includes XPF200 local city tax per person per night to be paid directly to the hotel by you.



\*Prices are a guide only, subject to change and availability and are in New Zealand Dollars. From prices for accommodation are per room per night for 2 people, unless otherwise specified and based on the lowest room category for travel in low season. Prices for tours and transfers are per person, unless otherwise specified. For full terms and conditions including pricing and conditions, refer to the Booking Conditions at the back of this brochure.

# BORA BORA HOTELS

## SOFITEL BORA BORA PRIVATE ISLAND



Luxury Lodge Bungalow Ocean View

Nunue Vaitape, Bora Bora (BOB)  
MAP PAGE 24 REF. 3

From **\$1265**\*^

- ❖ Overwater villas with glass floor viewing panels and a private terrace
- ❖ Panoramic views from the Manu Tuki Restaurant or Mako Bar
- ❖ Spacious lodges nestled among tropical palm trees

**Includes breakfast daily and mini bar replenished daily.**

**Location:** Sitting on its own private island surrounded by a lagoon. Distances: Beachfront, Motu Mute Airport 6km.

**Getting There:** By launch transfer from Motu Mute Airport to the resort. Ask your travel agent for details.

**Property Features:** Restaurant, Bar, Room service, Day spa, Activities centre, Use of snorkelling equipment, paddle, boards and kayaks, 30 rooms.

**Room Features:** Air-conditioning, Fan, Mini bar, Tea/coffee making facilities, Coffee pod machine, Cable TV, Docking station, Sun lounge.

**Max Capacity:** Luxury Lodge Bungalow Ocean View/Luxury Overwater Bungalow/Luxury Overwater Bungalow Horizon/Luxury Villa Ocean View – 2.

^Price includes XPF200 local city tax per person per night to be paid directly to the hotel by you.



## FOUR SEASONS BORA BORA



Motu Tehotu, Bora Bora (BOB)  
MAP PAGE 24 REF. 3

From **\$2552**\*^

- ❖ Kahaia tree-inspired day spa uses native ingredients
- ❖ Spacious overwater bungalows with private plunge pools
- ❖ Families will love the kids club and marine life demonstrations

**Location:** On a white sand beach facing Mount Otemanu and Mount Pahia. Distances: Beachfront, Motu Mute Airport 8km.

**Getting There:** By launch transfer from Motu Mute Airport to the resort. Ask your travel agent for details.

**Property Features:** Pool, Spa (heated), Restaurants (2), Bars (2), Games room, Day spa, Fitness centre, Use of kayaks and windsurfing equipment, Tennis court, Kids club 5-12 years (extra charge), Laundry service, 24 hour reception, 107 rooms.

**Room Features:** Air-conditioning, Fan, Balcony, Mini bar, Tea/coffee making facilities, Butler service, In-room movies (pay to view), Cable TV, Ironing facilities, Hair dryer, Safe.

**Max Capacity:** 1 Bedroom Mountain View Overwater Bungalow – 3 adults/1 child.

^Price includes XPF200 local city tax per person per night to be paid directly to the hotel by you.



## CONRAD BORA BORA NUI



Beach Pool Villa

Motu Toopua, Bora Bora (BOB)  
MAP PAGE 24 REF. 3

From **\$1376**\*^

- ❖ Hina Spa is located on a hilltop with breathtaking views
- ❖ Private islet exclusive to resort guests and accessible only by boat
- ❖ Children will love the mini golf course and Tamari'i Kids Club

**Includes full breakfast daily.**

**Location:** In a cove of turquoise waters, white sand and black lava rock. Distances: Beachfront, Motu Mute Airport 6km.

**Getting There:** By launch transfer from Motu Mute Airport to the resort. Ask your travel agent for details.

**Property Features:** Pool, Spa, Restaurants (3), Bars (3), 24 hour room service, Hina Spa (day spa), Kids club 4-14 years (extra charge), Fitness centre, Library, DVD library, 114 rooms.

**Room Features:** Air-conditioning, Fan, Balcony, Tea/coffee making facilities, Coffee pod machine, Mini bar, Cable TV, DVD player.

**Max Capacity:** Beach Pool Villa/Lagoon View Suite/Overwater Villa/Pool Overwater Villa – 3.

^Price includes XPF200 local city tax per person per night to be paid directly to the hotel by you.



\* Prices are a guide only, subject to change and availability and are in New Zealand Dollars. From prices for accommodation are per room per night for 2 people, unless otherwise specified and based on the lowest room category for travel in low season. Prices for tours and transfers are per person, unless otherwise specified. For full terms and conditions including pricing and conditions, refer to the Booking Conditions at the back of this brochure.

INTERCONTINENTAL BORA BORA RESORT & THALASSO SPA



Emerald Overwater Villa

Motu Piti Aau, Bora Bora (BOB)  
MAP PAGE 24 REF. 3

From **\$2125**<sup>\*\*^</sup>

- ❖ Offers an overwater chapel with a glass floor
- ❖ Deep Ocean Spa offers the first seawater therapy centre in the South Pacific
- ❖ Le Corail offers French degustation with wines paired by a sommelier

**Includes full breakfast daily.**

**Location:** Between the 'two hearts' of Motu Piti Aau, a coral island on the barrier reef. Distances: Beachfront, Motu Mute Airport 15km.

**Getting There:** By launch transfer from Motu Mute Airport to the resort. Ask your travel agent for details.

**Property Features:** Pool, Restaurants (3), Bar, 24 hour room service, Deep Ocean Spa (day spa), Tennis court, 24 hour reception, 64 rooms.

**Room Features:** Air-conditioning, Fan, Balcony, Tea/coffee making facilities, Cable TV, DVD player.

**Max Capacity:** Emerald Overwater Villa/Sapphire Overwater Villa/Diamond Overwater Villa/Diamond Otemanu Overwater Villa – 3 adults or 2 adults/2 children.

**^Price includes XPF200 local city tax per person per night to be paid directly to the hotel by you.**



THE ST. REGIS BORA BORA RESORT



1 Bedroom Garden Suite Villa with Pool

Motu Ome'e, Bora Bora (BOB)  
MAP PAGE 24 REF. 3

From **\$1932**<sup>\*\*^</sup>

- ❖ Largest overwater villas in the South Pacific
- ❖ Spa situated on its own private island in the Lagoonarium
- ❖ Lagoon Signature Restaurant by award winning chef Jean-Georges

**Includes full buffet breakfast daily.**

**Location:** On a coral sand islet. Distances: Beachfront, Motu Mute Airport 7km.

**Getting There:** By launch transfer from Motu Mute Airport to the resort. Ask your travel agent for details.

**Property Features:** Pools (2), Restaurants (4), 24 hour room service, Bars (2), Miri Miri Spa by Clarins (day spa), Fitness centre, Kids club 5-12 years (free), 90 rooms.

**Room Features:** Air-conditioning, Terrace, Fan, Tea/coffee making facilities, Mini bar, DVD player, Cable TV, Hair dryer, Safe.

**Max Capacity:** 1 Bedroom Garden Suite Villa with Pool/1 Bedroom Overwater Deluxe Suite Villa/1 Bedroom Overwater Deluxe Suite Mt Otemanu View/1 Bedroom Overwater Royal Suite with Pool/1 Bedroom Overwater Superior Suite Villa – 3.

**^Price includes XPF200 local city tax per person per night to be paid directly to the hotel by you.**



\*Prices are a guide only, subject to change and availability and are in New Zealand Dollars. From prices for accommodation are per room per night for 2 people, unless otherwise specified and based on the lowest room category for travel in low season. Prices for tours and transfers are per person, unless otherwise specified. For full terms and conditions including pricing and conditions, refer to the Booking Conditions at the back of this brochure.

# BORA BORA & OUTER ISLANDS HOTELS

## LE MÉRIDIEN BORA BORA



Classic

Motu Piti Aau, Bora Bora (BOB)  
MAP PAGE 24 REF. 3

From **\$1997** \*^

- ❖ Turtle Sanctuary dedicated to marine life
- ❖ Overwater bungalows with large glass-panel floors
- ❖ Tapas bar, beachside restaurant and a boat-shaped terrace bar

**Includes full breakfast daily.**

**Location:** Set on an islet with views of Mount Otemanu. Distances: Beachfront, Motu Mute Airport 6km.

**Getting There:** By launch transfer from Motu Mute Airport to the resort. Ask your travel agent for details.

**Property Features:** Pools (2), Restaurants (3), Bars (2), 24 hour room service, Day spa, Turtle sanctuary, 24 hour reception, 98 rooms.

**Room Features:** Lagoon views, Air-conditioning, Tea/coffee making facilities, Mini bar, Cable TV, Docking station.

**Max Capacity:** Classic/Beach/Overwater Lagoon View/Overwater Premium Otemanu View – 3, 1 Bedroom Pool Beach Villa – 5, 2 Bedroom Pool Beach Villa – 8.

^Price includes XPF200 local city tax per person per night to be paid directly to the hotel by you.



## ROYAL HUAHINE



Garden Bungalow

Baie de Fiti, Huahine (HUH)  
MAP PAGE 24 REF. 7

From **\$330** \*^

- ❖ Free boat transfers to the main town of Fare prior to 5pm
- ❖ Restaurant over the lagoon offering beautiful views
- ❖ Overwater bungalows feature a bathtub and spacious sundeck

**Location:** In a small bay on the island of Huahine. Distances: Beachfront, Town centre 8.5km, Huahine Airport 12km.

**Getting There:** By air from Pepeeete to the resort. Ask your travel agent for details.

**Property Features:** Free Wi-Fi (common areas), Pool, Restaurant, Bar, Laundry service, 40 rooms.

**Room Features:** Wi-Fi (extra charge), Air-conditioning, Fan, Balcony, Tea/coffee making facilities, Mini bar, Beach towels, Hair dryer, Safe, All rooms non smoking.

**Max Capacity:** Garden Bungalow/Beach Bungalow/Overwater Bungalow – 2.

^Price includes XPF200 local city tax per person per night to be paid directly to the hotel by you.



## TIKEHAU PEARL BEACH RESORT



Overwater Bungalow

Tikehau, Tuamotu (TIH)  
MAP PAGE 24 REF. 8

From **\$867** \*^

- ❖ On a coral-filled lagoon in a wild coconut grove
- ❖ The restaurant and bar sit on the edge of the infinity pool
- ❖ Free badminton, beach volleyball, snorkelling, kayaking and petanque

**Includes full breakfast daily.**

**Location:** On a palm-fringed white sand beach. Distances: Beachfront.

**Getting There:** By launch transfer from Tikehau Airport to the resort. Ask your travel agent for details.

**Property Features:** Free Wi-Fi (common areas), Pool, Restaurant, Bar, Day spa, Dive centre, Use of non-motorised watersports, Free boat shuttle to local village, 37 rooms.

**Room Features:** Air-conditioning (Premium Overwater Bungalow, Overwater Suite, Beach Villa with Pool), Fan, Mini bar, Tea/coffee making facilities, Ironing facilities, Cable TV, Hair dryer, Safe.

**Max Capacity:** Overwater Bungalow/Premium Overwater Bungalow/Overwater Suite – 3 adults or 2 adults/2 children, Beach Villa with Pool – 5.

^Price includes XPF150 local city tax per person per night to be paid directly to the hotel by you.



## KIA ORA RESORT & SPA



Beach Bungalow

Avatoru, Rangiroa French Polynesia (RGI)  
MAP PAGE 24 REF. 5

From **\$662** \*^

- ❖ Miki Miki Bar is built on stilts with amazing lagoon views
- ❖ Bungalows with a private outdoor jacuzzi or pool overlooking the lagoon
- ❖ Overwater bungalows with glass floor

**Includes full breakfast daily.**

**Location:** On a volcanic island in the Tuamotu archipelago, sitting in the heart of a coconut plantation. Distances: Beachfront, Town centre 8.3km, Rangiroa Airport 3km.

**Getting There:** By coach transfer from Rangiroa Airport to the resort. Ask your travel agent for details.

**Property Features:** Pool, Spa, Restaurant, Bar, Poekura Spa (day spa), Gym, Rooftop terrace, Sundeck, Bicycle hire, Resort shop, Library, Laundry service, 24 hour reception, Parking (free), 60 rooms.

**Room Features:** Air-conditioning, Fan, Mini bar, Tea/coffee making facilities, Bathrobes, Hair dryer, Ironing facilities, Beach towels, Safe.

**Max Capacity:** Beach Bungalow/Beach Deluxe Bungalow/Overwater Bungalow – 3.

^Price includes XPF150 local city tax per person per night to be paid directly to the hotel by you.





LE TAHA'A ISLAND RESORT & SPA



Taha'a Overwater Suite

Taha'a, Raiatea (THA)  
MAP PAGE 24 REF. 6

From **\$1383**<sup>\*\*^</sup>

- ❖ Suites and villas inspired by traditional Polynesian architecture and style
  - ❖ Free-form swimming pool surrounded by lush tropical gardens
  - ❖ Snorkel pristine coral and bountiful sea life from your villa deck
- Includes full breakfast daily.**

**Location:** On its own remote island off the coast of Taha'a. Distances: Beachfront, Raiatea Airport 16.4km.  
**Getting There:** From Raiatea Airport by launch transfer to the resort. Ask your travel agent for details.  
**Property Features:** Pool, Restaurants (3), Bars (2), Day spa, Fitness centre, Tennis court, Use of non-motorised watersports, Laundry services, 60 rooms.  
**Room Features:** Air-conditioning, Fan, Mini bar, Tea/coffee making facilities.  
**Max Capacity:** Taha'a Overwater Suite/Taha'a Premium Overwater Suite/Sunset Overwater/Bora Bora Overwater/End of Pontoon Overwater – 3, Beach Villa with Pool – 3 adults/1 child, Royal Pool Beach Villa – 5 adults/1 child.

<sup>^</sup>Price includes XPF200 local city tax per person per night to be paid directly to the hotel by you.



THE BRANDO



1 Bedroom Villa

Tetiaroa (TTI)  
MAP PAGE 24 REF. 4

From **\$5302**<sup>\*\*^</sup>

- ❖ Sea turtles, mantra rays and exotic birds frequent the lagoon and beach
  - ❖ Each villa has a bicycle to explore the island
  - ❖ Villas feature private beach area plunge pool
- Includes full breakfast daily.**

**Location:** On French Polynesia's private island of Tetiaroa. Distances: Beachfront, Tetiaroa Airport 1.5km.  
**Getting There:** By air from Tetiaroa Airport to the resort. Ask your travel agent for details.  
**Property Features:** Pool (infinity), Spa, Restaurants (3), Bars (2), 24 hour room service, Pearl shop, Boutique, Library, Fitness centre, Tennis court, Use of non-motorised watersports, 35 rooms.  
**Room Features:** Private plunge pool, Outdoor bath, Balcony, Air-conditioning, Fan, Tea/coffee making facilities, DVD player, Smart TV, Bluetooth speakers, Bathrobes, Hair dryer, Ironing facilities, Safe.  
**Max Capacity:** 1 Bedroom Villa – 2, 2 Bedroom Villa – 4, 3 Bedroom Villa – 6.

<sup>^</sup>Minimum 2 night stay applies.



\*Prices are a guide only, subject to change and availability and are in New Zealand Dollars. From prices for accommodation are per room per night for 2 people, unless otherwise specified and based on the lowest room category for travel in low season. Prices for tours and transfers are per person, unless otherwise specified. For full terms and conditions including pricing and conditions, refer to the Booking Conditions at the back of this brochure.



Espiritu Santo

# VANUATU

If your idea of a South Pacific holiday mixes island relaxation with once-in-a-lifetime adventures, then Vanuatu is for you. Relax on a white sand beach, zipline through the rainforest or visit one of the island's many natural wonders, including the hillside pools of Mele Cascades and the stunning Blue Holes of Espiritu Santo.

## SEE

- Observe a land-diving ritual on Pentecost Island where tribesmen jump from bamboo towers with vines tied to their ankles
- Watch on as the Ni-Vanuatu ladies of Santo stand waist deep in water and use their hands to create music

## DO

- Take a guided tour to the world's most accessible active volcano on Tanna Island and get within 150 metres of the crater rim
- Wander through Port Vila's fresh produce markets for a truly local experience

## EAT & DRINK

- Feast on freshly grilled fish and rice and drink traditional kava at Palm Cove Beach Bar, Mele
- Indulge your sweet tooth with fresh chocolate handcrafted by Aelan Chocolate Makers, only 15 minutes from Port Vila

## WHAT'S ON

### Nagol Festival

1 April to 28 June

### Independence Day

4 July

### Children's Day

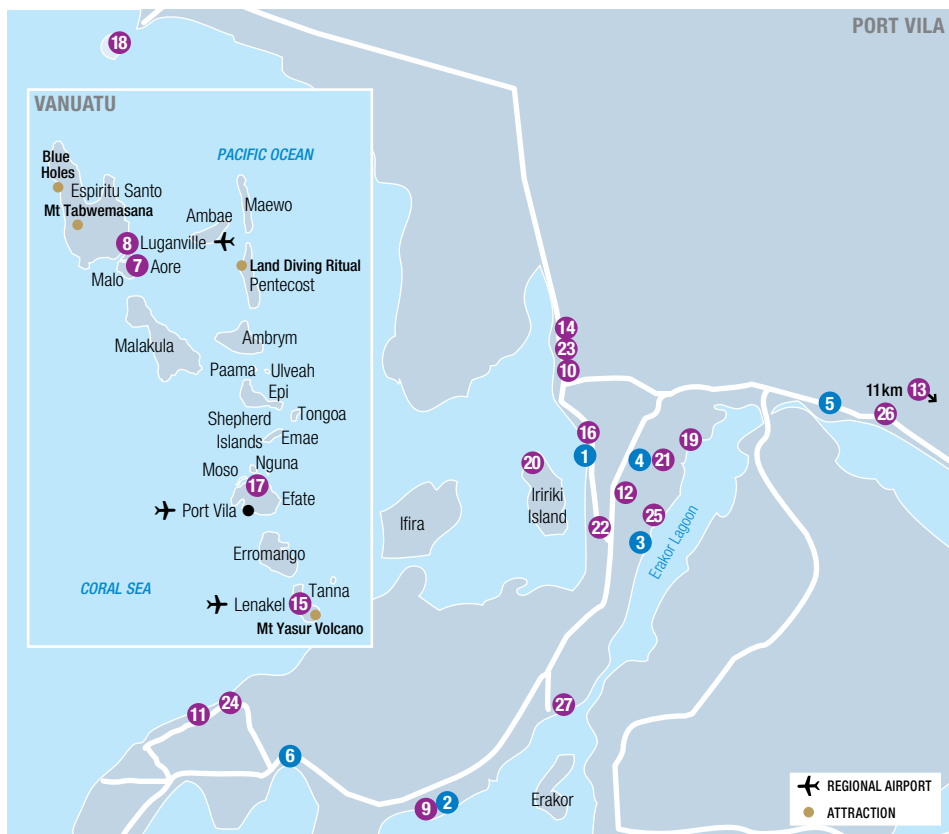
24 July

### Toka Festival

September (dates to be confirmed)

### Unity Day

November (dates to be confirmed)



REF.	APARTMENTS	PAGE
1	Mariner Apartments ◆◆◆◆	40
2	Nasama Resort ◆◆◆◆	41
3	Ramada Resort by Wyndham Port Vila ◆◆◆◆	42
4	The Terraces Boutique Apartments ◆◆◆◆◇	45
5	Tropicana Lagoon Apartments Resort ◆◆◆◇	39
6	Vale Vale Beachfront Villas ◆◆◆◆◇	45

REF.	HOTELS	PAGE
7	Aore Island Resort ◆◆◆	46
8	Barrier Beach Resort ◆◆◆◆	47
9	Breakas Beach Resort ◆◆◆◇	38
10	Chantilly's on the Bay ◆◆◆◇	38
11	CoCo Beach Resort ◆◆◆◆	39
12	Coconut Palms Resort ◆◆◆	37
8	Coral Quays Fish & Dive Resort ◆◆◆◇	46
13	Eratap Beach Resort ◆◆◆◆◇	43

REF.	HOTELS	PAGE
8	The Espiritu ◆◆◆◆	46
14	Fatumaru Lodge ◆◆◆	37
15	Friendly Beach Vanuatu ◆◆◆	48
16	Grand Hotel and Casino ◆◆◆◆	39
17	The Havannah Vanuatu ◆◆◆◆◇	43
18	Hideaway Island Resort & Marine Sanctuary ◆◆◆	37
19	Holiday Inn Resort Vanuatu ◆◆◆◆	40
20	Iriki Island Resort & Spa ◆◆◆◆◇	44
21	Mangoes Resort ◆◆◆◆	41
22	The Melanesian Port Vila ◆◆◆	38
23	Moorings Vanuatu ◆◆◆	37
24	Paradise Cove Resort ◆◆◆◆	40
25	Poppys on the Lagoon Resort ◆◆◆◆	42
7	Ratua Island Resort & Spa ◆◆◆◆◇	47
26	Sunset Bungalows Resort ◆◆◆◆◇	39
8	Village de Santo Resort ◆◆◆	47
27	Warwick Le Lagoon – Vanuatu ◆◆◆◆◇	45
15	White Grass Ocean Resort & Spa ◆◆◆◆	48



## AVIS CAR HIRE

Avis Vanuatu is Vanuatu's leading car rental company. Avis is located at Bauerfield International Airport and in downtown Port Vila. Be met 24 hours a day at the airport for all pre-booked reservations.

### Includes:

- Unlimited kilometres • Loss Damage Waiver
- Taxes • Administration fee

### Does Not Include:

- Excess Reduction • One way rental fees
- Delivery/collection fees of non-Avis locations
- Fuel • Bond • Airport fee

	3-6 Days	7+ Days
1 Apr 20 – 31 Mar 21		
Compact (Group A)	\$106* <sup>^</sup>	\$97* <sup>^</sup>
Intermediate (Group C)	\$155* <sup>^</sup>	\$150* <sup>^</sup>
Intermediate 4WD (Group K)	\$196* <sup>^</sup>	\$185* <sup>^</sup>

<sup>^</sup>Price valid per vehicle per day, based on 24 hour rental period. All hires are subject to Avis American Vanuatu 20/21 rental terms and conditions.



## TASTE OF VANUATU

Join us on the Taste of Vanuatu Tour that highlights the diversity of produce found in Vanuatu. First stop is a local village with a school where you can gain an insight into village life and how food plays an important role for the people of Vanuatu. Also included is the WWII Museum at Havannah Harbour. Enjoy lunch before visiting the Tanna Coffee Factory and Kava Wine Tasting. The final stop is the Tamanu Soap Shop before heading back to Port Vila.

### Includes:

- Visit a local village
- Expert guide • Admission fees
- Tropical fruit and chilled water • Lunch
- Return transfers from selected Port Vila accommodation

**Duration:** 7 hours

**Departs:** Mon to Sat from Port Vila at 8:30am

	Adult	Child 5-12 yrs
1 Apr 20 – 31 Mar 21	\$140*	\$70*



## PORT VILA AIRPORT TRANSFERS

Get your holiday off to a great start with a door to door private car transfer or shared coach transfer service.

Convenient transfers are available from Port Vila's Bauerfield International Airport to Port Vila accommodation, 24 hours a day, 7 days a week. Sit back, relax and be transferred in air-conditioned comfort.

Travel distance from Bauerfield International Airport to Port Vila is approximately 6.6 kilometres. Travel time depends on time of day and traffic.

Share Coach Per Person	Adult	Child 5-12 yrs
1 Apr 20 – 31 Mar 21	\$19* <sup>^</sup>	\$10* <sup>^</sup>

Private Vehicle Per Vehicle	1 to 4 People
1 Apr 20 – 31 Mar 21	\$106* <sup>^</sup>

<sup>^</sup>Price based on one way Port Vila Airport to/from downtown Port Vila.



## DISCOVER VANUATU

This tour extends to the east coast of Efate visiting a cultural village and learning about the custom and way of life. See cultural dances performed, sample tropical fruits, and learn how cacao is cultivated and fermented at Vanuatu's first chocolate factory. Next, visit the turtle sanctuary and see the 100-year-old turtle, Big Mama. After a dip in the lagoon and a barbecue lunch, take a plunge on the jungle rope at Eton Blue Lagoon.

### Includes:

- Cultural Village Tour
- Expert guide
- Admission fees
- Barbecue lunch
- Return transfers from selected Port Vila accommodation

**Duration:** 8 hours

**Departs:** Daily from Port Vila at 8:30am

	Adult	Child 5-12 yrs
1 Apr 20 – 31 Mar 21	\$140*	\$70*



## PORT VILA SIGHTSEEING TOUR

This tour is a short introduction to Port Vila. Discover key landmarks and highlights such as the Parliament House, British and French jails and hospitals and the Cultural Centre. Learn about the history of Vanuatu and the influence that the British and French had over the islands and their cultures. Be informed of the best places to shop, dine and swim.

### Includes:

- Expert guide
- Chilled water
- Return transfers from selected Port Vila accommodation

**Duration:** 1 hour 30 minutes

**Departs:** Daily from Port Vila at 10:30am, 2:30pm

	Adult	Child 5-12 yrs
1 Apr 20 – 31 Mar 21	\$43*	\$22*



## PELE ISLAND DAY TOUR

Explore one of Vanuatu's most beautiful islands. This tour is a chance to learn about the historical and local life of the island people along with the new ways of daily living. At the island you are welcomed by swaying palms, white sandy beach and turquoise waters before snorkelling at a beautiful reef site located 100 metres offshore.

### Includes:

- Learn about the daily local life
- Expert guide
- Use of snorkelling equipment and sea kayaks
- Island admission fee
- Buffet barbecue lunch and chilled water
- Return transfers from selected Port Vila accommodation

**Duration:** 8 hours

**Departs:** Daily from Port Vila at 8:30am

	Adult	Child 5-12 yrs
1 Apr 20 – 31 Mar 21	\$166*	\$83*

# VANUATU TOURS



## HORSE RIDING AT MELE CASCADES

Explore the spectacular and hidden river that feeds the amazing Mele Cascade waterfalls by horseback. This ride takes you through the rainforest and to the banks of the river. Riders can take time to swim and relax in the refreshing waters, enjoy a picnic lunch (extra charge) or just relax and take in the beauty of nature in this special hidden part of Efate.

### Includes:

- Riding through the rainforest
- Horse and equipment
- Expert guide
- Return transfers from selected Port Vila accommodation

**Duration:** 3 hours

**Departs:** Daily from Port Vila at 9:30am

**Not suitable for children under 5 yrs.**

	Adult/Child
1 Apr 20 – 31 Mar 21	<b>\$151*</b>



## MELE CASCADES TOUR

At the Mele Cascades, you will be guided through the lush and tropical rainforest where you will be able to view the cultivation of vegetable gardens and learn about the culture and livelihood of the local people. Go for a dip in the clear natural rock pools or sit in the cool shade and enjoy the green scenery. Should time allow, you will be able to enjoy the scenery from the lookout. At the base, you will find an array of tropical seasonal fruits and cold drinks awaiting on your return.

### Includes:

- Expert guide
- Admission to Mele Cascades
- Light refreshments
- Return transfers from selected Port Vila accommodation

**Duration:** 2 hours 30 minutes

**Departs:** Daily from Port Vila at 8am, 3pm

	Adult	Child 5-12 yrs
1 Apr 20 – 31 Mar 21	<b>\$56*</b>	<b>\$28*</b>



## BLACK MAGIC CULTURAL VILLAGE TOUR

While Vanuatu is associated with beautiful beaches, lush forests and an endless array of adventures, there is a more mysterious side to it. Black magic plays an important part of the local culture. On this tour visit the newly opened Black Magic Culture village and have the chance to see a cultural performance and the magic show which runs for 45 minutes. After the performances, take the opportunity to talk to the locals while enjoying refreshments.

### Includes:

- Mele Mountaintop Black Magic Village
- Magic rituals • Expert guide
- Tropical fruit and cold drinks • Admission fee
- Return transfers from selected Port Vila accommodation

**Duration:** 2 hours 30 minutes

**Departs:** Daily from Port Vila at 9am, 10am, 12pm, 2pm

	Adult	Child 4-12 yrs
1 Apr 20 – 31 Mar 21	<b>\$56*</b>	<b>\$28*</b>



## TANNA DAY TRIP

The scenic one hour flight to Tanna Island takes in the spectacular views of Port Vila Harbour, South Efate, Erromango and its beautiful coastline. Enjoy lunch in the village before taking a 4WD adventure across the island to Yasur Volcano. Take a short walk to the rim of the crater, and experience the awesome power of one of the world's most accessible, active volcanoes. Mt Yasur also has the world's only Volcano Post Box – so take some post cards with you. Enjoy the magnificent fireworks display and feel the earth tremble beneath your feet.

### Includes:

- Mt Yasur Volcano • Eco cultural tour • Expert guide
- Admission fees • Lunch
- Return transfers from selected Port Vila accommodation
- Return flights from Port Vila to Tanna Island

**Duration:** 11 hours

**Departs:** Daily from Port Vila at 7am

	Adult	Child 4-11 yrs
1 Apr 20 – 31 Mar 21	<b>\$825*</b>	<b>\$588*</b>



## OVERNIGHT TANNA ISLAND

Travel to Tanna Island for this overnight volcano tour and see one of the world's most active volcanoes with shooting lava and volcanic ash only hundreds of metres away. On the way to the volcano, you will pass custom villages and travel through beautiful landscapes before standing on the rim of the crater at dusk. You will have plenty of time to take in the natural fireworks display and take once in a lifetime photos before dinner.

### Includes:

- 1 night accommodation at Tanna Evergreen
- Half day Cultural Village and Yasur Volcano Tour
- Lunch, dinner and breakfast
- Return transfers from selected Port Vila accommodation
- Return flights from Port Vila to Tanna Island

**Departs:** Daily from Port Vila at 7am

**Returns:** Port Vila at 12 noon

	Adult	Child 4-11 yrs
1 Apr 20 – 31 Mar 21	<b>\$1301*</b>	<b>\$1090*</b>



## OVERNIGHT SANTO ISLAND TOUR

Travel to Santo Island for this overnight tour. Upon arrival at Luganville, be transferred to your overnight accommodation at Village de Santo. Explore the beautiful east coast of Santo including stops at Champagne Beach. There are also three blue holes to see including Nanda, Riri and Matevulu. Visit Port Olry in the far north of Santo and enjoy a lobster or Coconut crab lunch. Return to your accommodation and enjoy dinner. Return the following day to Port Vila.

### Includes:

- 1 night accommodation at Village de Santo
- Champagne Beach • Port Olry • 3 blue holes
- Lunch and dinner
- Return transfers from selected Port Vila accommodation
- Return flights from Port Vila to Santo

**Departs:** Daily from Port Vila at 6:30am

**Returns:** Port Vila at 5:30pm

	Adult	Child 4-11 yrs
1 Apr 20 – 31 Mar 21	<b>\$1195*</b>	<b>\$1107*</b>

\* Prices are a guide only, subject to change and availability and are in New Zealand Dollars. From prices for accommodation are per room per night for 2 people, unless otherwise specified and based on the lowest room category for travel in low season. Prices for tours and transfers are per person, unless otherwise specified. For full terms and conditions including pricing and conditions, refer to the Booking Conditions at the back of this brochure.

**COCONUT PALMS RESORT**



Hibiscus



Cornwall Street, Port Vila (VLI)  
MAP PAGE 34 REF. 12

From **\$57\***

- ❖ A short walk to the centre of Port Vila
- ❖ Self-contained apartments are great for families
- ❖ Unique Vanuatu tapas at Navara Restaurant

**Includes full buffet breakfast daily.**

**Location:** Set among coconut palms and tropical gardens. Distances: Beachfront, Town centre 500m, Port Vila Airport 6km.

**Property Features:** Free Wi-Fi (common areas), Pool, Restaurant, Bar, Room service, Pool tables, Parking (extra charge), 46 rooms.

**Room Features:** Free Wi-Fi (Palm Deluxe, Superior Orchid), Air-conditioning (Palm Deluxe, Superior Orchid), Fan, Cable TV, Limited cooking facilities with microwave (Palm Deluxe).

**Max Capacity:** Hibiscus – 2, Superior Orchid – 3, Palm Deluxe – 4.



**FATUMARU LODGE**



Seafront Studio

Kumul Highway Port Vila (VLI)  
MAP PAGE 34 REF. 14

From **\$132\***

- ❖ Self-contained apartments with views of Port Vila Bay
- ❖ Large swimming pool set in a tropical surrounding with barbecue facilities
- ❖ Families and couples will love the free kayaks and paddle boards

**Location:** Set on the beach in Fatumaru Bay and a 10 minute walk from downtown. Distances: Beachfront, Town centre 1km, Port Vila Airport 3.6km.

**Property Features:** Pool, Use of kayaks and stand-up paddle boards, Shuttle bus (extra charge), Barbecue area, Laundry service, Parking (free), 14 rooms.

**Room Features:** Air-conditioning, Fan, Balcony, Tea/coffee making facilities, Limited cooking facilities, Cable TV, Hair dryer, Beach towels, Safe.

**Max Capacity:** Seafront Studio – 3, Seaview Family – 4, Seaview Penthouse – 5.



**HIDEAWAY ISLAND RESORT & MARINE SANCTUARY**



Twin

Hideaway Island, Mele Bay (VLI)  
MAP PAGE 34 REF. 18

From **\$63\***

- ❖ The world's only Underwater Post Office is just 35 metres from the shore
- ❖ Short five-minute ferry to the mainland runs 24/7
- ❖ Free glass bottom boat and snorkel tours, movie nights and watersports

**Includes light breakfast daily and guided cultural walking tour.**

**Location:** A small coral atoll in Mele Bay, surrounded by clear water. Distances: Beachfront, Town centre 10km, Port Vila Airport 6.4km.

**Getting There:** Coach transfers from Port Vila Airport must be booked in conjunction with your accommodation. **\$17\*** per adult return. Child prices on application.

**Property Features:** Free Wi-Fi (common areas), Restaurant, Bar, Pool, Use of non-motorised watersports, Nightly entertainment, Water taxi service to Port Vila (extra charge), Laundry service, Parking (free), 27 rooms.

**Room Features:** Wi-Fi (extra charge), Fan, Kitchen (Villas), Cable TV, Hammock.

**Max Capacity:** Twin – 2, 1 Bedroom Oceanfront Pool Villa – 3, Quad/1 Bedroom Oceanfront Villa – 4, 1 Bedroom Oceanfront Bungalow/Semi Attached 1 Bedroom Oceanfront – 5.



**MOORINGS VANUATU**



Standard King

Kumul Highway, Port Vila (VLI)  
MAP PAGE 34 REF. 23

From **\$85\***

- ❖ Family rooms with cooking facilities
- ❖ Infinity pool overlooking the bay
- ❖ Beachside dining deck on Fatumaru Bay

**Includes light breakfast daily and welcome drink on arrival.**

**Location:** Right on the Port Vila waterfront, within walking distance to the town centre. Distances: Beachfront, Town centre 1km, Port Vila Airport 4km.

**Property Features:** Free Wi-Fi (common areas), Pool, Restaurant, Bar, Games room, Library, Weekly movie nights, Use of non-motorised watersports (extra charge), Guest lounge, Guest laundry, 30 rooms.

**Room Features:** Wi-Fi (extra charge), Air-conditioning, Fan, Balcony or patio, Tea/coffee making facilities, Cable TV, Ironing facilities (on request), Hair dryer.

**Max Capacity:** Standard King/Poolside Premium/Harbourside King – 2, Family – 4.



\*Prices are a guide only, subject to change and availability and are in New Zealand Dollars. From prices for accommodation are per room per night for 2 people, unless otherwise specified and based on the lowest room category for travel in low season. Prices for tours and transfers are per person, unless otherwise specified. For full terms and conditions including pricing and conditions, refer to the Booking Conditions at the back of this brochure.

# PORT VILA HOTELS

## THE MELANESIAN PORT VILA



Hibiscus

Lini Highway, Port Vila (VLI)  
MAP PAGE 34 REF. 22

From **\$84\***

- ❖ Spacious rooms with furnished balconies
  - ❖ Casino and bar located on the ground floor
  - ❖ Poolside bar and grill offers relaxed dining with themed cultural nights
- Includes light breakfast daily and welcome drink on arrival.**

**Location:** A short distance to attractions, restaurants, markets and shops. Distances: Beachfront, Town centre 1.1km, Port Vila Airport 6.5km.

**Property Features:** Pools (2), Restaurant, Bar, Day spa, Room service, Casino, Barbecue area, Tennis courts (2), Library, 24 hour reception, Laundry service, Parking (free), 75 rooms.

**Room Features:** Air-conditioning, Balcony, Tea/coffee making facilities, Cable TV, Mini bar, In-room movies (free), Ironing facilities, Hair dryer.

**Max Capacity:** Hibiscus/Orchid/Superior Orchid – 3, 1 Bedroom Bougainvillea – 3 adults/1 child, 2 Bedroom Bougainvillea – 7, Melanesian Suite – 2.



## CHANTILLY'S ON THE BAY



Studio

Fatumarua Bay, Port Vila (VLI)  
MAP PAGE 34 REF. 10

From **\$159\***

- ❖ Bright contemporary rooms with private balconies
- ❖ Relaxed bar located on the beach
- ❖ Outdoor pool with a sun terrace overlooking the beautiful bay

**Location:** On the water's edge at Fatumarua Bay and a 10 minute walk to downtown. Distances: Beachfront, Town centre 1km, Port Vila Airport 4.5km.

**Property Features:** Pool, Spa, Restaurant, Bars (2), 24 hour reception, Boutique, Beauty salon, Parking (free), 20 rooms.

**Room Features:** Air-conditioning, Balcony, Fan, Cable TV, DVD player, Ironing facilities, Limited cooking facilities with microwave, Hair dryer.

**Max Capacity:** Studio – 2, 1 Bedroom – 3 adults or 2 adults/2 children.



## BREAKAS BEACH RESORT



Tropical Garden View Fare

Pango Peninsula, Port Vila (VLI)  
MAP PAGE 34 REF. 9

From **\$201\*<sup>^</sup>**

- ❖ Secluded adults only resort with many activities
  - ❖ Standalone fares with open-air bathrooms
  - ❖ Panoramic views from the beachside à la carte restaurant
- Includes tropical breakfast daily and welcome fruit cocktail on arrival.**

**Location:** Set on a private cove on the Pango Peninsula. Distances: Beachfront, Town centre 6km, Port Vila Airport 11km.

**Property Features:** Wi-Fi (common areas – extra charge), Cooking class (extra charge), Pool (infinity), Restaurant, Bars (2), Café, Day spa, Room service, Massage facilities, Introductory scuba dive lesson, Use of snorkelling equipment, reef shoes, kayaks and stand-up paddle boards, Laundry service, Parking (free), 59 rooms.

**Room Features:** Balcony, Fan, Tea/coffee making facilities, Ironing facilities, Hair dryer, Safe.

**Max Capacity:** Tropical Garden View Fare/Beachfront Fare – 3.

<sup>^</sup>Price includes VUV200 Tourism Levy Fee per room per night to be paid directly to the hotel by you.



SUNSET BUNGALOWS RESORT



Lagoon View

Teouma Road, Port Vila (VLI)  
MAP PAGE 34 REF. 26

From **\$271\***

- ◆ Adults only resort perfect for couples
- ◆ Private bungalows with exotic native timber interiors and cathedral ceilings
- ◆ Overwater restaurant and bungalows have beautiful lagoon views

**Includes breakfast daily and welcome drink on arrival.**

**Location:** Perched on the water's edge and 10 minutes from the centre of Port Vila. Distances: Beachfront, Town centre 1km, Port Vila Airport 3.7km.

**Property Features:** Internet facilities, Pool, Restaurant, Bar, Room service, Use of snorkelling equipment and kayaks, DVD library, Laundry service, 19 rooms.

**Room Features:** Lagoon views, Air-conditioning, Balcony, Tea/coffee making facilities, DVD player, In-room movies (free), Hair dryer, Safe.

**Max Capacity:** Lagoon View/Waterfront Superior – 3, Honeymoon Spa – 2.



TROPICANA LAGOON APARTMENTS RESORT



Deluxe Beachfront Studio

Tropicana Lane, Port Vila (VLI)  
MAP PAGE 34 REF. 5

From **\$304\***

- ◆ Located on a white sand beach with stunning views
- ◆ Overwater restaurant and sundeck
- ◆ Tropical, self-contained apartments just steps from the beach

**Includes welcome drink on arrival.**

**Location:** On a private beach with easy public transport to Port Vila. Distances: Beachfront, Town centre 1.7km, Port Vila Airport 10km.

**Property Features:** Private lagoon beach, Pool, Restaurant, Bar, Use of kayaks and stand-up paddle boards, Parking (free), 22 rooms.

**Room Features:** Air-conditioning, Plunge pool (Villas), Balcony or terrace, Tea/coffee making facilities, Limited cooking facilities, Cable TV, DVD player, Hair dryer.

**Max Capacity:** Deluxe Beachfront Studio – 3, 2 Bedroom Apartment/Deluxe Villa/ 2 Bedroom – 4, Deluxe Villa 3 Bedroom – 6.



COCO BEACH RESORT



Deluxe Garden View Fare

Paradise Cove, Port Vila (VLI)  
MAP PAGE 34 REF. 11

From **\$354\***

- ◆ Secluded couples retreat with overwater dining and stunning scenery
- ◆ Island-style fares on the beach, with partial ocean views or garden views
- ◆ Crystal clear water and a pristine coral reef just steps from your fare

**Includes tropical breakfast daily (excludes Villa Paradise Beach) and welcome drink on arrival.**

**Location:** On a private beach with stunning views, 15 minute drive to Port Vila. Distances: Beachfront, Town centre 8.5km, Port Vila Airport 13.5km.

**Property Features:** Private beach, Pool, Restaurant, Bar, Room service, Massage facilities, Use of snorkelling equipment, stand-up paddle boards and bicycles, Water taxi service to Port Vila (extra charge), Parking (free), 16 rooms.

**Room Features:** Air-conditioning (Deluxe Beachfront Fare, Villa Paradise Beach), Fan, Verandah, Tea/coffee making facilities, Hair dryer.

**Max Capacity:** Deluxe Garden View Fare/Deluxe Ocean View Fare/Deluxe Beachfront Fare – 3, Villa Paradise Beach – 8.



GRAND HOTEL AND CASINO



Harbour View

Lini Highway, Port Vila (VLI)  
MAP PAGE 34 REF. 16

From **\$376\***

- ◆ All rooms have balconies with stunning views of the harbour
- ◆ Enjoy 'a touch of Monte Carlo' at the Grand Casino
- ◆ Closest hotel to central downtown Port Vila

**Includes full buffet breakfast daily.**

**Location:** Within walking distance to markets, shopping and the esplanade. Distances: Waterfront, Town centre 100m, Port Vila Airport 6km.

**Property Features:** Casino, Pool, Restaurant, Bars (2), 24 hour room service, Day spa, Laundry service, Lift, 24 hour reception, Luggage storage, 74 rooms.

**Room Features:** Air-conditioning, Balcony, Tea/coffee making facilities, Cable TV, Ironing facilities, Hair dryer, Safe, All rooms non smoking.

**Max Capacity:** Harbour View/Deluxe Harbour View/Panorama Suite – 2, Harbour Suite/ Penthouse Suite – 4.



\*Prices are a guide only, subject to change and availability and are in New Zealand Dollars. From prices for accommodation are per room per night for 2 people, unless otherwise specified and based on the lowest room category for travel in low season. Prices for tours and transfers are per person, unless otherwise specified. For full terms and conditions including pricing and conditions, refer to the Booking Conditions at the back of this brochure.

# PORT VILA HOTELS

## HOLIDAY INN RESORT VANUATU



Garden View

Tassiriki Park, Port Vila (VLI)  
MAP PAGE 34 REF. 19

From **\$390\***

- ❖ Families will love the interactive pool area and wood-fired pizza oven
- ❖ All rooms feature deep-soaking bathtubs and furnished balconies
- ❖ Couples can retreat to the day spa or the resort's private island

**Includes full breakfast daily.**

**Location:** A 20 minute walk from Port Vila with a private lagoon. Distances: Beachfront, Town centre 1.8km, Port Vila Airport 4km.

**Property Features:** Wi-Fi (common areas – extra charge), Casino, Pools (2), Restaurant, Bars (3), 24 hour room service, Kids club 3-12 years (extra charge), Day spa, Fitness centre, Tennis courts (2), Golf course, Use of non-motorised watersports, Laundry service, Guest laundry, 24 hour reception, 148 rooms.

**Room Features:** Wi-Fi (extra charge), Air-conditioning, Fan, Tea/coffee making facilities, Ironing facilities, Hair dryer, Safe.

**Max Capacity:** Garden View/Resort/Lagoon – 3 adults or 2 adults/2 children, King Suite – 3, Overwater Villa – 2, Family Villa – 2 adults/2 children, Family Suite – 2 adults or 2 adults/3 children.



## MARINER APARTMENTS



Studio

Lini Highway, Port Vila (VLI)  
MAP PAGE 34 REF. 1

From **\$300\***

- ❖ Boutique serviced apartments with modern facilities
- ❖ Apartments with private balconies and views of the harbour
- ❖ Families will love the swimming pool and natural rock wall

**Location:** A few minutes' walk from the centre of Port Vila. Distances: Beach across road, Town centre 850m, Port Vila Airport 6km.

**Property Features:** Wi-Fi (common areas – extra charge), Pool, Laundry/dry cleaning service, Parking, 11 rooms.

**Room Features:** Wi-Fi (extra charge), Air-conditioning, Fan, Balcony, Kitchen with microwave, Tea/coffee making facilities, Cable TV, Hair dryer.

**Max Capacity:** Studio – 2, 2 Bedroom/Penthouse – 6.



## PARADISE COVE RESORT



1 Bedroom Villa

Port Vila Bay, Port Vila (VLI)  
MAP PAGE 34 REF. 24

From **\$429\*^**

- ❖ Private jetty and beach with hammocks and loungers
- ❖ Beachside saltwater pool
- ❖ Spacious open-plan villas set among gardens

**Includes light breakfast daily.**

**Location:** 15 minutes' drive from downtown Port Vila. Distances: Beachfront, Town centre 7.6km, Port Vila Airport 13.4km.

**Property Features:** Free Wi-Fi (common areas), Pool, Restaurant, Bar, Laundry service, Massage facilities, Use of snorkelling equipment, kayaks, stand-up paddle boards and bicycles, Parking (free), 10 rooms.

**Room Features:** Air-conditioning, Verandah, Hammock, Kitchen with microwave, Hair dryer.

**Max Capacity:** 1 Bedroom Villa – 2, 2 Bedroom Villa – 4.

**^Minimum 2 night stay applies.**



\* Prices are a guide only, subject to change and availability and are in New Zealand Dollars. From prices for accommodation are per room per night for 2 people, unless otherwise specified and based on the lowest room category for travel in low season. Prices for tours and transfers are per person, unless otherwise specified. For full terms and conditions including pricing and conditions, refer to the Booking Conditions at the back of this brochure.



**MANGOES RESORT**



Garden View Bungalow

Rue De Wales, Port Vila (VLI)  
MAP PAGE 34 REF. 21

From **\$238\***

- ❖ Adults only resort in an intimate cliff top setting
- ❖ Boutique bungalows, some with private plunge pools
- ❖ Mangoes Restaurant offers an innovative menu and delightful cocktails

**Includes light breakfast daily and free Wi-Fi up to 250 megabytes per room per stay.**

**Location:** Overlooking Erakor Lagoon and a short walk to the town centre. Distances: Beach 3km, Town centre 1km, Port Vila Airport 5km.

**Getting There:** Coach transfers from Port Vila Airport must be booked in conjunction with your accommodation. **\$25\*** per person one way.

**Property Features:** Free Wi-Fi (restaurant only), Pools (3), Restaurant, Bar, Room service, Massage facilities, Gym (extra charge), Tennis court, Laundry facilities, 29 rooms.

**Room Features:** Wi-Fi (extra charge), Fan, Balcony, Tea/coffee making facilities, Private Pool (Lagoon View Pool Bungalow, Garden View Pool Apartment), Kitchen (Garden View Pool Apartment), In-room movies (free), Cable TV, Ironing facilities, Hair dryer.

**Max Capacity:** Garden View Bungalow/Lagoon View Pool Bungalow/Garden View Pool Apartment – 2.



**NASAMA RESORT**



Beachview Studio

Pango Road, Port Vila (VLI)  
MAP PAGE 34 REF. 2

From **\$186\***

- ❖ Large private balconies with panoramic ocean views
- ❖ Self-contained beachside apartments
- ❖ Covered barbecue facilities offer an alternative to in-room dining

**Location:** A five minute walk away from a surf beach and close to the centre of Port Vila. Distances: Beachfront, Town centre 4.1km, Port Vila Airport 10km.

**Property Features:** Pools (2 – including children's), Restaurants (2), Bars (2), Barbecue area, Massage facilities, Gym, Use of snorkelling equipment and kayaks, DVD library, Convenience store, Guest laundry, Library, Table tennis, 43 rooms.

**Room Features:** Air-conditioning, Fan, Balcony or patio, Kitchen with microwave, Tea/coffee making facilities, Cable TV, Docking station, Bluetooth speakers, DVD player, Ironing facilities, Hair dryer, Safe.

**Max Capacity:** Beachview Studio – 3 adults/1 child, Luxury Oceanfront Suite – 2, 2 Bedroom Seaview – 6.



\*Prices are a guide only, subject to change and availability and are in New Zealand Dollars. From prices for accommodation are per room per night for 2 people, unless otherwise specified and based on the lowest room category for travel in low season. Prices for tours and transfers are per person, unless otherwise specified. For full terms and conditions including pricing and conditions, refer to the Booking Conditions at the back of this brochure.

# PORT VILA HOTELS

## POPPYS ON THE LAGOON RESORT



Lagoon View Studio



Erakor Lagoon, Port Vila (VLI)  
MAP PAGE 34 REF. 25

From **\$326\***

- ❖ Dedicated adults only area and family zones
- ❖ LEAF Restaurant uses fresh, locally grown organic produce
- ❖ Spacious apartments feature full kitchens and furnished balconies

**Includes light breakfast daily, welcome juice and tea & coffee basket on arrival.**

**Location:** On the shores of Erakor Lagoon and only a five minute walk to Port Vila. Distances: Beachfront, Town centre 750m, Port Vila Airport 5km.

**Property Features:** Free Wi-Fi (common areas), Pools (3), Restaurant, Bar, Café, Kids club 3-10 years (extra charge), Day spa, Kayaks, Use of non-motorised watersports, Barbecue area, 31 rooms.

**Room Features:** Wi-Fi (extra charge), Air-conditioning, Fan, Balcony, Kitchen, Cable TV, DVD player, All rooms non smoking.

**Max Capacity:** Lagoon View Studio/Garden View Bungalow/Beachfront Spa Bungalow – 2, 2 Bedroom Lagoon View Suite – 4, 3 Bedroom Lagoon View Apartment – 7, 3 Bedroom Beachfront Villa – 6.



## RAMADA RESORT BY WYNDHAM PORT VILA



Studio

Erakor Lagoon, Port Vila (VLI)  
MAP PAGE 34 REF. 3

From **\$498\***

- ❖ Perfect for couples and families with lots of watersport activities
- ❖ Resort opens onto a private section of sandy beach
- ❖ Self-contained spacious apartments with cooking facilities

**Includes full buffet breakfast daily.**

**Location:** On the cliffs of Erakor Lagoon and 15 minutes from downtown Port Vila. Distances: Beachfront, Town centre 1.6km, Port Vila Airport 5km.

**Property Features:** Pools (3 – including children's), Spa, Restaurant, Bars (3 – including swim-up), Kids club 3-12 years (extra charge), Chapel, Use of non-motorised watersports, 80 rooms.

**Room Features:** Air-conditioning, Balcony, Limited cooking facilities, Cable TV, Hair dryer, Laundry (2 Bedroom), Ironing facilities, Safe.

**Max Capacity:** Studio/Junior Suite – 2 adults/2 children, Junior Suite Interconnecting – 6, 2 Bedroom – 4.



\* Prices are a guide only, subject to change and availability and are in New Zealand Dollars. From prices for accommodation are per room per night for 2 people, unless otherwise specified and based on the lowest room category for travel in low season. Prices for tours and transfers are per person, unless otherwise specified. For full terms and conditions including pricing and conditions, refer to the Booking Conditions at the back of this brochure.

**ERATAP BEACH RESORT**



1 Bedroom Beachfront Villa

Eratap Beach, Port Vila (VLI)  
MAP PAGE 34 REF. 13

From **\$675**<sup>\*\*^</sup>

- ❖ Access to three private beaches
- ❖ Private beachfront villas with sundecks and ocean views
- ❖ Stunning beachfront restaurant with on sand dining

**Includes full breakfast daily.**

**Location:** Set on 12 acres only 20 minutes from Port Vila. Distances: Beachfront, Town centre 13.9km, Port Vila Airport 20km.

**Getting There:** Free return coach transfers from Port Vila Airport.

**Property Features:** Internet facilities, Pool, Restaurant, Bar, 24 hour reception, Day spa, Gym, Shop, Use of snorkelling equipment, kayaks, stand-up paddle boards, bicycles and motorised boats, Tennis court, 14 rooms.

**Room Features:** Free Wi-Fi, Air-conditioning, Balcony, Tea/coffee making facilities, Docking station, Hair dryer, Ironing facilities, Safe.

**Max Capacity:** 1 Bedroom Beachfront Villa/1 Bedroom Villa with Pool/1 Bedroom Waterfront Villa/Honeymoon Villa – 3, 2 Bedroom/Deluxe Villas – 5, 3 Bedroom Villa – 6.

**^ Minimum 3 night stay applies.**



**THE HAVANNAH VANUATU**



Garden Villa

Samoa Point, Havannah Harbour (VLI)  
MAP PAGE 34 REF. 17

From **\$923**<sup>\*\*^</sup>

- ❖ Exclusively for couples
- ❖ Complimentary sunset cruise for guests
- ❖ Magnificent split-level lagoon pool with ocean views

**Includes breakfast, lunch, afternoon tea and dinner daily, welcome drink on arrival and invitation to manager's cocktail party.**

**Location:** Set on the white sand peninsula of Samoa Point. Distances: Beachfront, Town centre 29.7km, Port Vila Airport 25km.

**Getting There:** Free return coach transfers from Port Vila Airport.

**Property Features:** Pool, Private beach dining, Restaurant, Bar, Room service, Thalgo Day Spa, Tennis court, Guest lounge, Resort shop, Use of non-motorised watersports, DVD library, Laundry service, Free shuttle to Port Vila twice daily, 17 rooms.

**Room Features:** Air-conditioning, Fan, Tea/coffee making facilities, Mini bar (on request), Docking station, In-room movies (free), Outdoor day bed, Outdoor dining gazebo, DVD player, Ironing facilities, Bathrobes, Safe.

**Max Capacity:** Garden Villa/Lagoon Pool Villa/Waterfront Villa/Deluxe Waterfront Villa – 2.

**^ Minimum 2 night stay applies.**



Deluxe Waterfront Villa



\*Prices are a guide only, subject to change and availability and are in New Zealand Dollars. From prices for accommodation are per room per night for 2 people, unless otherwise specified and based on the lowest room category for travel in low season. Prices for tours and transfers are per person, unless otherwise specified. For full terms and conditions including pricing and conditions, refer to the Booking Conditions at the back of this brochure.

# PORT VILA HOTELS

## IRIRIKI ISLAND RESORT & SPA



Iririki Island, via Port Vila (VLI)  
MAP PAGE 34 REF. 20

From **\$429\***

- ❖ Set on 69 acres of lush tropical gardens on a private island
- ❖ Family friendly resort with daily activities and kids club
- ❖ Four-tier pool with a swim-up bar and sun lounges
- ❖ Complimentary ferry service to Port Vila, 24 hours, 7 days a week
- ❖ Enjoy a flutter on a blackjack table located within shallow beach water
- ❖ Themed dinners on select nights include live entertainment

**Includes full buffet breakfast daily and welcome drink on arrival.**

**Location:** An island haven located only a four minute scenic ferry ride from Port Vila.  
Distances: Beachfront, Town centre 2.5km, Port Vila Airport 12km.

**Getting There:** Free return ferry transfers from Port Vila to the resort.

**Property Features:** Casino, Pools (2), Restaurants (5), Bars (3), Café, Kids club 4-12 years (extra charge), Iririki Spa (day spa), Fitness centre, Tennis courts (2), Use of non-motorised watersports, Games room, 131 rooms.

**Room Features:** Air-conditioning, Fan, Balcony, Tea/coffee making facilities, Limited cooking facilities (Deluxe Pool View), Spa (Deluxe Pool View), In-room movies (free), Washer/dryer (Deluxe Pool View).

**Max Capacity:** Island Fare/Premium Waterfront Fare/Premium Overwater Fare – 2, Deluxe Pool View/Oceanview/Penthouse – 4.



Island Fare



Oceanview



\*Prices are a guide only, subject to change and availability and are in New Zealand Dollars. From prices for accommodation are per room per night for 2 people, unless otherwise specified and based on the lowest room category for travel in low season. Prices for tours and transfers are per person, unless otherwise specified. For full terms and conditions including pricing and conditions, refer to the Booking Conditions at the back of this brochure.

**THE TERRACES BOUTIQUE APARTMENTS**



Terrace Studio

Rue De Wales, Port Vila (VLI)  
MAP PAGE 34 REF. 4

From **\$368\***

- ❖ Luxurious resort built on a cliff top overlooking the lagoon
- ❖ Apartments feature large beds and stone baths that fill from the ceiling
- ❖ Some apartments have private infinity plunge pools

**Includes tropical breakfast daily.**

**Location:** A short drive from the airport and a 10 minute walk to Port Vila. Distances: Beach 3km, Town centre 900m, Port Vila Airport 8km.

**Getting There:** Coach transfers from Port Vila Airport must be booked in conjunction with your accommodation. **\$25\*** per person one way.

**Property Features:** Pool, Restaurant, Room service, Gym, Tennis court, Guest laundry, 16 rooms.

**Room Features:** Air-conditioning, Fan, Plunge pool (except Terrace Studio), Balcony, Lagoon views, Kitchen with microwave and dishwasher, Tea/coffee making facilities, DVD player, In-room movies (free), Hair dryer, Safe.

**Max Capacity:** Terrace Studio – 2, Terrace 1 Bedroom – 3, Terrace 2 Bedroom – 5.



**VALE VALE BEACHFRONT VILLAS**



Vale Vale 1 Bedroom Villa

Pango, Port Vila (VLI)  
MAP PAGE 34 REF. 6

From **\$511\***

- ❖ Private villas open onto the sandy beach
- ❖ Large exterior living spaces and personal plunge pools
- ❖ Rejuvenating massage on your villa deck available

**Includes tropical breakfast daily, 30 minute massage per person per stay and use of local phone with VUV500 credit.**

**Location:** Set on a beach off the Pango Peninsula between coral reefs. Distances: Beachfront, Town centre 6.5km, Port Vila Airport 11km.

**Property Features:** Room service, Guided tour of Turtle Sanctuary, Use of kayaks, paddle boards and snorkelling equipment, Barbecue area, Laundry service, Parking (free), 13 rooms.

**Room Features:** Air-conditioning, Lagoon views, Private plunge pool, Balcony, Kitchen, Mini bar, Docking station, Cable TV, DVD player.

**Max Capacity:** Vale Vale 1 Bedroom Villa/Vale Vale Honeymoon Villa – 2, Vale Vale 2 Bedroom Villa – 4.



**WARWICK LE LAGON – VANUATU**



Garden View

Erakor Lagoon, Port Vila (VLI)  
MAP PAGE 34 REF. 27

From **\$525\***

- ❖ Family friendly resort with a kids club, games room and cinema
- ❖ Sports lovers will enjoy volleyball, golf and tennis
- ❖ Spacious villas with private furnished balconies

**Includes full breakfast daily and welcome drink on arrival.**

**Location:** A short drive to the centre of Port Vila and steps away from the beach. Distances: Beachfront, Town centre 3.1km, Port Vila Airport 8km.

**Property Features:** Pools (3), Restaurants (3), Bar, Kids club 3-12 years (extra charge), Day spa, Gym, Golf course, Tennis courts (2), Guest laundry, 24 hour reception, 142 rooms.

**Room Features:** Wi-Fi (extra charge), Air-conditioning, Fan, Balcony, Mini bar, Cable TV, In-room movies (free), Ironing facilities, Hair dryer, All rooms non smoking.

**Max Capacity:** Garden View/Lagoon View – 3 adults or 2 adults/2 children, Garden Bungalow/Lagoon Bungalow – 3, Shefa Pool Villa/Efate Pool Villa/Pacific Pool Villa – 2.



\*Prices are a guide only, subject to change and availability and are in New Zealand Dollars. From prices for accommodation are per room per night for 2 people, unless otherwise specified and based on the lowest room category for travel in low season. Prices for tours and transfers are per person, unless otherwise specified. For full terms and conditions including pricing and conditions, refer to the Booking Conditions at the back of this brochure.

# ESPIRITU SANTO HOTELS

## CORAL QUAYS FISH & DIVE RESORT



Garden Bungalow

Luganville, Espiritu Santo (SON)  
MAP PAGE 34 REF. 8

From **\$192\***

- ❖ Selected bungalows are steps from the private beach and jetty
- ❖ Underwater adventure trail created for guests to snorkel or dive
- ❖ Snorkelling safaris and fishing charters available

**Includes light breakfast daily.**

**Location:** Set in lush, tropical surroundings. Distances: Beach 50m, Town centre 5.3km, Pekoa Airport 8km.

**Getting There:** Coach transfers from Pekoa Airport must be booked in conjunction with your accommodation. **\$18\*** per adult one way. Child prices on application.

**Property Features:** Pool, Restaurant, Bar, Private beach, Private jetty, Use of kayaks, Dive centre, Massage facilities, Parking (free), 18 rooms.

**Room Features:** Air-conditioning, Fan, Balcony, Tea/coffee making facilities.

**Max Capacity:** Garden Bungalow – 3, Superior Bungalow – 2 adults/1 child.



## THE ESPIRITU



Standard

Luganville, Espiritu Santo (SON)  
MAP PAGE 34 REF. 8

From **\$192\***

- ❖ Modern and contemporary rooms cater for both couples and families
- ❖ Washroom and storage facilities for diving enthusiasts
- ❖ Poolside sports bar with a billiards table and hammocks

**Includes tropical breakfast daily.**

**Location:** In the heart of Luganville close to cafés and shops. Distances: Beach 7km, Town centre 230m, Pekoa Airport 8.2km.

**Getting There:** Coach transfers from Pekoa Airport must be booked in conjunction with your accommodation. **\$18\*** per adult one way. Child prices on application.

**Property Features:** Pool, Restaurant, Bar, Billiards table, Room service, Café, Massage facilities, Laundry service, 13 rooms.

**Room Features:** Air-conditioning, Tea/coffee making facilities, In-room movies (free), DVD player, Safe.

**Max Capacity:** Standard/Superior/Deluxe Balcony – 2, Deluxe Family Balcony – 4.



## AORE ISLAND RESORT



Studio Garden View

Aore Island, Espiritu Santo (SON)  
MAP PAGE 34 REF. 7

From **\$396\*^**

- ❖ Secluded adults only and family bungalows available
- ❖ Aore Day Spa offers traditional Melanesian treatments
- ❖ Open-air Nakamal restaurant overlooks the ocean

**Includes tropical breakfast daily and welcome drink on arrival.**

**Location:** Sits overlooking Espiritu Santo. Distances: Beachfront, Town centre 38.6km, Pekoa Airport 5km.

**Getting There:** Coach transfers from Pekoa Airport must be booked in conjunction with your accommodation. **\$42\*** per adult return. Child prices on application.

**Property Features:** Pool, Restaurant, Bar, Day spa, Evening entertainment, Use of stand-up paddle boards, kayaks and snorkelling equipment, Bicycle hire, 18 rooms.

**Room Features:** Fan, Balcony, Tea/coffee making facilities, Mini bar, Ironing facilities, Hair dryer.

**Max Capacity:** Studio Garden View/Studio Beachfront Bungalow – 2.

**^Minimum 2 night stay applies. Price includes VUV100 Tourism Levy Fee per room per night to be paid directly to the hotel by you.**



VILLAGE DE SANTO RESORT



Deluxe Village Suite

Luganville, Espiritu Santo (SON)  
MAP PAGE 34 REF. 8

From **\$192**<sup>\*^</sup>

- ❖ Modern open-plan apartments great for families
- ❖ Private balconies overlooking the lagoon pool and gardens
- ❖ Ethically conscious resort with a focus on sustainable tourism

**Includes light breakfast daily and welcome drink on arrival.**

**Location:** A short walk from the town of Luganville positioned on the Segon Canal. Distances: Beachfront, Town centre 2.2km, Pekoa Airport 7.5km.

**Getting There:** Coach transfers from Pekoa Airport must be booked in conjunction with your accommodation. **\$17\*** per adult one way. Child prices on application.

**Property Features:** Free Wi-Fi (common areas), Pool, Restaurant, Bar, Café, Kids club 5-12 years (extra charge), In-room massage, Laundry service (extra charge), Parking (free), 16 rooms.

**Room Features:** Balcony, Fan, Mini bar (on request), Microwave, Ironing facilities, Tea/coffee making facilities.

**Max Capacity:** Deluxe Village Suite – 4 adults or 3 adults/2 children.

<sup>^</sup>Price includes VUV100 Tourism Levy Fee per room per night to be paid directly to the hotel by you.



BARRIER BEACH RESORT



Garden Fare

Sataoutou, Espiritu Santo (SON)  
MAP PAGE 34 REF. 8

From **\$480**<sup>\*^</sup>

- ❖ Fares with private decks overlooking the ocean
- ❖ Free bicycle hire to explore nearby waterholes
- ❖ Choose from two beachside lounge bars

**Includes light breakfast daily.**

**Location:** On the beautiful island of Espiritu Santo. Distances: Beachfront, Town centre 49.7km, Pekoa Airport 15.7km.

**Getting There:** Free return coach transfers from Pekoa Airport.

**Property Features:** Free Wi-Fi, Restaurant, Bar, Room service, Moyyan Day Spa, Library, Terrace, Non smoking, Free airport transfers (available if pre-booked), Parking (free), 18 rooms.

**Room Features:** Air-conditioning, Fan, Deck, Tea/coffee making facilities, Mini bar, Hair dryer, Safe.

**Max Capacity:** Garden Fare/Seaview Garden Fare/Garden Suite – 2.

<sup>^</sup>Minimum 2 night stay applies. Price includes VUV136 Tourism Levy Fee per person per night to be paid directly to the hotel by you.



RATUA ISLAND RESORT & SPA



Deluxe Beachfront Villa

Luganville, Espiritu Santo (SON)  
MAP PAGE 34 REF. 7

From **\$1182**<sup>\*^</sup>

- ❖ 146 acre private island resort with lush gardens and white sand beach
- ❖ Villas have rustic furnishings and are steps from the bay
- ❖ Overwater antique day spa and vintage cinema house

**Includes breakfast, lunch and dinner daily and welcome drink on arrival.**

**Location:** Set on a private island off the coast of Aore Island. Distances: Beachfront, Town centre 61.2km, Pekoa Airport 5km.

**Getting There:** Coach and launch transfers from Pekoa Airport must be booked in conjunction with your accommodation. **\$88\*** per adult return. Child prices on application.

**Property Features:** Yacht club, Restaurant, Bar, Cinema, Games room, Day spa, Horseback riding, Use of stand-up paddle boards, kayaks, snorkelling equipment and bicycles, 15 rooms.

**Room Features:** Ocean views, Terrace, Fan, Bathrobes, Mini bar, Day beds, Safe.

**Max Capacity:** Deluxe Beachfront Villa – 2, Deluxe Fish Village 2 Bedroom Family Villa/ Deluxe Beachfront 2 Bedroom Family Marquee – 4.

<sup>^</sup>Minimum 2 night stay applies.



\*Prices are a guide only, subject to change and availability and are in New Zealand Dollars. From prices for accommodation are per room per night for 2 people, unless otherwise specified and based on the lowest room category for travel in low season. Prices for tours and transfers are per person, unless otherwise specified. For full terms and conditions including pricing and conditions, refer to the Booking Conditions at the back of this brochure.

# TANNA ISLAND HOTELS

## FRIENDLY BEACH VANUATU



Beachfront Fare

Lowalcas Cove, Tanna Island (TAH)  
MAP PAGE 34 REF. 15

From **\$348\***

- ❖ Spacious villas facing a beautiful volcanic black sand beach
  - ❖ A short drive to hot springs, an active volcano and local villages
  - ❖ Eco villas made from sustainable materials including a coral floor en suite
- Includes light breakfast daily.**

**Location:** Six kilometres from Mount Yasur Volcano on a secluded beach cove.  
Distances: Beachfront, Town centre 22.6km, Tanna Airport 30km.

**Getting There:** By air from Port Vila to Tanna Airport and complimentary 90 minute 4WD return transfers to the resort. Ask your travel agent for details.

**Property Features:** Restaurant, Bar, Barbecue area, Massage facilities, 4 rooms.

**Room Features:** Balcony, Hammock, Mosquito nets, Private facilities.

**Max Capacity:** Beachfront Fare – 4.



## WHITE GRASS OCEAN RESORT & SPA



Ocean View Bure

White Sand Road, Lenakel, Tanna Island (TAH)  
MAP PAGE 34 REF. 15

From **\$369\***

- ❖ Natural reef swimming holes are just steps away
  - ❖ Complimentary bicycles to explore nearby beaches and villages
  - ❖ Unique Nabisa Day Spa uses natural volcanic materials found on the island
- Includes tropical breakfast daily and guided snorkelling tour to Turtle Reef.**

**Location:** A short drive from Tanna Airport and overlooking the South Pacific Ocean.  
Distances: Beachfront, Town centre 11km, Tanna Airport 2km.

**Getting There:** By air from Port Vila to Tanna Airport and complimentary five minute return transfers to the resort. Ask your travel agent for details.

**Property Features:** Pool, Restaurant, Bar, Bicycle hire, Nabisa Day Spa, Mini golf, Use of snorkelling equipment, Dive centre, Beach volleyball, Badminton, Guest laundry, 20 rooms.

**Room Features:** Ocean views, Fan, Patio, Tea/coffee making facilities.

**Max Capacity:** Ocean View Bure – 3, 1 Bedroom Family Garden Bure/2 Bedroom Family Garden Bure/2 Bedroom Family Villa – 5.



\* Prices are a guide only, subject to change and availability and are in New Zealand Dollars. From prices for accommodation are per room per night for 2 people, unless otherwise specified and based on the lowest room category for travel in low season. Prices for tours and transfers are per person, unless otherwise specified. For full terms and conditions including pricing and conditions, refer to the Booking Conditions at the back of this brochure.





Makaha'a Island



## TONGA

Tonga is a kingdom of white sandy beaches, coconut groves and some of the best fishing in the South Pacific. Make your way around each of the three main island groups for incredible and unique experiences. You could find yourself snorkelling with whales one minute and watching a traditional dance performance the next.

### SEE

- See the mysterious Ha'amonga 'a Maui Trilithon, known as the Polynesian Stonehenge
- View the spectacular family owned 'Ene'io Botanical Garden in Tu'anekivale village

### DO

- Hire a kayak for the day and explore the offshore islands where you may spot whales, dolphins and turtles
- Walk along Tongatapu's south coast to view the amazing Mapu'a 'a Vaea Blowholes where water catapults 30 metres into the air

### EAT & DRINK

- Enjoy a feast of locally caught seafood and whole pig on a spit while watching a traditional cultural performance
- Savour sweet tropical fruit all year round including coconuts, bananas and papayas

### WHAT'S ON

**Heilala Festival**  
22 June to 11 July

**Tonga National Day**  
4 November

REF.	HOTELS	PAGE
1	Fafa Island Resort ◆◆◆◆	52
2	Liku'alofa Beach Resort ◆◆◆	51
3	Matafonua Lodge ◆◆◇	53
4	Mystic Sands Beach Bungalows ◆◆◆	53
5	Royal Sunset Island Resort ◆◆◆	51

REF.	HOTELS	PAGE
3	Sandy Beach Resort ◆◆◆◆	53
6	Tanoa International Dateline ◆◆◆◆	52
4	The Tongan Beach Resort ◆◆◆◇	53
7	The Waterfront Lodge ◆◆◆	51

# TONGA TOURS



## EVENING SUNSET & OHOLEI TOUR

Be welcomed with music and Tonga's great outdoors as you arrive at Oholei Beach Resort. See the traditional 'Umu' known as the Tongan underground oven. Enjoy a Tongan feast of succulent pig, fresh fish with coconut cream and a range of other delicious delicacies. Feel the rhythm of Tonga with a performance by traditional dancers. You will also have the opportunity to wander along the sandy coastline or visit the caves.

### Includes:

- Dinner
- Cultural entertainment
- Return transfers from Nuku'alofa accommodation

**Duration:** 5 hours

**Departs:** Wed, Fri from Nuku'alofa at 5:30pm

	Adult	Child 6-11 yrs
1 Apr 20 – 31 Mar 21	<b>\$192*</b>	<b>\$66*</b>



## Fafa Island Resort Day Trip

Travel to Fafa Island and enjoy a half day of total serenity and relaxation.

Here you can snorkel the reef, swim in the crystal clear waters, sunbathe on the white sandy beach and enjoy a delicious island style lunch. Discover the abundant water activities (snorkel gear and paddle boards extra charge) or simply stroll around this island paradise.

### Includes:

- Island style lunch
- Expert guide
- Return boat transfer to Fafa Island Resort
- Return transfers from Nuku'alofa accommodation

**Duration:** 5 hours

**Departs:** Daily from Nuku'alofa at 11am

	Adult/Child
1 Apr 20 – 31 Mar 21	<b>\$182*</b>



## WHALE WATCH, SWIM & SNORKEL

Have an amazing experience swimming with the gentle giants of the sea, the Humpback whale. From July through to October witness the whales and their young up close. Enjoy the day on a fast, safe and comfortable custom built whale watching and dive boat. Tonga is one of the only places in the world where you can swim with Humpback whales, an encounter you will remember forever. Plus experience some of the best fishing, snorkelling and scuba diving Tonga has to offer.

### Includes:

- Use of snorkelling equipment and wetsuits
- Expert guide • Lunch and refreshments
- Maximum 8 passengers
- Return transfers from Nuku'alofa accommodation

**Duration:** 7 hours

**Departs:** Daily from Nuku'alofa at 9am (Jul – Oct)

	Adult	Child 4-9 yrs
1 Jul – 31 Oct 20	<b>\$450*</b>	<b>\$225*</b>



## HA'APAI WHALE WATCH

Get up close and personal with majestic Humpback whales on this full day tour.

See the whales frolic and play in their natural environment and have the unique opportunity to swim with these gentle giants of the deep, before enjoying a delicious lunch.

### Includes:

- Whale watching full day cruise
- Use of snorkelling equipment
- Lunch
- Expert guide
- Return transfers from Nuku'alofa accommodation

**Duration:** 7 hours

**Departs:** Mon to Sat from Matafonua or Sandy Beach Resort at 9am

**Not suitable for children under 12 yrs.**

	Adult
1 Apr 20 – 31 Mar 21	<b>\$524*</b>



## VAVA'U CLASSIC TOUR 8 DAYS

**Day 1: Vava'u** Arrive at Lupepau'u Airport and be transferred to your accommodation. Overnight at the Boathouse Apartments.

**Day 2: Vava'u to Vaka'eitu Island (LD)** Depart for Vaka'eitu Island stopping to snorkel at Swallows Cave. Enjoy lunch and swimming at Kapa Island. Stay the next two nights on Vaka'eitu Island. Paddling time: 3 – 4 hours.

**Day 3: Nuapapu & Hunga Islands (BLD)** Arrive on Nuapapu Island and visit a primary school followed by a hike to the island's summit. Paddling time: 2 hours.

**Day 4: Vaka'eitu Island to Taunga Island (BLD)** Travel to Taunga Island. Watch for sealife. Enjoy a hosted feast. Stay the next three nights on Taunga Island. Paddling time 3 – 4 hours.

**Day 5: Taunga Island (BLD)** Explore the islands at leisure.

**Day 6: Eueiki Island & Euakafa Island (BLD)** Canoe to Eueiki Island for swimming and lunch, and Euakafa Island for snorkelling and a bonfire. Paddling time 1 – 2 hours.

**Day 7: Taunga Island to Vava'u (BL)** Hike through lush bush this morning to the site of a royal tomb. Stop for lunch at Mala Island. Enjoy a farewell dinner. Overnight at Boathouse Apartments. Paddling time 3 – 4 hours.

**Day 8: Vava'u** Be transferred back to Lupepau'u Airport.

(B = breakfast, L = lunch, D = dinner)

### Includes:

- 5 nights camping accommodation
- 2 nights hotel accommodation • Meals as specified
- Use of kayaks and snorkelling equipment
- Traditional Tongan feast • Expert guide
- Return airport transfers from Lupepau'u Airport

**Moderate level of fitness required.**

**Departs:** 2020: Apr 6 • May 18 • Jun 1, 15 • Jul 6, 13  
• Aug 10, 24 • Sep 14 • Oct 12 • Nov 9  
• Dec 7 2021: Jan 18 • Feb 15 • Mar 1

	Adult	Child 6-12 yrs
1 Apr 20 – 31 Mar 21	<b>\$2895*</b>	<b>\$2606*</b>

\* Prices are a guide only, subject to change and availability and are in New Zealand Dollars. From prices for accommodation are per room per night for 2 people, unless otherwise specified and based on the lowest room category for travel in low season. Prices for tours and transfers are per person, unless otherwise specified. For full terms and conditions including pricing and conditions, refer to the Booking Conditions at the back of this brochure.

LIKU'ALOFA BEACH RESORT



Garden View Fale

Kanokupolu, Tongatapu (TBU)  
MAP PAGE 49 REF. 2

From **\$150\***

- ❖ The resort hosts a cultural show every Wednesday and Friday night
- ❖ Stunning ocean views from the Sunset Restaurant and Treetop Bar
- ❖ Bright spacious beachfront or tropical garden rooms

**Includes tropical breakfast daily, coconut demonstration and kava ceremony.**

**Location:** Sitting on the beachfront on the west coast of Tongatapu. Distances: Beachfront, Town centre 19.3km, Fua'amotu Airport 32.7km.

**Getting There:** Transfers from Fua'amotu Airport must be booked in conjunction with your accommodation. **\$45\*** per adult one way. Child prices on application.

**Property Features:** Free Wi-Fi (common areas), Restaurant, Bar, Pool, Use of snorkelling equipment, stand-up paddle boards and kayaks, Guest laundry, Parking (free), 15 rooms.

**Room Features:** Wi-Fi (extra charge), Fan, Balcony, Tea/coffee making facilities.

**Max Capacity:** Garden View Fale/Ocean View Fale – 3 adults or 2 adults/2 children.



ROYAL SUNSET ISLAND RESORT



Budget Fale

Atata Island, via Tongatapu (TBU)  
MAP PAGE 49 REF. 5

From **\$199\***

- ❖ Traditional fales situated on the beach
- ❖ Open-air Polynesian restaurant with local entertainment
- ❖ Large bungalows to accommodate families

**Includes light breakfast daily.**

**Location:** Set on Atata Island surrounded with tropical gardens. Distances: Beachfront, Fua'amotu Airport 20km.

**Getting There:** Coach and launch transfers from Fua'amotu Airport must be booked in conjunction with your accommodation. **\$57\*** per adult one way. Child prices on application.

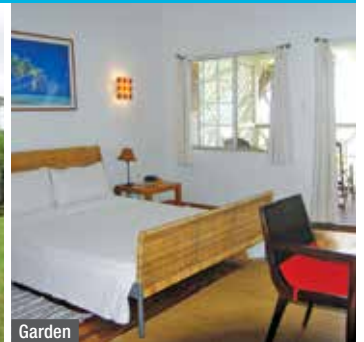
**Property Features:** Free Wi-Fi (common areas), Pool, Restaurant, Bar, Tennis court, Sundeck, Use of non-motorised watersports, Laundry service, 21 rooms.

**Room Features:** Ocean views, Fan, Balcony, Tea/coffee making facilities.

**Max Capacity:** Budget Fale/Standard Fale/Family Fale – 6, 2 Bedroom Mini Suite – 4, Superior Western – 2 adults/1 child.



THE WATERFRONT LODGE



Garden

Vuna Road, Nuku'alofa, Tongatapu (TBU)  
MAP PAGE 49 REF. 7

From **\$200\***

- ❖ A 20 minute stroll to downtown Nuku'alofa
- ❖ Colonial-style lodge with beautiful ocean views
- ❖ Artists from around the Pacific meet regularly to show their pieces

**Includes light breakfast daily.**

**Location:** On the Maufanga waterfront near the Queen Salote Wharf. Distances: Waterfront, Town centre 2km, Fua'amotu Airport 25km.

**Getting There:** Transfers from Fua'amotu Airport must be booked in conjunction with your accommodation. Ask your travel agent for details.

**Property Features:** Restaurant, Room service, Laundry service, Parking (free), 8 rooms.

**Room Features:** Wi-Fi (extra charge), Air-conditioning, Balcony, Tea/coffee making facilities, Cable TV, Ironing facilities, Hair dryer.

**Max Capacity:** Garden/Seaview – 3.

\*Prices are a guide only, subject to change and availability and are in New Zealand Dollars. From prices for accommodation are per room per night for 2 people, unless otherwise specified and based on the lowest room category for travel in low season. Prices for tours and transfers are per person, unless otherwise specified. For full terms and conditions including pricing and conditions, refer to the Booking Conditions at the back of this brochure.

# TONGATAPU HOTELS

## FAFA ISLAND RESORT



Superior Fale



Fafa Island, via Tongatapu (FAU)  
MAP PAGE 49 REF. 1

From **\$343\***

- ❖ Surrounded by secluded white sand beaches and nature trails
- ❖ Restaurant and open-air bar located directly on the beach
- ❖ Private bungalows offer furnished patios and open-air garden showers

**Location:** Sitting on an 18 acre private island surrounded by a lagoon and beaches. Distances: Beachfront, Fua'amotu Airport 32km.

**Getting There:** Coach and launch transfers from Fua'amotu Airport must be booked in conjunction with your accommodation. **\$73\*** per person one way.

**Property Features:** Free Wi-Fi (common areas), Restaurant, Bar, Use of non-motorised watersports, Guest laundry, Free scheduled launch shuttle to Nuku'alofa, 14 rooms.

**Room Features:** Ocean views, Fan, Patio, Tea/coffee making facilities, Bathrobes, Hair dryer, All rooms non smoking.

**Max Capacity:** Superior Fale/2 Bedroom Deluxe Fale – 4, 1 Bedroom Deluxe Fale/Honeymoon Fale – 2.



## TANOA INTERNATIONAL DATELINE



Superior



Vuna Road, Nuku'alofa, Tongatapu (TBU)  
MAP PAGE 49 REF. 6

From **\$225\***

- ❖ Walking distance to the town centre and attractions
- ❖ Bright spacious rooms with modern comforts
- ❖ Large swimming pool with loungers

**Includes full buffet breakfast daily.**

**Location:** Close to the port and the Royal Palace. Distances: Beachfront, Town centre 850m, Fua'amotu Airport 22.5km.

**Getting There:** Coach and launch transfers from Fua'amotu Airport must be booked in conjunction with your accommodation. **\$25\*** per person one way.

**Property Features:** Pools (2), Restaurants (2), Bar, 24 hour room service, Fitness centre, Massage facilities, Resort shop, Guest laundry, Laundry service, 24 hour reception, Lift, 122 rooms.

**Room Features:** Ocean views, Balcony, Air-conditioning, Tea/coffee making facilities, Cable TV, Hair dryer, Ironing facilities, Safe, All rooms non smoking.

**Max Capacity:** Superior/Executive Room/Executive Suite/Presidential Suite – 3.



\* Prices are a guide only, subject to change and availability and are in New Zealand Dollars. From prices for accommodation are per room per night for 2 people, unless otherwise specified and based on the lowest room category for travel in low season. Prices for tours and transfers are per person, unless otherwise specified. For full terms and conditions including pricing and conditions, refer to the Booking Conditions at the back of this brochure.

## MATAFONUVA LODGE



Standard Fale

Foa Island, Ha'apai (HPA)  
MAP PAGE 49 REF. 3

From **\$160\***

- ❖ Traditional Pacific Island fales perched on a sandy beach
  - ❖ Steps from the archaeological site of the Petroglyphs
  - ❖ Complimentary bicycle hire to explore the wildlife and main town
- Includes light breakfast daily.**

**Location:** At the very northern tip of Foa Island. Distances: Beachfront, Town centre 12km, Lifuka Island Airport 15km.

**Getting There:** Transfers from Lifuka Island Airport must be booked in conjunction with your accommodation. Ask your travel agent for details.

**Property Features:** Free Wi-Fi (common areas), Restaurant, Bar, Room service, Bicycle hire, Use of snorkelling equipment, paddle boards and kayaks, 24 hour reception, Parking (free), 10 rooms.

**Room Features:** Ocean views, Terrace, Tea/coffee making facilities.

**Max Capacity:** Standard Fale – 3, Family Fale – 4 adults/1 child.

## SANDY BEACH RESORT



Fale

Foa Island, Ha'apai (HPA)  
MAP PAGE 49 REF. 3

From **\$383\***

- ❖ Use of facilities at sister resort Matafonua Lodge
  - ❖ Fine dining Tongan seafood restaurant available
  - ❖ Traditional fales in a beachfront tropical garden setting
- Includes light breakfast daily.**

**Location:** In the outer island group of Ha'apai on a white sand beach. Distances: Beachfront, Town centre 9km, Lifuka Island Airport 12km.

**Getting There:** Coach transfers from Lifuka Island Airport must be booked in conjunction with your accommodation. **\$44\*** per person one way.

**Property Features:** Restaurant, Bar, 24 hour room service, Barbecue area, Use of non-motorised watersports and bicycles, Library, 12 rooms.

**Room Features:** Free Wi-Fi, Ocean views, Balcony or patio, Fan, Tea/coffee making facilities, Safe.

**Max Capacity:** Fale – 2, Family Fale – 4.

## MYSTIC SANDS BEACH BUNGALOWS



Garden Room with Ocean View

Utungake Village, Vava'u (VAV)  
MAP PAGE 49 REF. 4

From **\$295\*^**

- ❖ Families will love the private beach and free use of the kayaks
- ❖ Spacious rooms with cooking facilities and private decks
- ❖ Located on the main island close to restaurants and cafés

**Location:** On the shores of Vava'u – an outer island in Tonga. Distances: Beachfront, Town centre 8.6km, Vava'u Airport 16km.

**Getting There:** Transfers from Lupepau'u International Airport must be booked in conjunction with your accommodation. Ask your travel agent for details.

**Property Features:** Pool, Use of kayaks and snorkelling equipment, Barbecue area, Shuttle bus transfers (extra charge), Parking (free), 6 rooms.

**Room Features:** Ocean views, Balcony, Sun lounge, Limited cooking facilities, Tea/coffee making facilities, Fan, Hair dryer, Non-smoking, Safe.

**Max Capacity:** Garden Room with Ocean View – 2, Beachfront Unit – 3, Ocean View Room – 4, Waterfront House – 6.

**^ Minimum 3 night stay applies.**



## THE TONGAN BEACH RESORT



Beach Front

Utungake Island, Vava'u (VAV)  
MAP PAGE 49 REF. 4

From **\$345\*^**

- ❖ All rooms with covered decks are steps away from the water
  - ❖ Overwater covered dining bungalow and jetty
  - ❖ Unique location on the seasonal migration path of Humpback whales
- Includes full breakfast daily.**

**Location:** Sitting on the island of Vava'u and steps from the ocean. Distances: Beachfront, Town centre 8.8km, Vava'u Airport 18km.

**Getting There:** Transfers from Lupepau'u International Airport must be booked in conjunction with your accommodation. Ask your travel agent for details.

**Property Features:** Wi-Fi (common areas – extra charge), Pool, Restaurant, Overwater dining fale, Bar, Massage facilities, Deep water jetty, Use of snorkelling equipment and kayaks, Daily fish feeding, Glass bottom boat tour (extra charge), 12 rooms.

**Room Features:** Air-conditioning, Fan, Deck, Tea/coffee making facilities, Beach towels, Ironing facilities, Hair dryer.

**Max Capacity:** Beach Front – 2, Beach Front Family – 4, Beach Front Apartment – 6.

**^ Minimum 2 night stay applies.**



Hala Tahi Houme Sea Track, Alofi

## NIUE

The best kept secret of the South Pacific is Niue. Leave the hustle and bustle behind and discover this charming island with its warm and welcoming locals. Niue lays claim to being one of the safest islands in the world. The island is a raised atoll so there are plenty of underwater caverns, swimming coves and colourful reefs to discover and explore.

### SEE

- Take in the colourful reef flats, turquoise rock pools and caverns at Avaiki Cave
- Watch the waves crash into the three large rock formations known as the Talava Arches

### DO

- Spend a day hiking the rugged landscape to Togo Chasm, passing through one of oldest exposed coral fields
- For a truly unique experience, watch whales and dolphins frolic metres from the shore

### EAT & DRINK

- Sample Niue's most traditional fare – deliciously fresh Coconut Crab otherwise known as Uga
- Try The Washaway Café, a unique place that offers an honesty bar where you serve your own drinks

### WHAT'S ON

#### Peniamina Day

26 October

#### KaiNiue Food Festival

November (dates to be confirmed)



REF.	APARTMENTS	PAGE
1	Lau's Getaway ◆◆◆◆	56
2	Scenic Matavai Apartments ◆◆◆◇	57
2	Scenic Matavai Villa ◆◆◆◇	57
3	Stone Villas ◆◆◆	56
3	Talua Heights ◆◆◆	56
REF.	HOTELS	PAGE
4	Scenic Matavai Resort ◆◆◆◆	57



**ALOFI RENTAL CARS**

Alofi Rentals is a well-established rental company on Niue, with over 10 years' experience, that is proud to provide you with the best vehicle rental service on the island. You will also need a local driver's licence from the local police department.

1 Apr 20 – 31 Mar 21	Per Day	Per Week
Budget Car	\$50* <sup>^</sup>	\$300* <sup>^</sup>
Economy Car	\$55* <sup>^</sup>	\$330* <sup>^</sup>
7 Seat MPV	\$65* <sup>^</sup>	\$488* <sup>^</sup>

<sup>^</sup>Price valid per vehicle per day, based on a 24 hour period. Per week is based on seven days and includes one free day. A credit card imprint is required when taking delivery of your vehicle to cover any additional cost. All hires are subject to Alofi Rentals 20/21 rental terms and conditions. Minimum age is 21 years. Other vehicle types also available.



**WHALE TRIP**

A must-do in whale season. The trip starts with an informative presentation on humpback whales by qualified staff, before heading out to sea to spot whales as they rest and play. If the behaviours allow, you may be given a once in a lifetime experience with an in-water interaction.

- Includes:**
- Use of snorkelling equipment
  - Expert guide
  - 3 hour whale watching tour
  - Light refreshments
  - Transfer to launch site
  - Return transfers from Niue accommodation

**Duration:** 4 hours  
**Departs:** Mon to Sat from Dive HQ  
**Not suitable for children under 8 yrs.**

1 Apr 20 – 31 Mar 21	Adult/Child
	\$192*



**NIUE ORIENTATION TOUR**

Join the Niue Orientation Tour, the morning after arrival, for a four and a half hour guided tour of Niue's West Coast. Visit iconic swimming locations, cliff tops, a cave and a chasm. Find out where and when to go for optimum snorkelling conditions at each location. Discover how to maximise your holiday time on Niue.

- Includes:**
- Expert guide
  - Half Day Orientation tour
  - Snacks and chilled water
  - Niue Information brochure
  - Planning guides for snorkelling, sightseeing and dining
  - Air-conditioned minibus
  - Annotated map

**Duration:** 4 hours 30 minutes  
**Departs:** Tue, Sat from Niue's Tourism Information Centre at 8am, Scenic Mataval Resort Niue at 8:10am

1 Apr 20 – 31 Mar 21	Adult	Child 4-12 yrs
	\$80*	\$40*



**SNORKEL TRIP**

A coastal tour where you will learn about Niue and its history. Along the way, meet the resident spinner dolphins and can get in for a unique in-water interaction. Followed by a snorkel to the best outer reef site in Niue – great for the whole family. Reef sharks, barracuda, napoleon wrasse and katuai – sea krait are often spotted.

- Includes:**
- Use of snorkelling equipment
  - Light refreshments
  - Return transfers from Niue accommodation

**Duration:** 2 hours 30 minutes  
**Departs:** Mon to Sat from Dive HQ  
**Not suitable for children under 8 yrs.**

1 Apr 20 – 31 Mar 21	Adult/Child
	\$102*



**WEST COAST TOUR**

Start your holiday in Niue with Explore Niue Island Tour. This tour is a great way to discover the many points of interest on the island before you head out on your own. Not only does it provide you with an insight into our history, culture, traditions and our way of life that we look forward to sharing with you, but we will also give you a great overview of how you might be able to spend your time in Niue. From great snorkelling spots to the best places to dine and other tours that will come highly recommended.

- Includes:**
- Expert guide
  - Light refreshments
  - Air-conditioned transport
  - Return transfers from Niue accommodation

**Duration:** 3 hours 30 minutes  
**Departs:** Wed, Sat from Niue at 8:30am

1 Apr 20 – 31 Mar 21	Adult	Child 3-12 yrs
	\$79*	\$40*



**PLANTATION & UGA TOUR**

Take a 4WD to a Niuean plantation where your guide will explain traditional farming methods, old and new. You'll see how Niueans grow their staple crops of taro, cassava, kumura, watermelon, paw paw and banana and get to try local seasonal fruit. Then explore Niue's ancient rainforest, you'll be dodging butterflies as you marvel at the coral rock formations and unique vegetation. You'll also get the opportunity to hold and learn about the uga.

- Includes:**
- Expert guide
  - Light refreshments
  - Return transfers from Niue accommodation

**Duration:** 2 hours  
**Departs:** From Mutulau Village  
 Thu, Sat at 9am,  
 Tue, Fri at 8am

1 Apr 20 – 31 Mar 21	Adult	Child 6-16 yrs
	\$79*	\$34*

\*Prices are a guide only, subject to change and availability and are in New Zealand Dollars. From prices for accommodation are per room per night for 2 people, unless otherwise specified and based on the lowest room category for travel in low season. Prices for tours and transfers are per person, unless otherwise specified. For full terms and conditions including pricing and conditions, refer to the Booking Conditions at the back of this brochure.

# ALOFI & AVATELE HOTELS

## TALOA HEIGHTS



Treetop Studio

1 Halamahaga Road, Alofi (IUE)  
MAP PAGE 54 REF. 3

From **\$250\***

- ❖ Modern self-contained units with private decks
- ❖ Perched on the cliffs overlooking Alofi Bay with stunning views
- ❖ Easy access to coral reef swimming holes

**Location:** Within walking distance of restaurants and the wharf. Distances: Town centre 1km, Niue Airport 3.5km.

**Getting There:** Free return coach transfers from Niue Airport.

**Property Features:** Free Wi-Fi (common areas), Pool (lagoon), Barbecue area, Use of snorkelling equipment, kayaks and bicycles, Guest laundry, 7 rooms.

**Room Features:** Free Wi-Fi (Treetop Studio), Air-conditioning, Patio, Fan, Insect screens, Limited cooking facilities with microwave (Treetop Studio, Bungalow), Kitchen with microwave (Villa), Tea/coffee making facilities, DVD player (on request), Ironing facilities, Hair dryer.

**Max Capacity:** Treetop Studio – 2, Bungalow – 2 adults/1 child, Villa – 8.



## STONE VILLAS



Standard Double Villa

Alofi-Liku Road, via Alofi (IUE)  
MAP PAGE 54 REF. 3

From **\$195\*^**

- ❖ Eco-conscious sanctuary built from pure Niuean limestone
- ❖ Self-contained villas with open dining area and a private patio
- ❖ Each villa comes with a private car for use during your stay

**Includes breakfast starter pack and use of private car.**

**Location:** Nestled in the lush green forest of Niue, only minutes from the beach and township. Distances: Town centre 600m, Niue Airport 3.5km.

**Getting There:** Free private transfers from Niue Airport.

**Property Features:** Barbecue area, Parking (free), 2 rooms.

**Room Features:** Balcony, Kitchen with microwave, Tea/coffee making facilities, Cable TV, Washer/dryer, Ironing facilities, Hair dryer, Safe.

**Max Capacity:** Standard Double Villa – 2 adults/1 child.

**^Minimum 3 night stay applies.**

## LAU'S GETAWAY



Deluxe View Villa

209 Main Street, Avatele (IUE)  
MAP PAGE 54 REF. 1

From **\$260\***

- ❖ Split-level self-contained villas with spectacular views
- ❖ Each villa features a private open-air bathtub on the top floor balcony
- ❖ A 10 minute drive from the main town of Alofi

**Includes welcome breakfast hamper and bottle of wine on arrival.**

**Location:** Sitting among tropical gardens with views of the Pacific Ocean. Distances: Oceanfront, Town centre 9km, Niue Airport 7.1km.

**Getting There:** Free return coach transfers from Niue Airport.

**Property Features:** Guest laundry, Parking (free), 2 rooms.

**Room Features:** Private outdoor bath, Private day bed, Air-conditioning, Balcony, Fan, Kitchen, Coffee pod machine, Safe.

**Max Capacity:** Deluxe View Villa/Superior View Villa – 2.





SCENIC MATAVAI APARTMENTS



Studio

Tapeu-Porritt Road, Tamakautoga (IUE)  
MAP PAGE 54 REF. 2

From **\$185\***

- ❖ Large freshwater pool with barbecue facilities
- ❖ Self-contained apartments with private balconies
- ❖ Use of the Scenic Matavai Resort facilities via a free shuttle

**Includes welcome drink on arrival.**

**Location:** Set among gardens and palm trees offering ocean views. Distances: Oceanfront, Town centre 5km, Niue Airport 5km.

**Getting There:** Free return coach transfers from Niue Airport.

**Property Features:** Wi-Fi (common areas – extra charge), Pool, Restaurant, Barbecue area, Guest laundry, Free shuttle to Scenic Matavai Resort, 10 rooms.

**Room Features:** Ocean views, Air-conditioning, Fan, Balcony, Limited cooking facilities with microwave, Tea/coffee making facilities, Smart TV, Cable TV, Ironing facilities, Laundry, Hair dryer, All rooms non smoking.

**Max Capacity:** Studio – 3, 2 Bedroom – 6.

SCENIC MATAVAI VILLA



3 Bedroom Villa

Tapeu-Porritt Road, Tamakautoga (IUE)  
MAP PAGE 54 REF. 2

From **\$2945\*^**

- ❖ Perfect for families or groups with a large deck for entertaining
- ❖ Villa guests have use of Scenic Matavia Resort's facilities
- ❖ Self-contained private villa within metres of the Pacific Ocean

**Includes welcome drink on arrival.**

**Location:** Surrounded by trees and gardens and a short walk from the water's edge. Distances: Oceanfront, Town centre 5km, Niue Airport 5km.

**Getting There:** Free return coach transfers from Niue Airport.

**Property Features:** Wi-Fi (common areas – extra charge), Barbecue area, Use of Scenic Matavai Apartments facilities, Free shuttle to Scenic Matavai Resort, 1 room.

**Room Features:** Air-conditioning, Balcony, Kitchen with microwave and dishwasher, Cable TV, Washer/dryer, Ironing facilities, Hair dryer.

**Max Capacity:** 3 Bedroom Villa – 6 adults/2 children.

**^Minimum 7 night stay applies.**

SCENIC MATAVAI RESORT



Ocean

Tapeu-Porritt Road, Tamakautoga (IUE)  
MAP PAGE 54 REF. 4

From **\$235\***

- ❖ Large pool with loungers and swim-up bar
- ❖ Modern rooms with private balconies
- ❖ Dolphin Restaurant & Bar offers panoramic views

**Includes tropical breakfast daily and welcome drink on arrival.**

**Location:** On a cliff top with panoramic views of the Pacific Ocean. Distances: Oceanfront, Town centre 7.5km, Niue Airport 5km.

**Getting There:** Free return coach transfers from Niue Airport.

**Property Features:** Pools (2), Restaurant, Bars (2), Room service, Guest laundry, Laundry service, 24 hour reception, Parking (free), 56 rooms.

**Room Features:** Air-conditioning, Fan, Balcony, Tea/coffee making facilities, Smart TV (Deluxe Cliff Top), Cable TV, Ironing facilities, Laundry, Hair dryer, All rooms non smoking.

**Max Capacity:** Ocean/Superior/Superior Cliff Top/Deluxe Cliff Top – 2, Studio – 3 adults/1 child.



\*Prices are a guide only, subject to change and availability and are in New Zealand Dollars. From prices for accommodation are per room per night for 2 people, unless otherwise specified and based on the lowest room category for travel in low season. Prices for tours and transfers are per person, unless otherwise specified. For full terms and conditions including pricing and conditions, refer to the Booking Conditions at the back of this brochure.



Isle of Pines

## NEW CALEDONIA

Discover New Caledonia, where the French Riviera meets the South Pacific. With its white sand beaches, turquoise waters and mountain rainforests combined with a rich blend of French and Melanesian cultures, New Caledonia offers the perfect island holiday.

### SEE

- View an exciting cultural performance at the popular weekly evening carnival at Place des Cocotiers, Noumea
- Marvel at the striking installations and buildings at the Tjibaou Cultural Centre

### DO

- Climb the 247 steps to the top of the 130-year-old Lighthouse, located on Amedee Island
- Snorkel around the largest lagoon in the world, Lagoon of New Caledonia, registered as a UNESCO World Heritage site

### EAT & DRINK

- Tuck into a divine fusion of French and tropical island foods at either Marmite et Tire Bouchon or La Table des Gourmets
- Cool down with a tropical cocktail in one of the many sophisticated bars located along Anse Vata beach

### WHAT'S ON

#### Bastille Day Festival

14 July

#### New Caledonia Day

24 September

#### Festival of Light

15 to 30 December



REF.	APARTMENTS	PAGE	REF.	HOTELS	PAGE
1	Casa Del Sole Apartments ◆◆◆	60	7	Hotel Le Lagon ◆◆◆◇	60
2	Château Royal Beach Resort and Spa ◆◆◆◆	61	8	Hotel Nengone Village ◆◆◆◆	65
3	Hilton Noumea La Promenade Residences ◆◆◆◆	62	9	Hotel Paradis d'Ouvéa ◆◆◆◆	65
4	Ramada Hotel & Suites Noumea ◆◆◆◆	62	10	Le Méridien Ile des Pins ◆◆◆◆◆	64
			11	Le Méridien Noumea Resort & Spa ◆◆◆◆◆	63
			12	Nouvata ◆◆◆	60
			10	Ouré Lodge Beach Resort ◆◆◆◆◆	64
			13	Sheraton New Caledonia Deva Spa & Golf Resort ◆◆◆◆◆	63
5	Drehu Village Hotel ◆◆◆	65			
6	Escapade Island Resort ◆◆◆◆	61			

## NEW CALEDONIA TOURS



### AIRPORT TRANSFERS

Get your holiday off to a great start with a door to door private car transfer or shared coach transfer service.

Convenient transfers are available from Noumea's La Tontouta International Airport to Noumea accommodation, 24 hours a day, 7 days a week. Sit back, relax and be transferred in air-conditioned comfort.

Travel distance from La Tontouta International Airport to Noumea is approximately 6.6 kilometres. Travel time depends on time of day and traffic.

#### Share Coach Per Person

1 Apr 20 – 31 Mar 21	Adult	Child 0-11 yrs
Noumea	\$50* <sup>^</sup>	\$29* <sup>^</sup>
Deva	\$123* <sup>^</sup>	\$68* <sup>^</sup>

#### Private Vehicle Per Vehicle

1 Apr 20 – 31 Mar 21	1 to 3 People
Noumea	\$227* <sup>^</sup>
Deva	\$690* <sup>^</sup>

<sup>^</sup>Price based on one way to/from La Tontouta Airport.



### ZIP LINING TOUR

Discover the native flora and fauna from the treetops of the Païta forest of New Caledonia. Located 45 minutes from Noumea, the 1.2 kilometres of zip lines are divided into four stages plus a hiking track through the forest. This is a great way to discover the countryside from a birds eye view.

#### Includes:

- Full equipment and instruction from certified operators
- Choice of morning or afternoon session

**Duration:** 2 hours 30 minutes

**Departs:** Wed to Sun from Noumea at 9am, 1:30pm

**Prices with transfers and infant prices also available. Maximum weight restrictions apply – 120kg.**

1 Apr 20 – 31 Mar 21	Adult	Child 8-14 yrs
	\$114*	\$102*



### CITY ORIENTATION TOUR

Enjoy this educational and fun tour of New Caledonia's capital city, Noumea.

Take in the many sights as you make your way around Noumea's beautiful bays into the city centre and learn about the history and culture from your guide. Recommended for the first day of your holiday. The tour includes a stop off at a local bakery or supermarket.

#### Includes:

- Noumea city sights
- Expert guide
- Air-conditioned vehicle
- Return transfers from Noumea accommodation

**Duration:** 1 hour 30 minutes

**Departs:** Daily from Noumea at 9:30am

1 Apr 20 – 31 Mar 21	Adult	Child 3-11 yrs
	\$63*	\$48*



### HERITAGE TOUR

Relive the colonial era of New Caledonia and enjoy a guided visit of Noumea's traditional houses including the Maison Célières and Chateau Hagen, both surrounded by tropical gardens. The tour starts at a local coffee house in Noumea city and includes lunch in one of Noumea's colonial restaurants and a stop at a panoramic lookout.

#### Includes:

- Light breakfast and lunch (excluding beverages)
- Colonial houses and Chateau Hagen guided tour
- Air-conditioned vehicle
- Return transfers from Noumea accommodation

**Duration:** 6 hours

**Departs:** Daily from Noumea at 8:30am

1 Apr 20 – 31 Mar 21	Adult	Child 5-11 yrs
	\$331*	\$237*



### WINE & CHEESE TASTING

Enjoy the French atmosphere of Noumea's latest wine bar, styled on similar bars in Bordeaux. Located within walking distance from most hotels on Anse Vata. The bar features a unique themed décor based on the racecourse situated opposite. It offers a comprehensive list of French wines and Champagne and delicious cheese and cold meat platters.

#### Includes:

- Platter of three cheeses and charcuterie
- Platter of beef and tuna tartare
- Wine tasting (grape juice for children under 18 years)

**Open:** Tue to Sat from 6pm

1 Apr 20 – 31 Mar 21	Adult	Child 0-17 yrs
	\$110*	\$85*



### ESCAPADE ISLAND DAY TRIP

Spend the day on a tropical island located only 20 minutes from Noumea and surrounded by a 200 hectare marine reserve teeming with fish life and turtles.

Walk around the island in 30 minutes, snorkel in the lagoon, hire canoes or paddles from the water activities centre or just relax on the beach or by the pool.

#### Includes:

- Buffet lunch (excluding beverages)
- Access to swimming pool and sun loungers
- Return transfers from Noumea accommodation
- Return boat transfers from Port Moselle in Noumea

**Duration:** 6 hours

**Departs:** Daily from Noumea at 8:30am

1 Apr 20 – 31 Mar 21	Adult	Child 5-10 yrs
	\$193*	\$114*

\*Prices are a guide only, subject to change and availability and are in New Zealand Dollars. From prices for accommodation are per room per night for 2 people, unless otherwise specified and based on the lowest room category for travel in low season. Prices for tours and transfers are per person, unless otherwise specified. For full terms and conditions including pricing and conditions, refer to the Booking Conditions at the back of this brochure.

# NOUMEA HOTELS

## NOUVATA



Standard

123 Promenade Roger Laroque, Noumea (NOU)  
MAP PAGE 58 REF. 12

From **\$208\***

- ❖ Large pool and sundeck surrounded by native tropical gardens
  - ❖ Weekly poolside seafood buffet and Tahitian performance
  - ❖ Great location and amenities for solo travellers, couples and families
- Includes free Wi-Fi up to 250 megabytes per room per day.**

**Location:** Opposite the beach and walking distance to restaurants, boutiques and attractions. Distances: Beachfront, Town centre 4.5km, Noumea Airport 45km.

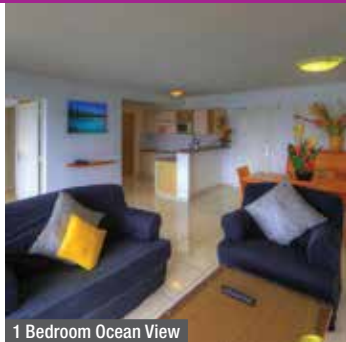
**Property Features:** Wi-Fi (common areas – extra charge), Pools (2 – including children's), Restaurant, Bar, Hairdresser, Laundry/dry cleaning service, Lift, Parking (free), 24 hour reception, Luggage room, 345 rooms.

**Room Features:** Wi-Fi (extra charge), Air-conditioning, Balcony (Comfort, Premium, Family Suite), Limited cooking facilities with microwave (Standard), Hair dryer, Tea/coffee making facilities, Cable TV, Ironing facilities, Safe, All rooms non smoking.

**Max Capacity:** Standard/Comfort/Premium – 3, Family Suite – 3 adults/2 children.



## CASA DEL SOLE APARTMENTS



1 Bedroom Ocean View

10 Route De L'Aquarium, Noumea (NOU)  
MAP PAGE 58 REF. 1

From **\$244\***

- ❖ A short walk to the beautiful Anse Vata Beach
- ❖ Large self-contained apartments with ocean views
- ❖ Café serves authentic Parisian treats

**Location:** At the tip of a narrow peninsula in Noumea, steps away from Baie des Citrons and bayside dining. Distances: Beach 290m, Town centre 4.5km, Noumea Airport 77.8km.

**Property Features:** Wi-Fi (common areas – extra charge), Pool, Laundry/dry cleaning service, Lift, Non smoking, 127 rooms.

**Room Features:** Wi-Fi (extra charge), Ocean views, Air-conditioning, Balcony, Kitchen with microwave and dishwasher, Washer, Ironing facilities, Safe.

**Max Capacity:** 1 Bedroom Ocean View – 3, 2 Bedroom Ocean View – 5.



## HOTEL LE LAGON



Studio

149 Route Anse Vata, Noumea (NOU)  
MAP PAGE 58 REF. 7

From **\$327\***

- ❖ Spacious modern rooms with cooking facilities and private balconies
- ❖ Complimentary round trip to Duck Island for guests
- ❖ Specialty breakfast-only restaurant with gourmet meals

**Location:** In the Anse Vata tourist area, a short walk to the beach. Distances: Beach 100m, Town centre 4km, Noumea Airport 50km.

**Property Features:** Wi-Fi (common areas – extra charge), Pool (heated), Spa (heated), Day spa, 24 hour reception, Guest laundry, Tennis court, Sauna, Gym, Fitness classes, 62 rooms.

**Room Features:** Wi-Fi (extra charge), Air-conditioning, Terrace, Limited cooking facilities with microwave, Mini bar, Tea/coffee making facilities, Cable TV, Smart TV, Hair dryer, Safe.

**Max Capacity:** Studio – 2, 1 Bedroom Suite – 4.



CHÂTEAU ROYAL BEACH RESORT AND SPA



Standard 1 Bedroom Suite

140 Promenade Roger Laroque, Noumea (NOU)  
MAP PAGE 58 REF. 2

From **\$391\***

- ❖ Self-contained rooms with cooking facilities and spacious living areas
- ❖ Swim-up pool bar and sundeck overlooking the ocean
- ❖ Unique heated hydromassage relaxation pool, Hamman and sauna

**Location:** A beachfront location on Anse Vata. Distances: Beachfront, Town centre 5km, Noumea Airport 40km.

**Property Features:** Pools (2), Restaurants (2), Bars (2), Room service, Aqua Royal Spa (day spa), Hammam (Turkish bath), Fitness centre, Fitness classes, Sauna, Tennis court, Resort shop, Guest laundry, 24 hour reception, 108 rooms.

**Room Features:** Air-conditioning, Kitchen with microwave and dishwasher, Ironing facilities, Hair dryer.

**Max Capacity:** Standard 1 Bedroom Suite/Lagoon 1 Bedroom Suite/Prestige 1 Bedroom – 2 adults/1 infant, Resort 1 Bedroom Suite – 3 adults or 2 adults/2 children, Prestige 2 Bedroom Suite/Lagoon 2 Bedroom Suite – 5.



ESCAPEDE ISLAND RESORT



Garden Bungalow

L'îlot Maitre, Noumea (NPI)  
MAP PAGE 58 REF. 6

From **\$454\***

- ❖ Intimate island resort accessible only by boat
- ❖ New Caledonia's only overwater bungalows
- ❖ Swimming pool with sundeck and swim-up bar

**Includes full breakfast daily and free Wi-Fi up to 250 megabytes per room per day.**

**Location:** Surrounded by a natural 200 hectare marine reserve located on an islet. Distances: Beachfront, Town centre 5km, Airport 45km.

**Getting There:** Coach transfer (extra charge) from Tontouta Airport to Noumea then a complimentary 20 minute boat transfer from Noumea's Port Moselle.

**Property Features:** Wi-Fi (extra charge), Pool, Restaurant, Bars (2 – including swim-up), Massage centre, 24 hour reception, Free boat shuttle to Noumea, 69 rooms.

**Room Features:** Wi-Fi (extra charge), Air-conditioning, Deck (Overwater Bungalow), Tea/coffee making facilities, Cable TV, Ironing facilities, Hair dryer, Safe.

**Max Capacity:** Garden Bungalow/Beach Bungalow – 3 adults/1 child, Overwater Bungalow – 2.



\*Prices are a guide only, subject to change and availability and are in New Zealand Dollars. From prices for accommodation are per room per night for 2 people, unless otherwise specified and based on the lowest room category for travel in low season. Prices for tours and transfers are per person, unless otherwise specified. For full terms and conditions including pricing and conditions, refer to the Booking Conditions at the back of this brochure.

# NOUMEA HOTELS

## HILTON NOUMEA LA PROMENADE RESIDENCES



Studio

109 Promenade Roger Laroque, Noumea (NOU)  
MAP PAGE 58 REF. 3

From **\$391\***

- ❖ Families and couples will love the spacious modern rooms and views
  - ❖ Walking distance to restaurants and attractions
  - ❖ Spacious apartments with kitchens and balconies
- Includes free Wi-Fi up to 250 megabytes per room per day.**

**Location:** On popular Anse Vata Bay, directly opposite the beach. Distances: Beach across road, Town centre 4.5km, Noumea Airport 45km.

**Property Features:** Pool, Restaurant, Room service, Fitness centre, Laundry/dry cleaning service, Lift, 24 hour reception, Parking (free), 120 rooms.

**Room Features:** Wi-Fi (extra charge), Air-conditioning, Balcony, Tea/coffee making facilities, Kitchen with microwave and dishwasher, DVD player, Cable TV, Laundry, Ironing facilities, Safe.

**Max Capacity:** Studio – 2, 1 Bedroom – 3, 2 Bedroom – 4, 3 Bedroom – 6.



## RAMADA HOTEL & SUITES NOUMEA



Studio

7 Rue Louis Bleriot, Noumea (NOU)  
MAP PAGE 58 REF. 4

From **\$345\*\***

- ❖ Lagoon-style outdoor pool with sun loungers
  - ❖ Spacious suites with covered balconies
  - ❖ Sports bar with large screens and a revolving restaurant with stunning views
- Includes a drink voucher per person on arrival.**

**Location:** In the heart of Anse Vata and close to the beachfront, shops, restaurants and attractions of Noumea. Distances: Beach 300m, Town centre 5km, Noumea Airport 50km.

**Property Features:** Pool, Revolving restaurant, Sports bar, Fitness centre, 24 hour reception, 125 rooms.

**Room Features:** Air-conditioning, Balcony, Cable TV, Kitchen, Laundry (1 and 2 Bedroom), Hair dryer, Safe.

**Max Capacity:** Studio/Superior Junior Suite – 2, 1 Bedroom – 4, 2 Bedroom – 4 adults/ 2 children.

**\*\*Price includes XPF90 Eco Fee per room per night and XPF250 Resort Fee per room per night to be paid directly to the hotel by you.**



\* Prices are a guide only, subject to change and availability and are in New Zealand Dollars. From prices for accommodation are per room per night for 2 people, unless otherwise specified and based on the lowest room category for travel in low season. Prices for tours and transfers are per person, unless otherwise specified. For full terms and conditions including pricing and conditions, refer to the Booking Conditions at the back of this brochure.

## LE MÉRIDIEN NOUMEA RESORT & SPA



Classic Garden View



Pointe Magnin, Noumea (NOU)  
MAP PAGE 58 REF. 11

From **\$477\***

- ❖ Four restaurants including award-winning l'Hippocampe
- ❖ Bathrooms include rainfall shower and deep soaking bath
- ❖ Full-service day spa features treatment cabins with lagoon views

**Location:** In the heart of the tropical gardens with lagoon front location. Distances: Beachfront, Town centre 6km, Noumea Airport 45km.

**Property Features:** Casino, Pool, Restaurants (4), Bars (2), 24 hour room service, Deep Nature Spa (day spa), Tennis court, Bicycle hire, Fitness centre, Billiards table, 24 hour reception, Non smoking, 207 rooms.

**Room Features:** Air-conditioning, Fan, Balcony, Tea/coffee making facilities, Mini bar, Ironing facilities.

**Max Capacity:** Classic Garden View/Superior Ocean View – 3, Resort Suite/Diplomatic Suite/Presidential Suite – 2, Voyageur Suite 1 Bedroom – 4, Voyageur Suite 2 Bedroom – 6 adults or 4 adults/3 children.



## SHERATON NEW CALEDONIA DEVA SPA & GOLF RESORT



Traditional

Deva Domain, Bourail (NCB)  
MAP PAGE 58 REF. 13

From **\$507\***

- ❖ Many family activities including hiking, bike riding and horse back riding
- ❖ Nature-inspired day spa and picturesque 18 hole golf course
- ❖ Direct access to the white sandy beach and World Heritage Listed Reef

**Includes full buffet breakfast daily.**

**Location:** A unique location with hills and valleys and facing the lagoon. Distances: Beachfront, Town centre 19km, Noumea Airport 136km.

**Property Features:** Pool, Restaurants (2), Bar, 24 hour room service, Kids club 1-10 years (extra charge), Day spa, Fitness centre, Golf course (18 holes), 24 hour reception, 176 rooms.

**Room Features:** Air-conditioning, Patio, Fan, Tea/coffee making facilities, Cable TV, Bathrobes, Hair dryer, Ironing facilities.

**Max Capacity:** Traditional/Traditional Domain Bungalow/Superior Beachfront Bungalow – 2, Deluxe/Traditional 1 Bedroom Suite – 3, Traditional 2 Bedroom Suite – 5.



\*Prices are a guide only, subject to change and availability and are in New Zealand Dollars. From prices for accommodation are per room per night for 2 people, unless otherwise specified and based on the lowest room category for travel in low season. Prices for tours and transfers are per person, unless otherwise specified. For full terms and conditions including pricing and conditions, refer to the Booking Conditions at the back of this brochure.

# ISLE OF PINES HOTELS

## OURÉ LODGE BEACH RESORT



Garden

Kanumera Bay, Isle of Pines (ILP)  
MAP PAGE 58 REF. 10

From **\$510\***

- ❖ Quiet discreet location, perfect for couples
- ❖ Spacious bungalows steps from the bay
- ❖ Famous Isle of Pines lobster served at Kanumera Restaurant & Bar

**Includes full breakfast daily.**

**Location:** On the Isle of Pines with direct access to the Bay of Kanumera. Distances: Beachfront, Isle of Pines Airport 10.4km.

**Getting There:** 30 minute flight from Noumea Airport with regular departures daily to the resort. Ask your travel agent for details.

**Property Features:** Free Wi-Fi (common areas), Pool, Restaurant, Bar, Resort shop, Room service, Sundeck, Use of snorkelling equipment and kayaks, Laundry service, Airport transfers (extra charge), 30 rooms.

**Room Features:** Air-conditioning, Mini bar, Tea/coffee making facilities, Terrace with sun lounge, Cable TV, Ironing facilities, Hair dryer, Safe.

**Max Capacity:** Garden/Tropical Bungalow/Beachfront Bungalow/Exotic Bungalow – 3, Family Bungalow – 4 adults/2 children.



## LE MÉRIDIEN ILE DES PINS



Superior Garden View

Baie d'Oro, Isle of Pines (ILP)  
MAP PAGE 58 REF. 10

From **\$698\***

- ❖ A short walk to the crystal clear waters of the Oro natural pool
- ❖ Bright airy rooms have views of either the gardens, lagoon or beach
- ❖ Private furnished terraces and deep-soaking tubs in each room

**Includes full buffet breakfast daily.**

**Location:** Set on the beach on Oro Bay. Distances: Beachfront, Isle of Pines Airport 9km.

**Getting There:** Scenic flight from Noumea Airport then shuttle bus from Isles of Pines Airport to the resort. Ask your travel agent for details.

**Property Features:** Wi-Fi (common areas – extra charge), Pool, Restaurant, Bar, 24 hour room service, Day spa, Bicycle hire, Laundry service, 24 hour reception, 48 rooms.

**Room Features:** Wi-Fi (extra charge), Air-conditioning, Fan, Balcony, Tea/coffee making facilities, Mini bar, Docking station, Bath.

**Max Capacity:** Superior Garden View/Deluxe Pool View/Coconut Grove Bungalow Suite/Water Front Bungalow Suite/Beach View Bungalow Suite – 3, Panoramic Bungalow Suite – 2.



\* Prices are a guide only, subject to change and availability and are in New Zealand Dollars. From prices for accommodation are per room per night for 2 people, unless otherwise specified and based on the lowest room category for travel in low season. Prices for tours and transfers are per person, unless otherwise specified. For full terms and conditions including pricing and conditions, refer to the Booking Conditions at the back of this brochure.



DREHU VILLAGE HOTEL



Garden Bungalow

Chateaubriand Bay, Lifou, Loyalty Islands (LIF)  
MAP PAGE 58 REF. 5

From **\$274\***

- ❖ All spacious rooms are absolute beachfront
- ❖ Poolside restaurant and deck overlooking the ocean
- ❖ Bicycles, kayaks and snorkelling gear available

**Includes full buffet breakfast daily.**

**Location:** In the heart of W6, the capital of Lifou, at the edge of Chateaubriand Bay. Distances: Beachfront, Shop 300m, Lifou Airport 19km.

**Getting There:** Coach transfers from Lifou Airport must be booked in conjunction with your accommodation. **\$67\*** per adult return. Child prices on application.

**Property Features:** Pool, Restaurant, Bar, Boutique, Use of snorkelling equipment, canoes and kayaks, Bicycle hire, Table tennis, Guest lounge, 30 rooms.

**Room Features:** Air-conditioning, Terrace, Tea/coffee making facilities, Hair dryer.

**Max Capacity:** Garden Bungalow/Sea View Bungalow/Suite – 3.

HOTEL NENGONE VILLAGE



Traditional Hut

39 Rue Jean Jaures Maré, Loyalty Islands (MEE)  
MAP PAGE 58 REF. 8

From **\$265\***

- ❖ Spacious apartments, great for families or groups
- ❖ Located on a secluded bay lined by a tropical forest
- ❖ Large beachside pool with sundeck

**Includes full buffet breakfast daily.**

**Location:** On the island of Maré in the Loyalty Islands. Distances: Beachfront, Maré Airport 28km.

**Getting There:** Coach transfers from Maré Airport must be booked in conjunction with your accommodation. **\$68\*** per adult return. Child prices on application.

**Property Features:** Pool (lagoon), Restaurant, Bar, Sundeck, Use of kayaks and snorkelling equipment, Bicycle hire, Laundry service, Parking (free), All rooms non smoking, 24 rooms.

**Room Features:** Air-conditioning, Fan, Tea/coffee making facilities, Cable TV, Beach towels, Safe.

**Max Capacity:** Traditional Hut – 2 adults/1 child, Garden View Bungalow/Ocean View Bungalow – 3, 2 Bedroom Apartment – 5.

HOTEL PARADIS D'OUVÉA



Garden Bungalow

Ouvéa, Loyalty Islands (UVE)  
MAP PAGE 58 REF. 9

From **\$522\***

- ❖ Situated on one of the world's most beautiful beaches
- ❖ Spacious bungalows with sunken bathtubs and modern facilities
- ❖ Lagoon and spa bungalows offer unobstructed lagoon views

**Includes full buffet breakfast daily.**

**Location:** Set on Mouli Beach with views of the lagoon of Ouvéa. Distances: Beachfront, Ouvéa Airport 15.3km.

**Getting There:** Coach transfers from Ouvéa Airport must be booked in conjunction with your accommodation. **\$61\*** per adult return. Child prices on application.

**Property Features:** Wi-Fi (common areas – extra charge), Pool, Restaurants (2), Guest lounge, Bar, Room service, Guest laundry, Use of snorkelling equipment, 34 rooms.

**Room Features:** Free Wi-Fi, Air-conditioning, Fan, Balcony, Mini bar, Tea/coffee making facilities, Ironing facilities, Bath, Hair dryer, Safe.

**Max Capacity:** Garden Bungalow – 4, Deluxe Lagoon Bungalow/Paradise Spa Bungalow – 2, Royal Garden Bungalow/Royal Lagoon Bungalow – 6.



\*Prices are a guide only, subject to change and availability and are in New Zealand Dollars. From prices for accommodation are per room per night for 2 people, unless otherwise specified and based on the lowest room category for travel in low season. Prices for tours and transfers are per person, unless otherwise specified. For full terms and conditions including pricing and conditions, refer to the Booking Conditions at the back of this brochure.

# ACCOMMODATION INDEX

## SAMOA

Aga Reef Resort .....	18
Amanaki Hotel .....	16
Amoa Resort Savai'i .....	23
Coconuts Beach Club Resort & Spa .....	19
Insel Fehmarn Hotel .....	16
Le Lagoto Resort .....	23
Le Vasa Resort .....	19
Litia Sini Beach Resort .....	18
Return to Paradise Resort & Spa .....	20
Saletoga Sands Resort & Spa .....	20
The Samoan Outrigger Hotel .....	16
Savai'i Lagoon Resort .....	23
Seabreeze Resort .....	21
Sheraton Samoa Aggie Grey's Hotel & Bungalows .....	18
Sheraton Samoa Beach Resort .....	22
Sinalei Reef Resort & Spa .....	21
Stevenson's at Manase .....	23
Tanoa Tusitala Hotel .....	16
Taumeasina Island Resort .....	17

## TAHITI

The Brando .....	33
Conrad Bora Bora Nui .....	30
Four Seasons Bora Bora .....	30
Hilton Moorea Lagoon Resort & Spa .....	28
InterContinental Bora Bora Le Moana Resort .....	29
InterContinental Bora Bora Resort & Thalasso Spa .....	31
InterContinental Moorea Resort & Spa .....	27
InterContinental Tahiti Resort & Spa .....	26
Kia Ora Resort & Spa .....	32
Le Maitai Polynesia Bora Bora .....	29
Le Méridien Bora Bora .....	32
Le Taha'a Island Resort & Spa .....	33
Manava Suite Resort Tahiti .....	26
Manava Beach Resort & Spa Moorea .....	28
Royal Huahine .....	32

Sofitel Bora Bora Marara Beach Resort .....	29
Sofitel Bora Bora Private Island .....	30
Sofitel Moorea la Ora Beach Resort .....	27
The St. Regis Bora Bora Resort .....	31
Tahiti la Ora Beach Resort managed by Sofitel .....	26
Tahiti Pearl Beach Resort and Spa .....	27
Tikehau Pearl Beach Resort .....	32

## VANUATU

Aore Island Resort .....	46
Barrier Beach Resort .....	47
Breakas Beach Resort .....	38
Chantilly's on the Bay .....	38
CoCo Beach Resort .....	39
Coconut Palms Resort .....	37
Coral Quays Fish & Dive Resort .....	46
Eratap Beach Resort .....	43
The Espiritu .....	46
Fatumarua Lodge .....	37
Friendly Beach Vanuatu .....	48
Grand Hotel and Casino .....	39
The Havannah Vanuatu .....	43
Hideaway Island Resort & Marine Sanctuary .....	37
Holiday Inn Resort Vanuatu .....	40
Iririki Island Resort & Spa .....	44
Mangoes Resort .....	41
Mariner Apartments .....	40
The Melanesian Port Vila .....	38
Moorings Vanuatu .....	37
Nasama Resort .....	41
Paradise Cove Resort .....	40
Poppys on the Lagoon Resort .....	42
Ramada Resort By Wyndham Port Vila .....	42
Ratua Island Resort & Spa .....	47
Sunset Bungalows Resort .....	39
The Terraces Boutique Apartments .....	45
Tropicana Lagoon Apartments Resort .....	39
Vale Vale Beachfront Villas .....	45

Village de Santo Resort .....	47
Warwick Le Lagon – Vanuatu .....	45
White Grass Ocean Resort & Spa .....	48

## TONGA

Fafa Island Resort .....	52
Liku'alofa Beach Resort .....	51
Matafonua Lodge .....	53
Mystic Sands Beach Bungalows .....	53
Royal Sunset Resort .....	51
Sandy Beach Resort .....	53
Tanoa International Dateline .....	52
The Tongan Beach Resort .....	53
The Waterfront Lodge .....	51

## NIUE

Lau's Getaway .....	56
Scenic Matavai Apartments .....	57
Scenic Matavai Resort .....	57
Scenic Matavai Villa .....	57
Stone Villas .....	56
Taloa Heights .....	56

## NEW CALEDONIA

Casa Del Sole Apartments .....	60
Château Royal Beach Resort and Spa .....	61
Drehu Village Hotel .....	65
Escapade Island Resort .....	61
Hilton Noumea La Promenade Residences .....	62
Hotel Le Lagon .....	60
Hotel Nengone Village .....	65
Hotel Paradis d'Ouvéa .....	65
Le Méridien Ile des Pins .....	64
Le Méridien Noumea Resort & Spa .....	63
Nouvata .....	60
Ouré Lodge Beach Resort .....	64
Ramada Hotel & Suites Noumea .....	62
Sheraton New Caledonia Deva Spa & Golf Resort .....	63



Moorea, Tahiti

## 1. Our Services and Obligations

1.1 The services within this brochure are supplied by the wholesaler GO Holidays, a division of helloworld Travel Ltd. They consist of arranging and co-ordinating travel, entertainment and accommodation facilities and services, and making bookings, issuing tickets and issuing vouchers to be redeemed by suppliers.

1.2 We undertake to perform these services with reasonable care and skill. We will not be liable for any loss or damage, or loss of enjoyment which result from the act, default or omission of any person other than ourselves or employees, or any cause beyond our control. This includes (but is not limited to) loss, damage or loss of enjoyment which arises directly or indirectly from an Act of God, weather disruptions, dangers incidental to sea, fire, breakdown in machinery or equipment, acts of Government or authorities whether legitimate or not, wars whether declared or not, hostilities, acts of terrorism, civil disturbances, strikes, lockouts, riots, deaths, pilferage, epidemics, quarantines or medical, customs or immigration or emigration regulations.

1.3 We are not able to exercise control over services we do not supply directly, therefore we will not be responsible for any loss or damage arising from:

- Any booking made directly with a service supplier by your travel agent or by yourself direct; or
- Any services which are not provided by us and which are additional to those described in this brochure.

1.4 We will endeavour to provide the most suitable travel arrangements to meet the particular requirements you make known to us. However, travel is an individual experience, and your preferences and opinions may vary from our own. For this reason, we cannot take responsibility for your individual satisfaction, neither can we take responsibility for weather nor for compatibility of fellow guests or staff during the course of your travel.

## 2. Supply of Travel, Entertainment, Accommodation Service and Facilities

2.1 When we make bookings with the providers of travel, accommodation, entertainment, activities, facilities or services ("the Suppliers") we are acting as a booking agent for the Suppliers.

2.2 All travel, entertainment, activities, and accommodation facilities or services are supplied directly to you by the Supplier. We have no control over the facilities or services themselves, or the manner in which they are provided by the Suppliers. Therefore you should be aware of the following conditions:

- GO Holidays Limited will not be liable for any loss or damage of any kind that may arise from your use or consumption of, or inability to use or consume those facilities or services.
- The provision of those facilities or services is subject to the terms and conditions of your contract with each Supplier.
- Where for any reason, a Supplier is unable to provide particular facilities or services, then that Supplier may be entitled, under its contract with you to substitute those services or facilities with comparable or equivalent facilities or services without incurring any liability to you. You should check your contract with each Supplier.
- All facilities or services described by us are subject to availability from the Supplier.
- GO Holidays Limited will not be liable or responsible for any loss or damage relating to your baggage, personal possessions, health or welfare, or delays or travel disruptions unless these arise directly from the service we provide to you.

## 3. Business Purposes

You agree that where our services are acquired for business purposes, or where you hold yourself out as acquiring our services for business purposes, the Consumer Guarantees Act 1993 will not apply to any supply of goods or services made under these conditions, and we will not be liable or responsible for any loss or damage of any kind to you, including any consequential loss or damage however it may be caused.

## 4. Information in the Brochure

4.1 This brochure was published on 5 December 2019 and is valid for services used 1 April 2020 to 31 March 2021 unless otherwise advised. Exchange rates used when costing this brochure are as at 22 November 2019.

4.2 While we have exercised reasonable care and skill to ensure that the contents of this brochure are correct, accurate, and up-to-date at the time of publishing, please note that the contents of this brochure are based on information supplied to us by the Suppliers. We do not have, and cannot be reasonably expected to have, personal knowledge about all the facilities or services provided by each Supplier.

4.3 Facilities or services may change after the date of publication. We endeavour to keep travel agents informed of any changes to information in this brochure that are brought to our attention. Prior to booking your ticket, you should ask your travel agent about any changes to the published information of which your agent may be aware. You should also make sure that if your travel agent is advised of changes that occur after booking, your travel agent is able to contact you.

4.4 All maps, illustrations and photographs are for indicative purposes only and may not necessarily reflect actual places or positioning.

4.5 Accommodation must be consecutive at the same hotel to qualify for free nights. Important: Hotels have the right to change conditions e.g. 5th night free. Bonus offers: e.g. free upgrade or late checkouts are subject to availability at time of stay.

## 5. Prices

5.1 All prices shown in this brochure are expressed in New Zealand dollars.

5.2 Events beyond our control, such as currency fluctuations, changes to the price of aviation fuel or changes to the cost of services and facilities may result in the prices charged to you being different.

5.3 It must be understood that if for any of the reasons mentioned in Clause 5.2 price increases or variation of terms are notified to us between the time of booking and departure, we reserve the right to vary the price to you up to the time of your departure.

5.4 All prices exclude travel agent service fees.

## 6. Payment

6.1 A deposit of \$100 must be paid to your travel agent within seven (7) days of verbal or written confirmation of booking request. Certain Suppliers may also require an additional booking fee or deposit to be paid.

6.2 A booking requested less than seven (7) days prior to departure may incur communication charges.

6.3 Final payment shall in all cases be made not less than 30 days prior to departure. In some cases the terms of the tour or travel may require full payment at an earlier date. In that case you will be advised at the time your booking is processed.

6.4 Credit Card not permitted unless travel agent acts as merchant.

## 7. Amendment or Cancellation

7.1 If you wish, or circumstances require you to amend or cancel your booking for any reason, you should advise us in writing through your travel agent at the earliest possible time.

7.2 Where you cancel any booking more than thirty (30) days prior to your departure you are likely to have to pay a fee. A cancellation fee of \$200 will be imposed where cancellation is made within thirty (30) days prior to your departure, plus any suppliers charges as per note 7.3. Please refer however to Clause 7.6 for special conditions in some cases.

7.3 The above cancellation fees are required to offset booking, communication and administration charges that will have already been incurred by us. In addition to our cancellation fee, you may also be required to pay cancellation fees imposed by our Suppliers (i.e. airlines, hotels, etc.) The amount of each Supplier's cancellation fee is beyond our control, and payment is solely your responsibility. You should check with your travel agent concerning the amount of a Supplier's cancellation fees.

7.4 To the extent that we are able to do so (bearing in mind we are dependent upon third party availability beyond our control) we will be pleased to incorporate any reasonable changes you request. An itinerary change may attract a fee similar to cancellation fees in Clause 7.2 above to cover our administration costs.

7.5 Some Suppliers may reserve the right to cancel or amend travel, accommodation, etc and GO Holidays must therefore reserve similar rights to cancel or amend any holiday arrangements.

7.6 There are cases where the terms of supply as to refundability of pre-payments require provisions different from the above. In those cases the conditions specific to your tour will be advised to you at the time your booking is processed.

## 8. Insurance

We strongly recommend that as a minimum you insure yourself fully against cancellation, disruption, loss of luggage and personal property, and medical expenses. Your travel agent will be able to provide you with further information.

## 9. Items Not Covered

Unless otherwise specified, the cost of meals, drinks, laundry, telephone calls, insurance, sightseeing tours, local taxes, airport departure taxes, aviation insurance levies and passport or visa application fees are not included.

## 10. Package Costs

Included in the tour costs are charges for normal booking procedure costs, communication costs, administration, research, printing, etc. Where the land arrangements of holidays are included in a composite package, an itemisation of costs will not be rendered.

## 11. Visas / Passports

For all holidays in this brochure you will require a valid passport. You are responsible for arranging your own passport, visa and health requirements (including inoculation where applicable). You should check with your travel agent who will be able to provide you with the necessary information.

## 12. Non-Use of Services or Facilities

If, of your own choice, you decide not to use part or parts of the arranged services or facilities, you will not be entitled to a refund from us (provided we have carried out our service with reasonable skill and care and to your requirements) and you may not be entitled to a refund from any Supplier.

## 13. GO Holidays Charter for Addressing Problems

In the event that you should strike a problem or you are dissatisfied with some aspect of the services or facilities during the course of your trip, our recommendation is that you take the matter up directly with the supplier of the service at the time, or as soon as practicable in the circumstances. This provides the opportunity to have the matter discussed and investigated on the spot and a remedy negotiated then and there to enable you to continue enjoying your holiday. We have found from experience that it is very difficult (in some countries impossible) for us to obtain redress for you once travel has been completed. If this does not work, we wish to be involved at the earliest possible moment and our commitment is that we will immediately work on resolving the issue to your satisfaction.

## 14. Health or Disability

Some Suppliers may reserve the right to refuse to carry or accommodate people who, because of a health condition or disability, may require services or facilities to be provided in a special manner or at a certain stage of pregnancy. You should check this with your travel agent.

## 15. Legal Claims

The laws of New Zealand will govern any claims or legal action in connection with the provision of our services to you. Any claim or legal action against the Suppliers is likely to be subject to the terms of your contract with them, and may be governed by the laws of other countries.

## 16. Images

Our thanks to Tourist Bureaus, hotel, tour operators, Samoa Tourism, Tahiti Tourisme, Vanuatu Tourism, Tonga Tourism Authority, New Caledonia Tourism, Jonathan Irish, James Blackwood, Stéphane Querbes, Sue Flood, David Kirkland, Sean Condon, Charlotte Pihou, Stéphane Ducandas, Adam Crouchley, Charles Veronese, Michael McLennan, Mauro Risch, Massimo Colombin, Grégory Lecoeur, Arnaud Elissalde, Stéphane Querbes, Emmanuel Righetti, Jake Roden, Patrice Belcher, Drew Petterson, Lawrence Smith, Jason Weeks, Ducandas, Hemis Alamy, Aaron Malcolmson, Matthew Krumins, Gerben Van Der Waals, Sue Flood, Vrx Studios, Shae Style Photography, Jordan Kwan, Chris McLennan, Adam Bruzzone, Cheshier, Ben Roache, Emmanuel Righetti.

## PLEASE READ THESE CONDITIONS CAREFULLY

The guarantees under the Consumer Guarantees Act will apply to services supplied by us except where they are acquired, or are held out as being acquired for business purposes.

THE MOMENT  
YOU REALISE SHE DIDN'T  
SAY CANOODLING

ANSWER  
THE CALL OF  
*Vanuatu*



Answer the call of Vanuatu and unleash your sense of adventure. Spend some time off grid; diving into reefs teeming with sealife, kayaking up crystal clear rivers to our famous blue holes and feasting on the freshest of seafood on pristine beaches. And that's just on day one.

1.30pm Bor Bor River, Espiritu Santo

||

YOUR GO HOLIDAYS PREFERRED AGENT:



Travel Agent Bookings and Enquiries

Phone: 09 914 4002

Email: [res@goholidays.co.nz](mailto:res@goholidays.co.nz)